

NOVA I™

N524 SERIES (6100)

PROJECT INFORMATION

Job Name _____

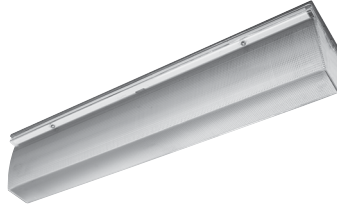
Fixture Type _____

Catalog Number _____

Approved by _____

PRODUCT FEATURES:

- » Surface mount – ceiling or wall; nominal 5"×24"
- » 16-gauge cold rolled steel baseplate with wraparound UV-stabilized high impact polycarbonate lens
- » Peace of Mind Guarantee® against breakage



SPECIFICATIONS

BASEPLATE: 16-gauge CRS. Baseplate provided with four-point mounting holes and one wireway hole – see Cross Section/Details. White TGIC polyester powder coat – 5-stage pre-treatment. Salt spray test: 1,000 hours; Reflectance: 92%.

LENS: One-piece wraparound lens with two alignment security tabs for baseplate engagement. UV-stabilized, high impact, virgin injection molded clear prismatic polycarbonate. Nominal thickness .125".

ELECTRICAL: Class P ballasts. Fluorescent electronic 120/277/347 and dual voltage ballasts high power factor. 0°F min. starting temperature standard.

SOCKETS: Shock-resistant sockets with internal locking collar to ensure positive lamp retention.

GASKET: Die-cut closed cell neoprene gasket seals lens/housing to mounting surface.

HARDWARE: Four stainless steel Torx® with center pin fasteners secure lens/housing to baseplate.

INSTALLATION: Four-point mounting required for Peace of Mind Guarantee®. "Twist-out" sections, with gaskets, permit 1/2" conduit access on each end without special adapter.

WARRANTY: Limited one (1) year Kenall fluorescent warranty

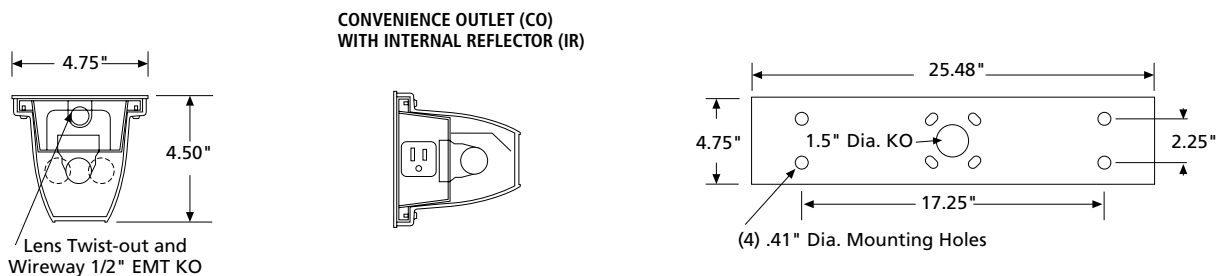
LISTINGS: UL and CUL listed for Wet Locations – covered ceilings only. UL and CUL listed for Damp Locations – wall mount.



ORDERING INFORMATION (Ex: N524-C-1-17-IS-1-DV)

Model	Lens Type	Lamp Qty	Lamp Type	Ballast Type	Ballast Qty	Voltage	Options	Accessories
N524	C				1			
Lens Type		Lamp Type		Options				
C Clear Prismatic		14 F14T5 17 F17T8		EL Standard Lumen Battery Pack (32°F, one-lamp operation) CO Convenience Outlet – Non GFI Receptacle (Wall Mount) 120 Volts only FS Fuse & Holder IR Internal Reflector (Wall Mount) PS Push Switch (Wall Mount) – n/a with 347V TN 5 Watt Twin Tube NPF Night Light (n/a with 347V or DV)				
Lamp Quantity		Ballast Type		Accessories				
1 One Lamp 2 Two Lamps		IS Instant Start Electronic <10% THD (T8) RS Rapid Start Electronic <10% THD (Biax, T8, T5) SB Specified Ballast		CM Corner Mount Adapter (683) Damp Locations only SA Surface Adapter (6100A) 9500 Torx® Screwdriver				
		Ballast Quantity		Voltage				
		1 One		120 120 Volts 277 277 Volts 347 347 Volts DV 120-277 Volts				

DIMENSIONAL DATA



www.kenall.com

P: 800-4-Kenall

F: 262-891-9701

10200 55th Street Kenosha, Wisconsin 53144

When you see this image, you will know the Kenall product shown or described is designed and manufactured in the USA with components purchased from US suppliers, and meets the Buy American requirements under the ARRA. Kenall has not determined the origin of its domestically purchased components or the subcomponents thereof. May be covered by patents found at www.kenall.com/patents. Content of specification sheets is subject to change; please consult www.kenall.com for current product details. © 2018 Kenall Mfg. Co. All rights reserved.