

MILLENIUM STRETCH™

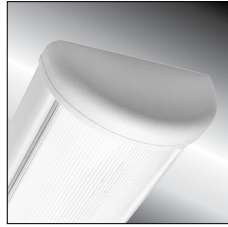
MLRS8 SERIES – GEOMETRIC/CONTINUOUS RUN

PROJECT INFORMATION

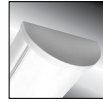
Job Name _____
 Fixture Type _____
 Catalog Number _____
 Approved by _____

PRODUCT FEATURES:

- » Surface mount – wall or ceiling; 8" x 48"
- » Continuous row mount luminaires
- » ADA compliant



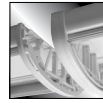
Rounded End Cap



Flat End Cap



Reveal End Cap



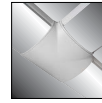
Continuous Row
Joiner Band



Node "L"
2-Way



Node "N"
Inline



Node "T"
3-Way



Node "X"
4-Way

SPECIFICATIONS

HOUSING: Marine grade aluminum. Extruded body with die-cast end caps. Housing, with end caps, post assembly TGIC polyester powder coat finished – 5-step pre-treatment. Each pattern run of luminaires consists of one or more "L", "N", "T", or "X" node. See ordering information to specify quantities. NOTE: Contact factory for pattern layout details.

REFLECTOR: Full reflector/wire cover – 97% reflectivity.

LENS: UV-stabilized, high impact extruded clear or pearlescent acrylic. Smooth exterior, linear prismatic interior. Nominal thickness .156". Lens securely positioned in body channels and end caps. Lens locked in place with tamper-resistant stainless steel Torx® with center pin fasteners and sealed with closed cell gaskets.

END CAPS: Marine grade die-cast aluminum. Three styles available: Flat, Rounded and Reveal. Conduit and "Wiremold™" ready" knockouts visible only from interior of end cap (Flat and Rounded styles only).

NODES: Marine grade cast aluminum cover mounted to 18-gauge mounting plate. Cover includes knockouts for Wiremold™ entry (not available in "X" 4-way node).

SOCKETS: Shock-resistant sockets with internal locking collar to ensure positive lamp retention.

HARDWARE: Four stainless steel, tamper-resistant Torx® fasteners secure lens in housing body's lens channel. Electrical Quick Connector supplied (Specify Circuit Qty, see below).

ELECTRICAL: LED: Available 3500K, 4000K and 5000K color temperatures, 82 CRI. 120-277VAC, 50/60Hz electrical input with serviceable high power factor electronic, constant-current driver (<20% THD, >0.95 PF). Standard 0-10V dimming with 3-100% range, maximum driver source of 250 µA. LF: Class P ballasts. Fluorescent electronic 120/277/347 and dual voltage ballasts high power factor.

INSTALLATION: Standard six-point mounting per fixture recommended.

WARRANTY: limited ten (10) year warranty for LED Lamps.

LISTINGS: UL and CUL listed for Damp Location only. ADA compliant. Suitable for use as a raceway; consult factory. Suitable for use in continuous row.



ORDERING INFORMATION (Ex: MLRS8GMS-4/48-0/L-0/T-4/X-0/N-R-MB-CIA-1-54-RS-1-120)

Model	Fixture Qty	Node L	Node T	Node X	Node N	End Cap*	Finish	Ballast/Driver	Lens	Lamp Qty	Lamp Type	Circuit Qty	Voltage	Options	
MLRS8GMS	/48	/L	/T	/X	/N										
Fixture Quantity (replace "x" with qty) (x)/48 Nominal 48" housing		Node L (replace x with qty) (x)/L Node "L" 2-Way Intersecting		Node T (replace x with qty) (x)/T Node "T" 3-Way Intersecting		Node X (replace x with qty) (x)/X Node "X" 4-Way Intersecting		Node N (replace x with qty) (x)/N Node "N" Inline		End Caps (if required) R Rounded F Flat RV Reveal					
Finish MW Matte White MB Matte Black LG Light Gray CC Custom Color (Consult Factory)		Lens CIA† Clear High Impact Acrylic PIA Pearlescent High Impact Acrylic		Lamp Quantity (Cross Section) 1 One 2† Two		Lamp Type 45L35K 45 Watt 3500K LED 45L40K 45 Watt 4000K LED 45L50K 45 Watt 5000K LED 67L35K 67 Watt 3500K LED 67L40K 67 Watt 4000K LED 67L50K 67 Watt 5000K LED 90L35K 90 Watt 3500K LED 90L40K 90 Watt 4000K LED 90L50K 90 Watt 5000K LED 28 F28T5 32 F32T8 54 F54T5HO 54A F54T5HO amalgam		Ballast/Driver Type DCC Dimming Constant Current (LED) IS Instant Start Electronic <10% THD (T8) RS Rapid Start Electronic <10% THD (T8, T5, T5HO) SB Specified Ballast		Circuit Quantity 1 One 2† Two		Voltage 120 120 Volts 277 277 Volts 347▲ 347 Volts (Consult Factory) DV 120-277 Volts		Options EL*** 500 Minimum Lumen Battery Pack – Specify Qty (90 Minutes; 32°F Starting Temperature) PEL*** 1100 Minimum Lumen Battery Pack –Specify Qty (90 Minutes; 32°F Starting Temperature) FS Single Fuse & Holder PH Phillips Head Fasteners PM Pendant Mount (stems by others) UC† Uplight Component (Pendant Mount only; stems by others) XC Auxiliary Circuit	
** One lamp maximum in emergency mode.															
▲ n/a with EL or PEL options.															
▼ n/a with T5HO if EL/PEL option ordered with PM or UC option															
† n/a with LED Lamp Type															



www.kenall.com

P: 800-4-Kenall

F: 262-891-9701

10200 55th Street Kenosha, Wisconsin 53144

When you see this image, you will know the Kenall product shown or described is designed and manufactured in the USA with components purchased from US suppliers, and meets the Buy American requirements under the ARRA. Kenall has not determined the origin of its domestically purchased components or the subcomponents thereof. May be covered by patents found at www.kenall.com/patents. Content of specification sheets is subject to change; please consult www.kenall.com for current product details. © 2018 Kenall Mfg. Co. All rights reserved.

MLRS8GMS-100918

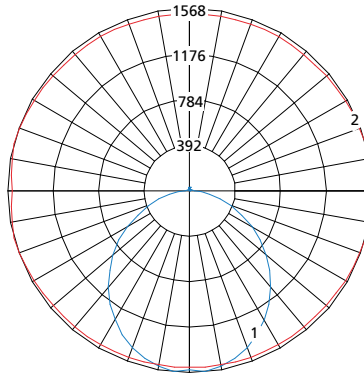
MILLENIUM STRETCH™

MLRS8 SERIES – GEOMETRIC/CONTINUOUS RUN

PERFORMANCE	Initial Delivered Lumens					
	Lamp Type	@ 25°C	Efficacy (lm/W)	Input Power (W)	Drive Current (mA)	Estd. L70 LED Life (Hrs)
	45L35K	4632	95	50	94	150,000
	45L40K	4938	101	50	94	150,000
	45L50K	5136	103	50	94	150,000
	67L35K	6640	89	74	66	150,000
	67L40K	7078	95	74	66	150,000
	67L50K	7362	99	74	66	150,000
	90L35K	8445	84	100	94	150,000
	90L40K	9003	90	100	94	150,000
	90L50K	9363	93	100	94	150,000

Displayed information is for selected luminaires only. Additional wattages and color temperatures are also available. Visit www.kenall.com for additional information.

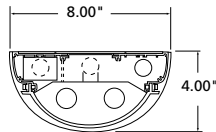
Model: MLRS8-48-F-MW-PP-1-45L40K-DCC-1-DV



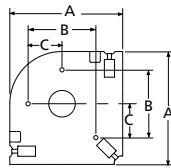
Maximum Candela = 1370 Located At Horizontal Angle = 15, Vertical Angle = 5

- 1 - Vertical Plane Through Horizontal Angles (15-195) (Through Max. Cd.)
- 2 - Horizontal Cone Through Vertical Angle (5) (Through Max. Cd.)

DIMENSIONAL DATA

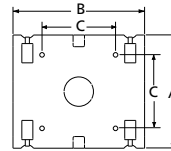


Please provide reflected ceiling plans to factory for dimensional data and factory supplied fixture layout with mounting information. Dimensions A and B are outside dimensions. Dimension C is mounting holes.



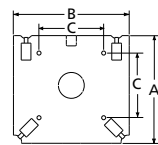
"L" NODE

SERIES	Dimensions			Part #
	A	B	C	
MLRS8S	8.33"	5.00"	2.50"	ML8L



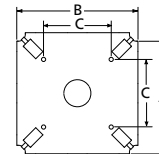
"N" NODE

SERIES	Dimensions			Part #
	A	B	C	
MLRS8S	7.70"	8.95"	5.00"	ML8N



"T" NODE

SERIES	Dimensions			Part #
	A	B	C	
MLRS8S	8.33"	8.95"	5.00"	ML8T



"X" NODE

SERIES	Dimensions			Part #
	A	B	C	
MLRS8S	8.95"	8.95"	5.00"	ML8X



www.kenall.com

P: 800-4-Kenall

F: 262-891-9701

10200 55th Street Kenosha, Wisconsin 53144

When you see this image, you will know the Kenall product shown or described is designed and manufactured in the USA with components purchased from US suppliers, and meets the Buy American requirements under the ARRA. Kenall has not determined the origin of its domestically purchased components or the subcomponents thereof. May be covered by patents found at www.kenall.com/patents. Content of specification sheets is subject to change; please consult www.kenall.com for current product details. © 2018 Kenall Mfg. Co. All rights reserved.

MLRS8GMS-100918