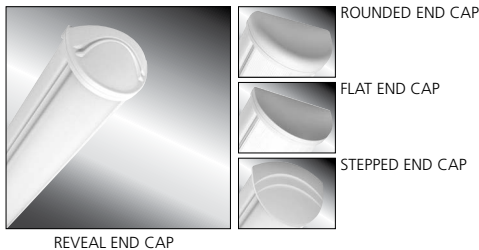


# MILLENNIUM STRETCH™

## MLHA5 SERIES – INDIVIDUAL

### Product Features:

- » Surface mount – ceiling, wall; 5"×24", 36", 48", 72" and 96"
- » Extruded aluminum housing with decorative end caps
- » Low-profile –ADA compliant
- » Peace of Mind Guarantee® against breakage



### PROJECT INFORMATION

Job Name \_\_\_\_\_  
 Fixture Type \_\_\_\_\_  
 Catalog Number \_\_\_\_\_  
 Approved by \_\_\_\_\_

### SPECIFICATIONS:

**HOUSING:** Marine grade aluminum. Extruded body with die-cast end caps. Housing, with end caps, post assembly TGIC polyester powder coat finished – 5-step pre-treatment. See Ordering Information for standard, optional and custom finishes.

**REFLECTOR:** Full reflector/wire cover – 92% reflectivity.

**LENS:** UV-stabilized, high impact extruded clear or pearlescent polycarbonate. Smooth exterior, linear prismatic interior. Nominal thickness .156". Lens securely positioned in body channels and caps. Lens locked in place with tamper-resistant stainless steel Torx® with center pin fasteners and sealed with closed cell gaskets.

**END CAPS:** Marine grade die-cast aluminum. Four styles available: Flat, Rounded, Reveal and Stepped. Conduit and "Wiremold™ ready" knockout visible only from interior of end cap (For Flat and Rounded styles only).

**SOCKETS:** Shock-resistant sockets with internal locking collar to ensure positive lamp retention.

**HARDWARE:** Stainless steel, tamper-resistant Torx® with center pin fasteners secure lens in housing body's lens channel (eight on 72" and 96" housings, four on 24", 36" and 48" housings).

**ELECTRICAL:** **LED:** Available 3500K, 4000K and 5000K color temperatures, 82 CRI. 120-277VAC, 50/60Hz electrical input with serviceable high power factor electronic, constant-current driver (<20% THD, >0.95 PF). Standard 0-10V dimming with 1-100% range, maximum driver source of 250 µA. Optional embedded microwave motion sensor (MS) has factory default settings of 20 minute time out, dims down to 30%. **LF:** Class P ballasts. Fluorescent electronic 120/277/347 and dual voltage ballasts high power factor.

**TEKLINK™ TL50:** An independent lighting control system embedded in the luminaire, featuring its own occupancy sensor, daylight harvesting and adjustable time-out/dimming settings.

**TEKLINK™ TL100:** Centralized, wired zonal occupancy and closed-loop daylight harvesting control system. TL100 controllers are standalone devices and ordered separately for luminaire. [Click here for specifications.](#)

**INSTALLATION:** Standard two-point (24" housing), four-point (36" and 48" housing) and eight-point (72" and 96" housing) mounting required for Peace of Mind Guarantee®. LED product ambient temperature is -30°C to 40°C, unless otherwise noted.

**PHOTOMETRICS:** Photometry tested to the IESNA LM-79-08 standard by an ILAC/ISO17025 accredited laboratory. For additional photometric data, please go to [www.kenall.com](http://www.kenall.com).

**WARRANTY:** Limited ten (10) year warranty for LED Lamps.

**LISTINGS:** Luminaire is certified to UL Standards by Intertek Testing Laboratory for wet location – covered ceiling mount. Corner, horizontal wall, vertical wall and pendant mount installation – damp location only. ETL certified IP64 in compliance with IEC 60598 – ceiling mount. ADA compliant.



In Stock SKU
MLHA5-48-F-MW-PP-45L40K-DCC-1-DV
MLHA5-48-R-MW-PP-45L40K-DCC-1-DV

### ORDERING INFORMATION (Ex: MLHA5-48-F-MB-PP-45L40K-DCC-DV-FS)

Model	Length	End Cap	Finish	Lens	Lamp Qty	Lamp Type	Ballast/Driver	Circuit Qty	Voltage	Options	Accessories	TekLink	Controls Kit
<b>MLHA5</b>													< >

<b>Length</b>	<b>Lamp Type</b>	<b>Circuit Quantity</b> ‡	<b>Accessories</b>
24 2'	<b>2' Lengths</b>	1 One	<b>CMB</b> § Corner Mount Bracket
36 3'	<b>25L35K</b> 25 Watt 3500K LED	2† Two	(Must be ordered with DL Option)
48 4'	<b>25L40K</b> 25 Watt 4000K LED		<b>9500</b> Torx® Screwdriver
72 Two 3' (factory connected)	<b>25L50K</b> 25 Watt 5000K LED		<b>D-0552</b> Torx® Driver Bit
96 Two 4' (factory connected)	<b>14</b> F14T5		(Required for CMB Option)
<b>End Caps</b>	<b>17</b> F17T8	<b>Voltage</b>	<b>TekLink</b>
<b>F</b> Flat	<b>24</b> F24T5HO (120/277V only)	<b>120</b> 120 Volts	<b>TL50</b> ▲ TL50 Control System
<b>R</b> Rounded	<b>3' Lengths</b>	<b>277</b> 277 Volts	( <a href="#">Click here for specifications</a> )
<b>RV</b> Reveal	<b>21</b> F21T5	<b>347*</b> 347 Volts (Consult Factory)	<b>TL100</b> TL100 Control System
<b>SP</b> Stepped	<b>25</b> F25T8	<b>DV</b> 120-277 Volts	( <a href="#">Click here for specifications</a> )
<b>Finish</b>	<b>39</b> F39T5HO (120/277V only)	<b>Options</b>	Please consult Kenall Applications when ordering controls. Mounting heights above 14' may require alternate sensing technology.
<b>LG</b> Light Gray	<b>4' Lengths</b>	<b>EL</b> ‡ 500 Minimum Lumen Battery Pack (4' only)	
<b>MB</b> Matte Black	<b>45L35K</b> 45 Watt 3500K LED	(90 Minutes; 32°F Starting Temperature)	
<b>MW</b> Matte White	<b>45L40K</b> 45 Watt 4000K LED	<b>PEL</b> ‡ 1100 Minimum Lumen Battery Pack	
<b>CC</b> Custom Color (Consult Factory)	<b>45L50K</b> 45 Watt 5000K LED	90 Minutes; 32°F Starting Temperature	
<b>Lens</b>	<b>28</b> F28T5	<b>LED</b> LED Emergency Battery Backup (4' only; 32°F starting temp)	
<b>CP</b> ‡ Clear Polycarbonate	<b>32</b> F32T8	<b>CDF</b> Captive Diffuser Fasteners	
<b>PP</b> Pearlescent Polycarbonate	<b>54</b> F54T5HO	<b>DL</b> Damp Location	
<b>Lamp Quantity (Cross Section)</b> ‡	<b>54A</b> F54T5HO amalgam	<b>FS</b> Single Fuse & Holder	<b>Controls Kit</b>
<b>1</b> One	<b>Ballast/Driver Type</b>	<b>NAT</b> Natatorium Environment Option	< > Factory Assigned Internal Code
<b>2</b> Two	<b>DCC</b> Dimming Constant Current (LED Only)	<b>PH</b> Phillips Head Fasteners	† n/a on 2' fixtures with EL option.
	<b>IS</b> Instant Start Electronic <10% THD (T8)	<b>PM</b> § Pendant Mount (stems by others; damp only)	▼ 347V n/a with EL or PEL options.
	<b>RS</b> Rapid Start Electronic <10% THD (T8, T5, T5HO)	<b>MS</b> Motion Sensor (2' and 4' LED only) (n/a with 347 Voltage Option)	■ 2' Fixtures have minimum 350-450 lumen battery pack. n/a with (2) T5HO lamps.
	<b>SB</b> Specified Ballast		● n/a on 2' fixtures, 3' fixtures with T5 or T8 lamping, or with (2) T5HO lamps.
			‡ n/a with LED
			§ PM and CMB not available in conjunction
			▲ LED only. N/A with with PM or CMB options. N/A with 72" or 96" length.



[www.kenall.com](http://www.kenall.com)

P: 800-4-Kenall

F: 262-891-9701

10200 55th Street Kenosha, Wisconsin 53144

When you see this image, you will know the Kenall product shown or described is designed and manufactured in the USA with components purchased from US suppliers, and meets the Buy American requirements under the ARRA. Kenall has not determined the origin of its domestically purchased components or the subcomponents thereof. May be covered by patents found at [www.kenall.com/patents](http://www.kenall.com/patents). Content of specification sheets is subject to change; please consult [www.kenall.com](http://www.kenall.com) for current product details. © 2018 Kenall Mfg. Co. All rights reserved.

# MILLENIUM STRETCH™

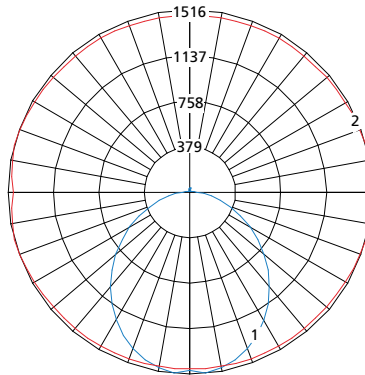
## MLHA5 SERIES – INDIVIDUAL

### PERFORMANCE

Length	Lamp Type	Initial Delivered Lumens			Drive Current (mA)	Estd. L70 LED Life (Hrs)
		@ 25°C	Efficacy (lm/W)	Input Power (W)		
2'	25L35K	2,374	95	25	100	150,000
	25L40K	2,531	101	25	100	150,000
	25L50K	2,531	101	25	100	150,000
4'	45L35K	4,748	97	49	100	150,000
	45L40K	5,062	103	49	100	150,000
	45L50K	5,062	103	49	100	150,000

Information above is valid for the recommended Type PP lens type and is subject to change without notice. Visit [www.kenall.com](http://www.kenall.com) for IES files and additional information.

Model: MLHA5-48-F-MW-PP-45L40K-DCC-DV

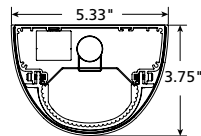


Maximum Candela = 1516 Located At Horizontal Angle = 15, Vertical Angle = 5

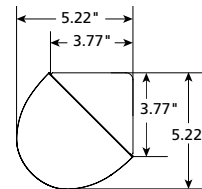
- 1 - Vertical Plane Through Horizontal Angles (15-195) (Through Max. Cd.)
- 2 - Horizontal Cone Through Vertical Angle (5) (Through Max. Cd.)

### DIMENSIONAL DATA

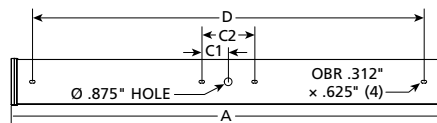
### CROSS SECTION/DETAILS



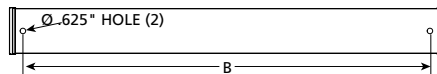
### CORNER MOUNT BRACKET



### SURFACE MOUNTING HOLES



### PM OPTION



### Nominal Two Foot Fixture Legend

LMP End Cap	A	B	C1	C2	D
T8/LED R	26.524	22.250	N/A	N/A	20.480
T8/LED F	25.308	22.250	N/A	N/A	20.480
T8/LED SP	28.131	22.250	N/A	N/A	20.480
T8/LED RV	27.674	22.250	N/A	N/A	20.480
T5 R	24.940	20.666	N/A	N/A	18.896
T5 F	23.724	20.666	N/A	N/A	18.896
T5 SP	26.547	20.666	N/A	N/A	18.896
T5 RV	26.090	20.666	N/A	N/A	18.896

### Nominal Three Foot Fixture Legend

LMP End Cap	A	B	C1	C2	D
T8/LED R	38.524	34.250	3.000	6.000	32.480
T8/LED F	37.308	34.250	3.000	6.000	32.480
T8/LED SP	40.131	34.250	3.000	6.000	32.480
T8/LED RV	39.674	34.250	3.000	6.000	32.480
T5 R	36.751	32.478	2.953	5.906	30.708
T5 F	35.535	32.478	2.953	5.906	30.708
T5 SP	38.358	32.478	2.953	5.906	30.708
T5 RV	37.901	32.478	2.953	5.906	30.708

### Nominal Four Foot Fixture Legend

LMP End Cap	A	B	C1	C2	D
T8/LED R	50.524	46.250	3.000	6.000	44.480
T8/LED F	49.308	46.250	3.000	6.000	44.480
T8/LED SP	52.131	46.250	3.000	6.000	44.480
T8/LED RV	51.674	46.250	3.000	6.000	44.480
T5 R	48.562	44.288	2.953	5.906	42.518
T5 F	47.346	44.288	2.953	5.906	42.518
T5 SP	50.169	44.288	2.953	5.906	42.518
T5 RV	49.712	44.288	2.953	5.906	42.518



[www.kenall.com](http://www.kenall.com)

P: 800-4-Kenall

F: 262-891-9701

10200 55th Street Kenosha, Wisconsin 53144

When you see this image, you will know the Kenall product shown or described is designed and manufactured in the USA with components purchased from US suppliers, and meets the Buy American requirements under the ARRA. Kenall has not determined the origin of its domestically purchased components or the subcomponents thereof. May be covered by patents found at [www.kenall.com/patents](http://www.kenall.com/patents). Content of specification sheets is subject to change; please consult [www.kenall.com](http://www.kenall.com) for current product details. © 2018 Kenall Mfg. Co. All rights reserved.