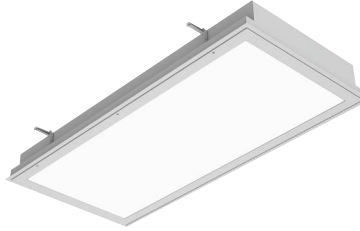


SIMPLESEAL™ ENVIRONMENTAL ESEFI SERIES – LF FLANGE MOUNT – INSET DOOR

PRODUCT FEATURES:

- » Recessed flange; ceiling mount – 1'x4', 2'x2', 2'x4'
- » One-piece inset doorframe, secured to housing with continuous hinge and fasteners
- » 20-gauge hole-free, one-piece cold rolled steel housing
- » Closed cell extruded silicone gasket seals doorframe to housing
- » UL certified IP65 per IEC 60598



PROJECT INFORMATION

Job Name _____
 Fixture Type _____
 Catalog Number _____
 Approved by _____

SPECIFICATIONS:

HOUSING: 20-gauge CRS. Hole-free seam welded construction. White TGIC polyester powder coat finish – 5-step pre-treatment. Salt spray test: 1,000 hours; Reflectance: 92%.

HOUSING FLANGE: 18-gauge CRS. Mitered and welded corners then spot-welded to housing.

DOORFRAME: 18-gauge CRS. One-piece inset construction welded corners. White TGIC polyester powder coat finish – 5-step pre-treatment. Salt spray test: 1,000 hours; Reflectance: 92%. Doorframe secured to housing with continuous hinge and (2) for 2x2, (3) for 1x4, 2x4 captive mounted Phillips head stainless steel fasteners. Closed cell extruded silicone gasket seals doorframe to housing.

LENS: .125" P12 acrylic lens sealed to doorframe with silicone sealant and secured with continuous lens retention system. Lens orientation – smooth side out.

ELECTRICAL: Fluorescent electronic ballasts (<10% THD). Lamps by others. See Electrical Options for additional options.

INSTALLATION: Adjustable swing-out mounting brackets standard.

WARRANTY: Limited one (1) year Kenall fluorescent warranty.

LISTINGS: UL and CUL Listed for Wet Location. UL certified IP65 per IEC 60598. CCEA approved.



ORDERING INFORMATION (Ex: ESEI4-1-32-RS-1-120-2F-2H-1)

Model	Lamp Qty/Type	Ballast Type	Ballast Qty	Voltage	Doorframe Option	Housing	Lens Type	Options
Model								
ESEFI14T5	1'x4'							
ESEFI22T5	2'x2'							
ESEFI24T5	2'x4'							
ESEFI14T8	1'x4'							
ESEFI22T8	2'x2'							
ESEFI24T8	2'x4'							
Lamp Quantity/Type								
1x4 – T5								
1-28	One F28T5							
2-28	Two F28T5							
3-28	Three F28T5							
1-54	One F54T5HO							
2-54	Two F54T5HO							
3-54	Three F54T5HO							
1x4 – T8								
1-32	One F32T8							
2-32	Two F32T8							
3-32	Three F32T8							
2x2 – T5								
2-24	Two F24T5HO							
3-24	Three F24T5HO							
4-24	Four F24T5HO							
2x2 – T8								
2-17	Two F17T8							
3-17	Three F17T8							
4-17	Four F17T8							
6-17	Six F17T8							
2-31U	Two F17T8							
3-31U	Three F17T8							
2x4 – T5								
2-28	Two F28T5							
3-28	Three F28T5							
4-28	Four F28T5							
6-28	Six F28T5							
2-54	Two F54T5HO							
3-54	Three F54T5HO							
4-54	Four F54T5HO							
6-54	Six F54T5HO							
Ballast Type								
IS	Instant Start Electronic <10% THD							
RS	Rapid Start Electronic <10% THD							
SB	Specified Ballast							
Ballast Quantity								
1	One							
2	Two							
Voltage								
120	120 Volts							
277	277 Volts							
347	347 Volts							
Doorframe Options								
2F	18-Ga CRS Painted (STD)							
AF	Anodized Aluminum							
PAF	Painted Fabricated Aluminum							
5F	20-Ga Type 304 SS Brushed							
Housing/Flange Options								
2H	20-Ga CRS/18-Ga CRS (STD)							
5H5	20-Ga Type 304 SS/18-Ga Type 304 SS							
2H5	20-Ga CRS/18-Ga Type 304 SS							
PAH	.050" Painted Aluminum							
Lens Type								
Acrylic								
1	.125" #12 Prismatic (STD)							
T	.125" Clear							
U	.125" #12 Prismatic Impact Blend							
Polycarbonate								
2	.125" #12 Prismatic							
G	.125" Clear							
6	.187" #12 Prismatic							
Tempered Glass								
TG	.156" Textured Tempered Glass							
Specified Lens								
SL	Specified Lens							
Options								
EL*	Standard Lumen EL Pack							
PEL*	High Lumen EL Pack							
SEL*	Specified EL Pack							
DLN	LED Night Light w/Light Level Control (100%-20%)							
FS*	Fuse & Holder							
HJ	Sealed Wireway							
IF	Install Frame							
PF	Plaster Frame							
RM	Continuous Row Mounting							
TH	1/2" Trade Size Threaded Hub							
TN	PL Night Light – 5/7/9 Watt (Lamp supplied by other) (120/277V only)							

*n/a with four (4) F50TT or F55TT (2x2), three (3) F54T5HO lamps (1x4) or six (6) F54T5HO lamps (2x4)



www.kenall.com

P: 800-4-Kenall

F: 262-891-9701

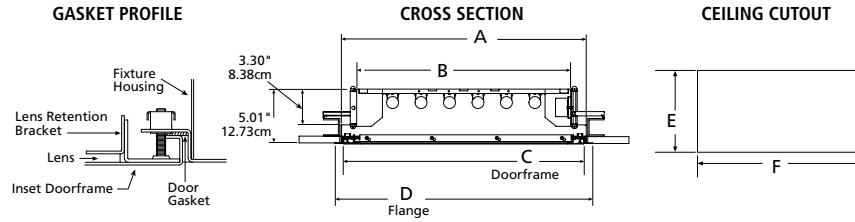
10200 55th Street Kenosha, Wisconsin 53144

When you see this image, you will know the Kenall product shown or described is designed and manufactured in the USA with components purchased from US suppliers, and meets the Buy American requirements under the ARRA. Kenall has not determined the origin of its domestically purchased components or the subcomponents thereof. May be covered by patents found at www.kenall.com/patents. Content of specification sheets is subject to change; please consult www.kenall.com for current product details. © 2018 Kenall Mfg. Co. All rights reserved.

ESEFI_14_22_24T8-101818

SIMPLESEAL™ ENVIRONMENTAL ESEFI SERIES – LF FLANGE MOUNT – INSET DOOR

DIMENSIONAL DATA



DIMENSIONAL DATA (IN INCHES & CENTIMETERS)

	A	B	C	D	E	F
1×4 (T5)	12.20×46.60	9.35×46.60	11.75×46.20	13.35×47.75	12.50	46.88
30.48cm×121.92cm	30.99×118.36	23.75×118.36	29.85×117.35	33.91×121.29	31.75	119.08
1×4 (T8)	12.20×48.13	9.35×48.13	11.80×47.70	13.35×49.27	12.50	48.38
30.48cm×121.92cm	30.99×122.25	23.75×122.25	29.97×121.16	33.91×125.15	31.75	122.89
2×2 (T5)	22.60×22.60	19.75×22.60	22.12×22.60	23.75×23.75	22.88	22.88
60.96cm×60.96cm	57.40×57.40	50.17×57.40	56.18×57.40	60.33×60.33	58.12	58.12
2×2 (T8)	22.60×24.13	19.75×24.13	22.20×23.70	23.75×25.27	22.88	24.38
60.96cm×60.96cm	57.40×61.29	50.17×61.29	56.39×60.20	60.33×64.19	58.12	61.93
2×4 (T5)	22.60×46.60	19.75×46.60	22.12×46.20	23.75×47.75	22.88	46.88
60.96cm×121.92cm	57.40×118.36	50.17×118.36	56.18×117.35	60.33×121.29	58.12	119.08
2×4 (T8)	22.60×48.13	19.75×48.13	22.20×47.70	23.75×49.27	22.88	48.38
60.96cm×121.92cm	57.40×122.25	50.17×122.25	56.39×121.16	60.33×125.15	58.12	122.89

NOTE: Add .25" (.64cm) to each cut-out dimension when Install Frame (IF) or Plaster Frame (PF) Accessory is specified.



www.kenall.com

P: 800-4-Kenall

F: 262-891-9701

10200 55th Street Kenosha, Wisconsin 53144

When you see this image, you will know the Kenall product shown or described is designed and manufactured in the USA with components purchased from US suppliers, and meets the Buy American requirements under the ARRA. Kenall has not determined the origin of its domestically purchased components or the subcomponents thereof. May be covered by patents found at www.kenall.com/patents. Content of specification sheets is subject to change; please consult www.kenall.com for current product details. © 2018 Kenall Mfg. Co. All rights reserved.

ESEFI_14_22_24T8-101818