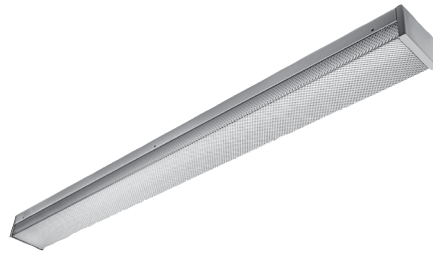


SHERIFF™

TSH5 SERIES

PRODUCT FEATURES:

- » Surface mount – ceiling or wall; 5" x 48"
- » ADA Compliant



PROJECT INFORMATION

Job Name _____

Fixture Type _____

Catalog Number _____

Approved by _____

SPECIFICATIONS

HOUSING: One-piece seam welded 16-gauge type 304 stainless steel construction. See Ordering Information for finish.

LENS: Cold formed .156" P12 polycarbonate lens. See Options for alternate lenses.

FASTENERS: Torx® Head stainless steel fasteners standard. See Options for stainless steel center-pin reject Allen Head (AH) or Phillips Head (PH) fasteners.

FINISH: Brushed stainless steel finish (#4) or white TGIC polyester powder coat – 5-stage pre-treatment; Salt spray test: 1,000 hours; Reflectance: 92%.

ELECTRICAL: Available 3500K, 4000K and 5000K color temperatures, 82 CRI. 120-277VAC and 347VAC, 50/60Hz electrical input with serviceable high power factor electronic, constant-current driver (<20% THD, >0.95 PF). Standard 0-10V dimming with 1-100% range and dim-to-dark capabilities. 165µA max. source current. Consult factory for fluorescent option.

INSTALLATION: Six-point (4-foot) mounting required for Peace of Mind Guarantee®. For housing without wiring and mounting holes, see Field Drilled Installation Holes Option (FDIH).

WARRANTY: Limited five (5) year warranty.

LISTINGS: UL and CUL listed for Wet Locations – covered ceilings only. UL and CUL listed for Damp Locations – wall mount. ADA compliant.



ORDERING INFORMATION (Ex: TSH5-48-BSS-45L40K-DCC-DV)

Model	Length	Finish	Lamp Type	Driver	Voltage	Options
TSH5	48			DCC		
	Nominal Length			Driver Type		Options
	48 4'			DCC 0-10V Dimming LED Driver		.187 .187" P12 Polycarbonate Lens
	Finish			Voltage		AH Allen Head fasteners
	BSS Brushed Stainless Steel Housing			DV 120-277 Volts		FDIH Field Drilled Installation Holes
	PSS Painted Stainless Steel Housing			120 120 Volt		FS Single Fuse & Holder
	Lamp Type			277 277 Volt		KO Two 1/2" EMT Conduit Entry Knockouts (one per end cap)
	45L35K 45 Watt 3500K LED			347 347 Volt		OP Opal Polycarbonate Lens
	45L40K 45 Watt 4000K LED					PH Phillips Head fasteners
	45L50K 45 Watt 5000K LED					SSIN Stainless Steel Interior



www.kenall.com | P: 800-4-Kenall | F: 262-891-9701 | 10200 55th Street Kenosha, Wisconsin 53144, USA

This product complies with the Buy American Act: manufactured in the United States with more than 50% of the component cost of US origin. It may be covered by patents found at www.kenall.com/patents. Content of specification sheets is subject to change; please consult www.kenall.com for current product details. ©2019 Kenall Mfg. Co.

A brand of **legrand**

SHERIFF™

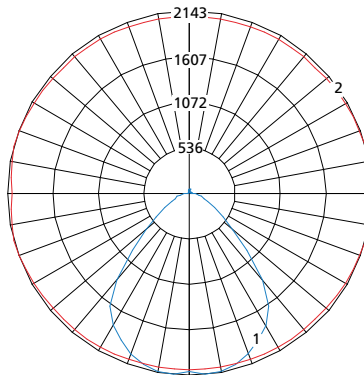
TSH5 SERIES

PERFORMANCE

Lamp Type	Initial Delivered Lumens		Input Power (W)	Drive Current (mA)	Estd. L70 LED Life (Hrs)
	@ 25°C	Efficacy (lm/W)			
45L35K	4,674	97	48	100	80,000
45L40K	4,834	101	48	100	80,000
45L50K	5,165	108	48	100	80,000

Information subject to change without notice. Photometry tested to the IESNA LM-79-08 standard by an ILAC/ISO17025 accredited laboratory. For photometric data, please go to www.kenall.com

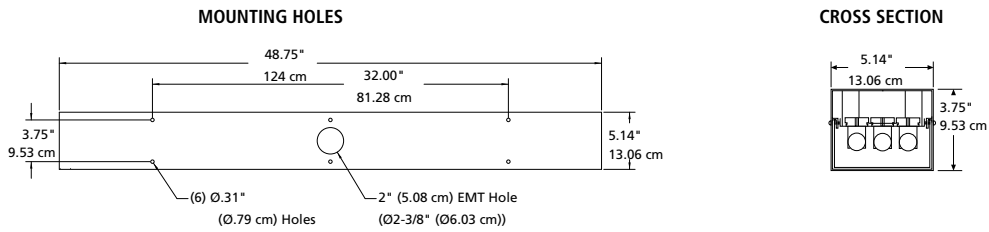
Model: TSH548-xxx-45L40K-DCC-DV



Maximum Candela = 2143 Located At Horizontal Angle = 195, Vertical Angle = 5

- 1 - Vertical Plane Through Horizontal Angles (195-15) (Through Max. Cd.)
- 2 - Horizontal Cone Through Vertical Angle (5) (Through Max. Cd.)

DIMENSIONAL DATA



www.kenall.com | P: 800-4-Kenall | F: 262-891-9701 | 10200 55th Street Kenosha, Wisconsin 53144, USA

This product complies with the Buy American Act: manufactured in the United States with more than 50% of the component cost of US origin. It may be covered by patents found at www.kenall.com/patents. Content of specification sheets is subject to change; please consult www.kenall.com for current product details. ©2019 Kenall Mfg. Co.

A brand of **legrand**