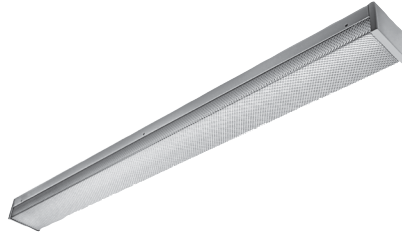


SHERIFF™

SH5 SERIES

PRODUCT FEATURES:

- » Surface mount – ceiling or wall; 5"×24", 5"×36", 5"×48"
- » ADA Compliant
- » 16-gauge cold rolled steel baseplate with seam welded end caps
- » P12 polycarbonate wraparound lens
- » Peace of Mind Guarantee® against breakage



PROJECT INFORMATION

Job Name _____

Fixture Type _____

Catalog Number _____

Approved by _____

SPECIFICATIONS

BASEPLATE: One-piece 16-gauge CRS baseplate with welded corners. Baseplate provided with four-point (2, 3, and 6 foot) or six-point (4 foot) mounting holes and one wireway hole – see Cross Section/Details. TGIC polyester powder coat – 5-stage pre-treatment. Salt spray test: 1,000 hours; Reflectance: 92%. Lens is positioned in baseplate channels and retained with stainless steel Torx® fasteners (two fasteners/2 and 3 foot; six fasteners/4 and 6 foot). Baseplate/end caps mount flush to ceiling or wall surface.

LENS: Cold formed .156" P12 polycarbonate lens. See Options for alternate lenses.

SOCKETS: Shock-resistant sockets with internal locking collar to ensure positive lamp retention.

HARDWARE: Stainless steel Torx® with center pin fasteners secure lens in baseplate channel.

ELECTRICAL: LED: Available 3000K, 3500K, 4000K and 5000K color temperatures, 82 CRI. 120-277VAC and 347VAC, 50/60Hz electrical input with serviceable high power factor electronic, constant-current driver (<20% THD, >0.95 PF). Standard 0-10V dimming with 1-100% range and dim-to-dark capabilities. 165µA max. source current. Optional embedded microwave motion sensor (MS) has factory default settings of 20 minute time out, dims down to 30%. LE: Class P ballasts. Fluorescent electronic 120/277/347 and dual voltage ballasts high power factor.

INSTALLATION: Four-point (2 foot and 3 foot) or six-point (4 foot) mounting required for Peace of Mind Guarantee®.

WARRANTY: Limited five (5) year warranty on LED lamps. Peace of Mind Guarantee against breakage.

LISTINGS: UL and CUL listed for Wet Location – covered ceilings only. UL and CUL listed for Damp Locations – wall mount. ADA Compliant. Suitable for installation into -40°C to 40°C ambient environments, unless otherwise noted.



ORDERING INFORMATION (Ex: SH5-48-45L40K-DCC-DV-FS)

Model	Nom. Length	Lamp Qty	Lamp Type	Ballast/Driver	Ballast Qty	Voltage	Options	Accessories
SH5								
Nominal Length		3' Lengths		Ballast/Driver Type		Options		
24	2'	21	F21T5	DCC	0-10V Dimming LED Driver (LED only)	EL*	Standard Lumen Battery Pack (32°F one-lamp operation)	
36	3'	25	F25T8	IS	Instant Start Electronic <10% THD (T8)	.187	.187" P12 Polycarbonate Lens	
48	4'	39*	F39T5HO (n/a with 3 lamps)	RS	Rapid Start Electronic <10% THD (CFL, T8, T5, T5HO)	AL	Marine Grade Aluminum Housing	
Lamp Quantity*		4' Lengths		SB		BSS		
1	One Lamp	45L30K	45 Watt 3000K LED	Specified Ballast		Brush Stainless Steel Housing		
2	Two Lamps	45L35K	45 Watt 3500K LED	Ballast Quantity*		DLN		
3	Three Lamps	45L40K	45 Watt 4000K LED	1	One	LED Night Light w/Light Level Control (100% - 20% dimming; voltage-specific selection required; n/a 347V)		
		45L50K	45 Watt 5000K LED	2	Two	FS		
Lamp Type		28	F28T5	Voltage		Single Fuse & Holder		
2' Lengths		32	F32T8	120	120 Volt	KO		
14	F14T5	54*	F54T5HO (n/a with 3 lamps)	277	277 Volt	Two 1/2" EMT Conduit Entry Knockouts (one per end cap)		
17	F17T8			347	347 Volt (Consult Factory)	OP		
				DV	120-277 Volts	Opal Polycarbonate Lens		
						PM		
						Pendant Mount		
						PSS		
						Painted Stainless Steel Housing		
						TN*		
						5 Watt Twin Tube NPF Night Light (n/a with 347V or DV)		
						MS		
						Motion Sensor (4' LED Only; n/a with 347V)		
						Accessories		
						CMW		
						Corner Mount Adapter – Wet Location Covered, Ceiling only		
						9500		
						Torx® Screwdriver		

* n/a with LED Lamp Type



www.kenall.com | P: 800-4-Kenall | F: 262-891-9701 | 10200 55th Street Kenosha, Wisconsin 53144, USA

A brand of **legrand**

This product complies with the Buy American Act: manufactured in the United States with more than 50% of the component cost of US origin. It may be covered by patents found at www.kenall.com/patents. Content of specification sheets is subject to change; please consult www.kenall.com for current product details. ©2019 Kenall Mfg. Co.

SHERIFF™

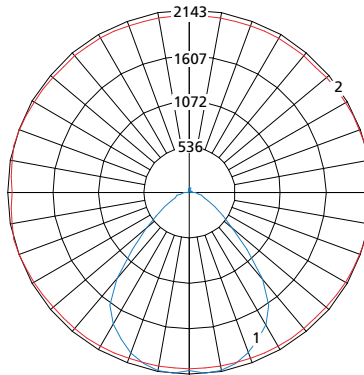
SH5 SERIES

PERFORMANCE

Lamp Type	Initial Delivered Lumens		Input Power (W)	Drive Current (mA)	Estd. L70 LED Life (Hrs)
	@ 25°C	Efficacy (lm/W)			
45L30K	4,534	94	48	100	80,000
45L35K	4,674	97			
45L40K	4,834	101			
45L50K	5,165	108			

Information subject to change without notice. Photometry tested to the IESNA LM-79-08 standard by an ILAC/ISO17025 accredited laboratory. For photometric data, please go to www.kenall.com

Model: SH5-48-45L40K-DCC-DV

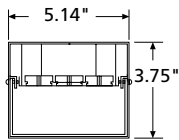


Maximum Candela = 2143 Located At Horizontal Angle = 195, Vertical Angle = 5

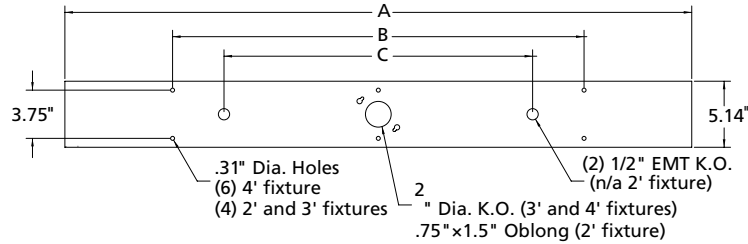
- 1 - Vertical Plane Through Horizontal Angles (195-15) (Through Max. Cd.)
- 2 - Horizontal Cone Through Vertical Angle (5) (Through Max. Cd.)

DIMENSIONAL DATA

CROSS SECTION



MOUNTING HOLES



DIMENSIONAL DATA (IN INCHES)

	A	B	C
5x24	24.75	16.00	n/a
5x36	36.75	24.00	24.00
5x48	48.75	32.00	24.00

