

NOVA I™

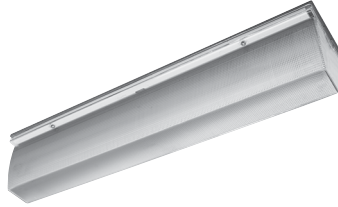
N524 SERIES (6100)

PROJECT INFORMATION

Job Name _____
 Fixture Type _____
 Catalog Number _____
 Approved by _____

PRODUCT FEATURES:

- » Surface mount – ceiling or wall; nominal 5"×24"
- » 16-gauge cold rolled steel baseplate with wraparound UV-stabilized high impact polycarbonate lens
- » Peace of Mind Guarantee® against breakage



SPECIFICATIONS

BASEPLATE: 16-gauge CRS. Baseplate provided with four-point mounting holes and one wireway hole – see Cross Section/Details. White TGIC polyester powder coat – 5-stage pre-treatment. Salt spray test: 1,000 hours; Reflectance: 92%.

LENS: One-piece wraparound lens with two alignment security tabs for baseplate engagement. UV-stabilized, high impact, virgin injection molded clear prismatic polycarbonate. Nominal thickness .125".

ELECTRICAL: Class P ballasts. Fluorescent electronic 120/277/347 and dual voltage ballasts high power factor. 0°F min. starting temperature standard.

SOCKETS: Shock-resistant sockets with internal locking collar to ensure positive lamp retention.

GASKET: Die-cut closed cell neoprene gasket seals lens/housing to mounting surface.

HARDWARE: Four stainless steel Torx® T-20 with center pin fasteners secure lens/housing to baseplate.

INSTALLATION: Four-point mounting required for Peace of Mind Guarantee®. "Twist-out" sections, with gaskets, permit 1/2" conduit access on each end without special adapter.

WARRANTY: Limited one (1) year Kenall fluorescent warranty

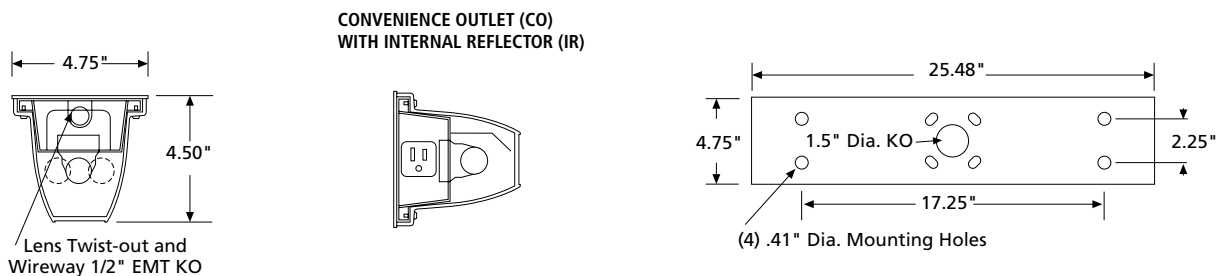
LISTINGS: UL and CUL listed for Wet Locations – covered ceilings only. UL and CUL listed for Damp Locations – wall mount.



ORDERING INFORMATION (Ex: N524-C-1-17-IS-1-DV)

Model	Lens Type	Lamp Qty	Lamp Type	Ballast Type	Ballast Qty	Voltage	Options	Accessories
N524	C				1			
Lens Type		Lamp Type		Options				
C Clear Prismatic		14 F14T5 17 F17T8		EL Standard Lumen Battery Pack (32°F, one-lamp operation) CO Convenience Outlet – Non GFI Receptacle (Wall Mount) 120 Volts only FS Fuse & Holder IR Internal Reflector (Wall Mount) PS Push Switch (Wall Mount) – n/a with 347V TN 5 Watt Twin Tube NPF Night Light (n/a with 347V or DV)				
Lamp Quantity		Ballast Type		Accessories				
1 One Lamp 2 Two Lamps		IS Instant Start Electronic <10% THD (T8) RS Rapid Start Electronic <10% THD (Biax, T8, T5) SB Specified Ballast		CM Corner Mount Adapter (683) Damp Locations only SA Surface Adapter (6100A)				
		Ballast Quantity						
		1 One						
		Voltage						
		120 120 Volts 277 277 Volts 347 347 Volts DV 120-277 Volts						

DIMENSIONAL DATA



www.kenall.com | P: 800-4-Kenall | F: 262-891-9701 | 10200 55th Street Kenosha, Wisconsin 53144, USA

A brand of **legrand**

This product complies with the Buy American Act: manufactured in the United States with more than 50% of the component cost of US origin. It may be covered by patents found at www.kenall.com/patents. Content of specification sheets is subject to change; please consult www.kenall.com for current product details. ©2022 Kenall Mfg. Co.