

# MEDMASTER™

## Single-Function Patient Room Luminaires

### MWUD SERIES

#### PRODUCT FEATURES:

- » Wall-mounted, single-function luminaire in 24" and 48" lengths
- » Up and down lighting via diffused lens for minimized glare
- » Extruded aluminum body with die-cast aluminum end-cap construction
- » High-output, high-CRI LED lamp sources
- » Standard antimicrobial finish



#### PROJECT INFORMATION

Job Name \_\_\_\_\_

Fixture Type \_\_\_\_\_

Catalog Number \_\_\_\_\_

Approved by \_\_\_\_\_

#### SPECIFICATIONS

**HOUSING:** Marine grade aluminum body with die-cast end caps. Housing attaches to mounted baseplate. Housing secured with countersunk fasteners. TGIC polyester powder coat – 5-stage pre-treatment. Salt spray test: 1,000 hours. Antimicrobial finish standard on exposed surfaces of installed luminaire.

**BASEPLATE:** 16-gauge CRS baseplate. TGIC polyester powder coat – 5-stage pre-treatment. Salt spray test: 1,000 hours; Reflectance: 92%.

**LENS:** UV-stabilized, high impact resistant, 100% DR frost acrylic. Smooth exterior. Nominal thickness .080". Lens securely positioned in body channels.

**ELECTRICAL:** Available 3000K, 3500K and 4000K color temperatures, 82 CRI. 120-277VAC, 50/60Hz electrical input with serviceable high power factor electronic, constant-current driver (<20% THD, >0.95 PF). Standard 0-10V dimming with 1-100% range and dim-to-dark capabilities (1-100% only with 347V); 165µA max. source current. Optional LVCD control provides low-voltage patient interface, controlling the primary light source with dimming control.

**INSTALLATION:** Standard four-point (24") or six-point (48") mounting.

**WARRANTY:** Limited five (5) year LED warranty.

**LISTINGS:** Certified to UL standards by Intertek Testing Laboratory for Damp Locations.



#### ORDERING INFORMATION (Ex: MWUD-48-MW-45L-35K8-DIM1-DV-LVC)

Model	Length	Finish	Lamp Power	Lamp Color	Driver Type	Voltage	Options
<b>MWUD</b>					<b>DIM1</b>		
<b>Nominal Length</b>			<b>Lamp Power</b>		<b>Voltage</b>		
24	24"		25L	25 Watt LED (24" only)	DV	120-277VAC	
48	48"		45L	45 Watt LED (48" only)	120	120VAC	
<b>Finish</b>			<b>Lamp Color</b>		<b>Options</b>		
MW	Antimicrobial Matte White		30K8	3000K / 82CRI min.	277	277VAC	LEL <sup>▲</sup> Emergency Battery Pack
MB	Antimicrobial Matte Black		35K8	3500K / 82CRI min.	347	347VAC	ES Emergency Shut-Off Switch (120V only)
SL	Antimicrobial Silver		40K8	4000K / 82CRI min.			FS Fuse & Holder
CC	Custom Color (Consult Factory)						LVC <sup>▲</sup> Low Voltage Controller (Click <a href="#">here</a> for specifications)
			<b>Driver Type</b>				LVCD <sup>▲</sup> Low Voltage Controller with Dimming (Click <a href="#">here</a> for specifications)
			DIM1	0-10V Dimming to 1%			TR Tamper Resistant Torx <sup>®</sup> with center pin Fastener
							PCL Pull Chain, Left Side (120V only)
							PCR Pull Chain, Right Side (120V only)
							SW Rocker Switch (voltage-specific selection required; n/a 347V)
							GFI <sup>**</sup> Ground Fault Outlet (120V only)
							▲ n/a with 347V
							** Not available in combination with LEL, PCL, PCR, or SW options.

**ACCESSORIES ORDERED SEPARATELY**  
**MPWS** Low Voltage Wall Switch (Click [here](#) for Specifications)



www.kenall.com | P: 800-4-Kenall | F: 262-891-9701 | 10200 55th Street Kenosha, Wisconsin 53144, USA

This product complies with the Buy American Act: manufactured in the United States with more than 50% of the component cost of US origin. It may be covered by patents found at www.kenall.com/patents. Content of specification sheets is subject to change; please consult www.kenall.com for current product details. ©2019 Kenall Mfg. Co.

A brand of **legrand**

# MEDMASTER™

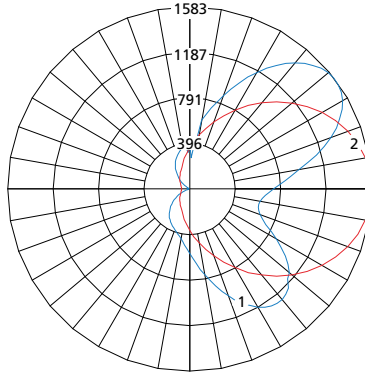
## Single-Function Patient Room Luminaires

### MWUD SERIES

PERFORMANCE	Initial Delivered Lumens, by CCT (lm)			Efficacy (lm/W)	Input Power (W)	Drive Current (mA)	Estd. L70 LED Life (Hrs)
	30K8	35K8	40K8				
Lamp Power	30K8	35K8	40K8	Efficacy (lm/W)	Input Power (W)	Drive Current (mA)	Estd. L70 LED Life (Hrs)
25L	2,832	2,920	3,019	100 - 107	28	100	80,000
45L	5,156	5,316	5,497	108 - 115	48	100	80,000

Information subject to change without notice. Visit [www.kenall.com](http://www.kenall.com) for IES files and additional information.

Model: MWUD-48-yy-FA-45L-40K8-DIM1-zzz

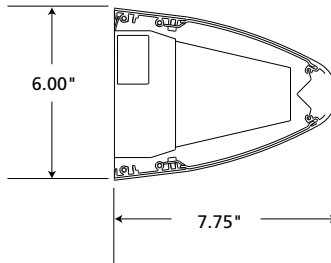


Maximum Candela = 1583 Located At Horizontal Angle = 0, Vertical Angle = 127.5

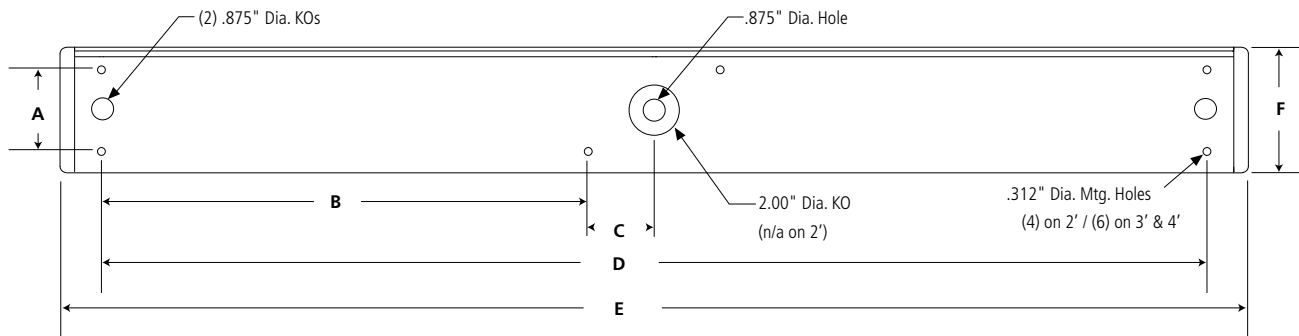
- 1 - Vertical Plane Through Horizontal Angles (0-180) (Through Max. Cd.)
- 2 - Horizontal Cone Through Vertical Angle (127.5) (Through Max. Cd.)

### DIMENSIONAL DATA

#### SIDE VIEW



#### BACK VIEW



#### DIMENSIONAL DATA (IN INCHES)

	A	B	C	D	E	F
24"	3.25	n/a	n/a	21.00	25.61	6.00
48"	3.25	19.38	2.63	44.00	49.61	6.00



[www.kenall.com](http://www.kenall.com) | P: 800-4-Kenall | F: 262-891-9701 | 10200 55th Street Kenosha, Wisconsin 53144, USA

A brand of **legrand**

This product complies with the Buy American Act: manufactured in the United States with more than 50% of the component cost of US origin. It may be covered by patents found at [www.kenall.com/patents](http://www.kenall.com/patents). Content of specification sheets is subject to change; please consult [www.kenall.com](http://www.kenall.com) for current product details. ©2019 Kenall Mfg. Co.