

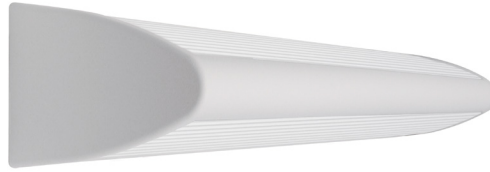
# MEDMASTER™

## Patient Room Luminaires

### MWUD SERIES using Indigo-Clean Technology

#### PRODUCT FEATURES:

- » Wall-mounted, single-function luminaire with up and down lighting
- » Provides environmental disinfection and effective, efficient lighting performance via visible LED light
- » Dual-Mode Indigo-Clean Technology is independently tested to kill 94% of SARS CoV-2 and Influenza-A\*\*\*, in addition to MRSA
- » Single-Mode Indigo-Clean Technology is independently tested to kill harmful bacteria, such as Staph\*, including MRSA\*\*



#### PROJECT INFORMATION

Job Name \_\_\_\_\_

Fixture Type \_\_\_\_\_

Catalog Number \_\_\_\_\_

Approved by \_\_\_\_\_

#### SPECIFICATIONS

**HOUSING:** Marine grade aluminum body with die-cast end caps. Housing attaches to mounted baseplate. Housing secured with countersunk fasteners. TGIC polyester powder coat – 5-stage pre-treatment. Salt spray test: 1,000 hours. Antimicrobial finish standard on exposed surfaces of installed luminaire.

**BASEPLATE:** 16-gauge CRS baseplate. TGIC polyester powder coat – 5-stage pre-treatment. Salt spray test: 1,000 hours; Reflectance: 92%.

**LENS:** UV-stabilized, high impact resistant, 100% DR frost acrylic. Smooth exterior. Nominal thickness .080". Lens securely positioned in body channels.

**ELECTRICAL: (Single- and Dual-Mode ICT)** Serviceable mid-power white and 405nm Indigo LED array. Available 3200K, 3700K and 4300K color temperatures with 3-step MacAdam variation allowance. Minimum 82 CRI standard. 120-277VAC and 347VAC electrical input with serviceable high power factor electronic, constant-current drivers (<10% THD, >0.90 PF). Minimum 85% driver efficiency. Standard 0-10V dimming with 1-100% range and dim-to-dark capabilities. 165µA maximum source current. **Single-Mode ICT** provides a single, white disinfection operational mode. **Dual-Mode ICT** provides two operational modes based on room occupancy. White Disinfection Mode is a white LED array for ambient lighting plus a simultaneous low-power 405nm LED array for low-level, continuous and safe environmental disinfection. Indigo Disinfection Mode is a higher-level 405nm array for continuous safe environmental disinfection during periods of room vacancy. The operational mode is determined via internal low-voltage device based upon the input signal provided by an external control device/system, such as the [IC150](#) product. Luminaire dimming is overridden in this operational state. Refer to the [Kenall Dual-Mode ICT Control Application Guide](#) for further description.

**INSTALLATION:** Standard six-point wall mounting via fasteners supplied by others.

**WARRANTY:** Limited five (5) year LED warranty.

**LISTINGS:** Certified to UL standards by Intertek Testing Laboratory for Damp Locations. EPA Est. No. 99283-WI-1.

\* Per independent lab report #SGS-09S17036476. Contact Kenall for a copy of this report.

\*\*Antimicrobial Activity of a Continuous Visible Light Disinfection System by Rutala, et. al, ID Week 2016.

\*\*\*Refer to [www.indigo-clean.com](http://www.indigo-clean.com) for details.



#### ORDERING INFORMATION (Ex: MWUD-48-MW-55C-37K8-DIM1-DV-LVC)

Model	Length	Finish	Lamp Power	Lamp Color	Driver Type	Voltage	Options
<b>MWUD</b>	<b>48</b>				<b>DIM1</b>		
<b>Nominal Length</b>			<b>Lamp Power</b>			<b>Voltage</b>	
48 48"			55C 55W Single-Mode ICT			DV 120-277VAC	
			23I/55C 55W Dual-Mode ICT			120 120VAC	
						277 277VAC	
						347 347VAC	
<b>Finish</b>			<b>Lamp Color</b>			<b>Options</b>	
MW Antimicrobial Matte White			32K8 3200K / 80CRI min.			LEL <sup>▲</sup> 8.4W Emergency Battery Pack	
MB Antimicrobial Matte Black			37K8 3700K / 80CRI min.			ES Emergency Shut-Off Switch (120V only)	
SL Antimicrobial Silver			43K8 4300K / 80CRI min.			FS Fuse & Holder	
CC Custom Color (Consult Factory)						LVCA <sup>**</sup> Low Voltage Controller (Click <a href="#">here</a> for specifications)	
						LVCD <sup>**</sup> Low Voltage Controller with Dimming (Click <a href="#">here</a> for specifications)	
						TR Tamper Resistant Torx <sup>®</sup> with center pin Fastener	
						PCL* Pull Chain, Left Side (120V only)	
						PCR* Pull Chain, Right Side (120V only)	
						SW* Rocker Switch (voltage-specific selection required; n/a 347V)	
						GFI** Ground Fault Outlet (120V only)	
			<b>Driver Type</b>				
			DIM1 0-10V Dimming to 1%				
						▲ n/a with 347V	
						* n/a with Dual-Mode ICT	
						** Not available in combination with LEL, PCL, PCR, or SW options.	

#### ACCESSORIES ORDERED SEPARATELY

- MPWS Low Voltage Wall Switch (Click [here](#) for Specifications)
- IC150 External Room Control System for Dual-Mode ICT Products (click [here](#) for Specifications)



www.kenall.com | P: 800-4-Kenall | F: 262-891-9701 | 10200 55th Street Kenosha, Wisconsin 53144, USA

This product complies with the Buy American Act: manufactured in the United States with more than 50% of the component cost of US origin. It may be covered by patents found at [www.kenall.com/patents](http://www.kenall.com/patents). Content of specification sheets is subject to change; please consult [www.kenall.com](http://www.kenall.com) for current product details. ©2019 Kenall Mfg. Co.

A brand of **legrand**

# MEDMASTER™

## Patient Room Luminaires

### MWUD SERIES using Indigo-Clean Technology

#### PERFORMANCE

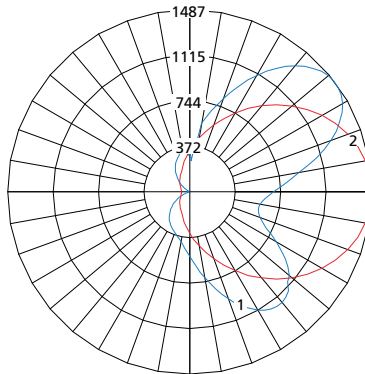
Technology	Length	Lamp Code	Lumen Output by Color (lm) <sup>1</sup>			Efficacy (lm/W)	Power Consumption <sup>2</sup>			Estd L70 LED Life (Hrs)
			32K8	37K8	43K8		Occupied (W)	LPD (W)	Unoccupied (W)	
Single-Mode ICT	4'	55C	5,034	5,165	5,217	84 - 87	60	50	n/a	80,000
Dual-Mode ICT	4'	23/55C	5,034	5,165	5,217	84 - 87	60	50	29	80,000

<sup>1</sup>Information subject to change without notice. Visit [www.kenall.com](http://www.kenall.com) for IES files and additional information.

<sup>2</sup>Lighting Power and Energy Calculations:

- Use **Occupied Power** for total electrical load calculations. Use this value to estimate branch circuit lighting loads.
- Use **LPD Power** for lighting power density calculations. Only the power attributed to white light is required per NEMA LSD EB 84-202X. Power used toward germicidal disinfection has been removed for this calculation.
- Use **Unoccupied** and **Occupied Power** for Energy calculations to determine the power consumed over time based on the use of the space.

Model: MWUD-48-Y-55C-37K8-DIM1-z and MWUD-48-Y-23/55C-37K8-DIM1-z

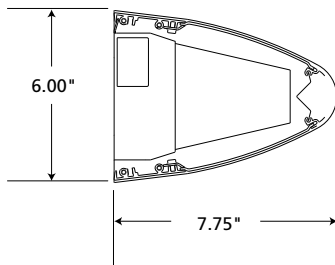


Maximum Candela = 1487 Located At Horizontal Angle = 0, Vertical Angle = 127.5

- 1 - Vertical Plane Through Horizontal Angles (0-180) (Through Max. Cd.)
- 2 - Horizontal Cone Through Vertical Angle (127.5) (Through Max. Cd.)

#### DIMENSIONAL DATA

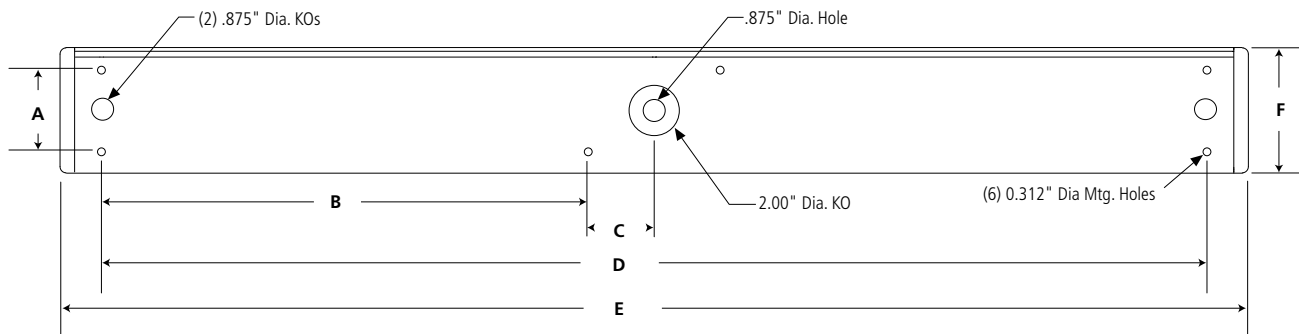
##### SIDE VIEW



##### DIMENSIONAL DATA (IN INCHES)

	A	B	C	D	E	F
48"	3.25	19.38	2.63	44.00	49.61	6.00

##### BACK VIEW



[www.kenall.com](http://www.kenall.com) | P: 800-4-Kenall | F: 262-891-9701 | 10200 55th Street Kenosha, Wisconsin 53144, USA

A brand of **legrand**

This product complies with the Buy American Act: manufactured in the United States with more than 50% of the component cost of US origin. It may be covered by patents found at [www.kenall.com/patents](http://www.kenall.com/patents). Content of specification sheets is subject to change; please consult [www.kenall.com](http://www.kenall.com) for current product details. ©2019 Kenall Mfg. Co.