

MEDMASTER™

Behavioral Healthcare Luminaires

MMAC SERIES - LED

PRODUCT FEATURES:

- » Surface, recessed grid or recessed flange mount – 1'x4', 2'x2', 2'x4'
- » Center diffuser provides direct/indirect ambient lighting
- » Heavy-duty one-piece TIG and spot welded housing
- » Doorframe with Polycarbonate lens secured with Torx® fasteners for security



PROJECT INFORMATION

Job Name _____

Fixture Type _____

Catalog Number _____

Approved by _____

SPECIFICATIONS

HOUSING: Die-formed prime grade material as specified – see Ordering Information. TIG and spot welded construction.

DOOR: One-piece die-formed prime grade material as specified – see Ordering Information. Doorframe supported to housing with two aircraft cables. Corners continuously seam welded and smooth with no post grinding (TIG).

FINISH: TGIC polyester powder coat – 5-stage pre-treatment. Salt spray test: 1,000 hours; Reflectance: 92%. Optional antimicrobial finish.

OPTICS: Extruded high-efficiency frosted DR acrylic inner diffuser. Clear impact-resistant polycarbonate outer lens as specified—see Ordering Information.

GASKET: Closed cell silicone gasket seals door to housing.

FASTENERS: Torx® head with center pin hardened security screws. Fully recessed.

ELECTRICAL: Available 3500K, 4000K and 5000K color temperatures, 82 CRI. 120-277VAC, or 347VAC 50/60Hz electrical input with serviceable high power factor electronic, constant-current driver (<20% THD, >0.95 PF). Standard 0-10V dimming with 1-100% range and dim-to-dark capabilities (non dim-to-dark with 347V); 330µA maximum source current. Optional LVCD control provides low-voltage patient interface, controlling the primary light engine independently with dimming control, and if ordered DLN and DLNA option independently without dimming.

INSTALLATION: SURFACE MOUNT: Four .312" diameter holes. GRID MOUNT: Designed for 1" and 1.5" grid. (Housing includes hanging brackets to secure housing with wire to super structure). FLANGE MOUNT: Yoke mounting hardware & brackets included. Install Frame and Plaster Frames both positively locates yoke brackets within ceiling opening assures alignment of fixture. Install frame has no need for drywall backing; backing is supplied on the frame brackets.

WARRANTY: Limited five (5) year warranty.

LISTINGS: Luminaire is certified to UL Standards by Intertek Testing Laboratory for Wet Locations and non-IC recessed installations. ETL certified IP65 per IEC 60598. NSF2 Splash/Non-Food Zone. Approved by the New York State - Office of Mental Health.



ORDERING INFORMATION (Ex: MMAC24-F-0/0-9-FA-90L40K-DCC-DV-FS)

Model	Mounting	Door/Housing	Outer Lens	Diffuser Type	Lamp Type	Driver Type	Voltage	Options	Accessory
Model				Diffuser Type		Driver Type			
MMAC14 1'x4'				FA Frosted Acrylic		DCC 0-10V Dimming Constant Current			
MMAC22 2'x2'				CAP▲ Clear Acrylic with Perforated Insert					
MMAC24 2'x4'									
Mounting Options				Lamp Type		Input Voltage			
F Flange				1x4		DV 120-277VAC, 50/60Hz			
S Surface				45L35K 45 Watt 3500K LED		120 120VAC, 50/60Hz			
G Grid (1" and 1.5")				45L40K 45 Watt 4000K LED		277 277VAC, 50/60Hz			
				45L50K 45 Watt 5000K LED		347 347VAC, 50/60Hz			
Door/Housing Material						Options			
0 14-Ga CRS (Painted)				2x2		AMF Antimicrobial Finish on exposed surfaces			
1 16-Ga CRS (Painted)				45L35K 45 Watt 3500K LED		LEL* LED Emergency Battery Pack (n/a in combination with LVC or LVCD on 2x2 fixture)			
2 18-Ga CRS (Painted) (n/a as Door Material)				45L40K 45 Watt 4000K LED		DLN LED Night Light with 100%-20% Light Level Control (Voltage specific selection required; n/a on 1x4 fixture)			
A 18-Ga SS (Brushed) (n/a as Door Material)				45L50K 45 Watt 5000K LED		DLNA Amber LED Night Light with 100%-20% Light Level Control (Voltage specific selection required; n/a on 1x4 fixture)			
B 18-Ga SS (Painted) (n/a as Door Material)				2x4		FS Fuse & Holder			
3 14-Ga SS (Painted)				45L35K 45 Watt 3500K LED		LVC* Low Voltage Controller (Click here for specifications)			
4 16-Ga SS (Painted)				45L40K 45 Watt 4000K LED		LVCD* Low Voltage Controller with Dimming (Click here for specifications)			
6 14-Ga SS (Brushed)				45L50K 45 Watt 5000K LED		TC T-Bar Clips (Grid Mount only)			
7 16-Ga SS (Brushed)				67L35K 67 Watt 3500K LED					
				67L40K 67 Watt 4000K LED		Accessory			
Outer Lens Type				67L50K 67 Watt 5000K LED		IF Install Frame (Flange only; add .375 to each Ceiling Cutout dimension)			
7 .187" Clear Polycarbonate				90L35K 90 Watt 3500K LED					
9 .250" Clear Polycarbonate				90L40K 90 Watt 4000K LED					
B .375" Clear Polycarbonate				90L50K 90 Watt 5000K LED					

* n/a with 347V

▲ Selection results in significant reduction in lighting performance

ACCESSORIES ORDERED SEPERATELY

MPWS Low Voltage Wall Switch (Click [here](#) for Specifications)



www.kenall.com | P: 800-4-Kenall | F: 262-891-9701 | 10200 55th Street Kenosha, Wisconsin 53144, USA

A brand of Legrand

This product complies with the Buy American Act: manufactured in the United States with more than 50% of the component cost of US origin. It may be covered by patents found at www.kenall.com/patents. Content of specification sheets is subject to change; please consult www.kenall.com for current product details. ©2019 Kenall Mfg. Co.

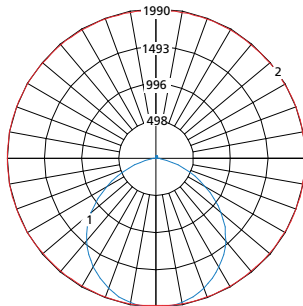
MMAC SERIES - LED

PERFORMANCE

Model	Optic		Lamp Power	Initial Delivered Lumens, By Lamp Color			Efficacy (lm/W)	Input Power (W)	Estd. L70 LED Life (hrs)
	Diffuser Type	Outer Lens		35K	40K	50K			
MMAC14	FA	7	45L	4,042	4,180	4,466	82 - 91	49	80,000
		9	45L	4,049	4,187	4,474	83 - 91	49	80,000
		B	45L	3,865	3,997	4,270	79 - 87	49	80,000
MMAC22	FA	7	45L	4,131	4,272	4,564	84 - 93	49	80,000
		9	45L	4,138	4,280	4,572	84 - 93	49	80,000
		B	45L	3,950	4,085	4,364	81 - 89	49	80,000
MMAC24	FA	7	45L	5,182	5,359	5,726	106 - 117	49	80,000
			67L	7,884	8,153	8,711	110 - 121	72	80,000
			90L	10,131	10,477	11,193	105 - 116	97	80,000
		9	45L	5,192	5,369	5,736	106 - 117	49	80,000
			67L	7,899	8,168	8,727	110 - 121	72	80,000
			90L	10,150	10,496	11,214	105 - 116	97	80,000
		B	45L	4,956	5,125	5,476	101 - 112	49	80,000
			67L	7,540	7,797	8,330	105 - 116	72	80,000
			90L	9,688	10,019	10,704	100 - 111	97	80,000

Displayed information is for type 'FA' diffuser. Apply 0.52 derating factor to provided output values for 'CAP' diffuser option. Photometry tested to the IESNA LM-79-08 standard by an ILAC/ISO17025 accredited laboratory. For photometric data, please go to www.kenall.com

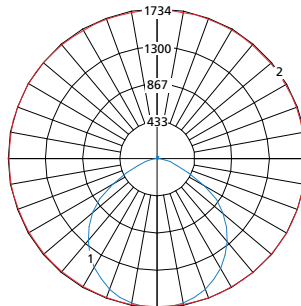
Model: MMAC14-x-y-z-9-FA-45L40K-DCC-120



Maximum Candela = 1990 Located At Horizontal Angle = 75, Vertical Angle = 2.5

- 1 - Vertical Plane Through Horizontal Angles (75-255) (Through Max. Cd.)
- 2 - Horizontal Cone Through Vertical Angle (2.5) (Through Max. Cd.)

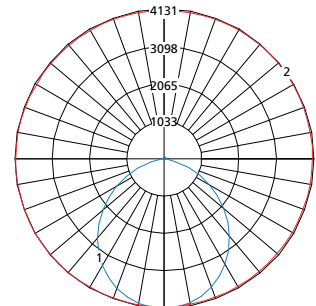
Model: MMAC22-x-y-z-9-FA-45L40K-DCC-120



Maximum Candela = 1734 Located At Horizontal Angle = 90, Vertical Angle = 2.5

- 1 - Vertical Plane Through Horizontal Angles (90-270) (Through Max. Cd.)
- 2 - Horizontal Cone Through Vertical Angle (2.5) (Through Max. Cd.)

Model: MMAC24-x-y-z-9-FA-90L40K-DCC-120



Maximum Candela = 4131 Located At Horizontal Angle = 75, Vertical Angle = 2.5

- 1 - Vertical Plane Through Horizontal Angles (75-255) (Through Max. Cd.)
- 2 - Horizontal Cone Through Vertical Angle (2.5) (Through Max. Cd.)



MEDMASTER™

Behavioral Healthcare Luminaires

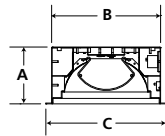
MMAC SERIES - LED

PERFORMANCE

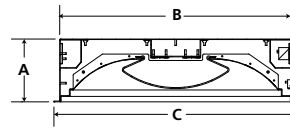
GRID DIMENSIONAL DATA (IN INCHES)

	A	B	C	D	E
1x4	5.56	10.60	11.75	46.60	47.75
2x2	6.10	22.60	23.75	22.60	23.75
2x4	6.10	22.60	23.75	46.60	47.75

CROSS SECTION



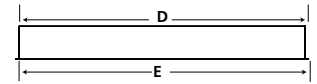
MAC14



MAC22 & MAC24

GRID MOUNT

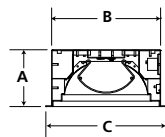
SIDE VIEW



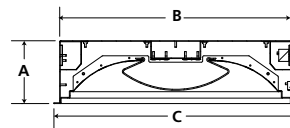
FLANGE DIMENSIONAL DATA (IN INCHES)

	A	B	C	D	E	F	G
1x4	5.56	10.60	11.75	46.60	47.75	30.00	5.25
Recommended Ceiling Cutout: 10.88" x 46.88"							
2x2	6.10	22.60	23.75	22.60	23.75	12.00	12.00
Recommended Ceiling Cutout: 22.88" x 22.88"							
2x4	6.10	22.60	23.75	46.60	47.75	30.00	12.00
Recommended Ceiling Cutout: 22.88" x 46.88"							

CROSS SECTION



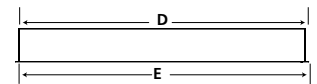
MAC14



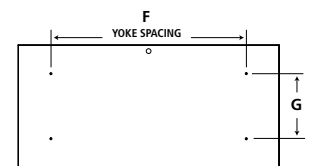
MAC22 & MAC24

FLANGE MOUNT

SIDE VIEW



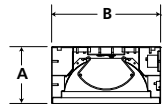
TOP VIEW



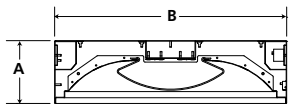
SURFACE DIMENSIONAL DATA (IN INCHES)

	A	B	C	D	E
1x4	5.56	10.60	30.00	5.25	46.60
2x2	6.13	22.60	12.00	12.00	22.60
2x4	6.13	22.60	30.00	12.00	46.60

CROSS SECTION



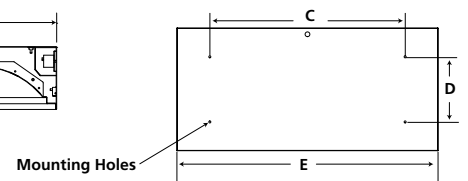
MAC14



MAC22 & MAC24

SURFACE MOUNT

TOP VIEW



www.kenall.com | P: 800-4-Kenall | F: 262-891-9701 | 10200 55th Street Kenosha, Wisconsin 53144, USA

A brand of **legrand**

This product complies with the Buy American Act: manufactured in the United States with more than 50% of the component cost of US origin. It may be covered by patents found at www.kenall.com/patents. Content of specification sheets is subject to change; please consult www.kenall.com for current product details. ©2019 Kenall Mfg. Co.