

MILLENIUM STRETCH™

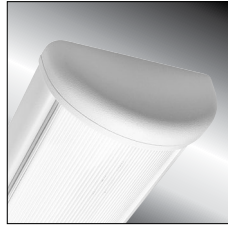
MLRS8 SERIES – GEOMETRIC/CONTINUOUS RUN

PROJECT INFORMATION

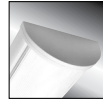
Job Name _____
 Fixture Type _____
 Catalog Number _____
 Approved by _____

PRODUCT FEATURES:

- » Surface mount – wall or ceiling; 8" x 48"
- » Continuous row mount luminaires
- » ADA compliant



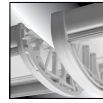
Rounded End Cap



Flat End Cap



Reveal End Cap



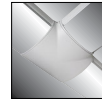
Continuous Row
Joiner Band



Node "L"
2-Way



Node "N"
Inline



Node "T"
3-Way



Node "X"
4-Way

SPECIFICATIONS

HOUSING: Marine grade aluminum. Extruded body with die-cast end caps. Housing, with end caps, post assembly TGIC polyester powder coat finished – 5-step pre-treatment. Each pattern run of luminaires consists of one or more "L", "N", "T", or "X" node. See ordering information to specify quantities. NOTE: Contact factory for pattern layout details.

REFLECTOR: Full reflector/wire cover – 97% reflectivity.

LENS: UV-stabilized, high impact extruded pearlescent polycarbonate. Smooth exterior, linear prismatic interior. Nominal thickness .156". Lens securely positioned in body channels and end caps. Lens locked in place with tamper-resistant stainless steel Torx® with center pin fasteners and sealed with closed cell gaskets.

END CAPS: Marine grade die-cast aluminum. Three styles available: Flat, Rounded and Reveal. Conduit and "Wiremold™" ready" knockouts visible only from interior of end cap (Flat and Rounded styles only).

NODES: Marine grade cast aluminum cover mounted to 18-gauge mounting plate. Cover includes knockouts for Wiremold™ entry (not available in "X" 4-way node).

SOCKETS: Shock-resistant sockets with internal locking collar to ensure positive lamp retention.

HARDWARE: Four stainless steel, tamper-resistant Torx® fasteners secure lens in housing body's lens channel. Electrical Quick Connector supplied (Specify Circuit Qty, see below).

ELECTRICAL: Available 3500K, 4000K and 5000K color temperatures, 82 CRI. 120-277VAC, 50/60Hz electrical input with serviceable high power factor electronic, constant-current driver (<20% THD, >0.95 PF). Standard 0-10V dimming with 3-100% range, maximum driver source of 250 µA. Consult factory for fluorescent option.

INSTALLATION: Standard six-point mounting per fixture recommended.

WARRANTY: limited ten (10) year warranty for LED Lamps.

LISTINGS: UL and CUL listed for Damp Location only. ADA compliant. Suitable for use as a raceway; consult factory. Suitable for use in continuous row.



ORDERING INFORMATION (Ex: MLRS8GMS-4/48-0/L-0/T-4/X-0/N-R-MB-PP-45L40K-DCC-120)

Model	Fixture Qty	Node L	Node T	Node X	Node N	End Cap*	Finish	Lens	Lamp Type	Driver	Voltage	Options
MLRS8GMS	/48	/L	/T	/X	/N			PP				

Fixture Quantity (replace "x" with qty)
 (x)/48 Nominal 48" housing

Node L (replace x with qty)
 (x)/L Node "L" 2-Way Intersecting

Node T (replace x with qty)
 (x)/T Node "T" 3-Way Intersecting

Node X (replace x with qty)
 (x)/X Node "X" 4-Way Intersecting

Node N (replace x with qty)
 (x)/N Node "N" Inline

End Caps (if required)
R Rounded
F Flat
RV Reveal

Finish
MW Matte White
MB Matte Black
LG Light Gray
CC Custom Color (Consult Factory)

Lens
PP Pearlescent Polycarbonate

Lamp Type
45L35K 45 Watt 3500K LED
45L40K 45 Watt 4000K LED
45L50K 45 Watt 5000K LED
67L35K 67 Watt 3500K LED
67L40K 67 Watt 4000K LED
67L50K 67 Watt 5000K LED
90L35K 90 Watt 3500K LED
90L40K 90 Watt 4000K LED
90L50K 90 Watt 5000K LED

Driver Type
DCC Dimming Constant Current (LED)

Voltage
120 120 Volts
277 277 Volts
347 347 Volts (Consult Factory)
DV 120-277 Volts

Options
FS Single Fuse & Holder
PH Phillips Head Fasteners
PM Pendant Mount (Max. 3/8NPT stems by others; damp only)
XC Auxiliary Circuit



www.kenall.com | P: 800-4-Kenall | F: 262-891-9701 | 10200 55th Street Kenosha, Wisconsin 53144, USA

This product complies with the Buy American Act: manufactured in the United States with more than 50% of the component cost of US origin. It may be covered by patents found at www.kenall.com/patents. Content of specification sheets is subject to change; please consult www.kenall.com for current product details. ©2019 Kenall Mfg. Co.

A brand of **legrand**

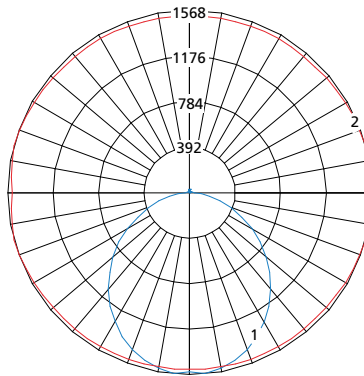
MILLENNIUM STRETCH™

MLRS8 SERIES – GEOMETRIC/CONTINUOUS RUN

PERFORMANCE	Initial Delivered Lumens					
	Lamp Type	@ 25°C	Efficacy (lm/W)	Input Power (W)	Drive Current (mA)	Estd. L70 LED Life (Hrs)
	45L35K	4632	95	50	94	150,000
	45L40K	4938	101	50	94	150,000
	45L50K	5136	103	50	94	150,000
	67L35K	6640	89	74	66	150,000
	67L40K	7078	95	74	66	150,000
	67L50K	7362	99	74	66	150,000
	90L35K	8445	84	100	94	150,000
	90L40K	9003	90	100	94	150,000
	90L50K	9363	93	100	94	150,000

Displayed information is for selected luminaires only. Additional wattages and color temperatures are also available. Visit www.kenall.com for additional information.

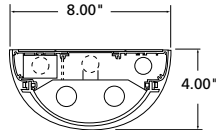
Model: MLRS8-48-F-MW-PP-1-45L40K-DCC-1-DV



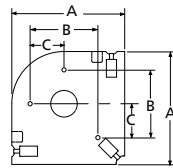
Maximum Candela = 1370 Located At Horizontal Angle = 15, Vertical Angle = 5

- 1 - Vertical Plane Through Horizontal Angles (15-195) (Through Max. Cd.)
- 2 - Horizontal Cone Through Vertical Angle (5) (Through Max. Cd.)

DIMENSIONAL DATA

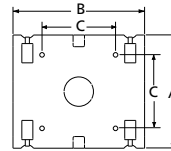


Please provide reflected ceiling plans to factory for dimensional data and factory supplied fixture layout with mounting information. Dimensions A and B are outside dimensions. Dimension C is mounting holes.



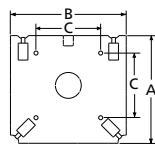
"L" NODE

SERIES	Dimensions			Part #
	A	B	C	
MLRS8S	8.33"	5.00"	2.50"	ML8L



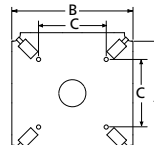
"N" NODE

SERIES	Dimensions			Part #
	A	B	C	
MLRS8S	7.70"	8.95"	5.00"	ML8N



"T" NODE

SERIES	Dimensions			Part #
	A	B	C	
MLRS8S	8.33"	8.95"	5.00"	ML8T



"X" NODE

SERIES	Dimensions			Part #
	A	B	C	
MLRS8S	8.95"	8.95"	5.00"	ML8X



www.kenall.com | P: 800-4-Kenall | F: 262-891-9701 | 10200 55th Street Kenosha, Wisconsin 53144, USA

A brand of **legrand**

This product complies with the Buy American Act: manufactured in the United States with more than 50% of the component cost of US origin. It may be covered by patents found at www.kenall.com/patents. Content of specification sheets is subject to change; please consult www.kenall.com for current product details. ©2019 Kenall Mfg. Co.