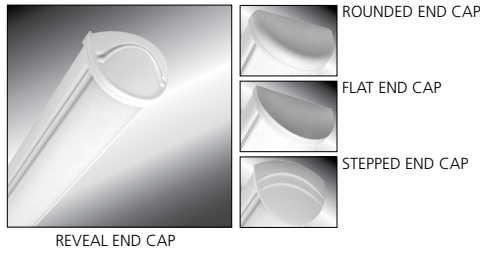


MILLENIUM STRETCH™

MLRS5 SERIES – VANITY

PRODUCT FEATURES:

- » Surface wall mount – 5"×24", 36" and 48"
- » Extruded aluminum housing with decorative end caps
- » Low-profile –ADA compliant



PROJECT INFORMATION	
Job Name	_____
Fixture Type	_____
Catalog Number	_____
Approved by	_____

SPECIFICATIONS

HOUSING: Marine grade aluminum. Extruded body with die-cast end caps. Housing, with end caps, post assembly TGIC polyester powder coat finished – 5-step pre-treatment. See Ordering Information for standard, optional and custom finishes.

REFLECTOR: Full reflector/wire cover – 92% reflectivity.

LENS: UV-stabilized, high impact extruded clear acrylic. Smooth exterior, linear prismatic interior. Nominal thickness .156". Lens securely positioned in body channels and end caps. Lens locked in place with tamper-resistant stainless steel Torx® with center pin fasteners and sealed with closed cell gaskets.

END CAPS: Marine grade die-cast aluminum. Two styles available: Reveal and Stepped.

SOCKETS: Shock-resistant sockets with internal locking collar to ensure positive lamp retention.

HARDWARE: Four stainless steel, tamper-resistant Torx® with center pin fasteners secure lens in housing body's lens channel.

ELECTRICAL: LED: Available 3500K, 4000K and 5000K color temperatures, 82 CRI. 120-277VAC, 50/60Hz electrical input with serviceable high power factor electronic, constant-current driver (<20% THD, >0.95 PF). Standard 0-10V dimming with 3-100% range, maximum driver source of 250 µA. LF: Class P ballasts. Fluorescent electronic 120/277/347 and dual voltage ballasts high power factor.

INSTALLATION: Standard two-point (24" housing), four-point (36" and 48" housing) mounting recommended.

WARRANTY: limited ten (10) year warranty for LED Lamps.

LISTINGS: Listed to UL for Damp Location – horizontal and vertical wall mount.



ORDERING INFORMATION (Ex: MLRS5V-48-F-MB-CIA-1-54-RS-1-DV-FS-9500)

Model	Length	End Cap	Finish	Lens	Lamp Qty	Lamp Type	Ballast/Driver Type	Circuit Qty	Voltage	Options	Accessories
MLRS5V											
Length			Lamp Type			Ballast/Driver Type			Options		
24	2'					2' Lengths	DCC Dimming Constant Current (LED Only)			EL** 500 Minimum Lumen Battery Pack (90 Minutes; 32°F Starting Temperature)	
36	3'					14 F14T5	IS Instant Start Electronic <10% THD (T8)			PEL** 1100 Minimum Lumen Battery Pack (90 Minutes; 32°F Starting Temperature)	
48	4'					17 F17T8	RS Rapid Start Electronic <10% THD (T8,T5,T5HO)			CDF Captive Diffuser Fasteners	
						24 F24T5HO (120/277V)	SB Specified Ballast			FS Single Fuse & Holder	
End Caps			3' Lengths			Circuit Quantity			Accessories		
F	Flat					21 F21T5		1 One		PH Phillips Head Fasteners	
R	Rounded					25 F25T8		2† Two			
RV	Reveal					39 F39T5HO (120/277V only)					
SP	Stepped										
Finish			4' Lengths			Voltage					
MW	Matte White					45L35K 45 Watt 3500K LED		120 120 Volts			
MB	Matte Black					45L40K 45 Watt 4000K LED		277 277 Volts			
LG	Light Gray					45L50K 45 Watt 5000K LED		347▲ 347 Volts (Consult Factory)			
CC	Custom Color (Consult Factory)					28 F28T5		DV 120-277 Volts			
Lens			54 F54T5HO								
CIA*	Clear High Impact Acrylic					32 F32T8					
PIA	Pearlescent High Impact Acrylic					54A F54T5HO amalgam					
Lamp Quantity											
1	One										
2	Two										



www.kenall.com | P: 800-4-Kenall | F: 262-891-9701 | 10200 55th Street Kenosha, Wisconsin 53144, USA

This product complies with the Buy American Act: manufactured in the United States with more than 50% of the component cost of US origin. It may be covered by patents found at www.kenall.com/patents. Content of specification sheets is subject to change; please consult www.kenall.com for current product details. ©2019 Kenall Mfg. Co.

A brand of **legrand**

MLRS5V-100918

MILLENIUM STRETCH™

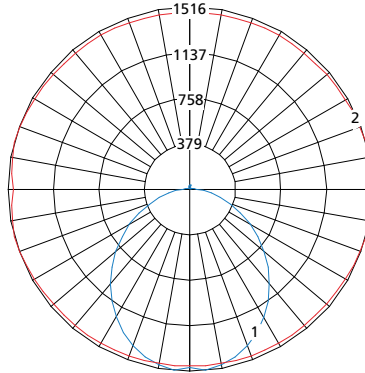
MLR55 SERIES – VANITY

PERFORMANCE

Lamp Type	Initial Delivered Lumens		Input Power (W)	Drive Current (mA)	Estd. L70 LED Life (Hrs)
	@ 25°C	Efficacy (lm/W)			
45L35K	4246	85	50	94	150,000
45L40K	4526	90	50	94	150,000
45L50K	4707	94	50	94	150,000

Displayed information is for selected luminaires only. Additional wattages and color temperatures are also available. Visit www.kenall.com for additional information.

Model: MLR55-48-F-MW-PP-1-45L40K-DCC-1-DV

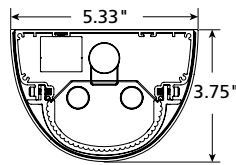


Maximum Candela = 1241 Located At Horizontal Angle = 15, Vertical Angle = 5

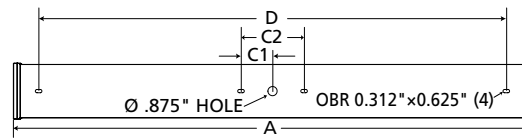
- 1 - Vertical Plane Through Horizontal Angles (15-195) (Through Max. Cd.)
- 2 - Horizontal Cone Through Vertical Angle (5) (Through Max. Cd.)

DIMENSIONAL DATA

CROSS SECTION/DETAILS



MOUNTING HOLES



Nominal Two Foot Fixture Legend

LMP	End Cap	A	B	C1	C2	D
T8	SP	28.13	22.25	N/A	N/A	20.48
T8	RV	27.67	22.25	N/A	N/A	20.48
T5	SP	26.55	20.67	N/A	N/A	18.90
T5	RV	26.09	20.67	N/A	N/A	18.90

Nominal Three Foot Fixture Legend

LMP	End Cap	A	B	C1	C2	D
T8	SP	40.13	34.25	3.00	6.00	32.48
T8	RV	39.67	34.25	3.00	6.00	32.48
T5	SP	38.36	32.48	2.95	5.91	30.71
T5	RV	37.90	32.48	2.95	5.91	30.71

Nominal Three Foot Fixture Legend

LMP	End Cap	A	B	C1	C2	D
T8	SP	52.13	46.25	3.00	6.00	44.48
T8	RV	51.67	46.25	3.00	6.00	44.48
T5	SP	50.17	44.29	2.95	5.91	42.52
T5	RV	49.71	44.29	2.95	5.91	42.52



www.kenall.com | P: 800-4-Kenall | F: 262-891-9701 | 10200 55th Street Kenosha, Wisconsin 53144, USA

This product complies with the Buy American Act: manufactured in the United States with more than 50% of the component cost of US origin. It may be covered by patents found at www.kenall.com/patents. Content of specification sheets is subject to change; please consult www.kenall.com for current product details. ©2019 Kenall Mfg. Co.

A brand of **legrand**