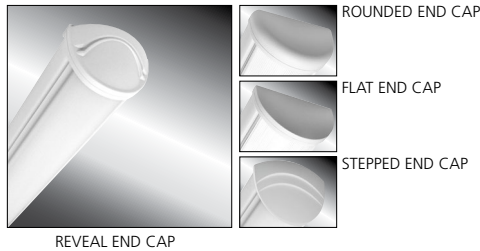


MILLENIUM STRETCH™

MLR55 SERIES – INDIVIDUAL

PRODUCT FEATURES:

- » Surface mount – ceiling or wall; 5"×24", 36", 48", 72" and 96"
- » Extruded aluminum housing with decorative end caps
- » Low-profile – ADA compliant



PROJECT INFORMATION

Job Name _____

Fixture Type _____

Catalog Number _____

Approved by _____

SPECIFICATIONS

HOUSING: Marine grade aluminum. Extruded body with die-cast end caps. Housing, with end caps, post assembly TGIC polyester powder coat finished – 5-step pre-treatment. See Ordering Information for standard, optional, architectural and custom finishes.

REFLECTOR: Full reflector/wire cover – 92% reflectivity.

LENS: UV-stabilized, high impact extruded clear acrylic. Smooth exterior, linear prismatic interior. Nominal thickness .156". Lens securely positioned in body channels and end caps. Lens locked in place with tamper-resistant stainless steel Torx® with center pin fasteners and sealed with closed cell gaskets.

END CAPS: Marine grade die-cast aluminum. Four styles available: Flat, Rounded, Reveal and Stepped. Conduit and "Wiremold™ ready" knockout visible only from interior of end cap (For Flat and Rounded styles only).

SOCKETS: Shock-resistant sockets with internal locking collar to ensure positive lamp retention.

HARDWARE: Stainless steel, tamper-resistant Torx® with center pin fasteners secure lens in housing body's lens channel (eight on 72" and 96" housings, four on 24", 36" and 48" housings).

ELECTRICAL: LED: Available 3500K, 4000K and 5000K color temperatures, 82 CRI. 120-277VAC, 50/60Hz electrical input with serviceable high power factor electronic, constant-current driver (<20% THD, >0.95 PF). Standard 0-10V dimming with 3-100% range, maximum driver source of 250 µA. LF: Class P ballasts. Fluorescent electronic 120/277/347 and dual voltage ballasts high power factor.

INSTALLATION: Standard two-point (24" housing), four-point (36" and 48" housing) and eight-point (72" and 96" housing) mounting recommended.

WARRANTY: limited ten (10) year warranty for LED Lamps.

LISTINGS: Luminaire is certified to UL Standards by Intertek Testing Laboratory for Damp location – corner, horizontal wall, vertical wall and pendant mount installation. See Options for Wet Location – covered ceiling mount.



ORDERING INFORMATION (Ex: MLR55-48-F-MB-CIA-1-54-RS-1-120-FS)

Model	Length	End Cap	Finish	Lens	Lamp Qty	Lamp Type	Ballast/Driver Type	Circuit Qty	Voltage	Options	Accessories
MLR55											
Length	24 2'										
	36 3'										
	48 4'										
	72 Two 3' (factory connected)										
	96 Two 4' (factory connected)										
End Caps	F Flat										
	R Rounded										
	RV Reveal										
	SP Stepped										
Finish	MW Matte White										
	MB Matte Black										
	LG Light Gray										
	CC Custom Color (Consult Factory)										
Lens	CIA † Clear High Impact Acrylic										
	PIA Pearllescent High Impact Acrylic										
Lamp Quantity (Cross Section)	1 One										
	2 ‡ Two										
Lamp Type	2' Lengths										
	14 F14T5										
	17 F17T8										
	24 F24T5HO (120/277V)										
	3' Lengths										
	21 F21T5										
	25 F25T8										
	39 F39T5HO (120/277V only)										
	4' Lengths										
	45L35K 45 Watt 3500K LED										
	45L40K 45 Watt 4000K LED										
	45L50K 45 Watt 5000K LED										
	28 F28T5										
	32 F32T8										
	54 F54T5HO										
	54A F54T5HO amalgam										
Ballast/Driver Type	DCC Dimming Constant Current (LED Only)										
	IS Instant Start Electronic <10% THD (T8)										
	RS Rapid Start Electronic <10% THD (T8,T5,T5HO)										
	SB Specified Ballast										
Circuit Quantity	1 One										
	2 † Two										
Voltage	120 120 Volts										
	277 277 Volts										
	347 ▲ 347 Volts (Consult Factory)										
	DV 120-277 Volts										
Options	EL ‡ 500 Minimum Lumen Battery Pack (90 Minutes; 32°F Starting Temperature)										
	PEL ‡ 1100 Minimum Lumen Battery Pack (90 Minutes; 32°F Starting Temperature)										
	CDF Captive Diffuser Fasteners										
	FS Single Fuse & Holder										
	PH Phillips Head Fasteners										
	PM § Pendant Mount (Max. 3/8NPT stems by others; damp only)										
	WL Wet Location Rating (covered ceiling only)										
Accessories	CMB § Corner Mount Bracket (n/a with WL option)										
	9500 Torx® Screwdriver										
	D-0552 Torx® Driver Bit (Required for CMB Option)										
	† n/a on 2' fixtures with EL option.										
	▲ 347V n/a with EL or PEL options.										
	▼ 2' Fixtures have minimum 350-450 lumen battery pack. n/a with (2) T5HO lamps.										
	● n/a on 2' fixtures, 3' fixtures with T5 or T8 lamping, or with (2) T5HO lamps.										
	‡ n/a with LED										
	§ PM and CMB not available in conjunction										



www.kenall.com | P: 800-4-Kenall | F: 262-891-9701 | 10200 55th Street Kenosha, Wisconsin 53144, USA

This product complies with the Buy American Act: manufactured in the United States with more than 50% of the component cost of US origin. It may be covered by patents found at www.kenall.com/patents. Content of specification sheets is subject to change; please consult www.kenall.com for current product details. ©2019 Kenall Mfg. Co.

A brand of **legrand**

MILLENIUM STRETCH™

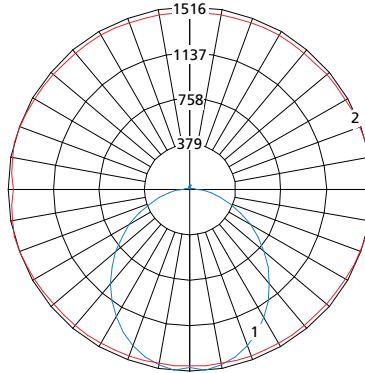
MLR55 SERIES – INDIVIDUAL

PERFORMANCE

Lamp Type	Initial Delivered Lumens		Input Power (W)	Drive Current (mA)	Estd. L70 LED Life (Hrs)
	@ 25°C	Efficacy (lm/W)			
45L35K	4246	85	50	94	150,000
45L40K	4526	90	50	94	150,000
45L50K	4707	94	50	94	150,000

Displayed information is for selected luminaires only. Additional wattages and color temperatures are also available. Visit www.kenall.com for additional information.

Model: MLR55-48-F-MW-PP-1-45L40K-DCC-1-DV

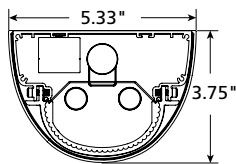


Maximum Candela = 1241 Located At Horizontal Angle = 15, Vertical Angle = 5

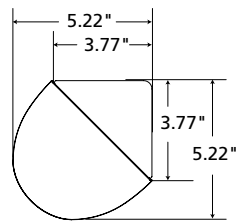
- 1 - Vertical Plane Through Horizontal Angles (15-195) (Through Max. Cd.)
- 2 - Horizontal Cone Through Vertical Angle (5) (Through Max. Cd.)

DIMENSIONAL DATA

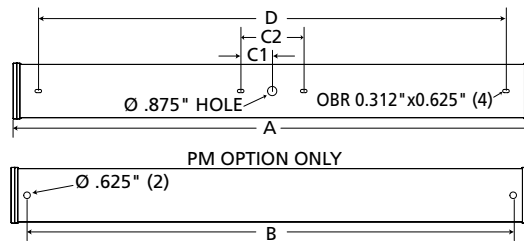
CROSS SECTION/DETAILS



CORNER MOUNT BRACKET



MOUNTING HOLES



Nominal Two Foot Fixture Legend

LMP End Cap	A	B	C1	C2	D
T8 R	26.52	22.25	N/A	N/A	20.48
T8 F	25.31	22.25	N/A	N/A	20.48
T8 SP	28.13	22.25	N/A	N/A	20.48
T8 RV	27.67	22.25	N/A	N/A	20.48
T5 R	24.94	20.67	N/A	N/A	18.90
T5 F	23.72	20.67	N/A	N/A	18.90
T5 SP	26.55	20.67	N/A	N/A	18.90
T5 RV	26.09	20.67	N/A	N/A	18.90

Nominal Three Foot Fixture Legend

LMP End Cap	A	B	C1	C2	D
T8 R	38.52	34.25	3.00	6.00	32.48
T8 F	37.31	34.25	3.00	6.00	32.48
T8 SP	40.13	34.25	3.00	6.00	32.48
T8 RV	39.67	34.25	3.00	6.00	32.48
T5 R	36.75	32.48	2.95	5.91	30.71
T5 F	35.54	32.48	2.95	5.91	30.71
T5 SP	38.36	32.48	2.95	5.91	30.71
T5 RV	37.90	32.48	2.95	5.91	30.71

Nominal Three Foot Fixture Legend

LMP End Cap	A	B	C1	C2	D
T8 R	50.52	46.25	3.00	6.00	44.48
T8 F	49.31	46.25	3.00	6.00	44.48
T8 SP	52.13	46.25	3.00	6.00	44.48
T8 RV	51.67	46.25	3.00	6.00	44.48
T5 R	48.56	44.29	2.95	5.91	42.52
T5 F	47.35	44.29	2.95	5.91	42.52
T5 SP	50.17	44.29	2.95	5.91	42.52
T5 RV	49.71	44.29	2.95	5.91	42.52



www.kenall.com | P: 800-4-Kenall | F: 262-891-9701 | 10200 55th Street Kenosha, Wisconsin 53144, USA

This product complies with the Buy American Act: manufactured in the United States with more than 50% of the component cost of US origin. It may be covered by patents found at www.kenall.com/patents. Content of specification sheets is subject to change; please consult www.kenall.com for current product details. ©2019 Kenall Mfg. Co.

A brand of **legrand**