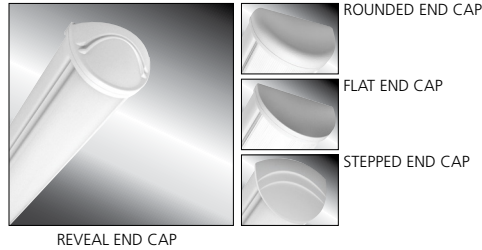


# MILLENIUM STRETCH™

## MLHA5 SERIES – CONTINUOUS ROW

### PRODUCT FEATURES:

- » Surface mount – ceiling or wall; 5"×48"
- » Extruded aluminum housing with decorative end caps
- » Low-profile –ADA compliant
- » Peace of Mind Guarantee® against breakage



PROJECT INFORMATION	
Job Name	_____
Fixture Type	_____
Catalog Number	_____
Approved by	_____

### SPECIFICATIONS

**HOUSING:** Marine grade aluminum. Extruded body with die-cast end caps. Housing, with end caps, post assembly TGIC polyester powder coat finished – 5-step pre-treatment. See Ordering Information for standard, optional, architectural and custom finishes. Each linear run of luminaires consists of one Beginning of Run Luminaire (B), one or multiple Middle Luminaire(s) (M), and one End of Run Luminaire (E). Specify and/or order systems per linear run (i.e. (1)B48, (5)M48, (1)E48). NOTE: Contact factory for custom lengths.

**REFLECTOR:** Full reflector/wire cover – 92% reflectivity.

**LENS:** UV-stabilized, high impact extruded pearlescent polycarbonate. Smooth exterior, linear prismatic interior. Nominal thickness .156". Lens securely positioned in body channels and end caps. Lens locked in place with tamper-resistant stainless steel Torx® with center pin fasteners and sealed with closed cell gaskets.

**END CAPS/JOINER BANDS:** Marine grade die-cast aluminum. Four end cap styles available: Flat, Rounded, Reveal and Stepped. Conduit/Wiremold™ knockout visible only from interior of end cap (for Flat and Rounded styles only).

**HARDWARE:** Four stainless steel, tamper-resistant Torx® with center pin fasteners secure lens in housing body's lens channel.

**ELECTRICAL:** Available 3500K, 4000K and 5000K color temperatures, 82 CRI. 120-277VAC and 347VAC, 50/60Hz electrical input with serviceable high power factor electronic, constant-current driver (<20% THD, >0.95 PF). Standard 0-10V dimming with 1-100% range and dim-to-dark capabilities; maximum driver source of 165µA. Consult factory for fluorescent options.

**INSTALLATION:** Standard four-point mounting per fixture required for Peace of Mind Guarantee®.

**PHOTOMETRICS:** Photometry tested to the IESNA LM-79-08 standard by an ILAC/ISO17025 accredited laboratory. For additional photometric data, please go to [www.kenall.com](http://www.kenall.com).

**WARRANTY:** limited ten (10) year LED warranty. Peace of Mind Guarantee against breakage.

**LISTINGS:** Luminaire is certified to UL standards by Intertek Testing Laboratories for non-IC and Wet Location installations. IP64 rating per IEC60598 – ceiling mount. Corner, horizontal wall, vertical wall and pendant mount installation – damp location only. ADA compliant.



### ORDERING INFORMATION (Ex: MLHA55-B48-2/M48-E48-R-MW-PP-45L40K-DCC-120-FS)

Model	Begin. Hsg.	Mid. Hsg.	End. Hsg.	End Cap	Finish	Lens	Lamp Type	Driver	Voltage	Options	
<b>MLHA55</b>	<b>B48</b>	<b>/M48</b>	<b>E48</b>								
<b>Beginning of Run Housing Style</b>				<b>Finish</b>			<b>Driver Type</b>				
<b>B48</b>	Nominal 48" housing			<b>MW</b>	Matte White	<b>DCC</b> Dimming Constant Current					
<b>Middle Fixture(s) Housing Style</b>				<b>Lens</b>			<b>Voltage</b>				
(replace "x" with qty)				<b>MB</b>	Matte Black	<b>120</b> 120 Volts					
<b>(x)/M48</b> Nominal 48" housing(s)				<b>LG</b>	Light Gray	<b>277</b> 277 Volts					
<b>Ending of Run Housing Style</b>				<b>CC</b>	Custom Color (Consult Factory)	<b>347</b> 347 Volts					
<b>E48</b>	Nominal 48" housing			<b>PP</b>	Pearlescent Polycarbonate	<b>DV</b> 120-277 Volts					
<b>End Caps</b>				<b>Lamp Type</b>			<b>Options</b>				
<b>R</b>	Rounded			<b>45L35K</b>	45 Watt 3500K LED	<b>LEL</b> Integral 8.4W Emergency Battery Backup (0°C minimum operating temperature, n/a with 347V)					
<b>F</b>	Flat			<b>45L40K</b>	45 Watt 4000K LED	<b>CDF</b> Captive Diffuser Fasteners					
<b>RV</b>	Reveal			<b>45L50K</b>	45 Watt 5000K LED	<b>DL</b> Damp Location (Interior use NO gasketing)					
<b>SP</b>	Stepped						<b>FS</b> Single Fuse & Holder				
							<b>NAT</b> Natatorium Environment Option				
							<b>PH</b> Phillips Head Fasteners				
							<b>PM§</b> Pendant Mount (Max. 3/8NPT stems by others; damp only)				
							<b>Accessories</b>				
							<b>CMB§</b> Corner Mount Bracket (Must be ordered with DL Option)				
							<b>9500</b> Torx® Screwdriver				
							<b>D-0552</b> Torx® Driver Bit (Required for CMB Option)				

§ PM and CMB not available in conjunction



www.kenall.com | P: 800-4-Kenall | F: 262-891-9701 | 10200 55th Street Kenosha, Wisconsin 53144, USA

This product complies with the Buy American Act: manufactured in the United States with more than 50% of the component cost of US origin. It may be covered by patents found at [www.kenall.com/patents](http://www.kenall.com/patents). Content of specification sheets is subject to change; please consult [www.kenall.com](http://www.kenall.com) for current product details. ©2019 Kenall Mfg. Co.

A brand of **legrand**

# MILLENNIUM STRETCH™

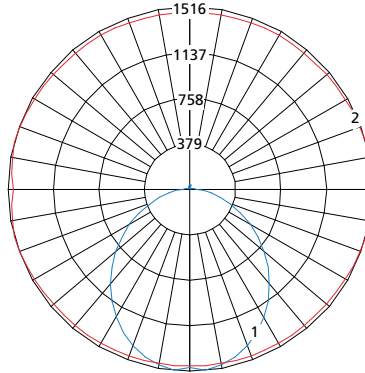
## MLHA5 SERIES – CONTINUOUS ROW

### PERFORMANCE

Lamp Type	Initial Delivered Lumens		Input Power (W)	Drive Current (mA)	Estd. L70 LED Life (Hrs)
	@ 25°C	Efficacy (lm/W)			
45L35K	4,748	97	49	100	150,000
45L40K	5,062	103	49	100	150,000
45L50K	5,062	103	49	100	150,000

Displayed information is for selected luminaires only. Additional wattages and color temperatures are also available. Visit [www.kenall.com](http://www.kenall.com) for additional information.

Model: MLHA5-48-F-MW-PP-1-45L40K-DCC-1-DV

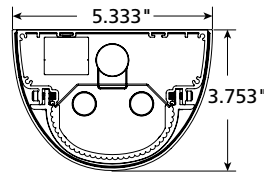


Maximum Candela = 1516 Located At Horizontal Angle = 15, Vertical Angle = 5

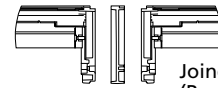
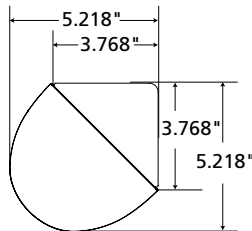
- 1 - Vertical Plane Through Horizontal Angles (15-195) (Through Max. Cd.)
- 2 - Horizontal Cone Through Vertical Angle (5) (Through Max. Cd.)

### DIMENSIONAL DATA

#### CROSS SECTION/DETAILS

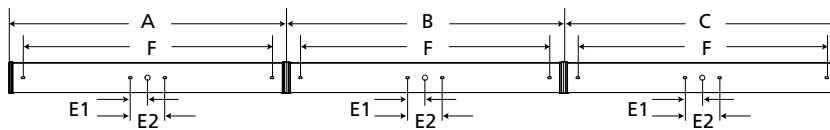


#### CORNER MOUNT BRACKET

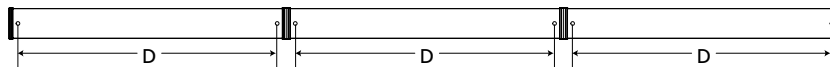


Joiner Band  
(Required for row mounting - supplied)

#### SURFACE MOUNTING HOLES



#### PM OPTION



#### Nominal Four Foot Fixture Legend

End Cap	A	B	C	D	E1	E2	F
R	49.930	49.336	49.930	46.250	3.000	6.000	44.480
F	49.322	49.336	49.322	46.250	3.000	6.000	44.480
SP	50.734	49.336	50.734	46.250	3.000	6.000	44.480
RV	50.505	49.336	50.505	46.250	3.000	6.000	44.480



[www.kenall.com](http://www.kenall.com) | P: 800-4-Kenall | F: 262-891-9701 | 10200 55th Street Kenosha, Wisconsin 53144, USA

A brand of **legrand**

This product complies with the Buy American Act: manufactured in the United States with more than 50% of the component cost of US origin. It may be covered by patents found at [www.kenall.com/patents](http://www.kenall.com/patents). Content of specification sheets is subject to change; please consult [www.kenall.com](http://www.kenall.com) for current product details. ©2019 Kenall Mfg. Co.