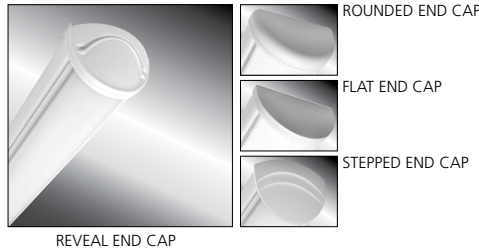


MILLENNIUM STRETCH™

MLH45 SERIES – INDIVIDUAL

Product Features:

- » Surface mount – ceiling, wall; 5"×24", 36", 48", 72" and 96"
- » Extruded aluminum housing with decorative end caps
- » Low-profile –ADA compliant
- » Peace of Mind Guarantee® against breakage



PROJECT INFORMATION

Job Name _____

Fixture Type _____

Catalog Number _____

Approved by _____

SPECIFICATIONS:

HOUSING: Marine grade aluminum. Extruded body with die-cast end caps. Housing, with end caps, post assembly TGIC polyester powder coat finished – 5-step pre-treatment. See Ordering Information for standard, optional and custom finishes.

REFLECTOR: Full reflector/wire cover – 92% reflectivity.

LENS: UV-stabilized, high impact extruded clear or pearlescent polycarbonate. Smooth exterior, linear prismatic interior. Nominal thickness .156". Lens securely positioned in body channels and caps. Lens locked in place with tamper-resistant stainless steel Torx® with center pin fasteners and sealed with closed cell gaskets.

END CAPS: Marine grade die-cast aluminum. Four styles available: Flat, Rounded, Reveal and Stepped. Conduit and "Wiremold™ ready" knockout visible only from interior of end cap (For Flat and Rounded styles only).

SOCKETS: Shock-resistant sockets with internal locking collar to ensure positive lamp retention.

HARDWARE: Stainless steel, tamper-resistant Torx® with center pin fasteners secure lens in housing body's lens channel (eight on 72" and 96" housings, four on 24", 36" and 48" housings).

ELECTRICAL: **LED:** Available 3500K, 4000K and 5000K color temperatures, 82 CRI. 120-277VAC and 347VAC, 50/60Hz electrical input with serviceable high power factor electronic, constant-current driver (<20% THD, >0.95 PF). Standard 0-10V dimming with 1-100% range and dim-to-dark capabilities; maximum driver source of 165µA. Optional embedded microwave motion sensor (MS) has factory default settings of 20 minute time out, dims down to 30%. **LE:** Class P ballasts. Fluorescent electronic 120/277/347 and dual voltage ballasts high power factor.

TEKLINK™ TL50: An independent lighting control system embedded in the luminaire, featuring its own occupancy sensor, daylight harvesting and adjustable time-out/dimming settings.

TEKLINK™ TL100: Centralized, wired zonal occupancy and closed-loop daylight harvesting control system. TL100 controllers are standalone devices and ordered separately for luminaire. [Click here for specifications.](#)

INSTALLATION: Standard two-point (24" housing), four-point (36" and 48" housing) and eight-point (72" and 96" housing) mounting required for Peace of Mind Guarantee®. LED product ambient temperature is -30°C to 40°C, unless otherwise noted.

PHOTOMETRICS: Photometry tested to the IESNA LM-79-08 standard by an ILAC/ISO17025 accredited laboratory. For additional photometric data, please go to www.kenall.com.

WARRANTY: Limited ten (10) year warranty for LED Lamps.

LISTINGS: Luminaire is certified to UL Standards by Intertek Testing Laboratory for Wet Location – covered ceiling mount. Corner, horizontal wall, vertical wall and pendant mount installation – Damp Location only. ETL certified IP64 in compliance with IEC 60598 – ceiling mount. ADA compliant.



In Stock SKU
MLH45-48-F-MW-PP-45L40K-DCC-1-DV
MLH45-48-R-MW-PP-45L40K-DCC-1-DV

ORDERING INFORMATION (Ex: MLH45-48-F-MB-PP-45L40K-DCC-DV-FS)

Model	Length	End Cap	Finish	Lens	Lamp Qty	Lamp Type	Ballast/Driver	Circuit Qty	Voltage	Options	Accessories	TekLink	Controls Kit
MLH45													
Length		Lamp Type		Circuit Quantity‡		Accessories							
24	2'	2' Lengths		1	One	CMB§ Corner Mount Bracket							
36	3'	25L35K 25 Watt 3500K LED		2†	Two	(Must be ordered with DL Option)							
48	4'	25L40K 25 Watt 4000K LED		Voltage		9500 Torx® Screwdriver							
72	Two 3' (factory connected)	25L50K 25 Watt 5000K LED		120	120 Volts	D-0552 Torx® Driver Bit							
96	Two 4' (factory connected)	14 F14T5		277	277 Volts	(Required for CMB Option)							
End Caps		17 F17T8		347* 347 Volts		TekLink							
F	Flat	24 F24T5HO (120/277V only)		DV 120-277 Volts		TL50▲ TL50 Control System							
R	Rounded	3' Lengths		Options		(Click here for specifications)							
RV	Reveal	21 F21T5		EL*‡ 500 Minimum Lumen Battery Pack (4' only)		TL100 TL100 Control System							
SP	Stepped	25 F25T8		(90 Minutes; 32°F Starting Temperature)		(Click here for specifications)							
Finish		39 F39T5HO (120/277V only)		PEL*‡ 1100 Minimum Lumen Battery Pack		Please consult Kenall Applications when ordering controls. Mounting heights above 14' may require alternate sensing technology.							
LG	Light Gray	4' Lengths		LEL Integral 8.4W Emergency Battery Backup		Controls Kit							
MB	Matte Black	45L35K 45 Watt 3500K LED		(4' length only, 0°C minimum operating temperature, n/a with 347V)		< > Factory Assigned Internal Code							
MW	Matte White	45L40K 45 Watt 4000K LED		CDF Captive Diffuser Fasteners		† n/a on 2' fixtures with EL option.							
CC	Custom Color (Consult Factory)	45L50K 45 Watt 5000K LED		DL Damp Location		▼ 347V n/a with EL or PEL options.							
Lens		28 F28T5		FS Single Fuse & Holder		■ 2' Fixtures have minimum 350-450 lumen battery pack. n/a with (2) T5HO lamps.							
CP‡	Clear Polycarbonate	32 F32T8		NAT Natatorium Environment Option		● n/a on 2' fixtures, 3' fixtures with T5 or T8 lamping, or with (2) T5HO lamps.							
PP	Pearlescent Polycarbonate	54 F54T5HO		PH Phillips Head Fasteners		± n/a with LED							
Lamp Quantity (Cross Section)‡		54A F54T5HO amalgam		PM§ Pendant Mount (Max. 3/8NPT stems by others; damp only)		§ PM and CMB not available in conjunction							
1	One	Ballast/Driver Type		MS Motion Sensor (2' and 4' LED only) (n/a with 347 Voltage Option)		▲ LED only. N/A with with PM or CMB options. N/A with 72" or 96" length.							
2	Two	DCC Dimming Constant Current (LED Only)											
		IS Instant Start Electronic <10% THD (T8)											
		RS Rapid Start Electronic <10% THD (T8, T5, T5HO)											
		SB Specified Ballast											



www.kenall.com | P: 800-4-Kenall | F: 262-891-9701 | 10200 55th Street Kenosha, Wisconsin 53144, USA

A brand of **legrand**

This product complies with the Buy American Act: manufactured in the United States with more than 50% of the component cost of US origin. It may be covered by patents found at www.kenall.com/patents. Content of specification sheets is subject to change; please consult www.kenall.com for current product details. ©2019 Kenall Mfg. Co.

MILLENNIUM STRETCH™

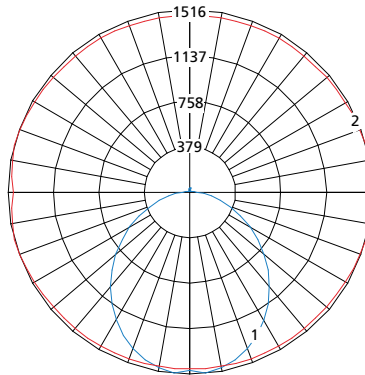
MLHA5 SERIES – INDIVIDUAL

PERFORMANCE

Length	Lamp Type	Initial Delivered Lumens			Drive Current (mA)	Estd. L70 LED Life (Hrs)
		@ 25°C	Efficacy (lm/W)	Input Power (W)		
2'	25L35K	2,374	95	25	100	150,000
	25L40K	2,531	101	25	100	150,000
	25L50K	2,531	101	25	100	150,000
4'	45L35K	4,748	97	49	100	150,000
	45L40K	5,062	103	49	100	150,000
	45L50K	5,062	103	49	100	150,000

Information above is valid for the recommended Type PP lens type and is subject to change without notice. Visit www.kenall.com for IES files and additional information.

Model: MLHA5-48-F-MW-PP-45L40K-DCC-DV

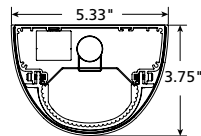


Maximum Candela = 1516 Located At Horizontal Angle = 15, Vertical Angle = 5

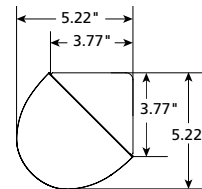
- 1 - Vertical Plane Through Horizontal Angles (15-195) (Through Max. Cd.)
- 2 - Horizontal Cone Through Vertical Angle (5) (Through Max. Cd.)

DIMENSIONAL DATA

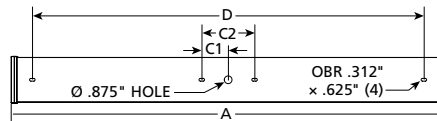
CROSS SECTION/DETAILS



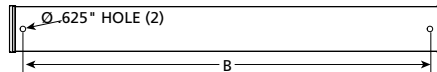
CORNER MOUNT BRACKET



SURFACE MOUNTING HOLES



PM OPTION



Nominal Two Foot Fixture Legend

LMP End Cap	A	B	C1	C2	D
T8/LED R	26.524	22.250	N/A	N/A	20.480
T8/LED F	25.308	22.250	N/A	N/A	20.480
T8/LED SP	28.131	22.250	N/A	N/A	20.480
T8/LED RV	27.674	22.250	N/A	N/A	20.480
T5 R	24.940	20.666	N/A	N/A	18.896
T5 F	23.724	20.666	N/A	N/A	18.896
T5 SP	26.547	20.666	N/A	N/A	18.896
T5 RV	26.090	20.666	N/A	N/A	18.896

Nominal Three Foot Fixture Legend

LMP End Cap	A	B	C1	C2	D
T8/LED R	38.524	34.250	3.000	6.000	32.480
T8/LED F	37.308	34.250	3.000	6.000	32.480
T8/LED SP	40.131	34.250	3.000	6.000	32.480
T8/LED RV	39.674	34.250	3.000	6.000	32.480
T5 R	36.751	32.478	2.953	5.906	30.708
T5 F	35.535	32.478	2.953	5.906	30.708
T5 SP	38.358	32.478	2.953	5.906	30.708
T5 RV	37.901	32.478	2.953	5.906	30.708

Nominal Four Foot Fixture Legend

LMP End Cap	A	B	C1	C2	D
T8/LED R	50.524	46.250	3.000	6.000	44.480
T8/LED F	49.308	46.250	3.000	6.000	44.480
T8/LED SP	52.131	46.250	3.000	6.000	44.480
T8/LED RV	51.674	46.250	3.000	6.000	44.480
T5 R	48.562	44.288	2.953	5.906	42.518
T5 F	47.346	44.288	2.953	5.906	42.518
T5 SP	50.169	44.288	2.953	5.906	42.518
T5 RV	49.712	44.288	2.953	5.906	42.518



www.kenall.com | P: 800-4-Kenall | F: 262-891-9701 | 10200 55th Street Kenosha, Wisconsin 53144, USA

A brand of **legrand**

This product complies with the Buy American Act: manufactured in the United States with more than 50% of the component cost of US origin. It may be covered by patents found at www.kenall.com/patents. Content of specification sheets is subject to change; please consult www.kenall.com for current product details. ©2019 Kenall Mfg. Co.