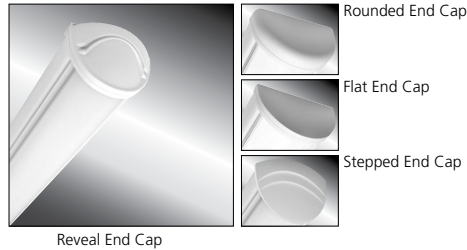


# MILLENIUM STRETCH™

## MLHA5 SERIES using Indigo-Clean Technology

### PRODUCT FEATURES:

- » Provides on-demand environmental disinfection via LED light
- » Single, white disinfection mode
- » Independent laboratory tested to kill harmful bacteria, including Staph\*, such as MRSA\*\*
- » Effective and efficient lighting performance
- » Extruded and die-cast aluminum construction
- » Peace of Mind Guarantee™ against breakage



**PROJECT INFORMATION**

Job Name \_\_\_\_\_

Fixture Type \_\_\_\_\_

Catalog Number \_\_\_\_\_

Approved by \_\_\_\_\_

### SPECIFICATIONS

**HOUSING:** Marine grade aluminum. Extruded body with die-cast end caps. Housing, with end caps, post assembly TGIC polyester powder coat finished – 5-step pre-treatment. See Ordering Information for available finishes.

**OPTIC:** High-impact extruded diffuser. Smooth exterior, linear prismatic interior. Nominal thickness .156". Lens securely positioned in body channels and end caps. Lens locked in place with four (4) tamper-resistant stainless steel Torx® with center pin fasteners and sealed with closed cell gaskets. Full reflector/ wire cover with 92% reflectivity.

**END CAPS:** Marine grade die-cast aluminum. Three styles available: Flat, Rounded and Reveal. Conduit and "Wiremold™ ready" knockouts visible only from interior of end cap (Flat and Rounded styles only).

**ELECTRICAL:** Serviceable mid-power white and 405nm Indigo LED array. Available 3200K, 3700K and 4300K color temperatures with 3-step MacAdam variation allowance. Minimum 82 CRI standard. 120-277VAC and 347VAC electrical input with serviceable high power factor electronic, constant-current drivers (<10% THD, >0.90 PF). Minimum 85% driver efficiency. Standard 0-10V dimming with 1-100% range and dim-to-dark capabilities. 330µA maximum source current. Single, white disinfection mode.

**INSTALLATION:** Standard four-point mounting required for Peace of Mind Guarantee®. Suitable for installation into -30°C to 40°C ambient environments, unless otherwise noted.

**PHOTOMETRICS:** Photometry tested to the IESNA LM-79-08 standard by an ILAC/ISO17025 accredited laboratory. For additional photometric information, go to [www.kenall.com](http://www.kenall.com).

**WARRANTY:** Limited five (5) year LED warranty

**LISTINGS:** Luminaire is certified to UL Standards by Intertek Testing Laboratory for Wet Location – covered ceiling mount. ETL certified IP64 in compliance with IEC 60598 – ceiling mount. Corner, horizontal wall and pendant mount installation – damp location only. ADA compliant. EPA Est. No. 99283-WI-1.

\*per independent lab report #5GS-09516076094. Contact Kenall for a copy of this report.

\*\*Antimicrobial Activity of a Continuous Visible Light Disinfection System by Rutala, et. al, ID Week 2016.



### ORDERING INFORMATION (Ex: MLHA5-48-F-MB-FA-55C37K-DCC-DV-FS-9500)

Model	Length	End Cap	Finish	Lens	Lamp Type	Driver Type	Voltage	Options	Accessories
<b>MLHA5</b>	<b>48</b>			<b>FA</b>		<b>DCC</b>			
<b>Length</b>	<b>48</b> 4'		<b>Finish</b>			<b>Driver Type</b>		<b>Options</b>	
<b>End Caps</b>	<b>F</b> Flat <b>R</b> Rounded <b>RV</b> Reveal <b>SP</b> Stepped		<b>LG</b> Light Gray <b>MB</b> Matte Black <b>MW</b> Matte White <b>CC</b> Custom Color (Consult Factory)	<b>Lens</b> <b>FA</b> Frosted DR Acrylic		<b>DCC</b> 0-10V Dimming Constant Current		<b>LEL†</b> Integral 8.4W Emergency Battery Backup <b>CDF</b> Captive Diffuser Fasteners <b>DL</b> Damp Location <b>FS</b> Single Fuse & Holder <b>PH</b> Phillips Head Fasteners <b>PM‡</b> Pendant Mount (Max. 3/8NPT stems by others; damp only)	
			<b>Lamp Type</b>			<b>Voltage</b>		<b>Accessories</b>	
			<b>55C32K</b> 55 Watt 3200K White & Indigo LED <b>55C37K</b> 55 Watt 3700K White & Indigo LED <b>55C43K</b> 55 Watt 4300K White & Indigo LED			<b>DV</b> 120-277 Volts, 50/60Hz <b>347</b> 347 Volts, 60Hz		<b>CMB‡</b> Corner Mount Bracket (Must be ordered with DL Option) <b>9500</b> Torx® Screwdriver <b>D-0552</b> Torx Driver Bit (Required for CMB Option)	

† 0°C minimum operating temperature, n/a with 347V  
‡ PM and CMB not available in conjunction

**Click HERE for MLHA5-ICT 'Fast Track' Ordering Options**

Ships in 5 days



[www.kenall.com](http://www.kenall.com) | P: 800-4-Kenall | F: 262-891-9701 | 10200 55th Street Kenosha, Wisconsin 53144, USA

This product complies with the Buy American Act: manufactured in the United States with more than 50% of the component cost of US origin. It may be covered by patents found at [www.kenall.com/patents](http://www.kenall.com/patents). Content of specification sheets is subject to change; please consult [www.kenall.com](http://www.kenall.com) for current product details. ©2019 Kenall Mfg. Co.

A brand of **legrand**

MLHA5-ICT-010521

# MILLENIUM STRETCH™

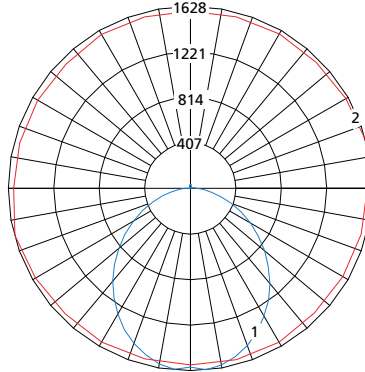
## MLHA5 SERIES – with Indigo-Clean Technology

### PERFORMANCE

Lamp Type	Initial Delivered Lumens		Input Power (W)	Drive Current (mA)	Estd. L70 LED Life (Hrs)
	@ 25°C	Efficacy (lm/W)			
55C32K	5,299	84	63	100	80,000
55C37K	5,436	86	63	100	80,000
55C43K	5,492	87	63	100	80,000

Displayed information above is for FA lens type. Information subject to change without notice. Visit [www.kenall.com](http://www.kenall.com) for IES files and additional information.

Model: MLHA5-48-X-MW-FA-55C37K-DCC-DV

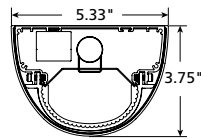


Maximum Candela = 1628 Located At Horizontal Angle = 15, Vertical Angle = 5

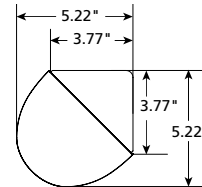
- 1 - Vertical Plane Through Horizontal Angles (15-195) (Through Max. Cd.)
- 2 - Horizontal Cone Through Vertical Angle (5) (Through Max. Cd.)

### DIMENSIONAL DATA

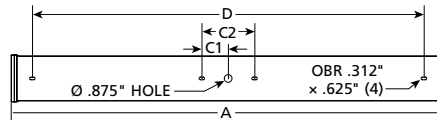
#### CROSS SECTION/DETAILS



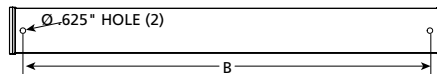
#### CORNER MOUNT BRACKET



#### SURFACE MOUNTING HOLES



#### PM OPTION



Nominal Four Foot Fixture Legend					
End Cap	A	B	C1	C2	D
R	50.52	46.25	3.00	6.00	44.48
F	49.31	46.25	3.00	6.00	44.48
SP	52.13	46.25	3.00	6.00	44.48
RV	51.67	46.25	3.00	6.00	44.48

