

MILLENNIUM STRETCH™

MLHA5 SERIES using Indigo-Clean Technology – FAST TRACK

PRODUCT FEATURES:

- » Fast Track ordering options ship in 5 days
- » Provides on-demand environmental disinfection via LED light
- » Single, white disinfection mode
- » Independent laboratory tested to kill harmful bacteria, including Staph*, such as MRSA**
- » Extruded and die-cast aluminum construction
- » Peace of Mind Guarantee™ against breakage



PROJECT INFORMATION

Job Name _____

Fixture Type _____

Catalog Number _____

Approved by _____

SPECIFICATIONS:

HOUSING: Marine grade aluminum. Extruded body with die-cast end caps. Housing, with end caps, post assembly TGIC polyester powder coat finished – 5-step pre-treatment. See Ordering Information for available finishes.

OPTIC: High-impact extruded diffuser. Smooth exterior, linear prismatic interior. Nominal thickness .156". Lens securely positioned in body channels and end caps. Lens locked in place with four (4) tamper-resistant stainless steel Torx® with center pin fasteners and sealed with closed cell gaskets. Full reflector/wire cover with 92% reflectivity.

END CAPS: Marine grade die-cast aluminum. Conduit and "Wiremold™ ready" knockout visible only from interior of end cap.

ELECTRICAL: Serviceable mid-power white and 405nm Indigo LED array. Available 3700K color temperature with 3-step MacAdam variation allowance. Minimum 82 CRI standard. 120-277VAC electrical input with serviceable high power factor electronic, constant-current drivers (<10% THD, >0.90 PF). Minimum 85% driver efficiency. Standard 0-10V dimming with 1-100% range and dim-to-dark capabilities. 165µA maximum source current. Single, white disinfection mode.

INSTALLATION: Standard four-point mounting required for Peace of Mind Guarantee®. Suitable for installation into -30°C to 40°C ambient environments, unless otherwise noted.

PHOTOMETRICS: Photometry tested to the IESNA LM-79-08 standard by an ILAC/ISO17025 accredited laboratory. For additional photometric data, please go to www.kenall.com.

WARRANTY: Limited five (5) year LED warranty

LISTINGS: Luminaire is certified to UL Standards by Intertek Testing Laboratory for Wet Location – covered ceiling mount. Corner, horizontal wall, vertical wall and pendant mount installation – Damp Location only. ETL certified IP64 in compliance with IEC 60598 – ceiling mount. ADA compliant. EPA Est. No. 99283-WI-1.

*per independent lab report #SGS-09516076094. Contact Kenall for a copy of this report.

**Antimicrobial Activity of a Continuous Visible Light Disinfection System by Rutala, et. al, ID Week 2016.



ORDERING INFORMATION (Ex: MLHA5-48-F-MW-FA-55C37K-DCC-DV)

Model	Length	End Cap	Finish	Lens	Lamp Type	Driver Type	Voltage
MLHA5	48	F	MW	FA	55C37K	DCC	DV
	Length 48 4'		Finish MW Matte White			Driver Type DCC 0-10V Dimming Constant Current	
	End Caps F Flat		Lens FA Frosted DR Acrylic			Voltage DV 120-277 Volts, 50/60Hz	
			Lamp Type 55C37K 55 Watt 3700K White & Indigo LED				

Click [HERE](#) for full range of MLHA5 ordering options



www.kenall.com | P: 800-4-Kenall | F: 262-891-9701 | 10200 55th Street Kenosha, Wisconsin 53144, USA

This product complies with the Buy American Act: manufactured in the United States with more than 50% of the component cost of US origin. It may be covered by patents found at www.kenall.com/patents. Content of specification sheets is subject to change; please consult www.kenall.com for current product details. ©2019 Kenall Mfg. Co.

A brand of legrand

MILLENIUM STRETCH™

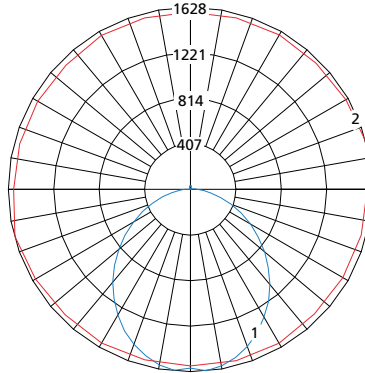
MLHA5 SERIES using Indigo-Clean Technology – FAST TRACK

PERFORMANCE

Lamp Type	Initial Delivered Lumens		Input Power (W)	Drive Current (mA)	Estd. L70 LED Life (Hrs)
	@ 25°C	Efficacy (lm/W)			
55C37K	5,436	86	63	100	80,000

Displayed information above is for FA lens type. Information subject to change without notice. Visit www.kenall.com for IES files and additional information.

Model: MLHA5-48-X-MW-FA-55C37K-DCC-DV

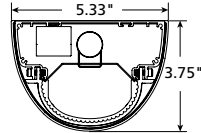


Maximum Candela = 1628 Located At Horizontal Angle = 15, Vertical Angle = 5

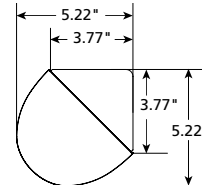
- 1 - Vertical Plane Through Horizontal Angles (15-195) (Through Max. Cd.)
- 2 - Horizontal Cone Through Vertical Angle (5) (Through Max. Cd.)

DIMENSIONAL DATA

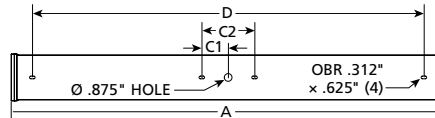
CROSS SECTION/DETAILS



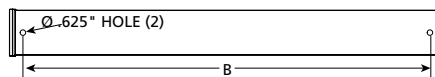
CORNER MOUNT BRACKET



SURFACE MOUNTING HOLES



PM OPTION



Nominal Four Foot Fixture Legend					
End Cap	A	B	C1	C2	D
F	49.31	46.25	3.00	6.00	44.48

