

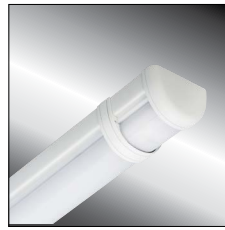
TEKLINK™ TL50 FOR MILLENIUM STRETCH™

Control System Specification & User Guide

MLHA-TL50 SYSTEM

PRODUCT FEATURES:

- » Embedded Microwave occupancy detection
- » Sensor settings configurable via Remote Controller*
- » Adjustable dimmed-state light level
- » Adjustable occupancy time-out delay
- » Daylight Harvesting



PROJECT INFORMATION

Job Name _____

Fixture Type _____

Catalog Number _____

Approved by _____

SPECIFICATIONS:

TEKLINK SENSOR: Embedded microwave occupancy detection and daylight sensing with adjustable dim-level, sensor sensitivity, time-out delay, and turn-off delay settings via remote controller*. Microwave sensing operates at 5.8 GHz (continuous-wave radar) and provides 360° coverage at various mounting heights and coverage areas. Details of sensor functionality and coverage area can be seen in the pages that follow.

HOUSING: Marine grade aluminum. Extruded body with die-cast end caps. Housing, with end caps, post assembly TGIC polyester powder coat finished – 5-step pre-treatment. See Ordering Information for standard, optional, architectural and custom finishes.

INSTALLATION: Control components and sensor housing embedded in Millennium Stretch housing at factory.

WARRANTY: Limited five (5) year warranty.

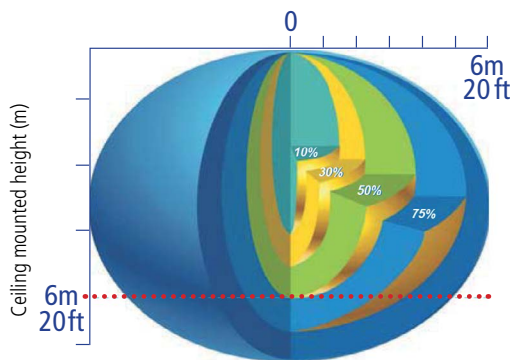
LISTINGS: Luminaire is certified to UL Standards by Intertek Testing Laboratory for Wet Location. UL certified IP64 per IEC 60598.

NOTE: See [MLHA5](#), [MLHA8](#) or [MLHA12](#) spec sheet for TekLink™ TL50 control system ordering information.

*TL50 Remote controller (TL50-RC1) sold separately. Please consult factory.



COVERAGE PATTERN



Ceiling mounted detection pattern

NOTE: Occupancy pattern dimensions are maximums, may vary due to environment

Factory Default

Time Out	Dim%	Daylight	Detection
20 min	30%	Inactive	100%

BASIC OPERATION



Red LED flashes upon settings change.



www.kenall.com | P: 800-4-Kenall | F: 262-891-9701 | 10200 55th Street Kenosha, Wisconsin 53144, USA

This product complies with the Buy American Act: manufactured in the United States with more than 50% of the component cost of US origin. It may be covered by patents found at www.kenall.com/patents. Content of specification sheets is subject to change; please consult www.kenall.com for current product details. ©2019 Kenall Mfg. Co.

A brand of **legrand**

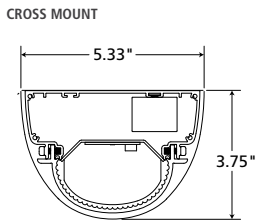
TEKLINK™ TL50 FOR MILLENNIUM STRETCH™

Control System Specification & User Guide

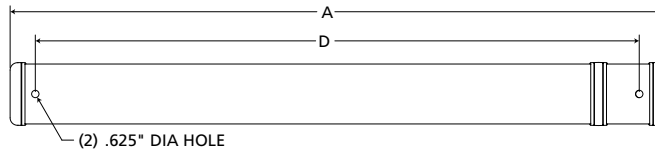
MLHA-TL50 SYSTEM

DIMENSIONAL DATA

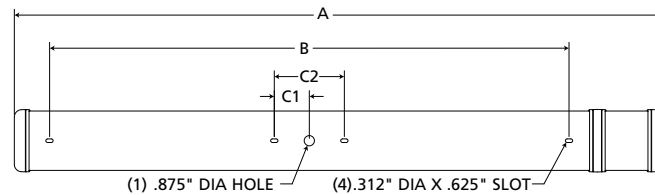
MLHA5



PENDANT MOUNT



SURFACE/WALL MOUNT



Nominal Two Foot Fixture Legend

End Cap	A	B	C1	C2	D
R	32.02	20.48	N/A	N/A	27.75
F	30.81	20.48	N/A	N/A	27.75
SP	33.63	20.48	N/A	N/A	27.75
RV	33.17	20.48	N/A	N/A	27.75

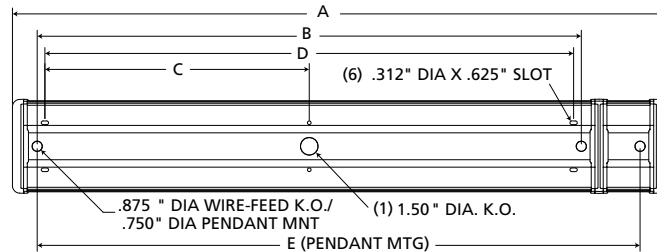
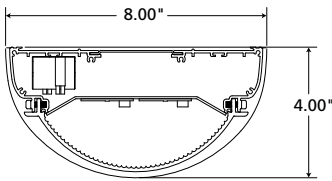
Nominal Three Foot Fixture Legend

End Cap	A	B	C1	C2	D
R	44.02	32.48	3.00	6.00	39.75
F	42.80	32.48	3.00	6.00	39.75
SP	45.63	32.48	3.00	6.00	39.75
RV	45.17	32.48	3.00	6.00	39.75

Nominal Four Foot Fixture Legend

End Cap	A	B	C1	C2	D
R	56.02	44.48	3.00	6.00	51.75
F	54.81	44.48	3.00	6.00	51.75
SP	57.63	44.48	3.00	6.00	51.75
RV	57.17	44.48	3.00	6.00	51.75

MLHA8



Nominal Two Foot Fixture Legend

End Cap	A	B	C	D	E
R	31.52	22.31	N/A	21.00	27.31
F	30.31	22.31	N/A	21.00	27.31
RV	33.63	22.31	N/A	21.00	27.31

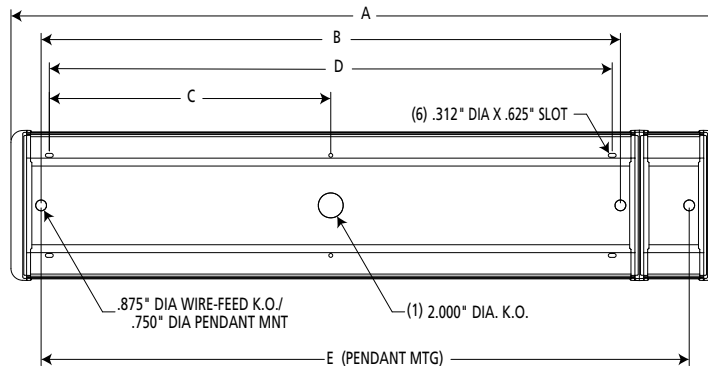
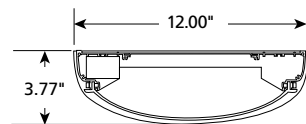
Nominal Three Foot Fixture Legend

End Cap	A	B	C	D	E
R	43.52	34.31	16.50	33.00	39.31
F	42.31	34.31	16.50	33.00	39.31
RV	45.63	34.31	16.50	33.00	39.31

Nominal Four Foot Fixture Legend

End Cap	A	B	C	D	E
R	55.52	46.31	22.50	45.00	51.31
F	54.31	46.31	22.50	45.00	51.31
RV	57.63	46.31	22.50	45.00	51.31

MLHA12



Nominal Two Foot Fixture Legend

End Cap	A	B	C	D	E
R	32.63	22.31	N/A	21.00	27.81
F	30.80	22.31	N/A	21.00	27.81
RV	35.34	22.31	N/A	21.00	27.81

Nominal Three Foot Fixture Legend

End Cap	A	B	C	D	E
R	44.63	34.31	16.50	33.00	39.81
F	42.80	34.31	16.50	33.00	39.81
RV	47.34	34.31	16.50	33.00	39.81

Nominal Four Foot Fixture Legend

End Cap	A	B	C	D	E
R	56.63	46.31	22.50	45.00	51.81
F	54.81	46.31	22.50	45.00	51.81
RV	59.34	46.31	22.50	45.00	51.81



www.kenall.com | P: 800-4-Kenall | F: 262-891-9701 | 10200 55th Street Kenosha, Wisconsin 53144, USA

A brand of **legrand**

This product complies with the Buy American Act: manufactured in the United States with more than 50% of the component cost of US origin. It may be covered by patents found at www.kenall.com/patents. Content of specification sheets is subject to change; please consult www.kenall.com for current product details. ©2019 Kenall Mfg. Co.

TL50 Remote Controller Instructions*

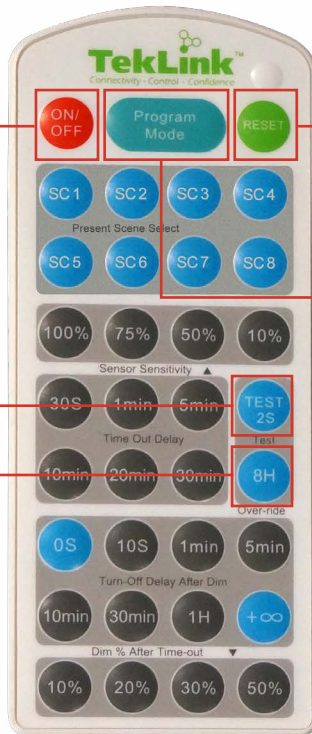
ON/OFF OVER-RIDES

Pressing **ON/OFF** will move the luminaire light output to 100% or 0%, respectively.

TEST 2S puts the system into test mode. In test mode, the Time Out Delay is reduced to 2 seconds.

8H will move the luminaire light output to 100% for 8 consecutive hours

NOTE: Occupancy detection and daylight harvesting are disabled in all Over-ride modes



ESCAPE FUNCTIONS

RESET reverts system back to factory settings listed below:

- Time Out Delay: 20 minutes
- Turn-Off Delay: +∞
- Dim% After Time-out: 30%
- Daylight: Inactive

PROGRAM MODE is used to:

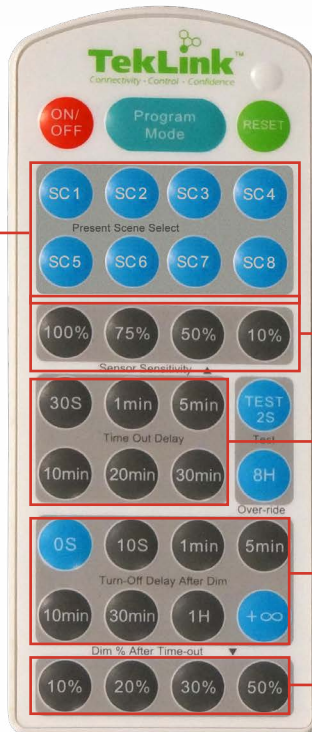
- 1) Exit an Over-Ride function (ON/OFF, TEST 2S, 8H)
- 2) Restore previous settings

AUTO SETTINGS

The TL50 remote controller contains eight available scenes which set the Occupancy Time-out period, Turn-off Delay, Non occupancy Dim %, and Occ Light Level Target with the push of a button.

Below are the pre-set conditions for each button:

BUTTON	OCC TIME-OUT PERIOD	TURN-OFF DELAY	NON-OCC DIM %	OCC LIGHT LEVEL TARGET LIGHT
SC1	20 min	∞	10%	5 ft-c
SC2	20 min	∞	30%	5 ft-c
SC3	10 min	∞	10%	10 ft-c
SC4	10 min	∞	30%	10 ft-c
SC5	5 min	∞	10%	5 ft-c
SC6	5 min	∞	30%	5 ft-c
SC7	5 min	∞	50%	5 ft-c
SC8	5 min	∞	50%	10 ft-c



MANUAL SETTINGS

Sets sensor sensitivity to occupancy detection

Sets the time period from when the system will go from the Occupancy light level to the Non-Occupancy Dim %

Sets the time period from when the system will go from the Non-Occupancy Dim % to OFF.

Non-Occupancy Dim Level %

*TL50 remote controller (TL50-RC1) sold separately. Requires two AAA batteries (not included).

