

MEDMASTER™

Exam Luminaires for Patient Rooms

MEC SERIES

PRODUCT FEATURES:

- » Ceiling mount – 8"×48", 8"×60", 12"×48"
- » Exam light with asymmetric optics for shadow-free illumination
- » Ingress Barrier Door provides consistent surface for cleanability



PROJECT INFORMATION

Job Name _____

Fixture Type _____

Catalog Number _____

Approved by _____

SPECIFICATIONS:

HOUSING: FLANGE AND GRID: 20-gauge CRS one-piece seam welded construction. SURFACE: 18-gauge CRS one-piece seam welded construction. Housing flange (Flange/Grid): 18-gauge CRS, standard 4-piece construction, spot welded to housing. White TGIC polyester powder coat – 5-stage pre-treatment. Salt spray test: 1,000 hours; reflectance: 92%.

DOORFRAME: Heavy duty extruded aluminum with clear satin anodized finish. Doorframe supported to housing with aircraft cables (IB-AC) to provide NSF2 listing, or an optional continuous hinged doorframe (IB-HD). Select in ordering options below. Phillips head stainless steel fasteners secure door to housing – 8 on IB-AC option; 3 on IB-HD option.

GASKET: Closed cell silicone gasket seals door to housing.

LAMP SHIELDING: Perforated steel (white TGIC polyester powder coat finish) with pearlescent diffuser.

FASTENERS: Torx® head with center pin hardened security screws. Fully recessed.

ELECTRICAL: Fluorescent electronic 120-277V ballasts high power factor (<10% THD). See Ordering Information for optional equipment. Lamps by others.

INSTALLATION: SURFACE MOUNT: Four .312" diameter holes. GRID MOUNT: Designed for 1" grid. Includes hardware to secure hanger wire. FLANGE MOUNT: – Yoke brackets: Fixture mounting hardware included. Install Frame (Accessory): Positively locates yoke brackets within ceiling opening; assures alignment of fixture. No measuring for yoke required; no drywall backing required (included with frame assembly).

WARRANTY: Limited one (1) year Kenall fluorescent warranty.

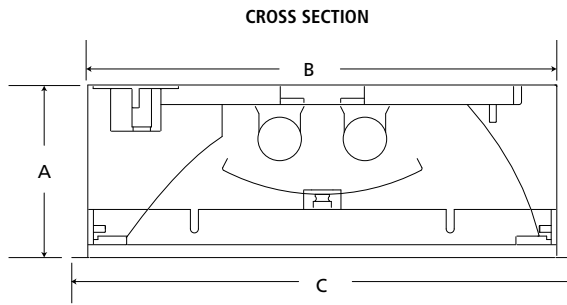
LISTINGS: UL and CUL Listed for Wet Location and UL certified IP65 per IEC 60598. NSF2 Splash/Non-Food Zone (IB-AC only).



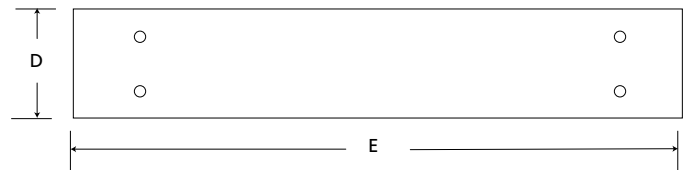
ORDERING INFORMATION (Ex: MEC12-48-S-2-32-IS-120-IB-AC)

Model	Length	Mounting Options	Lamp Qty	Lamp Type	Ballast Type	Voltage	Doorframe	Options	Accessory
IB-									
Model			Lamp Quantity		Ballast Type			Options	
MEC8 8"			1 One Lamp		IS Instant Start Electronic, 10% THD (T8)			AMF Antimicrobial Finish on exposed surfaces	
MEC12 12"			2 Two Lamps		RS Rapid Start Electronic, 10% THD (T8,T5,T5H0)			FS Fuse & Holder	
Nominal Length			Lamp Type		Voltage			RF† Radio Frequency Filter	
48 4'			4' Lengths		120 120 Volts			LVC† Low Voltage Controller	(See Application Guide or consult factory for switching options)
60 5' (MEC8 only)			28† F28T5		277 277 Volts			Accessory	
			32 F32T8 (MEC12 only)		347 347 Volts			IF Install Frame (Flange only)	
Mounting Options			54 F54T5H0		Doorframe				
S Surface			5' Lengths (MEC8 only)		AC Ingress Barrier w/Aircraft Cables (Std.)				
G Grid (1")			35† F35T5		HD Ingress Barrier w/Continuous Piano Hinge (not NSF2 listed)				
F Flange			80 F80T5H0						†n/a with 347V

DIMENSIONAL DATA



RECOMMENDED CEILING CUTOUT/ SURFACE MOUNTING HOLES



DIMENSIONAL DATA (IN INCHES)

	A	B	C	D	E
MEC848 (T5)	3.25	8.00×47.00	8.75×47.75	8.25**	47.25
MEC860 (T5)	3.25	8.00×59.00	8.75×59.75	8.25**	59.25
MEC12 (T5)	4.25	11.00×47.00	11.75×47.75	11.25**	47.25
MEC12 (T8)	4.25	11.00×48.75	11.75×49.50	11.25**	49.00

**Add .25" to each cut-out dimension when Install Frame (IF) Accessory is specified



www.kenall.com | P: 800-4-Kenall | F: 262-891-9701 | 10200 55th Street Kenosha, Wisconsin 53144, USA

A brand of Legrand

This product complies with the Buy American Act: manufactured in the United States with more than 50% of the component cost of US origin. It may be covered by patents found at www.kenall.com/patents. Content of specification sheets is subject to change; please consult www.kenall.com for current product details. ©2019 Kenall Mfg. Co.