

MEDMASTER AURACYL™ SCNCE

Patient Room Luminaires

MAS SERIES

PRODUCT FEATURES:

- » Wall mount – 8"×13"
- » Sealed marine-grade extruded aluminum
- » Sealed backlighting creates a pleasing visual accent and NSF2 listing
- » Standard antimicrobial finish for cleanability



PROJECT INFORMATION

Job Name _____

Fixture Type _____

Catalog Number _____

Approved by _____

SPECIFICATIONS

HOUSING: Marine grade extruded aluminum. Marine grade die-cast aluminum end caps. TGIC polyester powder coat – 5-stage pre-treatment; Salt spray test: 1,000 hours. Antimicrobial finish standard on exposed painted aluminum surfaces of installed luminaire.

REFLECTOR: Die-formed marine grade aluminum. Full reflector/wire cover – 92% reflectivity.

DECORATIVE OUTER LENS: Acrylic translucent white lens standard. Nominal thickness .125". Optional decorative Lumicor® resins – see Ordering Information.

INNER LENS: UV-stabilized, high impact resistant, extruded 100% DR acrylic frost lens. Nominal thickness .100". Lens secured in place by lens frame.

HARDWARE: One stainless steel Phillips head fastener standard. Four stainless steel Phillips head fasteners with IP64 option. Internal brackets and fasteners are non-corrosive.

ELECTRICAL: Available 3500K, 4000K and 5000K color temperatures, 82 CRI. 120-277VAC, 50/60Hz electrical input with serviceable high power factor electronic, constant-current driver (<20% THD, >0.95 PF). Standard 0-10V dimming with 10-100% range, maximum driver source of 250 µA.

INSTALLATION: Standard four-point mounting required.

PHOTOMETRICS: Photometry tested to the IESNA LM-79-08 standard by an ILAC/ISO17025 accredited laboratory. For additional photometric information, go to www.kenall.com.

WARRANTY: limited five (5) year warranty.

LISTINGS: UL and CUL listed for Damp Location – covered ceiling and wall mount. NSF2 Splash/Non-Food Zone. ADA Compliant. Optional IP64 certified per IEC 60598. Kenall certifies product by both Underwriters and Intertek Testing Laboratories.



ORDERING INFORMATION (Ex: MAS813-PAN-AS-CS-1-12L40K-DCC)

Model	Frame Type	Outer Lens	Finish	Lamp Qty	Lamp & Driver Type	Options
MAS813	PAN			1		
Frame Type			Finish		Lamp & Driver Type	
PAN Pane			MB Matte Black (Antimicrobial finish)		12L35K-DCC-DV 12 Watt 3500K LED	
Decorative Outer Lens			MW Matte White (Antimicrobial finish)		12L40K-DCC-DV 12 Watt 4000K LED	
AS Frosted Acrylic			WS Warm Satin Painted Anodized		12L50K-DCC-DV 12 Watt 5000K LED	
CAP Clear Acrylic w/Inner Perforation painted to match housing/frame finish			CS Cool Satin Painted Anodized		Options	
NL* Acrylic Natural Leaf			BR Bronze		IP64 IP64 certified to IEC 60598	
SS* Acrylic Silver Spun			DB Dark Bronze		FS Single Fuse & Holder	
OL* Acrylic Oyster Linen			BE Beige			
PL** PETG Paper Leaf			CC Custom Color (Consult factory)			
Lamp Quantity				1 One Lamp		

*Lumicor® Lumiclear™ Acrylic Resin

**Lumicor® Lumiform™ PETG Resin

Lumicor® is a registered trademark of Lumicor, Inc., the leader in encapsulated resin technology. All Rights Reserved.

DECORATIVE OUTER LENS



AS Frosted Acrylic
CAP Clear Acrylic w/Perforation
NL Natural Leaf*
SS Silver Spun*
OL Oyster Linen*
PL Paper Leaf**

FRAME FINISH



MB Matte Black
MW Matte White
WS Warm Satin
CS Cool Satin
BR Bronze
DB Dark Bronze
BE Beige



www.kenall.com | P: 800-4-Kenall | F: 262-891-9701 | 10200 55th Street Kenosha, Wisconsin 53144, USA

A brand of **legrand**

This product complies with the Buy American Act: manufactured in the United States with more than 50% of the component cost of US origin. It may be covered by patents found at www.kenall.com/patents. Content of specification sheets is subject to change; please consult www.kenall.com for current product details. ©2019 Kenall Mfg. Co.

MEDMASTER AURACYL™ SCNCE

For additional photometry, go to www.kenall.com

Patient Room Luminaires

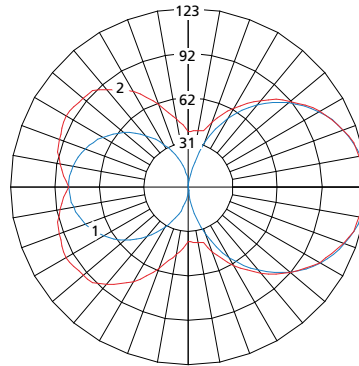
MAS SERIES

PERFORMANCE

Lamp Type	Initial Delivered Lumens		Input Power (W)	Drive Current (mA)	Estd. L70 LED Life (Hrs)
	@ 25°C (lm)	Efficacy (lm/W)			
12L35K	698	50	14	94	80,000
12L40K	744	53	14	94	80,000
12L50K	774	55	14	94	80,000

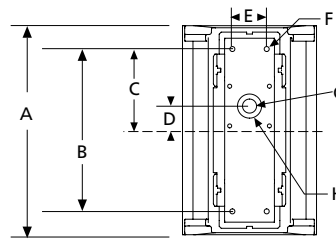
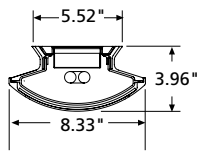
Displayed information above is for PP Lens type only. Info subject to change. Visit www.kenall.com for IES files and additional information.

Model: MAS813-AS-MW-12L40K-DV



Maximum Candela = 123 Located At Horizontal Angle = 0, Vertical Angle = 90
 1 - Vertical Plane Through Horizontal Angles (0-180) (Through Max. Cd.)
 2 - Horizontal Cone Through Vertical Angle (90) (Through Max. Cd.)

DIMENSIONAL DATA



DIMENSIONAL DATA (IN INCHES) – CROSS VIEW

A	B	C	D	E	F	G	H
13.00	10.10	5.05	n/a	2.14	(4) .312D	.875D	1.50D



www.kenall.com | P: 800-4-Kenall | F: 262-891-9701 | 10200 55th Street Kenosha, Wisconsin 53144, USA

A brand of **legrand**

This product complies with the Buy American Act: manufactured in the United States with more than 50% of the component cost of US origin. It may be covered by patents found at www.kenall.com/patents. Content of specification sheets is subject to change; please consult www.kenall.com for current product details. ©2019 Kenall Mfg. Co.