

MEDMASTER™

Patient Room Luminaires

MAC SERIES using Indigo-Clean Technology

PRODUCT FEATURES:

- » Provides environmental disinfection and effective, efficient lighting performance via visible LED light
- » Dual-Mode Indigo-Clean Technology is independently tested to kill 94% of SARS CoV-2 and Influenza-A***, in addition to MRSA
- » Single-Mode Indigo-Clean Technology is independently tested to kill harmful bacteria, such as Staph*, including MRSA**
- » Surface, recessed grid or recessed flange mount – 1'x4', 2'x2', 2'x4'
- » Ingress Barrier Door provides consistent surface for cleanability



PROJECT INFORMATION

Job Name _____

Fixture Type _____

Catalog Number _____

Approved by _____

SPECIFICATIONS

HOUSING: 20-gauge CRS. one-piece construction Housing Flanges – 18-gauge CRS, standard 4-piece construction, spotwelded to housing. White TGIC polyester powder coat – 5-stage pre-treatment. Salt spray test 1,000 hours. Reflectance 92%. See Ordering Options for Antimicrobial Finish.

DOORFRAME: Heavy duty extruded aluminum with clear satin anodized finish. Doorframe supported to housing with aircraft cables (IB-AC) to provide NSF2 listing, or an optional continuous hinged doorframe (IB-HD). Select in ordering options below. Phillips head stainless steel fasteners secure door to housing – eight (8) with IB-AC (1x4, 2x2), ten (10) with IB-AC (2x4), two (2) with IB-HD (2x2) and three (3) with IB-HD (1x4, 2x4). Extruded closed cell gasket seals doorframe to housing. Outer lens sealed to doorframe with a vinyl gasket.

OPTICS: Extruded high-efficiency frosted DR acrylic inner diffuser. Clear impact-resistant acrylic outer lens.

ELECTRICAL: (Single- and Dual-Mode ICT) Serviceable mid-power white and 405nm Indigo LED array. Available 3200K, 3700K and 4300K color temperatures with 3-step MacAdam variation allowance. Minimum 82 CRI standard. 120-277VAC and 347VAC electrical input with serviceable high power factor electronic, constant-current drivers (<10% THD, >0.90 PF). Minimum 85% driver efficiency. Standard 0-10V dimming with 1-100% range and dim-to-dark capabilities. 330µA maximum source current. **Single-Mode ICT** provides a single, white disinfection operational mode. **Dual-Mode ICT** provides two operational modes based on room occupancy. White Disinfection Mode is a white LED array for ambient lighting plus a simultaneous low-power 405nm LED array for low-level, continuous and safe environmental disinfection. Indigo Disinfection Mode is a higher-level 405nm array for continuous safe environmental disinfection during periods of room vacancy. The operational mode is determined via internal low-voltage device based upon the input signal provided by an external control device/system, such as the [IC150](#) product. Luminaire dimming is overridden in this operational state. Refer to the [Kenall Dual-Mode ICT Control Application Guide](#) for further description.

INSTALLATION: SURFACE MOUNT: Four .312" diameter holes. **GRID MOUNT:** Designed for 1" and 1.5" grid. (Housing includes hanging brackets to secure housing with wire to super structure). **FLANGE MOUNT:** Yoke mounting hardware & brackets included. Install Frame and Plaster Frames both positively locates yoke brackets within ceiling opening assures alignment of fixture. Install frame has no need for drywall backing; backing is supplied on the frame brackets.

WARRANTY: Limited five (5) year warranty.

LISTINGS: Luminaire is certified to UL Standards by Intertek Testing Laboratory for Wet Location and non-IC recessed installations (G and F install types). ETL certified IP65 per IEC60598. NSF2 Splash Zone (IB-AC only). EPA Est. No. 99283-WI-1.

* Per independent lab report #5GS-09517036476. Contact Kenall for a copy of this report.

**Antimicrobial Activity of a Continuous Visible Light Disinfection System by Rutala, et. al, ID Week 2016.

***Refer to www.indigo-clean.com for details.



IB-AC ONLY

ORDERING INFORMATION (Ex: MAC22-G-FA-231/55C-37K8-DCC-DV-IB-AC-FS)

| Model | Mounting | Diffuser | Lamp Power | Lamp Color | Driver Type | Voltage | Doorframe | Options | Accessories |
|-------------------------|----------|-----------|------------------------------------|------------|-------------|---------|--|---------|-------------|
| | | FA | | | DCC | | IB- | | |
| Model | | | Lamp Power | | | | Doorframe | | |
| MAC14 1'x4' | | | 1x4 | | | | AC Ingress Barrier w/Aircraft Cables | | |
| MAC22 2'x2' | | | 55C 55W Single-Mode ICT | | | | HD Ingress Barrier w/Continuous Piano Hinge (not NSF2 listed) | | |
| MAC24 2'x4' | | | 231/55C 55W Dual-Mode ICT | | | | | | |
| Mounting Options | | | 2x2 | | | | Options | | |
| F Flange | | | 55C 55W Single-Mode ICT | | | | LEL** LED Emergency Battery Pack | | |
| S Surface | | | 231/55C 55W Dual-Mode ICT | | | | AMF Antimicrobial Finish on exposed painted surfaces | | |
| G Grid (1" and 1.5") | | | | | | | NLW^ 2700K White LED Night Light | | |
| Diffuser Type | | | 2'x4' | | | | NLA^ Amber LED Night Light | | |
| FA Frosted Acrylic | | | 55C 55W Single-Mode ICT | | | | LVC* Low Voltage Controller (Click here for specifications) | | |
| | | | 82C 82W Single-Mode ICT | | | | LVCS* Low Voltage Controller with Secondary Conduit Entry (Click here for specifications) | | |
| | | | 110C 110W Single-Mode ICT | | | | LVCD* Low Voltage Controller with Dimming (Click here for specifications) | | |
| | | | 231/55C 55W Dual-Mode ICT | | | | LVCDs* Low Voltage Controller with Dimming and Secondary Conduit Entry (Click here for specifications) | | |
| | | | 34I/82C 82W Dual-Mode ICT | | | | FS Single Fuse & Holder | | |
| | | | 46I/110C 110W Dual-Mode ICT | | | | | | |
| | | | Lamp Color | | | | Accessories | | |
| | | | 32K8 3200K / 82 CRI min. | | | | IF† Install Frame | | |
| | | | 37K8 3700K / 82 CRI min. | | | | PF† Plaster Frame | | |
| | | | 43K8 4300K / 82 CRI min. | | | | | | |
| | | | Driver Type | | | | | | |
| | | | DCC 0-10V Dimming Constant Current | | | | | | |
| | | | Input Voltage | | | | | | |
| | | | DV 120-277VAC, 50/60Hz | | | | | | |
| | | | 347 347VAC, 50/60Hz | | | | | | |

ACCESSORIES ORDERED SEPARATELY

- MPWS Low Voltage Wall Switch (Click [here](#) for Specifications)
- IC150 External Room Control System for Dual-Mode ICT Products (click [here](#) for Specifications)



www.kenall.com | P: 800-4-Kenall | F: 262-891-9701 | 10200 55th Street Kenosha, Wisconsin 53144, USA

A brand of **legrand**

This product complies with the Buy American Act: manufactured in the United States with more than 50% of the component cost of US origin. It may be covered by patents found at www.kenall.com/patents. Content of specification sheets is subject to change; please consult www.kenall.com for current product details. ©2019 Kenall Mfg. Co.

MEDMASTER™
 Patient Room Luminaires
MAC SERIES using Indigo-Clean Technology

PERFORMANCE

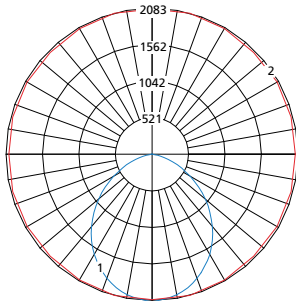
| Technology | Length | Lamp Code | Lumen Output by Color (lm) ¹ | | | Efficacy (lm/W) | Power Consumption ² | | | Estd L70 LED Life (Hrs) |
|-----------------|--------|-----------|---|--------|--------|-----------------|--------------------------------|---------|----------------|-------------------------|
| | | | 32K8 | 37K8 | 43K8 | | Occupied (W) | LPD (W) | Unoccupied (W) | |
| Single-Mode ICT | 1 x 4 | 55C | 4,629 | 4,749 | 4,797 | 76 - 79 | 61 | 51 | n/a | 80,000 |
| | 2 x 2 | 55C | 4,690 | 4,812 | 4,861 | 77 - 80 | 61 | 51 | | |
| | 2 x 4 | 55C | 5,759 | 5,908 | 5,968 | 94 - 98 | 61 | 51 | | |
| | | 82C | 8,695 | 8,921 | 9,012 | 93 - 97 | 93 | 77 | | |
| | | 110C | 10,716 | 10,994 | 11,106 | 88 - 91 | 122 | 101 | | |
| Dual-Mode ICT | 1 x 4 | 23I/55C | 4,629 | 4,749 | 4,797 | 76 - 79 | 61 | 51 | 29 | 80,000 |
| | 2 x 2 | 23I/55C | 4,690 | 4,812 | 4,861 | 77 - 80 | 61 | 51 | 29 | |
| | 2 x 4 | 23I/55C | 5,759 | 5,908 | 5,968 | 94 - 98 | 61 | 51 | 29 | |
| | | 34I/82C | 8,695 | 8,921 | 9,012 | 93 - 97 | 93 | 77 | 44 | |
| | | 46I/110C | 10,716 | 10,994 | 11,106 | 88 - 91 | 122 | 101 | 58 | |

¹Lumen output is with the FA lens type. Information subject to change without notice. Visit www.kenall.com for IES files and additional information.

²Lighting Power and Energy Calculations:

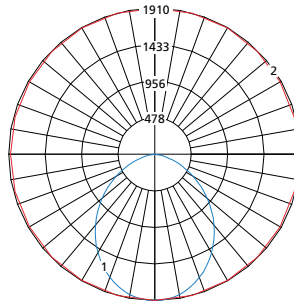
- Use **Occupied Power** for total electrical load calculations. Use this value to estimate branch circuit lighting loads.
- Use **LPD Power** for lighting power density calculations. Only the power attributed to white light is required per NEMA LSD EB 84-202X. Power used toward germicidal disinfection has been removed for this calculation.
- Use **Unoccupied** and **Occupied Power** for Energy calculations to determine the power consumed over time based on the use of the space.

Model: MAC-14-x-FA-55C-37K8-DCC-DV-IB-AC and
 MAC-14-x-FA-23I/55C-37K8-DCC-DV-IB-AC



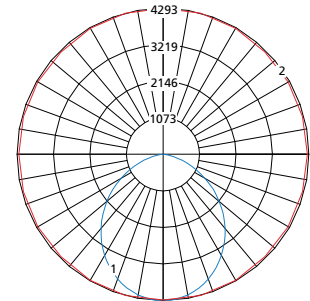
Max Candela = 2083 Located At Horizontal Angle = 75, Vertical Angle = 2.5
 1 - Vertical Plane Through Horizontal Angles (75 - 255) (Through Max. Cd.)
 2 - Horizontal Cone Through Vertical Angle (2.5) (Through Max. Cd.)

Model: MAC-22-x-FA-55C-37K8-DCC-DV-IB-AC and
 MAC-22-x-FA-23I/55C-37K8-DCC-DV-IB-AC



Max Candela = 1910 Located At Horizontal Angle = 90, Vertical Angle = 2.5
 1 - Vertical Plane Through Horizontal Angles (90 - 270) (Through Max. Cd.)
 2 - Horizontal Cone Through Vertical Angle (2.5) (Through Max. Cd.)

Model: MAC-24-x-FA-110C-37K8-DCC-DV-IB-AC and
 MAC-24-x-FA-46I/110C-37K8-DCC-DV-IB-AC



Max Candela = 4293 Located At Horizontal Angle = 75, Vertical Angle = 2.5
 1 - Vertical Plane Through Horizontal Angles (75 - 255) (Through Max. Cd.)
 2 - Horizontal Cone Through Vertical Angle (2.5) (Through Max. Cd.)



MEDMASTER™

Patient Room Luminaires

MAC SERIES using Indigo-Clean Technology

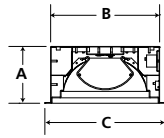
DIMENSIONAL DATA

GRID DIMENSIONAL DATA (IN INCHES)

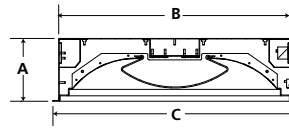
| | A | B | C | D | E |
|-----|------|-------|-------|-------|-------|
| 1x4 | 5.56 | 10.60 | 11.75 | 46.60 | 47.75 |
| 2x2 | 6.10 | 22.60 | 23.75 | 22.60 | 23.75 |
| 2x4 | 6.10 | 22.60 | 23.75 | 46.60 | 47.75 |

GRID MOUNT

CROSS SECTION

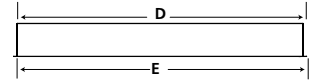


MAC14



MAC22 & MAC24

SIDE VIEW

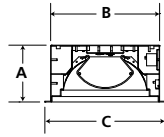


FLANGE DIMENSIONAL DATA (IN INCHES)

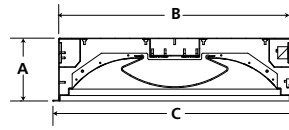
| | A | B | C | D | E | F | G |
|---|------|-------|-------|-------|-------|-------|-------|
| 1x4 | 5.56 | 10.60 | 11.75 | 46.60 | 47.75 | 30.00 | 5.25 |
| Recommended Ceiling Cutout: 10.88" x 46.88" | | | | | | | |
| 2x2 | 6.10 | 22.60 | 23.75 | 22.60 | 23.75 | 12.00 | 12.00 |
| Recommended Ceiling Cutout: 22.88" x 22.88" | | | | | | | |
| 2x4 | 6.10 | 22.60 | 23.75 | 46.60 | 47.75 | 30.00 | 12.00 |
| Recommended Ceiling Cutout: 22.88" x 46.88" | | | | | | | |

FLANGE MOUNT

CROSS SECTION



MAC14

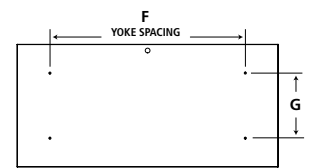


MAC22 & MAC24

SIDE VIEW



TOP VIEW

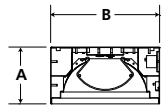


SURFACE DIMENSIONAL DATA (IN INCHES)

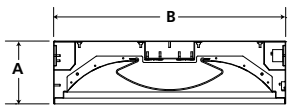
| | A | B | C | D | E |
|-----|------|-------|-------|-------|-------|
| 1x4 | 5.56 | 10.60 | 30.00 | 5.25 | 46.60 |
| 2x2 | 6.13 | 22.60 | 12.00 | 12.00 | 22.60 |
| 2x4 | 6.13 | 22.60 | 30.00 | 12.00 | 46.60 |

SURFACE MOUNT

CROSS SECTION



MAC14



MAC22 & MAC24

TOP VIEW

