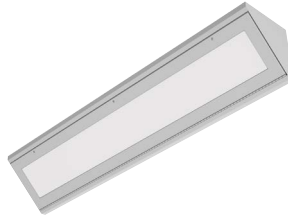


SIMPLESEAL™

HSECI SERIES – LF CORNER MOUNT – INSET DOOR

PRODUCT FEATURES:

- » Surface corner mount – 1'x4'
- » One-piece inset doorframe secured to housing with aircraft cables
- » 20-gauge, hole-free one-piece cold rolled steel housing
- » Closed cell extruded silicone gasket seals doorframe to housing
- » Hazardous Location Listings include Class I, Division 2, Groups A, B, C, D



PROJECT INFORMATION

Job Name _____

Fixture Type _____

Catalog Number _____

Approved by _____

SPECIFICATIONS:

HOUSING: 20-gauge CRS. Hole-free three-piece seam welded construction. White TGIC polyester powder coat finish – 5-step pre-treatment. Salt spray test: 1,000 hours; Reflectance: 92%.

LENS: .125" P12 acrylic lens sealed to doorframe with silicone sealant and secured with continuous lens retention system. Lens orientation – smooth side out.

DOORFRAME: 18-gauge CRS. One-piece inset construction welded corners. White TGIC polyester powder coat finish – 5-step pre-treatment. Salt spray test: 1,000 hours; Reflectance: 92%. Doorframe secured to housing with aircraft cables and 6 captive mounted Phillips head stainless steel fasteners. Closed cell extruded silicone gasket seals doorframe to housing.

ELECTRICAL: Fluorescent electronic ballasts (<10% THD). Lamps by others. See Electrical Options for additional options.

INSTALLATION: Four .312" holes for surface mounting.

WARRANTY: Limited one (1) year Kenall fluorescent warranty.

LISTINGS: UL and CUL Listed for Wet Location. UL certified IP65 per IEC 60598. NSF2 Splash/Non-Food Zone. Hazardous Location Listings include Class I, Division 2, Groups A, B, C, D.

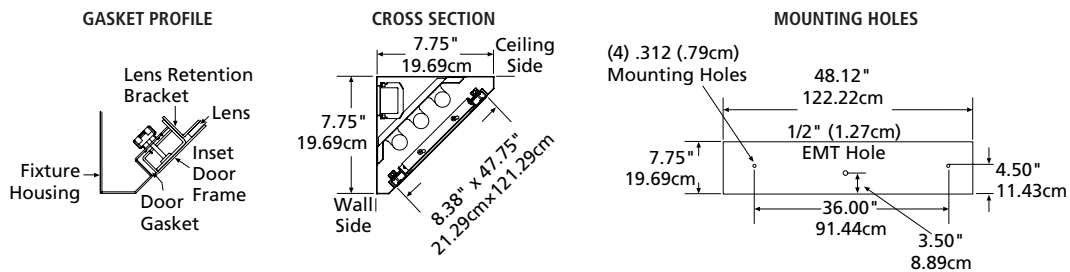


ORDERING INFORMATION (Ex: HSECI14-2-32-IS-1-120-2F-2H-1)

Model	Lamp Qty/Type	Ballast Type	Ballast Qty	Voltage	Doorframe Option	Housing	Lens Type	Options
HSECI14								
	Lamp Quantity/Type	Ballast Type	Ballast Quantity	Voltage	Doorframe Options		Lens Type	
	1-32 One F32T8		1 One	120 120 Volts	2F 18-Ga CRS Painted (STD)		Acrylic	
	2-32 Two F32T8		2 Two	277 277 Volts	AF Anodized Aluminum		1 .125" #12 Prismatic (STD)	
	3-32 Three F32T8			347 347 Volts	PAF Painted Fabricated Aluminum		T .125" Clear	
					5F 20-Ga Type 304 SS Brushed		U .125" #12 Prismatic Impact Blend	
	Ballast Type				Housing Options		Polycarbonate	
	IS Instant Start Electronic <10% THD				2H 20-Ga CRS (STD)		2 .125" #12 Prismatic	
	RS Rapid Start Electronic <10% THD				5H 20-Ga Type 304 SS		G .125" Clear	
	SB Specified Ballast				PAH .050" (.13cm) Painted Aluminum		6 .187" #12 Prismatic	
							Tempered Glass	
							TG .156" Textured Tempered Glass	
							Specified Lens	
							SL Specified Lens	
							Options	
							FS Fuse & Holder	
							HJ Sealed Wireway	
							TH 1/2" Trade Size Threaded Hub	

HAZARDOUS LOCATION T-RATINGS	
Lamp Type	Operating Temp/Temp Code
F32T8	85° C/T6

DIMENSIONAL DATA



www.kenall.com | P: 800-4-Kenall | F: 262-891-9701 | 10200 55th Street Kenosha, Wisconsin 53144, USA

A brand of **legrand**

This product complies with the Buy American Act: manufactured in the United States with more than 50% of the component cost of US origin. It may be covered by patents found at www.kenall.com/patents. Content of specification sheets is subject to change; please consult www.kenall.com for current product details. ©2019 Kenall Mfg. Co.

HSECI14-101818