

# ENVIROSEAL™

## Food Processing Luminaires

### FES SERIES

#### PRODUCT FEATURES:

- » Surface mount – ceiling or wall; 5" x24", 5" x36", 5" x48", 5" x96"
- » One-piece 20-gauge housing with UV-stabilized polycarbonate lens
- » IP65 option available
- » For Hazardous applications please refer to the HES series



#### PROJECT INFORMATION

Job Name \_\_\_\_\_

Fixture Type \_\_\_\_\_

Catalog Number \_\_\_\_\_

Approved by \_\_\_\_\_

#### SPECIFICATIONS:

**HOUSING:** One-piece, seam-welded 20-gauge CRS. Base provided with two-point mounting holes and one wireway hole. Lens is positioned in baseplate channels and retained with stainless steel fastener(s). Base mounts flush to ceiling or wall surface.

**LENS/GASKET:** UV-stabilized, pearlescent or clear polycarbonate. Smooth exterior, linear prismatic interior. Nominal thickness .125". Linear silicone gasket to seal doorframe to housing.

**FINISH:** Brushed stainless steel finish (#4B) or white TGIC polyester powder coat – 5-stage pre-treatment; Salt spray test: 1,000 hours; Reflectance: 92%.

**SOCKETS:** Shock-resistant sockets with internal locking collar to ensure positive lamp retention.

**HARDWARE:** One Type 302 stainless steel Phillips head fastener secures lens in housing channel.

**ELECTRICAL:** **LED:** Available 3000K, 3500K, 4000K and 5000K color temperatures, 82 CRI. 120-277VAC or 347VAC, 50/60Hz electrical input with serviceable high power factor electronic, constant-current driver (<20% THD, >0.95 PF). Standard 0-10V dimming with 1-100% range and dim-to-dark capabilities (non dim-to-dark with 347V); 330µA max. source current. **LE:** Class P ballast. Fluorescent electronic 120/277 or 347 voltage ballasts, high power factor. Optional one-lamp 90 minute nickel-cadmium battery pack (EL) includes inverter charger, test switch and charging indicator lamp.

**SENSOR & CONTROLS:** Optional sensor available with compatible third party controls. To see the full list of compatible controls, [click here](#).

**PHOTOMETRICS:** Photometry tested to the IESNA LM-79-08 standard by an ILAC/ISO17025 accredited laboratory. For additional photometric data, please go to [www.kenall.com](http://www.kenall.com).

**WARRANTY:** Limited five (5) year LED warranty. [Peace of Mind Guarantee against breakage](#).

**LISTINGS/CERTIFICATIONS:** UL and CUL listed for Wet Location – ceiling mount covered ceiling. UL and CUL listed for Damp Location – horizontal wall mount. Optional UL and CUL Listed for Wet Location (WW Option) – horizontal wall mount. Optional UL certified IP65 per IEC 60598 (IP65 Option) – ceiling mount. NSF2 Splash/Non-Food Zone. Rated for use in FED-STD 209E/Class 1 (ISO 3) Cleanrooms.



#### ORDERING INFORMATION (Ex: FES5-48-45L50K-DCC-1-DV-2H-PP-FS)

Model	Length	Lamp Qty/Type	Ballast/Driver Type	Ballast/Driver Qty	Voltage	Housing	Lens Type	Options
<b>FES5</b>								
<b>Nominal Length</b>			<b>8' Lengths (Lamp Qty per 4' Cross Section)</b>			<b>Lens Type</b>		
24	2'		1-45L30K	45 Watt 3000K LED		PP	Pearlescent Polycarbonate	
36	3'		1-45L35K	45 Watt 3500K LED		CP*	Clear Polycarbonate	
48	4'		1-45L40K	45 Watt 4000K LED				
96	8'		1-45L50K	45 Watt 5000K LED				
<b>Lamp Type</b>			<b>Ballast/Driver Type</b>			<b>Options</b>		
<b>2' Lengths</b>			<b>DCC</b> Dimming Constant Current (LED)			<b>LEL*</b> LED Emergency Battery Backup		
1-14*	F14T5		<b>IS</b> Elec <10% THD Instant Start (T8)			<b>EL*‡</b> Standard Lumen EL Pack (450 lumens) (n/a with LED)		
2-14*	F14T5		<b>RS</b> Elec <10% THD Rapid Start (T5, T5HO, T8)			<b>PEL*‡</b> High Lumen EL Pack (1100 lumens) (n/a with LED)		
1-17	F17T8		<b>SB</b> Specified Ballast			<b>SEL*‡</b> Specified EL Pack (n/a with LED)		
2-17	F17T8		<b>Ballast/Driver Quantity</b>			<b>FS</b> Single Fuse & Holder (n/a with 347V)		
1-31U	F31T8 - 1.62" U		<b>1</b> One			<b>HC^</b> Row Mount Hub Connector (see KO option)		
2-31U	F31T8 - 1.62" U		<b>2</b> Two			<b>KO^</b> Continuous Row Mount - .875" diameter knockout in end caps (see HC option for Kenall supplied attachment connector)		
<b>3' Lengths</b>			<b>Voltage</b>			<b>PM^†</b> Pendant Mount (damp locations only) – suspension hardware by others		
1-21	F21T5		<b>DV</b> 120-277 Volts			<b>IP65***</b> UL certified IP65 Listing (Ceiling Mount)		
2-21	F21T5		<b>347</b> 347 Volt			<b>WW***</b> UL/CUL Wet Location Listing – Horizontal Wall Mount		
1-25	F25T8		<b>Housing Options</b>			<b>TR</b> Tamper Resistant Torx® Fastener		
2-25	F25T8		<b>2H</b> 20-Ga CRS; Painted			▲ n/a with 347V		
<b>4' Lengths</b>			<b>P5H</b> 20-Ga 304SS; Painted			* Option not available with 2' fixtures with LED, or F21T5 lamps		
1-45L30K	45 Watt 3000K LED		<b>5H</b> 20-Ga 304SS; Brushed			** Not available with KO or PM options		
1-45L35K	45 Watt 3500K LED		<b>PXH</b> 20-Ga 316SS; Painted			^ Not available with IP65 or WW options		
1-45L40K	45 Watt 4000K LED		<b>XH</b> 20-Ga 316SS; Brushed			+ Not available with IP65 option		
1-45L50K	45 Watt 5000K LED					‡ 347V available only with F25T8/F32T8 Lamps		
1-28*	F28T5					† Consult factory for pendant mount hole locations.		
2-28*	F28T5					● Add .375" to overall length		
1-32	F32T8					▼ n/a with LED		
2-32	F32T8							
1-54	F54T5HO							
2-54	F54T5HO							



www.kenall.com | P: 800-4-Kenall | F: 262-891-9701 | 10200 55th Street Kenosha, Wisconsin 53144, USA

A brand of **Legrand**

This product complies with the Buy American Act: manufactured in the United States with more than 50% of the component cost of US origin. It may be covered by patents found at [www.kenall.com/patents](http://www.kenall.com/patents). Content of specification sheets is subject to change; please consult [www.kenall.com](http://www.kenall.com) for current product details. ©2022 Kenall Mfg. Co.

# ENVIROSEAL™

## Food Processing Luminaires

For additional photometry, go to [www.kenall.com](http://www.kenall.com)

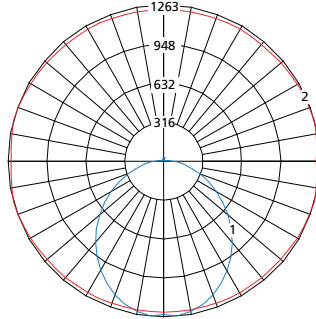
### FES SERIES

#### PERFORMANCE

Lamp Type	Initial Delivered Lumens		Input Power (W)	Drive Current (mA)	Estd. L70 LED Life (Hrs)
	@ 25°C	Efficacy (lm/W)			
45L30K	4,410	90	49	100	80,000
45L35K	4,546	93			
45L40K	4,701	96			
45L50K	4,825	98			

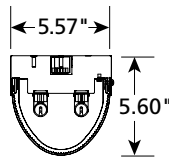
Displayed information above is for PP lens type. Info subject to change. Visit [www.kenall.com](http://www.kenall.com) for IES files and additional information.

Model: ES5-48-45L40K-DCC-DV-2H-PP

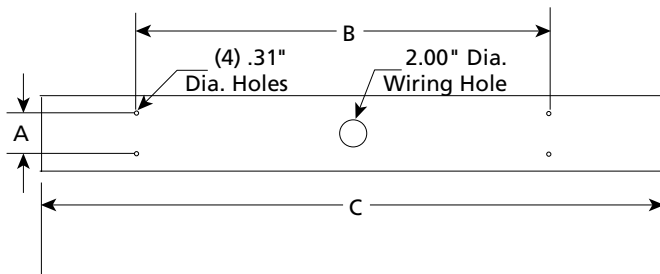


Max Candela = 1263 Located At Horizontal Angle = 15, Vertical Angle = 5  
 1 - Vertical Plane Through Horizontal Angles (15 - 195) (Through Max. Cd.)  
 2 - Horizontal Cone Through Vertical Angle (5) (Through Max. Cd.)

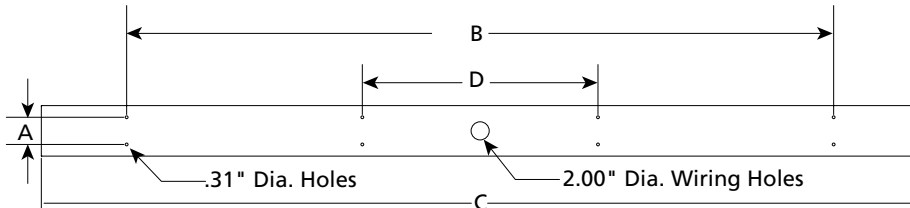
#### DIMENSIONAL DATA



DIMENSIONAL DATA (IN INCHES)				
	A	B	C	D
FES524 – T5	3.00	16.00	23.25	
FES524 – T8	3.00	16.00	24.75	
FES536 – T5	3.00	20.00	35.00	
FES536 – T8	3.00	20.00	36.75	
FES548 – T5	3.00	32.00	46.75	
FES548 – T8/LED	3.00	32.00	48.75	
FES596 – T5	3.00	78.00	92.87	26.00
FES596 – T8	3.00	78.00	96.83	26.00



96" BASEPLATE



[www.kenall.com](http://www.kenall.com) | P: 800-4-Kenall | F: 262-891-9701 | 10200 55th Street Kenosha, Wisconsin 53144, USA

A brand of **legrand**

This product complies with the Buy American Act: manufactured in the United States with more than 50% of the component cost of US origin. It may be covered by patents found at [www.kenall.com/patents](http://www.kenall.com/patents). Content of specification sheets is subject to change; please consult [www.kenall.com](http://www.kenall.com) for current product details. ©2022 Kenall Mfg. Co.