

ENVIROSEAL™

ES5 SERIES

PRODUCT FEATURES:

- » Surface mount – ceiling or wall; 5"×24" (12.70cm×60.96cm), 5"×36" (12.70cm×91.44cm), 5"×48" (12.70cm×121.92cm), 5"×96" (12.70cm×243.84cm)
- » Cold rolled steel or stainless steel housing for corrosion resistance
- » Continuous row mount for multiple luminaires
- » IP65 Option available



PROJECT INFORMATION

Job Name _____

Fixture Type _____

Catalog Number _____

Approved by _____

SPECIFICATIONS

HOUSING: One-piece, seam-welded 20-gauge CRS. Base provided with four-point mounting holes and one wireway hole. Lens is positioned in baseplate channels and retained with stainless steel fastener(s). Base mounts flush to ceiling or wall surface.

LENS/GASKET: UV-stabilized, pearlescent or clear polycarbonate. Smooth exterior, linear prismatic interior. Nominal thickness .125" (.32cm). IP65 option provided with linear silicone gasket to seal lens frame to housing.

FINISH: Brushed stainless steel finish (#4B) or white TGIC polyester powder coat – 5-stage pre-treatment; Salt spray test: 1,000 hours; Reflectance: 92%.

HARDWARE: One Type 302 stainless steel Phillips head fastener secures lens in housing channel.

ELECTRICAL: LED; Available 3500K, 4000K and 5000K color temperatures, 82 CRI. 120-277VAC or 347VAC, 50/60Hz electrical input with serviceable high power factor electronic, constant-current driver (<20% THD, >0.95 PF). Standard 0-10V dimming with 1-100% range and dim-to-dark capabilities (non dim-to-dark with 347V); 330µA max. source current. Optional embedded microwave motion sensor (MS) has factory default settings of 20 minute time out, dims down to 30%. LE: Class P ballast. Fluorescent electronic 120/277 or 347 voltage ballasts, high power factor. Optional one-lamp 90 minute nickel-cadmium battery pack (EL) includes inverter charger, test switch and charging indicator lamp.

SOCKETS: Shock-resistant fluorescent sockets with internal locking collar to ensure positive lamp retention. Three year warranty on LED lamps and driver for defects resulting in a fixture lumen depreciation of 30% or greater.

WARRANTY: Limited five (5) year LED warranty.

LISTINGS: UL and CUL listed for Wet Location – covered ceiling. UL and CUL listed for Damp Location – horizontal wall mount. Optional UL and CUL Listed for Wet Location (WW Option) – horizontal wall mount. Optional UL certified IP65 per IEC 60598 (IP65 Option) – ceiling mount.

PEACE OF MIND
Guarantee®



ORDERING INFORMATION (Ex: ES5-48-1-45L50K-DCC-1-DV-2H-PP-FS)

Model Length Lamp Qty/Lamp Type Ballast/Driver Type Ballast/Driver Qty Voltage Housing Lens Type Options

ES5

Nominal Length

| | |
|----|---------------|
| 24 | 2' (60.96cm) |
| 36 | 3' (91.44cm) |
| 48 | 4' (121.92cm) |
| 96 | 8' (243.84cm) |

Lamp Qty/Type

2' (60.96cm) Lengths

| | |
|-------------------|--------------------------|
| 1-25L35K | 25 Watt 3500K LED |
| 1-25L40K | 25 Watt 4000K LED |
| 1-25L50K | 25 Watt 5000K LED |
| 1-14 [▲] | F14T5 |
| 2-14 [▲] | F14T5 |
| 1-17 | F17T8 |
| 2-17 | F17T8 |
| 1-31U | F31T8 – 1.62" (4.11cm) U |
| 2-31U | F31T8 – 1.62" (4.11cm) U |

3' (91.44cm) Lengths

| | |
|------|-------|
| 1-21 | F21T5 |
| 2-21 | F21T5 |
| 1-25 | F25T8 |
| 2-25 | F25T8 |

4' (121.92cm) Lengths

| | |
|-------------------|-------------------|
| 1-45L35K | 45 Watt 3500K LED |
| 1-45L40K | 45 Watt 4000K LED |
| 1-45L50K | 45 Watt 5000K LED |
| 1-28 [▲] | F28T5 |
| 2-28 [▲] | F28T5 |
| 1-32 | F32T8 |
| 2-32 | F32T8 |
| 1-54 | F54T5HO |
| 2-54 | F54T5HO |

Lamp Qty/Type (cont'd)

8' (243.84cm) Lengths (Lamp Qty per 4' (121.92cm) Cross Section)

| | |
|-------------------|-------------------|
| 1-45L35K | 45 Watt 3500K LED |
| 1-45L40K | 45 Watt 4000K LED |
| 1-45L50K | 45 Watt 5000K LED |
| 1-28 [▲] | F28T5 |
| 2-28 [▲] | F28T5 |
| 1-32 | F32T8 |
| 2-32 | F32T8 |
| 1-54 | F54T5HO |
| 2-54 | F54T5HO |

Ballast Type

| | |
|-----|--|
| DCC | Dimming Constant Current (LED) |
| IS | Elec <10% THD Instant Start (T8) |
| RS | Elec <10% THD Rapid Start (T5, T5HO, T8) |
| SB | Specified Ballast |

Ballast Quantity

| | |
|---|-----|
| 1 | One |
| 2 | Two |

Voltage

| | |
|-----|---------------|
| DV | 120-277 Volts |
| 347 | 347 Volt |

Housing Options

| | |
|-----|----------------------|
| 2H | 20-Ga CRS; Painted |
| P5H | 20-Ga 304SS; Painted |
| 5H | 20-Ga 304SS; Brushed |
| PXH | 20-Ga 316SS; Painted |
| XH | 20-Ga 316SS; Brushed |

Lens Type

| | |
|-----------------|---------------------------|
| PP | Pearlescent Polycarbonate |
| CP [▼] | Clear Polycarbonate |

Options

| | |
|-------------------|--|
| LEL [▲] | LED Emergency Battery Backup (45L lamp type only) |
| EL*‡ | Standard Lumen EL Pack (450 lumens) (n/a with LED) |
| PEL*‡ | High Lumen EL Pack (1100 lumens) (n/a with LED) |
| SEL*‡ | Specified EL Pack (n/a with LED) |
| FS [▲] | Single Fuse & Holder |
| HC [^] | Row Mount Hub Connector (see KO option) |
| KO [^] | Continuous Row Mount - .875" (2.22cm) diameter knockout in end caps (see HC option for Kenall supplied attachment connector) |
| PM [^] † | Pendant Mount (damp locations only) – suspension hardware by others |
| TN120 | 120 Volt, 13 Watt Twin Tube NPF Night Light (n/a with LED) |
| TN277 | 277 Volt, 13 Watt Twin Tube NPF Night Light (n/a with LED) |
| IP65**• | UL certified IP65 – Ceiling Mount (w/removable end caps – not suitable for continuous row mount) |
| WW**+• | UL/CUL Wet Location Listing – Horizontal Wall Mount (w/removable end caps – not suitable for continuous row mount) |
| TR | Tamper Resistant Torx® Fastener |
| MS | Motion Sensor (4' LED only; n/a with 347 Voltage) |

- ▲ n/a with 347V
- * Option not available with 2' (60.96cm) fixtures, with LED, or F21T5 lamps
- ** n/a with KO or PM options
- ^ n/a with IP65 or WW options
- + n/a with IP65 option
- ‡ 347V available only with F25T8/F32T8 Lamps
- † Consult factory for pendant mount hole locations.
- Add .375" (.95cm) to overall length
- ▼ n/a with LED



www.kenall.com | P: 800-4-Kenall | F: 262-891-9701 | 10200 55th Street Kenosha, Wisconsin 53144, USA

A brand of **legrand**

This product complies with the Buy American Act: manufactured in the United States with more than 50% of the component cost of US origin. It may be covered by patents found at www.kenall.com/patents. Content of specification sheets is subject to change; please consult www.kenall.com for current product details. ©2019 Kenall Mfg. Co.

ENVIROSEAL™

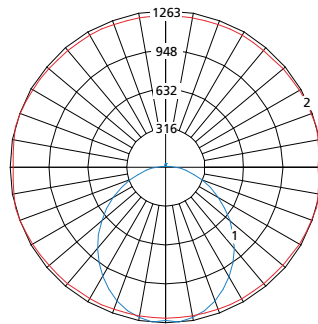
ES5 SERIES

PERFORMANCE

| Lamp Type | Initial Delivered Lumens | | Input Power (W) | Drive Current (mA) | Estd. L70 LED Life (Hrs) |
|-----------|--------------------------|-----------------|-----------------|--------------------|--------------------------|
| | @ 25°C | Efficacy (lm/W) | | | |
| 25L35K | 2,205 | 88 | 25 | 100 | 80,000 |
| 25L40K | 2,351 | 94 | 25 | 100 | 80,000 |
| 25L50K | 2,412 | 96 | 25 | 100 | 80,000 |
| 45L35K | 4,410 | 90 | 49 | 100 | 80,000 |
| 45L40K | 4,701 | 96 | 49 | 100 | 80,000 |
| 45L50K | 4,825 | 98 | 49 | 100 | 80,000 |

Displayed information above is for PP lens type. Info subject to change. Visit www.kenall.com for IES files and additional information.

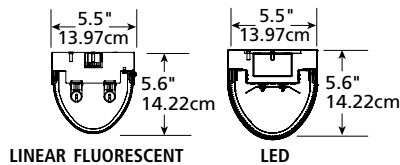
Model: ES5-48-45L40K-DCC-DV-2H-PP



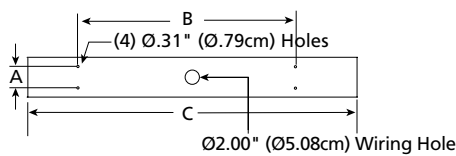
Max Candela = 1263 Located At Horizontal Angle = 15, Vertical Angle = 5
 1 - Vertical Plane Through Horizontal Angles (15 - 195) (Through Max. Cd.)
 2 - Horizontal Cone Through Vertical Angle (5) (Through Max. Cd.)

DIMENSIONAL DATA

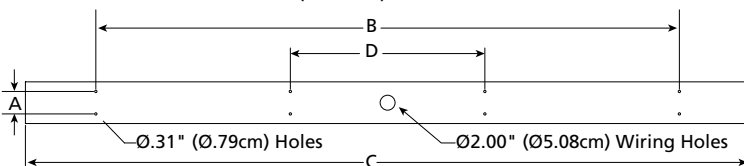
CROSS SECTION



BASEPLATE



96" (243.84cm) BASEPLATE



DIMENSIONAL DATA (IN INCHES & CENTIMETERS)

| | A | B | C | D |
|----------------|------|--------|--------|-------|
| ES524 – T5 | 3.00 | 16.00 | 23.25 | |
| cm | 7.62 | 40.64 | 59.06 | |
| ES524 – T8 | 3.00 | 16.00 | 24.75 | |
| cm | 7.62 | 40.64 | 62.87 | |
| ES536 – T5 | 3.00 | 20.00 | 35.00 | |
| cm | 7.62 | 50.80 | 88.90 | |
| ES536 – T8 | 3.00 | 20.00 | 36.75 | |
| cm | 7.62 | 50.80 | 93.35 | |
| ES548 – T5 | 3.00 | 32.00 | 46.75 | |
| cm | 7.62 | 81.28 | 118.75 | |
| ES548 – T8/LED | 3.00 | 32.00 | 48.75 | |
| cm | 7.62 | 81.28 | 123.83 | |
| ES596 – T5 | 3.00 | 78.00 | 92.87 | 26.00 |
| cm | 7.62 | 198.12 | 235.89 | 66.04 |
| ES596 – T8 | 3.00 | 78.00 | 96.83 | 26.00 |
| cm | 7.62 | 198.12 | 245.95 | 66.04 |



www.kenall.com | P: 800-4-Kenall | F: 262-891-9701 | 10200 55th Street Kenosha, Wisconsin 53144, USA

A brand of Legrand

This product complies with the Buy American Act: manufactured in the United States with more than 50% of the component cost of US origin. It may be covered by patents found at www.kenall.com/patents. Content of specification sheets is subject to change; please consult www.kenall.com for current product details. ©2019 Kenall Mfg. Co.