

ENVIROPRO™

EPC SERIES

PRODUCT FEATURES:

- » Two point suspended or surface mount – available in 2', 4' and 8' lengths
- » 90 degree rotational aiming, 45 degrees to each side
- » Toolless for easy installation and servicing
- » Uplight option available
- » Meets stringent NEMA 4X hosedown criteria



PROJECT INFORMATION

Job Name _____

Fixture Type _____

Catalog Number _____

Approved by _____

SPECIFICATIONS:

HOUSING: 6-1/2" diameter impact resistant acrylic.

END CAPS: Die formed tumbled finish Type 304 stainless steel.

REFLECTORS: High reflectance formed aluminum.

ELECTRICAL: Fluorescent rapid start electronic ballasts, high power factor (<10% THD). See Ordering Information for optional equipment. Lamps by others. 6' cable and water tight connector standard. Water tight quick disconnect optional.

MAINTENANCE: Removal of one end cap for lamp assembly removal for lamp replacement or ballast maintenance.

INSTALLATION: Two point suspended mounting using cables or chain (by others) or ceiling mount using supplied type 304 stainless steel brackets.

WARRANTY: One (1) year limited warranty for Kenall fluorescent products.

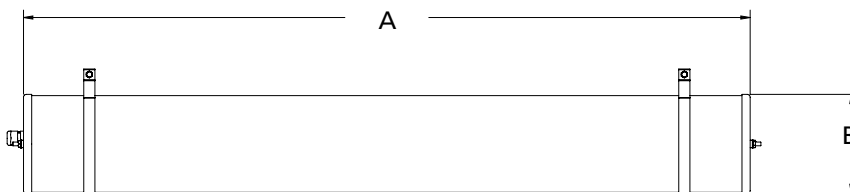
LISTINGS: Luminaire is certified to UL Standards by Intertek Testing Laboratory for Wet Location. ETL certified IP65 per IEC 60598. NSF2 Food Zone/Non-Contact. NEMA 4X rated.



ORDERING INFORMATION (Ex: EPC-48-C-2-32-RS-120)

Model	Length	Mounting	Lamp Qty/Type	Ballast Type	Voltage	Options
EPC						
Nominal Length	Lamp Quantity/Type (cont.)		Lamp Quantity/Type (cont.)		Ballast Type	
24 2'	4' Length		8' Length		IS Instant Start Ballast (T8 lamps only)	
48 4'	1-28 One F28T5		2-28 Two F28T5		RS Rapid Start Electronic <10% THD (T5, T5HO, T8, T8HO)	
96 8'	2-28 Two F28T5		4-28 Four F28T5		SB Specified Ballast	
	3-28 Three F8T5 (2 down, 1 up)		6-28 Six F28T5 (4 down, 2 up)		Voltage	
Mounting Style	1-32 One F32T8		2-32 Two F32T8		120 120 Volts	
C Suspended	2-32 Two F32T8		4-32 Four F32T8		277 277 Volts	
S* Surface	3-32 Three F32T8 (2 down, 1 up)		6-32 Six F32T8 (4 down, 2 up)		347 347 Volts	
	1-48 One F48T8HO		2-48 Two F48T8HO		DV 120-277 Volts	
Lamp Quantity/Type	2-48 Two F48T8HO		4-48 Four F48T8HO		Options	
2' Length	1-54 One F54T5HO		1-96 One F96T8HO		AMEC Antimicrobial Finish CRS End Caps	
1-14 One F14T5	2-54 Two F54T5HO		2-96 Two F96T8HO		EL Standard lumen one lamp EL pack (n/a for 347V or uplight option)	
2-14 Two F14T5	3-54 Three F54T5HO (2 down, 1 up)		2-54 Two F54T5HO		FS Fuse & Holder	
1-17 One F17T8	1-54A One F54T5HO amalgam		4-54 Four F54T5HO		QCC Quick Disconnect Connector	
2-17 Two F17T8	2-54A Two F54T5HO amalgam		6-54 Six F54T5HO (4 down, 2 up)		C-3578 F54T5HO Coated/Sealed AMALGAM lamps	
1-24 One F24T5HO	3-54A Three F54T5HO amalgam (2 down, 1 up)		2-54A Two F54T5HO amalgam			
2-24 Two F24T5HO			4-54A Four F54T5HO amalgam			
			6-54A Six F54T5HO amalgam (4 down, 2 up)			

DIMENSIONAL DATA



DIMENSIONAL DATA (IN INCHES)

	A	B
2'	24.75	6.67
4'	48.75	6.67
8'	96.75	6.67

*NOTE: For surface mounting style, the distance from the mounting surface to the top of the fixture is 7.50".



www.kenall.com | P: 800-4-Kenall | F: 262-891-9701 | 10200 55th Street Kenosha, Wisconsin 53144, USA

A brand of Legrand

This product complies with the Buy American Act: manufactured in the United States with more than 50% of the component cost of US origin. It may be covered by patents found at www.kenall.com/patents. Content of specification sheets is subject to change; please consult www.kenall.com for current product details. ©2019 Kenall Mfg. Co.