

SIMPLESEAL™ NARROW SPECTRUM

CSEDI SERIES – RED & WHITE LED – INSET DOOR

PROJECT INFORMATION

Job Name _____

Fixture Type _____

Catalog Number _____

Approved by _____

PRODUCT FEATURES:

- » Narrow-spectrum 630nm red LED circuit provides only high-purity light for spectrally-sensitive applications
- » High-output, high-CRI white LED circuit provides visual acuity and accurate color rendition
- » Diffused high-efficiency lens for reduced glare
- » One-piece inset doorframe, secured to housing with aircraft cables
- » Suitable for universal installation into 1.0" and 1.5" grid or flange (drywall) ceilings



1'x4'

2'x2'

2'x4'

SPECIFICATIONS

HOUSING: Standard 24-gauge (optional 20-gauge) cold rolled steel, hole-free, one-piece, seam-welded construction. 18-gauge housing flange with mitered and welded corners. White TGIC polyester powder coat finish – 5-step pre-treatment. Salt spray test: 1,000 hours; Reflectance: 92%.

DOORFRAME: 18-gauge CRS. One-piece inset-style construction with welded corners. Gloss white TGIC polyester powder coat finish with 5-stage pre-treatment. Doorframe secured to housing with stainless steel aircraft cables and captive, flush-mounted Phillips-head fasteners. Closed-cell silicone gasket seals doorframe to housing.

OPTICS: Symmetric optic includes diffused, impact-resistant acrylic lens.

ELECTRICAL: Replaceable white mid-power LED array. Available 3500K, 4000K and 5000K color temperatures with maximum 3-step MacAdam variation allowance. Minimum 82 CRI, R9>0. 630nm red mid-power LED array (16nm FWHM bandwidth). 120/277VAC or 347VAC, 50/60Hz electrical input with replaceable high power factor electronic, constant-current driver (<10% THD, >0.90 PF). Minimum 85% driver efficiency. Standard 0-10V dimming with 1-100% range with dim-to-dark capabilities on white and red circuit (non dim-to-dark with 347V; 495 µA maximum source current per circuit). Optional 0-10V dimming with 0.1-100% range and dim-to-dark capabilities via eldoLED SOLoDrive series driver (n/a 347V input; ≤0.5V required from dimming control for dim-to-dark operation; 600µA max. source current). White circuit and red circuit can be independently powered and dimmed.

INSTALLATION: Non-IC recessed ceiling mounting into grid and flange application types. Flange installation utilizes included adjustable swing-out mounting brackets. Grid installation suitable for 1" and 1.5" T-bar ceilings. Universal installation into grid or flange (drywall) ceiling applications. See Options for continuous row mounting and install frames.

PHOTOMETRICS: Photometry tested to the IESNA LM-79-08 standard. For additional photometric data, please go to www.kenall.com

WARRANTY: Limited five (5) year warranty.

LISTINGS: Luminaire is certified to UL standards by Intertek Testing Laboratories for Wet Location. Certified IP65 per IEC 60598. NSF2 Splash/Non-Food Zone. CCEA Approved. Meets K230 Leakage Standard for luminaire leakage in pressurized environments and FED-STD-209E/Class 1 (ISO 3) Cleanrooms. Suitable for BSL 1-2 laboratories. Suitable for EU GMP Grade A cleanrooms.



ORDERING INFORMATION (Ex: CSEDI-24-23RD/67L-40K8-DIM1-DV-2F-2H-SYM)

Model	Size	Lamp Power	Lamp Color	Driver	Voltage	Doorframe	Housing	Optics	Options	
CSEDI							SYM			
Size				Driver Type			Housing Options			
14	1'x4'			DIM1	0-10V Dimming to 1%		4H	24-Ga CRS (STD)		
22	2'x2'			DIM01	0-10V Dimming to 0.1% (n/a with 347V)		2H	20-Ga CRS		
24	2'x4'						5H	20-Ga Type 304 SS		
							PAH	.050" Painted Aluminum		
Lamp Power				Voltage			Optics			
1'x4'				DV	120-277VAC, 50/60Hz	SYM			Symmetric, Diffused DR Acrylic	
23R/45L		23 Watt Red/45 Watt White LED		120	120VAC	Options				
23R/67L		23 Watt Red/67 Watt White LED		277	277VAC	LEL*	8.4W Emergency Battery Pack			
23R		23 Watt Red LED		347	347VAC	20KV	20KV/KA Surge Protection per IEEE/ANSI C62.41.2 Cat. A			
						AMF*	Antimicrobial Finish			
2'x2'				Doorframe Options			FS	Fuse & Holder		
23RD/45LD		23 Watt Red/45 Watt White LED		2F	18-Ga CRS (STD)	HJ	Sealed Wireway			
23RD/67L		23 Watt Red/67 Watt White LED		5F	20-Ga Type 304 SS Brushed	RF	Radio Frequency Filter			
23RD		23 Watt Red LED		AF	Anodized Aluminum	RM†	Continuous Row Mounting			
				PAF	Painted Fabricated Aluminum	Accessories				
2'x4'										
23RD/67L		23 Watt Red/67 Watt White LED								
23RD/90L		23 Watt Red/90 Watt White LED								
23RD/135L		23 Watt Red/135 Watt White LED								
46R		46 Watt Red LED								
Lamp Color†										
35K8		3500K, 82 CRI								
40K8		4000K, 82 CRI								
50K8		5000K, 82 CRI								

- * Add .375" to ceiling cut out dimensions
- † Only available when installed in drywall ceilings (flange mount), Consult factory for ceiling layout assistance
- Voltage specific selection required. n/a with 23R/67L lamp on 1'x4' and 2'x2' sizes
- ▲ Voltage specific selection required; n/a with 347V. Wired to white LED when red white lamping is selected. Height of fixture is 5.875" with LEL Option. 0°C/32°F min. operating environment.
- ‡ Not applicable for all-red configurations
- ▼ Applied only to exposed painted surfaces of luminaire (not available on stainless steel doorframes)



www.kenall.com | P: 800-4-Kenall | F: 262-891-9701 | 10200 55th Street Kenosha, Wisconsin 53144, USA

A brand of **Legrand**

This product complies with the Buy American Act: manufactured in the United States with more than 50% of the component cost of US origin. It may be covered by patents found at www.kenall.com/patents. Content of specification sheets is subject to change; please consult www.kenall.com for current product details. ©2019 Kenall Mfg. Co.

SIMPLESEAL™

CSEDI SERIES – TECHNICAL DATA

PERFORMANCE

Red/White LED

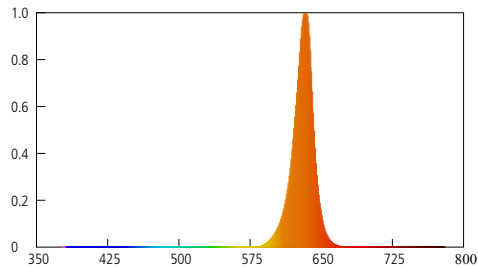
Size	Lamp Code	Red Circuit			White Circuit			White/Red Estd. L ₇₀ LED Life (hrs)
		Delivered Lumens @ 25°C (lm)	Efficacy (lm/W)	Input Power (W)	Delivered Lumens @ 25°C (lm)	Efficacy (lm/W)	Input Power (W)	
1' × 4'	23R/45L-35K8	1,019	36	28	5,140	105	49	80,000 / 36,000
	23R/45L-40K8	1,019	36	28	5,230	107	49	80,000 / 36,000
	23R/45L-50K8	1,019	36	28	5,439	111	49	80,000 / 36,000
	23R/67L-35K8	1,019	36	28	7,874	109	72	80,000 / 36,000
	23R/67L-40K8	1,019	36	28	8,011	111	72	80,000 / 36,000
	23R/67L-50K8	1,019	36	28	8,332	116	72	80,000 / 36,000
2' × 2'	23RD/45LD-35K8	1,021	36	28	5,461	111	49	80,000 / 36,000
	23RD/45LD-40K8	1,021	36	28	5,556	113	49	80,000 / 36,000
	23RD/45LD-50K8	1,021	36	28	5,779	118	49	80,000 / 36,000
	23RD/67L-35K8	1,021	36	28	8,365	116	72	80,000 / 36,000
	23RD/67L-40K8	1,021	36	28	8,511	118	72	80,000 / 36,000
	23RD/67L-50K8	1,021	36	28	8,852	123	72	80,000 / 36,000
2' × 4'	23RD/67L-35K8	1,171	53	22	9,171	127	72	80,000 / 36,000
	23RD/67L-40K8	1,171	53	22	9,331	130	72	80,000 / 36,000
	23RD/67L-50K8	1,171	53	22	9,704	135	72	80,000 / 36,000
	23RD/90L-35K8	1,171	53	22	11,784	121	98	60,000 / 36,000
	23RD/90L-40K8	1,171	53	22	11,990	124	98	60,000 / 36,000
	23RD/90L-50K8	1,171	53	22	12,470	129	98	60,000 / 36,000
	23RD/135L-35K8	1,171	53	22	16,705	114	147	60,000 / 36,000
	23RD/135L-40K8	1,171	53	22	16,997	116	147	60,000 / 36,000
	23RD/135L-50K8	1,171	53	22	17,677	120	147	60,000 / 36,000

Red LED

Size	Lamp Type	Initial Delivered Lumens		Input Power Red (W)	Estd. L ₇₀ LED Life (hrs)
		Red Lamp @ 25°C (lm)	Efficacy - Red (lm/W)		
1' × 4'	23R	954	34	28	36,000
2' × 2'	23RD	1,021	36	28	36,000
2' × 4'	46R	2,042	36	56	36,000

Subject to change without notice. Visit www.kenall.com for .ies files and additional information

Spectroradiometric Parameters



Purity: 1.0
 UV: 0.0000% (<390nm)
 Radiant Flux < 575nm: 0.000%
 Bandwidth: 16nm
 Peak Wavelength: 630nm



www.kenall.com | P: 800-4-Kenall | F: 262-891-9701 | 10200 55th Street Kenosha, Wisconsin 53144, USA

A brand of **legrand**

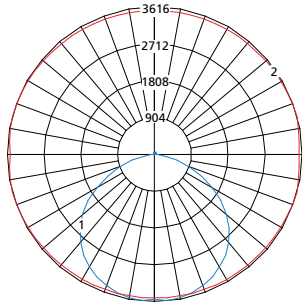
This product complies with the Buy American Act: manufactured in the United States with more than 50% of the component cost of US origin. It may be covered by patents found at www.kenall.com/patents. Content of specification sheets is subject to change; please consult www.kenall.com for current product details. ©2019 Kenall Mfg. Co.

SIMPLESEAL™

CSEDI SERIES – TECHNICAL DATA

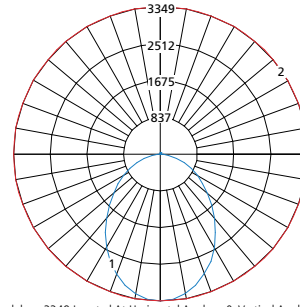
PERFORMANCE

Model: CSEDI14-23R/67L-40K8-DIM1-120-2F-2H-SYM (White Mode)



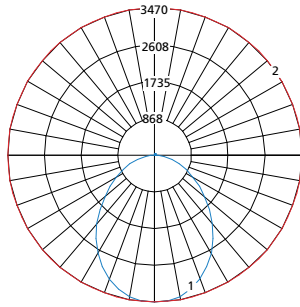
Maximum Candela = 3616 Located At Horizontal Angle = 15, Vertical Angle = 5
 1 - Vertical Plane Through Horizontal Angles (15-195) (Through Max. Cd.)
 2 - Horizontal Cone Through Vertical Angle (5) (Through Max. Cd.)

Model: CSEDI22-23RD/67L-40K8-DIM1-120-2F-2H-SYM (White Mode)



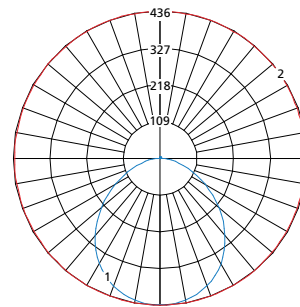
Maximum Candela = 3349 Located At Horizontal Angle = 0, Vertical Angle = 0
 1 - Vertical Plane Through Horizontal Angles (0-180) (Through Max. Cd.)
 2 - Horizontal Cone Through Vertical Angle (0) (Through Max. Cd.)

Model: CSEDI24-23RD/67L-40K8-DIM1-120-2F-2H-SYM (White Mode)



Maximum Candela = 3470 Located At Horizontal Angle = 0, Vertical Angle = 0
 1 - Vertical Plane Through Horizontal Angles (0-180) (Through Max. Cd.)
 2 - Horizontal Cone Through Vertical Angle (0) (Through Max. Cd.)

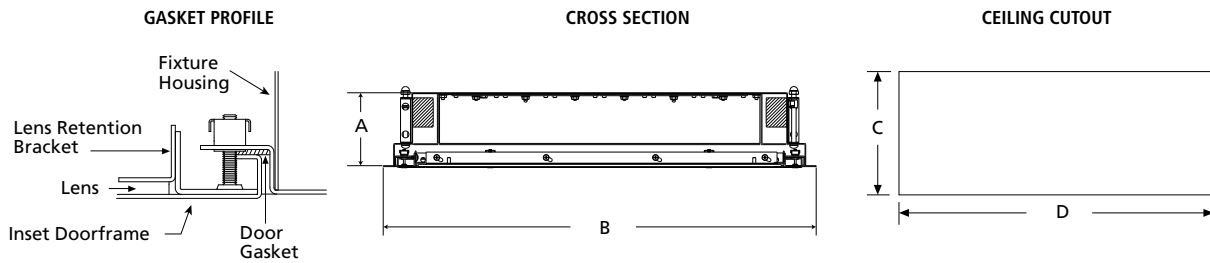
Model: CSEDI24-23RD/67L-40K8-DIM1-120-2F-2H-SYM (Red Mode)*



Maximum Candela = 436 Located At Horizontal Angle = 75, Vertical Angle = 2.5
 1 - Vertical Plane Through Horizontal Angles (75-255) (Through Max. Cd.)
 2 - Horizontal Cone Through Vertical Angle (2.5) (Through Max. Cd.)

*Luminous intensity of "red" mode is equal across all product sizes

DIMENSIONAL DATA



DIMENSIONAL DATA (IN INCHES)

	A	B	C	D
1x4	4.20	11.75 x 47.75	10.85	46.85
2x2	4.20	23.75 x 23.75	22.85	22.85
2x4	4.20	23.75 x 47.75	22.85	46.85

* Add .375" to ceiling cut out dimensions when IF Option is specified

** Height is 5.875" with LEL option



www.kenall.com | P: 800-4-Kenall | F: 262-891-9701 | 10200 55th Street Kenosha, Wisconsin 53144, USA

This product complies with the Buy American Act: manufactured in the United States with more than 50% of the component cost of US origin. It may be covered by patents found at www.kenall.com/patents. Content of specification sheets is subject to change; please consult www.kenall.com for current product details. ©2019 Kenall Mfg. Co.

A brand of **Legrand**