

MIGHTY MAC™

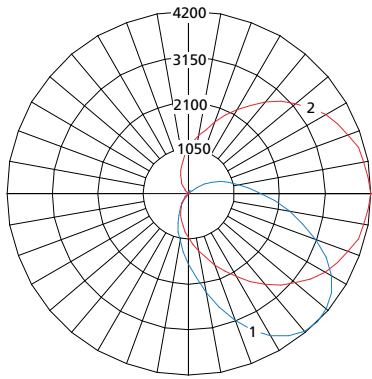
CD SERIES

PERFORMANCE

Model	Lamp Type	Initial Delivered Lumens		Input Power (W)	Drive Current (mA)	Estd. L70 LED Life (Hrs)
		@ 25°C	Efficacy (lm/W)			
CD-2	25L35K	2,217	78	28	117	80,000
	25L40K	2,364	83	28	117	80,000
	25L50K	2,458	87	28	117	80,000
CD-4	45L35K	4,198	91	46	100	80,000
	45L40K	4,341	94	46	100	80,000
	45L50K	4,519	97	46	100	80,000
	67L35K	6,703	90	74	75	80,000
	67L40K	6,932	93	74	75	80,000
	67L50K	7,216	97	74	75	80,000
	90L35K	8,278	86	97	100	80,000
	90L40K	8,560	88	97	100	80,000
	90L50K	8,911	92	97	100	80,000

NOTE: All products tested with SYM/B lens configuration. See "Lumen Output Scaling Factor" table for output values with alternate lens configurations. Information subject to change without notice. Visit www.kenall.com for IES files and additional information.

Model: CD-4-x-y-90L40K-DCC-z-SYM-B-1



Maximum Candela = 4200 Located At Horizontal Angle = 0, Vertical Angle = 45

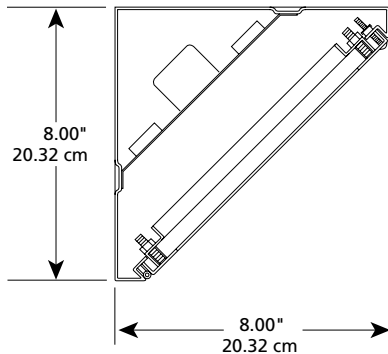
- 1 - Vertical Plane Through Horizontal Angles (0-180) (Through Max. Cd.)
- 2 - Horizontal Cone Through Vertical Angle (45) (Through Max. Cd.)

LUMEN OUTPUT SCALING FACTORS

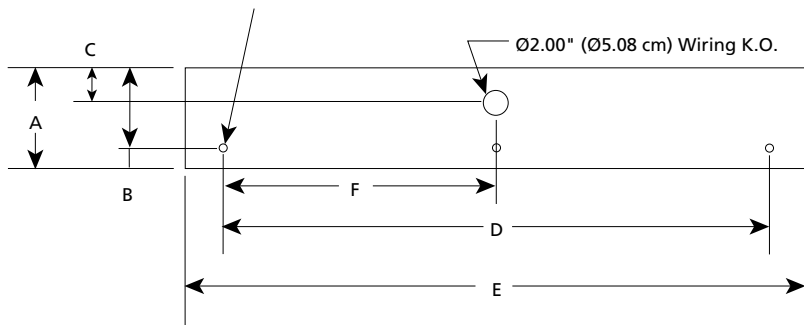
Lens Configuration	Inner Lens	Outer Lens	Scaling Factor
SYM/G	1/8" Frost Acrylic	1/8" Clear PC	1.10
SYM/7		3/16" Clear PC	1.06
SYM/8		3/16" Clear TG	1.06
SYM/9		1/4" Clear PC	1.03
SYM/B		3/8" Clear PC	1.00
SYM/C		3/8" Clear TG	1.03
SYM/J		1/2" Clear PC	0.99
1/G	1/8" Prismatic Acrylic	1/8" Clear PC	1.04
1/9		1/4" Clear PC	0.99
1/B		3/8" Clear PC	0.99
2/J	1/8" Prismatic PC	1/2" Clear PC	0.87

NOTE: Use this table to determine the lumen output and efficacy of the desired lens configuration by multiplying the provided value with the appropriate number in the "Performance" table above.

DIMENSIONAL DATA



CD2 – (4) .62" (1.57 cm) Mounting Holes
 CD4 – (6) .62" (1.57 cm) Mounting Holes



DIMENSIONAL DATA (IN INCHES/CM)

	A	B	C	D	E	F
CD2	8.00/20.32	6.43/16.33	2.75/6.99	19.50/49.53	25.37/64.44	—
CD4	8.00/20.32	6.43/16.33	2.75/6.99	43.50/110	49.37/125	21.75/55.25



www.kenall.com | P: 800-4-Kenall | F: 262-891-9701 | 10200 55th Street Kenosha, Wisconsin 53144, USA

A brand of **legrand**

This product complies with the Buy American Act: manufactured in the United States with more than 50% of the component cost of US origin. It may be covered by patents found at www.kenall.com/patents. Content of specification sheets is subject to change; please consult www.kenall.com for current product details. ©2019 Kenall Mfg. Co.