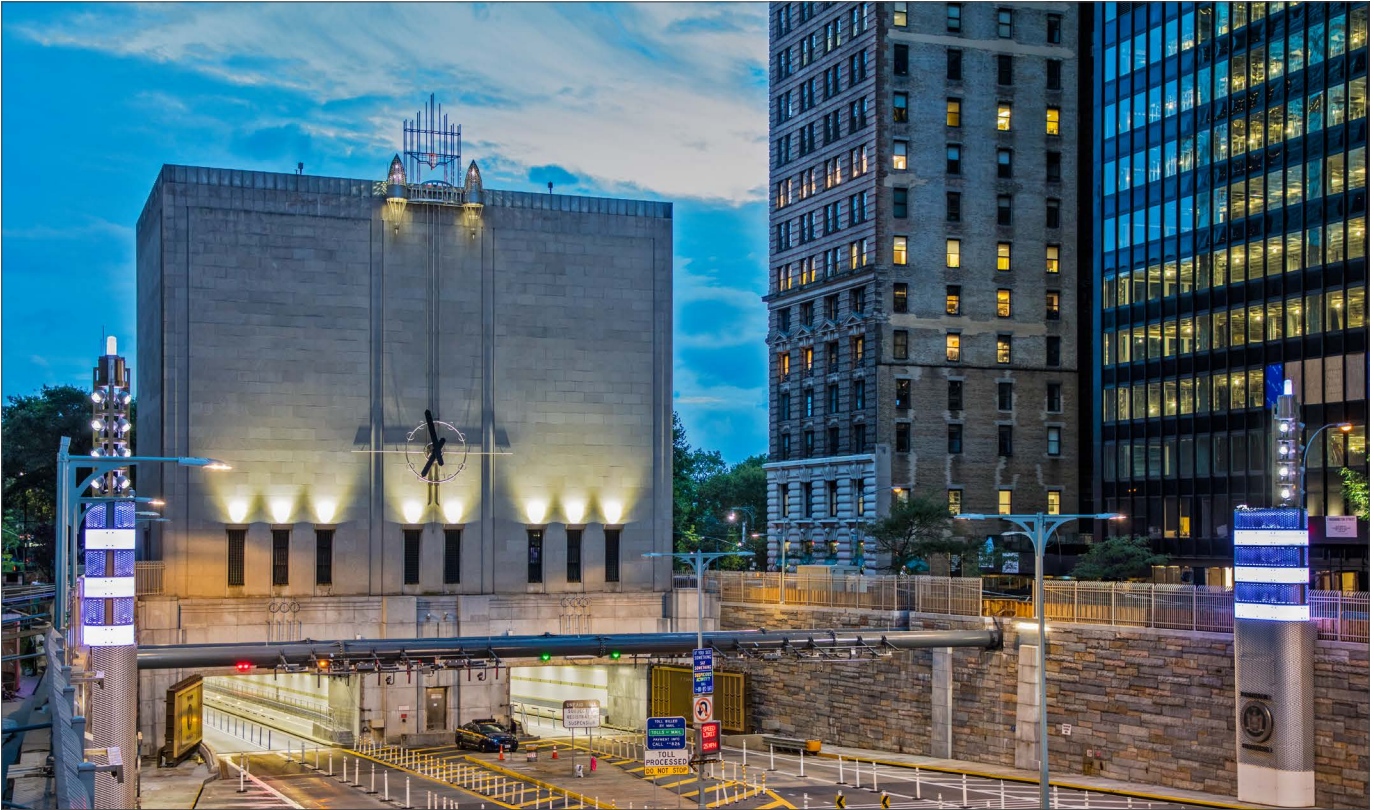


Kenall's LuxTran LTSI-A1

Tunnel Luminaire Delivers High Lumens in a Compact Size



Contact Michael Maltezos
at 847-507-4531 or
Mmaltezos@kenall.com
to assist you with your next
tunnel project.

From the Hugh M. Cary Tunnel in Brooklyn, to the San Ysidro Land Port of Entry, Kenall's LuxTran lighting illuminates tunnels and underpasses across the United States.

Joining this distinguished family of sealed lights is the new LTSI-A1, an IP-rated, stainless steel fixture that produces high lumens with a smaller footprint, providing additional flexibility for complicated tunnel lighting layouts.

The LTSI-A1 is a compact 22" x 22" with five distribution options and can be mounted on either walls or ceilings to provide supplemental lighting in various tunnel zones. It has an IP-66 rating and a range of lumen packages to suit the needs of your tunnel or underpass project.

LuxTran LTSI-A1 Series

- Delivered lumen range: 11,578 – 40,321 lm
- Input power range: 97 – 330W
- Lumens per watt: 97 – 151lm/W
- 16 gauge Type 304 or 316 stainless steel enclosure
- Marine-grade aluminum heat sink
- Powered by integral driver

Nominal size: | 22" x 22"
Installation types: | wall or ceiling mount

