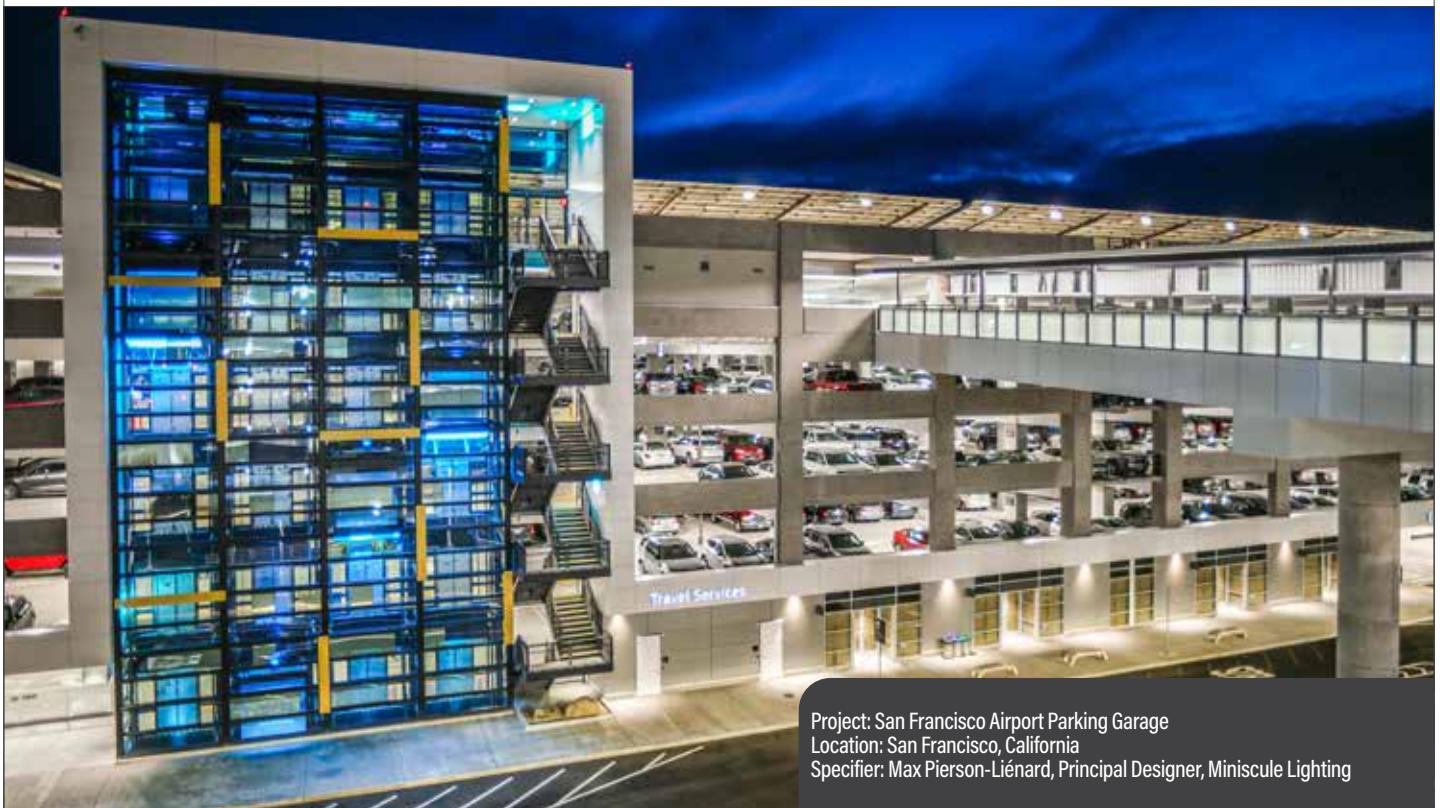


SenScape SPG18 Luminaires Help Award-Winning SFO Parking Structure Achieve Zero Net Energy



Project: San Francisco Airport Parking Garage
 Location: San Francisco, California
 Specifier: Max Pierson-Liénard, Principal Designer, Miniscule Lighting

“For many visitors, the garage is the first and last impression of their travel journey. We think all of this adds up to a different, maybe slightly more thoughtful parking experience.”

— Max Pierson-Liénard, Principal Designer, Miniscule Lighting



Project Summary: San Francisco long-term parking garage 2 is a 1.2 million sq. ft. structure designed to be Zero Net Energy (ZNE+), in accordance with the California Energy Efficiency Strategic Plan. Employing the latest technologies including lighting and controls, the 3,600 space structure doubles SFO’s long-term parking capacity and is expected to generate a 287% energy surplus.

Challenge: Install controls-agnostic, high efficiency, high efficacy luminaires that could be delivered on time and within budget

Solution: SenScape SPG18 LED luminaires

Benefits:

- Industry-leading upright light improves contrast ratios and aesthetic appeal
- High degree of uniformity and glare control
- Controls-agnostic design allows design flexibility

Lighting “A Big Part of the Story” as SFO Aims to Become First Zero Net Energy Airport in the World

Called “the best parking garage I’ve ever seen”¹ by a judge for Engineering News Record-California’s Best Projects 2019, the San Francisco Airport Long-term Parking Garage² incorporates innovative technology to enhance the customer experience, while still meeting strict California energy codes. Advancements include automated parking guidance; an access- and revenue-control system for reserved parking; car location service via paystations and Wi-Fi access throughout the structure. There are electric charging stations in 3% of the spaces, which the garage can expand to 20% as needed. Supporting all these features are rooftop solar panels that not only power the structure, but other SFO facilities.

Working with Associated Lighting Representatives (ALR), Max Pierson-Liénard of Miniscule Lighting sought luminaires that would prioritize user experience at the new state-of-the-art parking facility. “Of course, even on a ZNE+ project there’s a lot more to good lighting design than just delivering the lowest possible energy consumption. Lighting design is always an integrative process which attempts to reconcile a multitude of different and often contradictory requirements. It’s important to stay focused on the end user experience though the entire design process.” he stated in his project summary at www.miniscule.lighting.



With ALR’s help, Pierson-Liénard selected SenScape SPG18 luminaires, stating that, “the general garage lighting fixtures incorporate an uplight component, which improves contrast ratios and overall appeal of the facility.” Indeed, the photos show lighting that is bright and attractive – a welcome feature in a city struggling with crime and security issues at other metropolitan garages².

The structure has won almost a dozen awards, including:

- Best Design of a Parking Facility, 2020 International Parking and Mobility Institute
- Award of Excellence 2020, IES Illumination
- Partnered Project of the Year 2020, International Partnering Institute
- California Engineering Excellence Merit Award 2020, American Council of Engineering
- Airports & Ports Project of the Year 2019, American Society of Civil Engineers

Most importantly, a holiday travel announcement in December of 2021 declared all SFO parking structures were “at capacity”, even though holiday travel was only at 60-65% of pre-pandemic levels — indicating that customers have embraced the new facility. Concluded Pierson-Liénard, “For many visitors, the garage is the first and last impression of their travel journey. We think all of this adds up to a different, maybe slightly more thoughtful parking experience.”



SPG18 Features:

- Embedded image sensor provides car counting
- Textured tertiary lens for glare reduction and up-light feature to eliminate “cave-effect”
- Outputs ranging from 3,047 lm to 13,680 lm
- Can be paired with Kenall’s exclusive TekLink™ lighting control technology
- Compatible with third-party control systems
- 10 Year limited product warranty; option for Peace of Mind Guarantee®

¹ SFO Long-Term Parking Garage 2: Airport/Transit | 2019-09-30 | Engineering News-Record (enr.com)

² Breaking Point: SF Suffers Highest Rate of Car Break-Ins Compared to Atlanta, DC, Dallas, LA – NBC Bay Area



For more information, please visit us on the web at www.kenall.com



www.kenall.com

P: 800-4-Kenall

F: 262-891-9701

10200 55th Street Kenosha, Wisconsin 53144

A brand of Legrand

This product may be covered by patents found at www.kenall.com/patents. Content of specification sheets is subject to change; please consult www.kenall.com for current product details.
© 2022 Kenall Mfg. Co. All rights reserved.