

Specification Grade Sealed Downlights

for Your Most Challenging Applications

Sealed Specification
Grade Downlight
Luminaires

DL



Now includes
Tunable White LED

The Downlights You Need to Seal Any Deal

Avoid the headache of downlights that don't live up to your demanding applications. Kenall's modular downlights are designed to stay tightly sealed and perform efficiently for years in a variety of environments, including areas where damp and wet location listings just aren't enough.

One simple, modular design accommodates both regressed and flush lens trim options, and Ingress Protection is an integral part of the design — so there are no surprise upcharges.

Now available with Tunable White LED and Indigo-Clean® technologies, Kenall's downlights are tailored to fit the needs of the most challenging applications, including hospitals and clinics, behavioral health facilities, cleanrooms, containment areas, food and pharmaceutical processing areas, transportation, transit and other public spaces, military installations and educational facilities.

Table of Contents

Construction	4
Technology Options	5
New! Tunable White Technology	5
Indigo-Clean and ICT	6
Sealed Regressed Lens Downlights	8
Sealed Flush Lens Downlights	16
Buy American Act	24
Listings and Testing	25
Kenall Markets	26



Healthcare



High Abuse



Transportation



Behavioral Health



Food Processing



Sealed Enclosure



When you see this logo treatment, it conveys Kenall's position as a market leader in the design of LED lighting and controls for challenging applications.

Avoid the Headache of Failed Seals... Specify Kenall Sealed Downlights



Cracked Lens



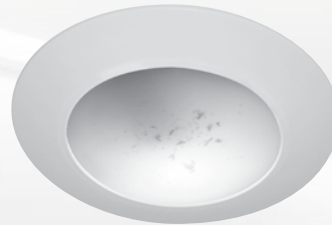
Ingress of Moisture



Ingress of Mold



Ingress of Dust



Ingress of Bugs



www.kenall.com | P: 800-4-Kenall | F: 262-891-9701 | 10200 55th Street Kenosha, Wisconsin 53144

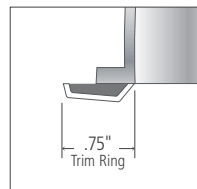
This product complies with the Buy American Act: manufactured in the United States with more than 50% of the component cost of US origin. It may be covered by patents found at www.kenall.com/patents. Content of specification sheets is subject to change; please consult www.kenall.com for current product details.

One Simple Modular Design, Two Lens Types

The Flexibility You Need with **NO** Hidden Costs

The modular design of these downlights incorporates Ingress Protection at no additional cost and, for specific applications, can be specified with either regressed or flush lenses. Then your downlights ship in two phases. The result? Your lighting project is completed on time and within budget.

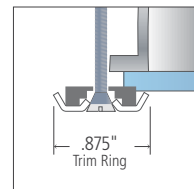
Sealed Regressed Lens



Trim Detail

Kenall's sealed, regressed lens downlight features a narrow trim ring, which makes it ideal for architectural applications that value a sealed fixture while providing ample illumination and reduced glare. The fixture is ideal for healthcare facilities, restaurants and commercial kitchens.

Sealed Flush Lens



Trim Detail

Kenall's flush lens downlight is designed for extreme environments, including those where accidental damage or vandalism are common. The fixture is ideal for behavioral health facilities, schools and public spaces, canopies and soffits.

Two-Phase Shipping, Easy Installation.

This downlight series ships in two phases. The rough-in frame can be installed first and is designed to fit various ceiling thicknessness. Then the trim housing section can be installed once the ceiling is finished; torsion springs or captive fasteners provide a positive seal to the ceiling surface.



Tune Your Lighting to Your Needs

What Is Tunable White Technology?

Tunable white technology enables the user to independently control both color temperature and intensity of light within a given application. This provides the ability to change the color of light from warm to neutral to cool in appearance, over time, based on the needs of the occupant or the space.

Recent studies on health, productivity and comfort suggest that the ability to tune the color temperature of light based on application, event need, or occupant preference yields significant benefits.

Kenall combines our white color tuning with dimming to provide even greater flexibility in adjusting the ambience of these spaces:

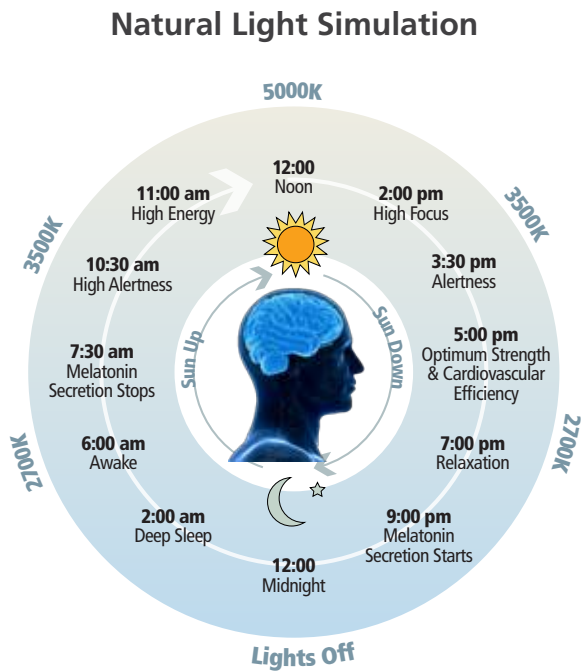
- Healthcare
- Education
- Cleanroom & Containment
- Correctional
- High Abuse
- Behavioral Health

Controls

The key to achieving the perfect balance of color and intensity of light is the use of appropriate controls. Kenall offers a choice of 0-10V Dimming or Digital Addressable Lighting Interface (DALI), for more sophisticated capabilities. Both options provide the ability to interface with your choice of building automation systems. For your convenience, Kenall's tunable white products are compatible with a wide range of controls; from the simpler Pico and EcoSystems® to the more sophisticated Fresco™ system. Consult factory regarding specific controls compatibility.

The Primary Benefit of Tunable Lighting: Circadian Entrainment

Scientific studies have shown that when indoor light mimics the warm-to-cool cycle of natural daylight, people receive a number of benefits, including a more restful night's sleep and greater alertness during the day. This circadian entrainment is especially beneficial for those who do not have access to natural daylight, such as shift workers, office workers, hospital and nursing home patients, and correctional inmates.



This icon indicates that the luminaire can be specified with Tunable white technology.

Kill *C.diff* and Prevent It From Spreading

Indigo-Clean® MDLIC6 is a dual-mode luminaire utilizing a dual-technology occupancy sensor that provides an effortless transition between white ambient mode when the room is in use, and Indigo disinfection mode when the room is not. MDLIC6 provides clinical grade control of *C.diff** and is ideal for patient bathrooms, helping to prevent harmful bacteria from spreading to the patient room.

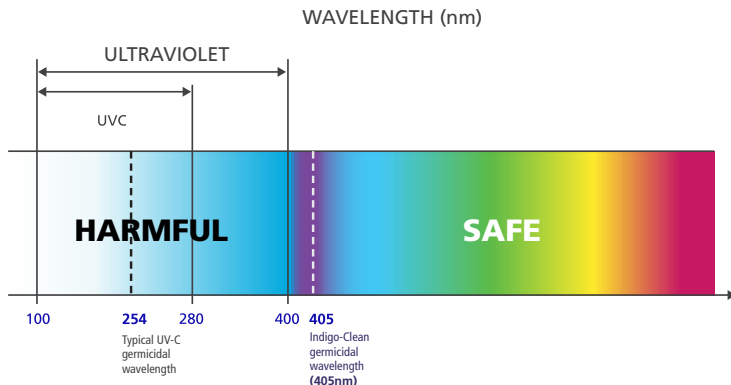


How Indigo-Clean Works

- The 405nm light targets bacteria and produces intracellular Reactive Oxygen Species (ROS).
- Similar to bleach, these ROS kill the bacteria and prevent it from repopulating the space.
- The 405nm light emitted from Indigo-Clean Technology reflects off of walls and surfaces.



Visible light spectrum showing the active element in Indigo-Clean



MDLIC6 switches to white disinfection mode when the room is occupied.

*Antimicrobial Activity of a Continuous Visible Light Disinfection System by Rutala, et. al, ID Week 2016. Contact manufacturer for additional claim information.
 ** SGS Lab Report# - 09517053798. Contact manufacturer for a copy of this report.



Create a Cleaner, Safer Facility with On-Demand Environmental Disinfection

Kenall's sealed downlight series offers several options tailored to your space, including the ability to add Indigo-Clean Technology, a patented, state-of-the-art technology that safely kills harmful bacteria such as Staph*, including MRSA**. This revolutionary new technology combines white light with 405nm indigo light to provide on-demand disinfection with the flip of your lighting switch.



This icon indicates that the luminaire can be specified with the Indigo-Clean Technology option.

* Per independent lab report #5G5-09S16076094. Contact manufacturer for a copy of this report.

** Antimicrobial Activity of a Continuous Visible Light Disinfection System by Rutala, et. al, ID Week 2016.

Which Product Should I Choose?

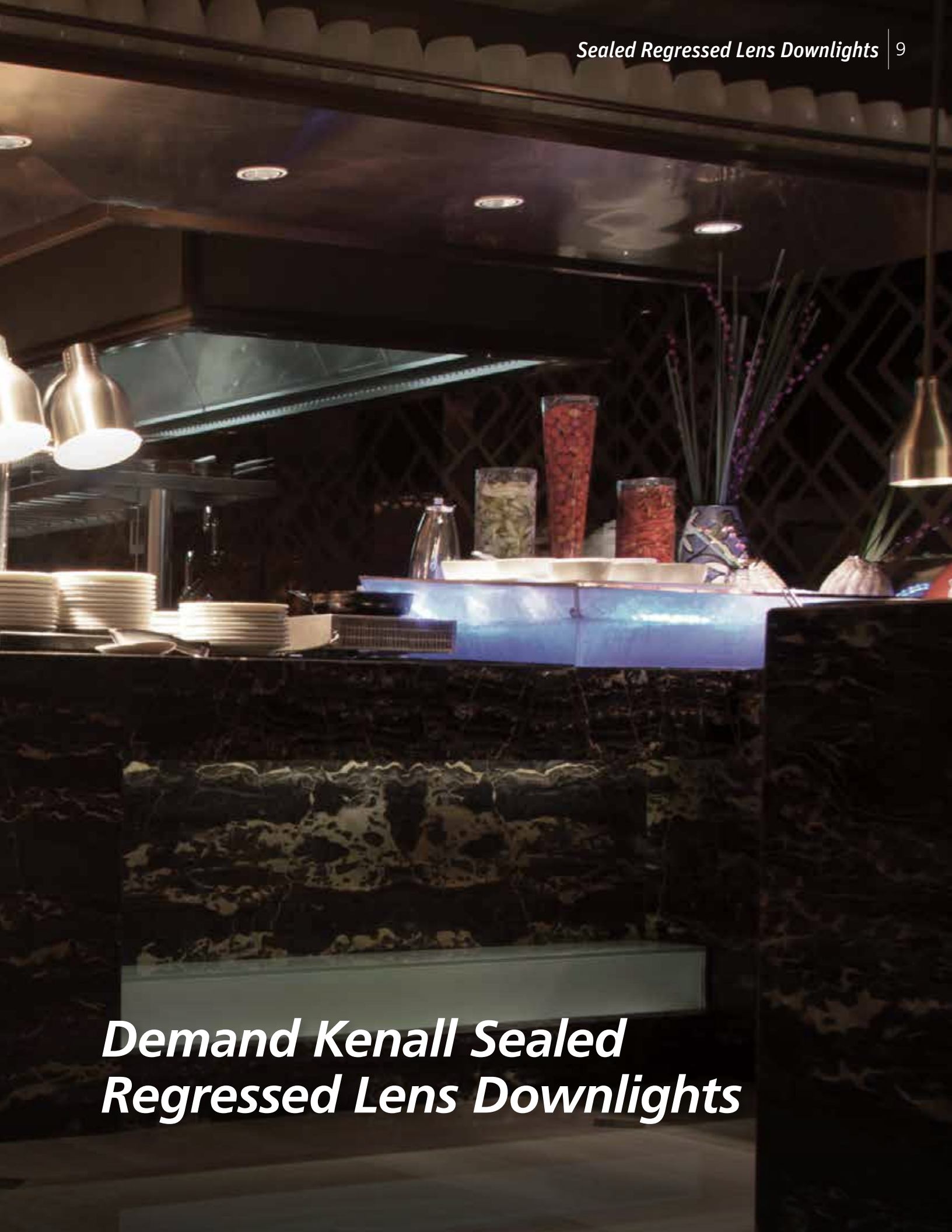
Indigo-Clean Continuous Environmental Disinfection	ICT Indigo-Clean Technology
Continuous Environmental Disinfection that provides ambient light in blended white mode	LED luminaires that use Indigo-Clean Technology to provide on-demand disinfection
Dual mode: indigo-only and blended indigo and white LED	Single mode: blended white LED
Designed for use in acute patient-care areas of healthcare facilities	Designed for use in a wide variety of applications



www.kenall.com | P: 800-4-Kenall | F: 262-891-9701 | 10200 55th Street Kenosha, Wisconsin 53144

This product complies with the Buy American Act: manufactured in the United States with more than 50% of the component cost of US origin. It may be covered by patents found at www.kenall.com/patents. Content of specification sheets is subject to change; please consult www.kenall.com for current product details.

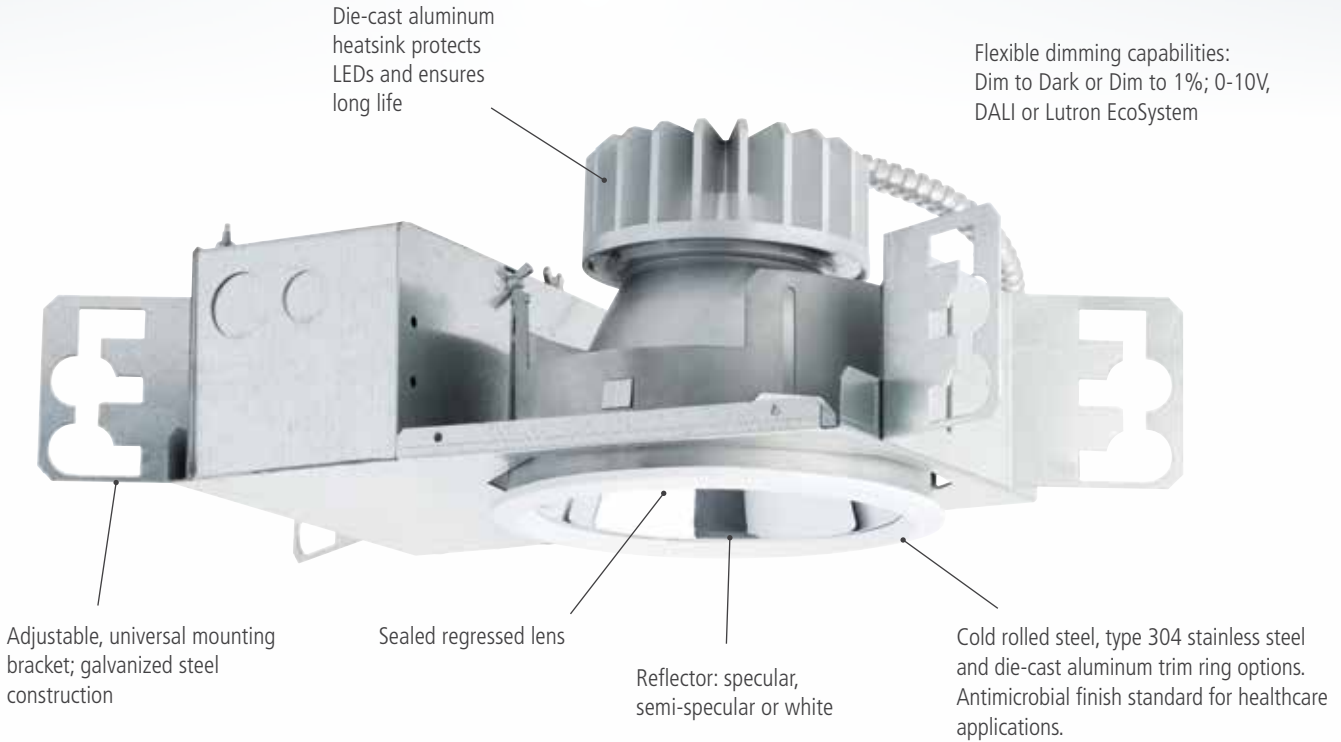
For Environments where Ingress Protection Really Matters....



***Demand Kenall Sealed
Regressed Lens Downlights***

Expertly Designed with Kenall's Signature Features

Kenall's streamlined downlight design includes many of the signature Kenall features you've come to rely on to make installation and maintenance fast and easy, while also ensuring a long LED life.



Suggested Applications



Healthcare



Food Service



Commercial Kitchens



Providing Exceptional Performance

Regressed Lens - Performance Data

Optic		Lamp Power	Initial Delivered Lumens, By Lamp Color							Efficacy (lm/W)	Input Power (W)	Estd. L70 LED Life (hrs)
Distribution	Reflector Finish		30K8	30K9	35K8	35K9	40K8	40K9	50K8			
W	CS	12L	1,233	1,031	1,233	1,043	1,282	1,043	1,310	70 - 90	15	80,000
		22L	2,018	1,688	2,018	1,708	2,099	1,708	2,144	70 - 89	24	85,000
		33L	2,924	2,445	2,924	2,475	3,041	2,475	3,107	70 - 89	35	70,000
		55L	5,217	4,362	5,217	4,415	5,425	4,415	5,543	70 - 89	62	75,000
	CSS	12L	1,085	907	1,085	918	1,128	918	1,152	62 - 79	15	80,000
		22L	1,776	1,485	1,776	1,503	1,847	1,503	1,887	62 - 79	24	85,000
		33L	2,573	2,152	2,573	2,178	2,676	2,178	2,734	61 - 78	35	70,000
		55L	4,590	3,838	4,590	3,885	4,774	3,885	4,877	62 - 79	62	75,000
	FW	12L	1,176	984	1,176	995	1,223	995	1,250	67 - 85	15	80,000
		22L	1,926	1,610	1,926	1,630	2,003	1,630	2,046	67 - 85	24	85,000
		33L	2,790	2,333	2,790	2,362	2,902	2,362	2,965	67 - 85	35	70,000
		55L	4,978	4,163	4,978	4,213	5,177	4,213	5,289	67 - 85	62	75,000

Sample Ordering Information

(EX: MDL6-R-2FW-22L-40K8-W-CSS-T-RIG6-DV-DIM1)

TRIM

Model Trim Style Trim Finish Lamp Power Lamp Color Distribution Reflector Finish Flush Lens Type

MDL6

Trim Style

R Regressed Lens (IP64)
NF Flush Lens (Without Fasteners - IP64)
FF Flush Lens (With Fasteners - IP65)

Trim Finish

DCFW Die-Cast Aluminum in Flat White (R and NF Trim Style)
2FW Cold-Rolled Steel in Flat White
5BR Type 304 Stainless Steel with 4B Brushed Finish

Lamp Power

12L 12 Watt LED
22L 22 Watt LED
33L 33 Watt LED
55L† 55 Watt LED

Lamp Color

30K8 3000K / 80 CRI min.
30K9 3000K / 90 CRI min.
35K8 3500K / 80 CRI min.
35K9 3500K / 90 CRI min.
40K8 4000K / 80 CRI min.
40K9 4000K / 90 CRI min.
50K8 5000K / 80 CRI min.

Distribution

M Medium
W Wide
WW* Wall Wash

Reflector Finish

FW Flat White
CS Clear Specular
CSS Clear Semi-Specular

Flush Lens Type (n/a Regressed Trim Style)

T 1/8" Clear High-Impact Acrylic

ROUGH-IN

Rough-In Input Voltage Driver Type Options

RIG6

Rough-In

RIG6 6" Rough-In

Input Voltage

DV 120-277V, 50/60Hz
347† 347VAC, 60Hz

Driver Type

DIM1 0-10V Dimming to 1%
DALI DALI Dimming to 1%
ECO1 Lutron EcoSystem®

Options

LEL Emergency Battery Backup with Remote Test Switch
FS Fuse & Holder
CCEA CCEA Approved

* Available with CSS reflector finish only

† N/A with DALI or ECO1 Driver Type. N/A with LEL option

▲ Must be installed with a minimum 24" on-center spacing, 12" from wall, and have 3" clearance above the Trim/Housing



MedMaster™ 6" Regressed Downlights...



MedMaster™ M4DL6 for Surgical Suites

- Delivered lumen range: 880–5,543 lm
- Input Power: 15–62W
- CCT: 3000K, 3,500K, 4,000K, 5,000K
- CRI: 80 or 90
- Conductive emissions controlled per MIL-STD-461F
- Aluminum, stainless or cold-rolled steel trim ring
- Available with Indigo-Clean Technology



Indigo-Clean™



Indigo-Clean® MDLIC6 Downlight

Switchable: White Ambient Mode and Indigo Disinfection Mode

- Delivered lumen range: 1,515–2,050 lm
- Input power: 29–40W
- CCT: 3000K, 3500K, 4000K, 5000K
- Continuous environmental disinfection
- Sporicidal - Proven to kill 70% of *C.diff* in 24 hrs.**
- Provided IC75 occupancy sensor switches automatically to max disinfection mode when room is unoccupied
- High performance LEDs deliver high visual acuity



** SGS Lab Report# - 09517053798. Contact manufacturer for a copy of this report.

...for Healthcare Applications



MedMaster™ MRIDL6 for MRI Suites

- Delivered lumen range: 655–2,953 lm
- Input Power: 16–37W
- CCT: 3000K, 3500K, 4000K, 5000K
- CRI: 80 or 90
- Non-ferrous construction
- 24V DC
- RF-EMI emissions compliant



MedMaster™ MDL6 for Healthcare Environments

- Delivered lumen range: 768–5,543 lm
- Input Power: 15–62W
- CCT: 3000K, 3500K, 4000K, 5000K
- CRI: 80 or 90
- Die-cast aluminum, cold-rolled steel or stainless steel trim ring
- Wall-wash option
- Available with Indigo-Clean Technology & Tunable White Technology



EnviroPro™ 6" Regressed Lens Downlight for Food Processing



EnviroPro™ EPDL6 for Food Processing

- Delivered lumen range: 880–5,543 lm
- Input Power: 15–62W
- CCT: 3000K, 3500K, 4000K, 5000K
- CRI: 80 or 90
- Stainless steel trim ring
- Wall-wash option



www.kenall.com | P: 800-4-Kenall | F: 262-891-9701 | 10200 55th Street Kenosha, Wisconsin 53144

This product complies with the Buy American Act: manufactured in the United States with more than 50% of the component cost of US origin. It may be covered by patents found at www.kenall.com/patents. Content of specification sheets is subject to change; please consult www.kenall.com for current product details.

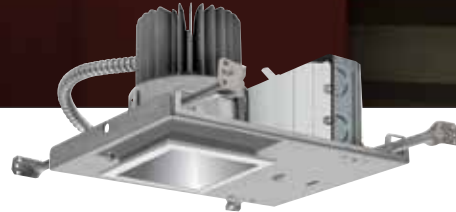
MedMaster 4" Sealed Downlights for Healthcare Applications

Kenall's 4" downlights provide a targeted design aesthetic with your choice of a smaller round or square aperture. Their tighter beam spread is ideal to highlight task areas, as a chart light, or for use over a nurses' station.



MedMaster™ MDL4 for Healthcare Environments

- Delivered lumen range: 983–2,536 lm
- Input Power: 16–31W
- CCT: 3000K, 3500K, 4000K, 5000K
- CRI: 80, 90
- Available with Indigo-Clean Technology & Tunable White Technology



MedMaster MDL4S for Healthcare Environments

- Delivered lumen range: 1,046–2,640 lm
- Input Power: 16–31W
- CCT: 3000K, 3500K, 4000K, 5000K
- CRI: 80, 90
- Available with Indigo-Clean Technology & Tunable White Technology



MedMaster M4DL4 for Surgical Suites

- Delivered lumen range: 983–2,536 lm
- Input Power: 16–31W
- CCT: 3000K, 3500K, 4000K, 5000K
- CRI: 80, 90
- Available with Indigo-Clean Technology & Tunable White Technology



MedMaster M4DL4S for Surgical Suites

- Delivered lumen range: 1,046–2,640 lm
- Input Power: 16–31W
- CCT: 3000K, 3500K, 4000K, 5000K
- CRI: 80, 90
- Available with Indigo-Clean Technology & Tunable White Technology



MedMaster MRIDL4 for MRI Suites

- Delivered lumen range: 930–1310 lm
- Input Power: 15W
- CCT: 3000K, 3500K, 4000K, 5000K
- CRI: 80, 90



MedMaster MRIDL4S for MRI Suites

- Delivered lumen range: 990–1,357 lm
- Input Power: 15W
- CCT: 3000K, 3500K, 4000K, 5000K
- CRI: 80, 90



When Damp or Wet Location Fixtures Simply Aren't Enough



Service toward South/Central or Harlem/Lake
Green Line #015 to
Harlem/Lake 16 min

i   **Transit information**

Green Line
South/Central
Station Timetable



Pink Line
Morgan
Station Timetable



No Smoking

Customer Alert



Demand Kenall Sealed Flush Lens Downlights



Enter here for trains

Transit information

cta STATION ELEVATOR S
The following elevators are out of

Today's date:
Last updated:

- Red Line
- Orange Line
- Yellow Line
- Green Line
- Blue Line
- Purple Line
- Pink Line
- Brown Line
- Loop Elevated

Transit information:

1-800-468-7900

Flush Lens Downlights, Designed for Performance and Long Life

With features that include sealed lenses and stainless steel or anti-microbial finished trim rings, Kenall's flush lens, sealed downlight series has been designed to provide protection from contaminants while also withstanding rigorous cleaning protocols.



SELECT MODELS ONLY



Die-cast aluminum heatsink protects LEDs and provides long life

Flexible 0-10V dimming capabilities: Dim to Dark or Dim to 1%; DALI or Lutron EcoSystem



Adjustable, universal mounting bracket

Reflector: specular, semi-specular or white

Cold rolled steel, Type 304 or 316 stainless steel and die-cast aluminum trim ring options. Antimicrobial finish standard for healthcare applications.

Suggested Applications



Healthcare



High Abuse



Transportation



Behaviorial Health



Food Processing



Sealed Enclosure



www.kenall.com | P: 800-4-Kenall | F: 262-891-9701 | 10200 55th Street Kenosha, Wisconsin 53144

This product complies with the Buy American Act: manufactured in the United States with more than 50% of the component cost of US origin. It may be covered by patents found at www.kenall.com/patents. Content of specification sheets is subject to change; please consult www.kenall.com for current product details.

Providing Exceptional Performance

Flush Lens - Performance Data

Distribution	Optic		Lamp Power	Initial Delivered Lumens, By Lamp Color							Efficacy (lm/W)	Input Power (W)	Estd. L70 LED Life (hrs)
	Reflector Finish	Lens Type		30K8	30K9	35K8	35K9	40K8	40K9	50K8			
W	CS	T	12L	1,153	964	1,153	976	1,199	976	1,225	66 - 84	15	80,000
			22L	1,888	1,578	1,888	1,597	1,963	1,597	2,006	66 - 84	24	85,000
			33L	2,735	2,287	2,735	2,314	2,844	2,314	2,906	65 - 83	35	70,000
			55L	4,879	4,079	4,879	4,129	5,074	4,129	5,184	66 - 84	62	75,000
		G	12L	1,180	986	1,180	998	1,227	998	1,253	67 - 86	15	80,000
			22L	1,932	1,615	1,932	1,635	2,009	1,635	2,052	67 - 86	24	85,000
			33L	2,799	2,340	2,799	2,369	2,911	2,369	2,974	67 - 85	35	70,000
			55L	4,993	4,175	4,993	4,225	5,193	4,225	5,305	67 - 86	62	75,000
	CSS	T	12L	978	818	978	828	1,017	828	1,039	56 - 71	15	80,000
			22L	1,602	1,339	1,602	1,356	1,666	1,356	1,702	56 - 71	24	85,000
			33L	2,321	1,941	2,321	1,964	2,414	1,964	2,466	55 - 70	35	70,000
			55L	4,141	3,462	4,141	3,504	4,306	3,504	4,399	56 - 71	62	75,000
		G	12L	1,001	837	1,001	847	1,041	847	1,064	57 - 73	15	80,000
			22L	1,639	1,371	1,639	1,387	1,705	1,387	1,742	57 - 73	24	85,000
			33L	2,375	1,986	2,375	2,010	2,470	2,010	2,524	57 - 72	35	70,000
			55L	4,238	3,543	4,238	3,586	4,407	3,586	4,502	57 - 73	62	75,000
	FW	T	12L	1,084	906	1,084	917	1,127	917	1,152	62 - 79	15	80,000
			22L	1,775	1,484	1,775	1,502	1,846	1,502	1,886	62 - 79	24	85,000
			33L	2,572	2,150	2,572	2,176	2,675	2,176	2,732	61 - 78	35	70,000
			55L	4,588	3,836	4,588	3,883	4,771	3,883	4,875	62 - 79	62	75,000
		G	12L	1,109	928	1,109	939	1,154	939	1,179	63 - 81	15	80,000
			22L	1,817	1,519	1,817	1,537	1,889	1,537	1,930	63 - 80	24	85,000
			33L	2,632	2,201	2,632	2,227	2,737	2,227	2,796	63 - 80	35	70,000
			55L	4,695	3,926	4,695	3,974	4,883	3,974	4,989	63 - 80	62	75,000

Sample Ordering Information

(EX: EPDL6-FF-5FW-22L-40K8-W-CSS-T-RIG6-DV-DIM1)

TRIM

Model Trim Style Trim Finish Lamp Power Lamp Color Distribution Reflector Finish Flush Lens Type

EPDL6

Trim Style

R Regressed Lens (IP64)
FF Flush Lens (With Fasteners - IP65)
NF Flush Lens (Without Fasteners - IP64)

Trim Finish

DCFW Die-Cast Aluminum in Flat White (R and NF Trim Style)
5BR Type 304 Stainless Steel with 4B Brushed Finish
5FW Type 304 Stainless Steel in Flat White

Lamp Power

12L 12 Watt LED
22L 22 Watt LED
33L 33 Watt LED
55L*▲ 55 Watt LED

Lamp Color

30K8 3000K / 80 CRI min.
30K9 3000K / 90 CRI min.
35K8 3500K / 80 CRI min.
35K9 3500K / 90 CRI min.
40K8 4000K / 80 CRI min.
40K9 4000K / 90 CRI min.
50K8 5000K / 80 CRI min.

Distribution

M Medium
W Wide

Reflector Finish

FW Flat White
CS Clear Specular
CSS Clear Semi-Specular

Flush Lens Type

T 1/8" Clear High-Impact Acrylic
G 1/8" Clear Polycarbonate

ROUGH-IN

Rough-In Input Voltage Driver Type Options

RIG6

Rough-In

RIG6 6" Rough-In

Input Voltage

DV 120-277V, 50/60Hz
347* 347VAC, 60Hz

Driver Type

DIM1 0-10V Dimming to 1%
DALI DALI Dimming to 1%
ECO1 Lutron EcoSystem®

Options

LEL Emergency Battery Backup with Remote Test Switch
FS Fuse & Holder
CCEA CCEA Approved

* N/A with DALI or ECO1 Driver Type. N/A with LEL option
 ▲ Must be installed with a minimum 24" on-center spacing, 12" from wall, and have 3" clearance above the Trim/Housing



Kenall 6" Sealed, Flush Lens, Healthcare Downlights



www.kenall.com | P: 800-4-Kenall | F: 262-891-9701 | 10200 55th Street Kenosha, Wisconsin 53144

This product complies with the Buy American Act: manufactured in the United States with more than 50% of the component cost of US origin. It may be covered by patents found at www.kenall.com/patents. Content of specification sheets is subject to change; please consult www.kenall.com for current product details.



MedMaster™ M4DL6 for Surgical Suites

- Delivered lumen range: 794–5,184 lm
- Input Power: 15 – 62W
- CCT: 3000K, 3500K, 4000K, 5000K
- CRI: 80 or 90 min
- Conducted emissions controlled as per MIL-STD-461F
- Available with Indigo-Clean Technology



MedMaster™ MDL6 for Healthcare Environments

- Delivered lumen range: 697–5,184 lm
- Input Power: 15 – 62W
- CCT: 3000K, 3500K, 4000K, 5000K
- CRI: 80 or 90 min
- Wall-wash option
- Available with Indigo-Clean Technology & Tunable White Technology



Indigo-Clean® MDLIC6 Downlight

- Delivered lumen range: 1,384–1,873 lm
- Input Power: 29 – 40W
- CCT: 3000K, 3500K, 4000K, 5000K
- Continuous environmental disinfection
- NSF2 listing supports ease of cleanability



MedMaster™ MRIDL6 for MRI Suites

- Delivered lumen range: 591–2,624 lm
- Input Power: 16 – 37W
- CCT: 3000K, 3500K, 4000K, 5000K
- CRI: 80 or 90 min
- Non-ferrous construction
- 24V DC
- RF-EMI emissions compliant



MedMaster™ BHD6 for Behavioral Health Environments

- Delivered lumen range: 715–5,305 lm
- Input Power: 15 – 62W
- CCT: 3000K, 3500K, 4000K, 5000K
- CRI: 80 or 90 min
- Tamper-proof fasteners
- Wall-wash option
- Available with Indigo-Clean Technology & Tunable White Technology



Kenall 6" Sealed, Flush Lens, Downlights for Challenging Applications





SimpleSeal™ CDL6 for Cleanroom and Containment Applications

- Delivered lumen range: 794–5,305 lm
- Input Power: 15–62W
- CCT: 3000K, 3500K, 4000K, 5000K
- CRI: 80 or 90
- Available with Tunable White Technology



EnviroPro™ EPDL6 for Food Processing

- Delivered lumen range: 794–5,305 lm
- Input Power: 15–62W
- CCT: 3000K, 3500K, 4000K, 5000K
- CRI: 80 or 90



LuxTran™ TDL6 for Transit/ Transportation Applications

- Delivered lumen range: 950–5,305 lm
- Input Power: 15–62W
- CCT: 3000K, 3500K, 4000K, 5000K
- CRI: 80



Polycarbonate Lens Only



Millenium™ HADL6 for High Abuse Applications

- Delivered lumen range: 715–5,305 lm
- Input Power: 15–62W
- CCT: 3000K, 3500K, 4000K, 5000K
- CRI: 80 or 90
- Available with Indigo-Clean Technology





Kenall's luminaires are expertly designed in our state-of-the-art, vertically integrated, static-controlled manufacturing facility in Wisconsin. This enables us to provide tight control over the entire development process from fixture design and engineering to full-fledged metal fabrication, paint, assembly and shipping. We also take great care in sourcing only the highest-quality components to assure optimal product performance.

Our products comply with the Buy American Act: manufactured in the United States with more than 50% of the component cost of US origin.



Buy American Act Compliant



www.kenall.com | P: 800-4-Kenall | F: 262-891-9701 | 10200 55th Street Kenosha, Wisconsin 53144

This product complies with the Buy American Act: manufactured in the United States with more than 50% of the component cost of US origin. It may be covered by patents found at www.kenall.com/patents. Content of specification sheets is subject to change; please consult www.kenall.com for current product details.

Listings and Certifications

Multi-use downlights must satisfy a large number of demanding lighting and environmental requirements. Please refer to specific listings within each section of this guide to determine appropriate product listings.



ETL— A product bearing the ETL Listed Mark is determined to have met the minimum requirements of prescribed product safety standards as certified by a Nationally Recognized Testing Laboratory (NRTL). The mark also indicates that the manufacturer’s production site conforms to a range of compliance measures and is subject to periodic follow-up inspections to verify continued conformance.



CCEA Approved—The City of Chicago Environmental Air (CCEA) rating ensures that the luminaire is inherently airtight. Wiring and/or branch circuit terminations are sealed off and gasketed from the plenum air space. This listing ensures that the luminaire is sealed to limit air flow from the room side to the plenum.



IP64— UL Certified IP64 per IEC 60598 ensures that the enclosure is dust-tight and protected against splashing water without any harmful effects.



ICT— Indicates white, ambient Kenall luminaires using Indigo-Clean Technology, which kills harmful bacteria on-demand, including Staph, such as MRSA.



IP65 — UL Certified IP65 per IEC 60598 ensures that the enclosure is dust-tight and protected against jet streams of water from any direction without any harmful effects.



Tunable White— Tunable white technology enables the user to independently control both color temperature and intensity of light within a given application. This provides the ability to change the color of light from warm to neutral to cool in appearance, over time, based on the needs of the occupant or the space.



NSF2— An NSF2 Listing denotes that the luminaire has been evaluated for corrosion resistance, cleanability and the ability of exposed material to withstand normal wear. This supports the infection control standards established by healthcare facilities as it indicates that the luminaire is easy to sanitize.



Peace of Mind Guarantee—Kenall’s High Abuse luminaires are designed and built to take exceptional physical punishment. When installed according to our instructions, Kenall will repair or replace any unit rendered inoperable due to physical abuse for the life of the product installation.



MIL STD 461F— Military Standards testing measurements cover both radiated and conducted electromagnetic emissions in addition to maximum allowable amounts of emitted energy based on both frequency range and field strength. Luminaires meeting MIL STD 461F pose the lowest possible likelihood of causing EMI-related issues.

State-of-the-art, certified testing facility

Kenall is equipped with a state-of-the-art certified safety laboratory, providing comprehensive in-house testing capabilities:

Thermal Testing



Cold Weather Testing



High Temperature Testing

Photometrics Testing



Goniophotometer

Ingress Testing



Solids and Particulates Testing



Water Ingress Testing



26 | Lighting Challenging Environments

Kenall offers luminaires designed according to industry best practices and certified performance standards in each market segment we serve. From high abuse fixtures with an exclusive Peace of Mind Guarantee® against breakage and healthcare fixtures sealed for infection control, to sealed enclosure fixtures that comply with stringent military standards for RF/EMI and food processing fixtures that carry mission critical NSF, NEMA and IP ratings, our fixtures are designed with your specific needs in mind.

High Abuse

HA

Guaranteed against breakage for the life of the installation.

Main Applications

- Schools & Universities
- Public environments
- Military
- & stairwells



Healthcare

HC

Engineered to the specialized demands of healthcare environments with particular attention to cleanability and infectious control.

Main Applications

- Patient rooms
- Surgical suites
- MRI
- Labs



Sealed Enclosure

SE

One-piece, seam-welded enclosures for containment, controlled and sealed spaces.

Main Applications

- Pharmaceutical & research labs
- Cleanrooms
- Corrosive environments
- Hazardous locations



High Bay

HB

Sealed enclosure lighting for hazardous and extreme industrial applications

Main Applications

- Warehouses
- Manufacturing
- Natatorium
- Cold storage



Lighting Challenging Environments

Whether you're lighting a healthcare facility and need fixtures that support effective infection control and cleanability, or a tunnel, transit platform or parking facility that calls for features like corrosion-, shock- and vibration-resistance, Kenall can help at every turn. And for dependable task lighting that requires environmental integrity and versatility, or emergency exit lighting that meets life safety codes, you can depend on Kenall.

Correctional

COR

Heavy gauge, welded enclosures to deter even the most determined attempts to destroy, enter or vandalize.

Main Applications

- Cells
- Common areas
- Behavioral health
- Dayrooms



Transportation

TR

Meeting the specialized demands of transportation-related structures for high performance, corrosion resistance and serviceability.

Main Applications

- Tunnel & underpass
- Platform & depot
- Parking deck & surface lot
- Bridges



Task Lighting

TL

High efficiency LED, modular undercabinet lighting for professional spaces.

Main Applications

- Nurses stations
- Labs/MRI suites
- University dorms & administration areas
- Military/Government



Emergency

EE

High-abuse, extreme-environment LED exit and emergency egress lighting.

Main Applications

- Schools & Universities
- Recreational
- Sealed & correctional environments
- Outdoor/cold weather/extreme conditions



www.kenall.com | P: 800-4-Kenall | F: 262-891-9701 | 10200 55th Street Kenosha, Wisconsin 53144

This product complies with the Buy American Act: manufactured in the United States with more than 50% of the component cost of US origin. It may be covered by patents found at www.kenall.com/patents. Content of specification sheets is subject to change; please consult www.kenall.com for current product details.



10200 55th Street
Kenosha, WI 53144
Tel: 262-891-9700
www.kenall.com

©2017 Kenall Mfg. Co.
All rights reserved.
L10045-082018