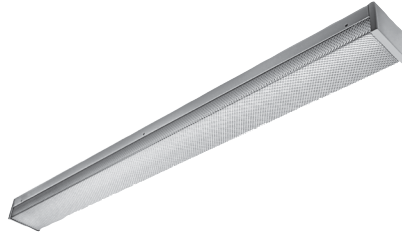


# SHERIFF™

## SH5 SERIES

### PRODUCT FEATURES:

- » Surface mount – ceiling or wall; 5"×24", 5"×36", 5"×48"
- » ADA Compliant
- » 16-gauge cold rolled steel baseplate with seam welded end caps
- » P12 polycarbonate wraparound lens
- » Peace of Mind Guarantee® against breakage



### PROJECT INFORMATION

Job Name \_\_\_\_\_

Fixture Type \_\_\_\_\_

Catalog Number \_\_\_\_\_

Approved by \_\_\_\_\_

### SPECIFICATIONS

**BASEPLATE:** One-piece 16-gauge CRS baseplate with welded corners. Baseplate provided with four-point (2, 3, and 6 foot) or six-point (4 foot) mounting holes and one wireway hole – see Cross Section/Details. TGIC polyester powder coat – 5-stage pre-treatment. Salt spray test: 1,000 hours; Reflectance: 92%. Lens is positioned in baseplate channels and retained with stainless steel Torx® fasteners (two fasteners/2 and 3 foot; six fasteners/4 and 6 foot). Baseplate/end caps mount flush to ceiling or wall surface.

**LENS:** Cold formed .156" P12 polycarbonate lens. See Options for alternate lenses.

**SOCKETS:** Shock-resistant sockets with internal locking collar to ensure positive lamp retention.

**HARDWARE:** Stainless steel Torx® T-20 with center pin fasteners secure lens in baseplate channel.

**ELECTRICAL:** **LED:** Available 3000K, 3500K, 4000K and 5000K color temperatures, 82 CRI. 120-277VAC and 347VAC, 50/60Hz electrical input with serviceable high power factor electronic, constant-current driver (<20% THD, >0.95 PF). Standard 0-10V dimming with 1-100% range and dim-to-dark capabilities. 0.2mA max. source current. Optional embedded microwave motion sensor (MS) has factory default settings of 20 minute time out, dims down to 30%. **LE:** Class P ballasts. Fluorescent electronic 120/277/347 and dual voltage ballasts high power factor.

**SENSOR & CONTROLS:** Optional sensor available with compatible third party controls. To see the full list of compatible controls, [click here](#).

**INSTALLATION:** Four-point (2 foot and 3 foot) or six-point (4 foot) mounting required for Peace of Mind Guarantee®.

**WARRANTY:** Limited five (5) year warranty on LED lamps. [Peace of Mind Guarantee against breakage](#).

**LISTINGS:** UL and CUL listed for Wet Location – covered ceilings only. UL and CUL listed for Damp Locations – wall mount. ADA Compliant. Suitable for installation into -40°C to 40°C ambient environments, unless otherwise noted. Luminaire tested to an IK10 impact protection rating per IEC 60068-2-75:1997-08.



### ORDERING INFORMATION (Ex: SH5-48-45L40K-DCC-DV-FS)

Model	Nom. Length	Lamp Qty	Lamp Type	Ballast/Driver	Ballast Qty	Voltage	Options	Accessories
<b>SH5</b>								
<b>Nominal Length</b>	<b>3' Lengths</b>			<b>Ballast/Driver Type</b>			<b>Options</b>	
24 2'	21 F21T5			<b>DCC</b> 0-10V Dimming LED Driver (LED only)			<b>EL*</b> Standard Lumen Battery Pack (32°F one-lamp operation)	
36 3'	25 F25T8			<b>IS</b> Instant Start Electronic <10% THD (T8)			<b>.187</b> .187" P12 Polycarbonate Lens	
48 4'	39* F39T5HO (n/a with 3 lamps)			<b>RS</b> Rapid Start Electronic <10% THD (CFL, T8, T5, T5HO)			<b>AL</b> Marine Grade Aluminum Housing	
				<b>SB</b> Specified Ballast			<b>BSS</b> Brush Stainless Steel Housing	
<b>Lamp Quantity*</b>	<b>4' Lengths</b>			<b>Ballast Quantity*</b>			<b>FS</b> Single Fuse & Holder	
1 One Lamp	<b>45L30K</b> 45 Watt 3000K LED			<b>1</b> One			<b>KO</b> Two 1/2" EMT Conduit Entry Knockouts (one per end cap)	
2 Two Lamps	<b>45L35K</b> 45 Watt 3500K LED			<b>2</b> Two			<b>OP</b> Opal Polycarbonate Lens	
3 Three Lamps	<b>45L40K</b> 45 Watt 4000K LED			<b>Voltage</b>			<b>PM</b> Pendant Mount	
	<b>45L50K</b> 45 Watt 5000K LED			<b>DV</b> 120-277VAC, 50/60Hz			<b>PSS</b> Painted Stainless Steel Housing	
<b>Lamp Type</b>	<b>28</b> F28T5			<b>347</b> 347VAC, 60Hz			<b>MS</b> Motion Sensor (4' LED Only; n/a with 347V)	
<b>2' Lengths</b>	<b>32</b> F32T8						<b>Accessories</b>	
<b>14</b> F14T5	<b>54*</b> F54T5HO (n/a with 3 lamps)						<b>CMW</b> Corner Mount Adapter – Wet Location Covered, Ceiling only	
<b>17</b> F17T8								

\* n/a with LED Lamp Type



www.kenall.com | P: 800-4-Kenall | F: 262-891-9700 | 10200 55th Street Kenosha, Wisconsin 53144, USA  
 This product is able to comply with the latest domestic preference legislation, such as the Buy American Act (BAA), Trade Agreement Act (TAA), Build America, Buy America Act (BABA), and others. It may be covered by patents found at www.kenall.com/patents. Content of specification sheets is subject to change; please consult www.kenall.com for current product details. ©2024 Kenall Mfg. Co.

A brand of **legrand**

# SHERIFF™

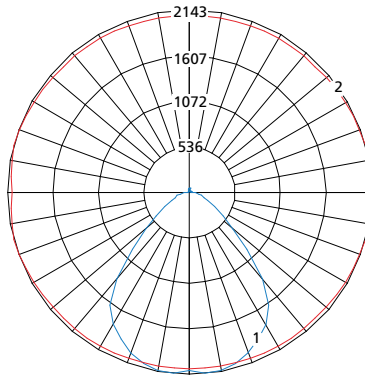
## SH5 SERIES

### PERFORMANCE

Lamp Type	Initial Delivered Lumens		Input Power (W)	Drive Current (mA)	Estd. L70 LED Life (Hrs)
	@ 25°C	Efficacy (lm/W)			
45L30K	4,534	94	48	100	80,000
45L35K	4,674	97			
45L40K	4,834	101			
45L50K	5,165	108			

Information subject to change without notice. Photometry tested to the IESNA LM-79-08 standard by an ILAC/ISO17025 accredited laboratory. For photometric data, please go to [www.kenall.com](http://www.kenall.com)

Model: SH5-48-45L40K-DCC-DV

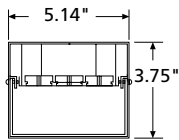


Maximum Candela = 2143 Located At Horizontal Angle = 195, Vertical Angle = 5

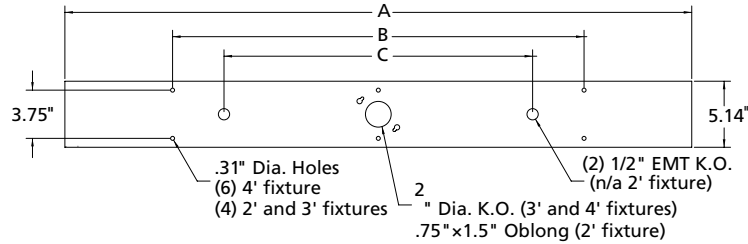
- 1 - Vertical Plane Through Horizontal Angles (195-15) (Through Max. Cd.)
- 2 - Horizontal Cone Through Vertical Angle (5) (Through Max. Cd.)

### DIMENSIONAL DATA

#### CROSS SECTION



#### MOUNTING HOLES



#### DIMENSIONAL DATA (IN INCHES)

	A	B	C
5x24	24.75	16.00	n/a
5x36	36.75	24.00	24.00
5x48	48.75	32.00	24.00

