

MILLENIUM STRETCH™

MLHA8 SERIES – GEOMETRIC/CONTINUOUS RUN

PROJECT INFORMATION

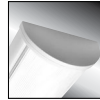
Job Name _____
 Fixture Type _____
 Catalog Number _____
 Approved by _____

PRODUCT FEATURES:

- » Surface mount – wall or ceiling; nominal 8" x 48"
- » Extruded aluminum housing with die-cast end caps
- » Low-profile, ADA compliant
- » Peace of Mind Guarantee® against breakage



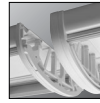
Rounded End Cap



Flat End Cap



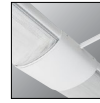
Reveal End Cap



Continuous Row Joiner Band



Node "L" 2-Way



Node "N" Inline



Node "T" 3-Way



Node "X" 4-Way

SPECIFICATIONS

HOUSING: Marine grade aluminum. Extruded body with die-cast end caps. Housing, with end caps, post assembly TGIC polyester powder coat finished – 5-step pre-treatment. Each pattern run of luminaires consists of one or more "L", "N", "T", or "X" node. See ordering information to specify quantities. NOTE: Contact factory for pattern layout details.

REFLECTOR: Full reflector/wire cover – 97% reflectivity.

LENS: UV-stabilized, high impact extruded clear or pearlescent polycarbonate. Smooth exterior, linear prismatic interior. Nominal thickness .156". Lens securely positioned in body channels and end caps. Lens locked in place with tamper-resistant stainless steel Torx® with center pin fasteners and sealed with closed cell gaskets.

END CAPS: Marine grade die-cast aluminum. Three styles available: Flat, Rounded and Reveal. Conduit and "Wiremold™" ready" knockouts visible only from interior of end cap (Flat and Rounded styles only).

NODES: Marine grade cast aluminum cover mounted to 18-gauge mounting plate. Cover includes knockouts for Wiremold™ entry (not available in "X" 4-way node).

SOCKETS: Shock-resistant sockets with internal locking collar to ensure positive lamp retention.

HARDWARE: Four stainless steel, tamper-resistant Torx® fasteners secure lens in housing body's lens channel. Electrical Quick Connector supplied (Specify Circuit Qty, see below).

ELECTRICAL: LED: Available 3500K, 4000K and 5000K color temperatures, 82 CRI. 120-277VAC and 347VAC, 50/60Hz electrical input with serviceable high power factor electronic, constant-current driver (<20% THD, >0.95 PF). Standard 0-10V dimming with 1-100% range and dim-to-dark capabilities; maximum driver source of 330 µA. LE: Class P ballasts. Fluorescent electronic 120/277/347 and dual voltage ballasts high power factor.

SENSOR & CONTROLS: Optional sensor available with compatible third party controls. To see the full list of compatible controls, [click here](#).

INSTALLATION: Standard six-point mounting per fixture required for Peace of Mind Guarantee®.

WARRANTY: limited ten (10) year warranty for LED Lamps. [Peace of Mind Guarantee against breakage](#).

LISTINGS: Luminaire is certified to UL standards by Intertek Testing Laboratories for non-IC and Damp Location installations. ADA compliant. Suitable for use as a raceway. Suitable for use in continuous row. Luminaire tested to an IK10 impact protection rating per IEC 60068-2-75:1997-08.



ORDERING INFORMATION (Ex: MLHA8GMS-4/48-0/L-0/T-4/X-0/N-R-MB-CP-1-54-RS-1-120)

Model	Fixture Qty	Node L	Node T	Node X	Node N	End Cap*	Finish	Lens	Lamp Qty	Lamp Type	Ballast/Driver	Circuit Qty	Voltage	Options
MLHA8GMS	/48	/L	/T	/X	/N									

<p>Fixture Quantity (replace "x" with qty) (x)/48 Nominal 48" housing</p> <p>Node L (replace x with qty) (x)/L Node "L" 2-Way Intersecting</p> <p>Node T (replace x with qty) (x)/T Node "T" 3-Way Intersecting</p> <p>Node X (replace x with qty) (x)/X Node "X" 4-Way Intersecting</p> <p>Node N (replace x with qty) (x)/N Node "N" Inline</p> <p>End Caps* (if required) R Rounded F Flat RV Reveal</p>	<p>Finish MW Matte White MB Matte Black LG Light Gray CC Custom Color (Consult Factory)</p> <p>Lens CP† Clear Polycarbonate PP Pearlescent Polycarbonate</p> <p>Lamp Quantity (Cross Section)† 1 One 2† Two</p> <p>Lamp Type 45L35K 45 Watt 3500K LED 45L40K 45 Watt 4000K LED 45L50K 45 Watt 5000K LED 67L35K 67 Watt 3500K LED 67L40K 67 Watt 4000K LED 67L50K 67 Watt 5000K LED 90L35K 90 Watt 3500K LED 90L40K 90 Watt 4000K LED 90L50K 90 Watt 5000K LED 28 F28T5 (rapid start only) 32 F32T8 54 F54T5HO (rapid start only) 54A F54T5HO amalgam (rapid start only)</p>	<p>Ballast/Driver Type DCC Dimming Constant Current (LED) IS Instant Start Electronic <10% THD (T8) RS Rapid Start Electronic <10% THD (T8, T5, T5HO) SB Specified Ballast</p> <p>Circuit Quantity† 1 One 2† Two</p> <p>Voltage 120 120 Volts 277 277 Volts 347A 347 Volts DV 120-277 Volts</p>	<p>Options EL**† 500 Minimum Lumen Battery Pack – Specify Qty (90 Minutes; 32°F Starting Temperature) PEL**† 1100 Minimum Lumen Battery Pack – Specify Qty (90 Minutes; 32°F Starting Temperature) FS Single Fuse & Holder PH Phillips Head Fasteners PM Pendant Mount (Max. 3/8NPT stems by others; damp only) UC† Uplight Component (Pendant Mount only; stems by others) XC Auxiliary Circuit</p> <p>** One lamp maximum in emergency mode. † n/a with EL or PEL options. n/a with T5HO if EL/PEL option ordered with PM or UC option † n/a with LED Lamp Type</p>
---	---	--	---



www.kenall.com | P: 800-4-Kenall | F: 262-891-9700 | 10200 55th Street Kenosha, Wisconsin 53144, USA
 This product is able to comply with the latest domestic preference legislation, such as the Buy American Act (BAA), Trade Agreement Act (TAA), Build America, Buy America Act (BABA), and others. It may be covered by patents found at www.kenall.com/patents. Content of specification sheets is subject to change; please consult www.kenall.com for current product details. ©2024 Kenall Mfg. Co.

A brand of **legrand**

MILLENNIUM STRETCH™

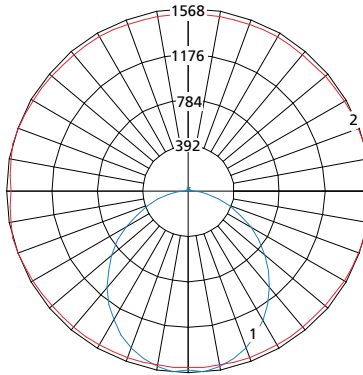
MLHA8 SERIES – GEOMETRIC/CONTINUOUS RUN

PERFORMANCE

Lamp Type	Initial Delivered Lumens				
	@ 25°C	Efficacy (lm/W)	Input Power (W)	Drive Current (mA)	Estd. L70 LED Life (Hrs)
45L35K	4,758	97	49	100	150,000
45L40K	5,072	104	49	100	150,000
45L50K	5,072	104	49	100	150,000
67L35K	7,284	100	73	75	150,000
67L40K	7,765	106	73	75	150,000
67L50K	7,765	106	73	75	150,000
90L35K	9,252	94	98	100	150,000
90L40K	9,864	101	98	100	150,000
90L50K	9,864	101	98 </td <td>100</td> <td>150,000</td>	100	150,000

Information above is valid for the recommended Type PP lens type and is subject to change without notice. Visit www.kenall.com for IES files and additional information.

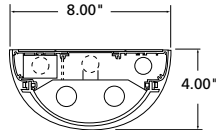
Model: MLHA8-48-F-MW-PP-45L40K-DCC-DV



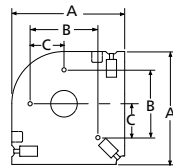
Maximum Candela = 1568 Located At Horizontal Angle = 15, Vertical Angle = 5

- 1 - Vertical Plane Through Horizontal Angles (15-195) (Through Max. Cd.)
- 2 - Horizontal Cone Through Vertical Angle (5) (Through Max. Cd.)

DIMENSIONAL DATA

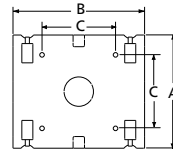


Please provide reflected ceiling plans to factory for dimensional data and factory supplied fixture layout with mounting information. Dimensions A and B are outside dimensions. Dimension C is mounting holes.



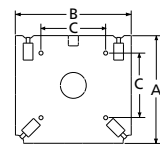
"L" NODE

SERIES	Dimensions			Part #
	A	B	C	
MLRS8S	8.33"	5.00"	2.50"	ML8L



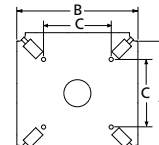
"N" NODE

SERIES	Dimensions			Part #
	A	B	C	
MLRS8S	7.70"	8.95"	5.00"	ML8N



"T" NODE

SERIES	Dimensions			Part #
	A	B	C	
MLRS8S	8.33"	8.95"	5.00"	ML8T



"X" NODE

SERIES	Dimensions			Part #
	A	B	C	
MLRS8S	8.95"	8.95"	5.00"	ML8X

Dimensions A and B are outside dimensions. Dimension C is mounting holes.



www.kenall.com | P: 800-4-Kenall | F: 262-891-9700 | 10200 55th Street Kenosha, Wisconsin 53144, USA
 This product is able to comply with the latest domestic preference legislation, such as the Buy American Act (BAA), Trade Agreement Act (TAA), Build America, Buy America Act (BABA), and others. It may be covered by patents found at www.kenall.com/patents. Content of specification sheets is subject to change; please consult www.kenall.com for current product details. ©2024 Kenall Mfg. Co.

A brand of Legrand