

MAC2B SERIES



IMPORTANT SAFEGUARDS

When using electrical equipment, basic safety precautions should always be followed, including the following:

THIS PRODUCT MUST BE INSTALLED IN ACCORDANCE WITH THE APPLICABLE INSTALLATION CODE BY A PERSON FAMILIAR WITH THE CONSTRUCTION AND OPERATION OF THE PRODUCT AND THE HAZARDS INVOLVED. DISCONNECT POWER TO ALL CIRCUITS BEFORE WIRING FIXTURE. INSTALL IN ACCORDANCE WITH ALL NATIONAL, STATE, AND LOCAL CODES. DO NOT CONNECT TO AN UNGROUNDED SUPPLY. READ ALL FIXTURE MARKINGS AND LABELS TO ENSURE CORRECT INSTALLATION OF FIXTURE. SUPPLEMENTAL INSTRUCTIONS MAY BE LOCATED ON THE FIXTURE, IN ADDITION TO THIS INSTRUCTION SHEET, REGARDING ORIENTATION, OR MOUNTING RESTRICTIONS.

SAVE THESE INSTRUCTIONS

INSTALLATION INSTRUCTIONS

Install in compliance with the National Electric Code, any applicable local codes and any specific instructions given on the luminaire labels. If installing in conjunction with any additional options and/or accessories, also refer to the respective instruction sheets. For installation only by a qualified electrician.

NOTE: To maintain the ratings and approvals noted on the fixture nameplate, any fittings or mounting hardware supplied with this fixture, must be used with this fixture.

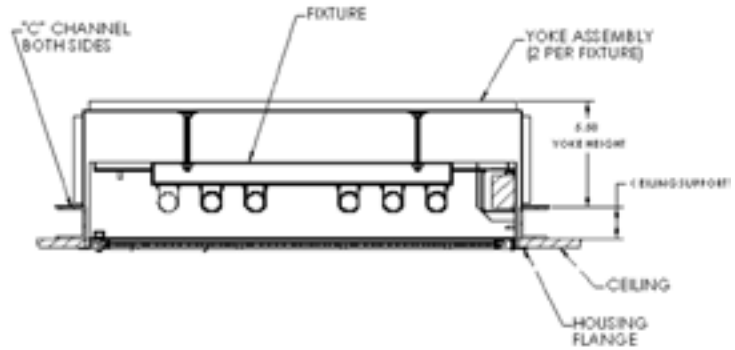
SURFACE MOUNTED FIXTURES

1. Use mounting hardware (if provided) to secure the fixture to its location. If no hardware is supplied, any appropriate hardware can be used.
2. Fixtures with external mounting tabs must be mounted using all tabs.



RECESSED FLANGE FIXTURES

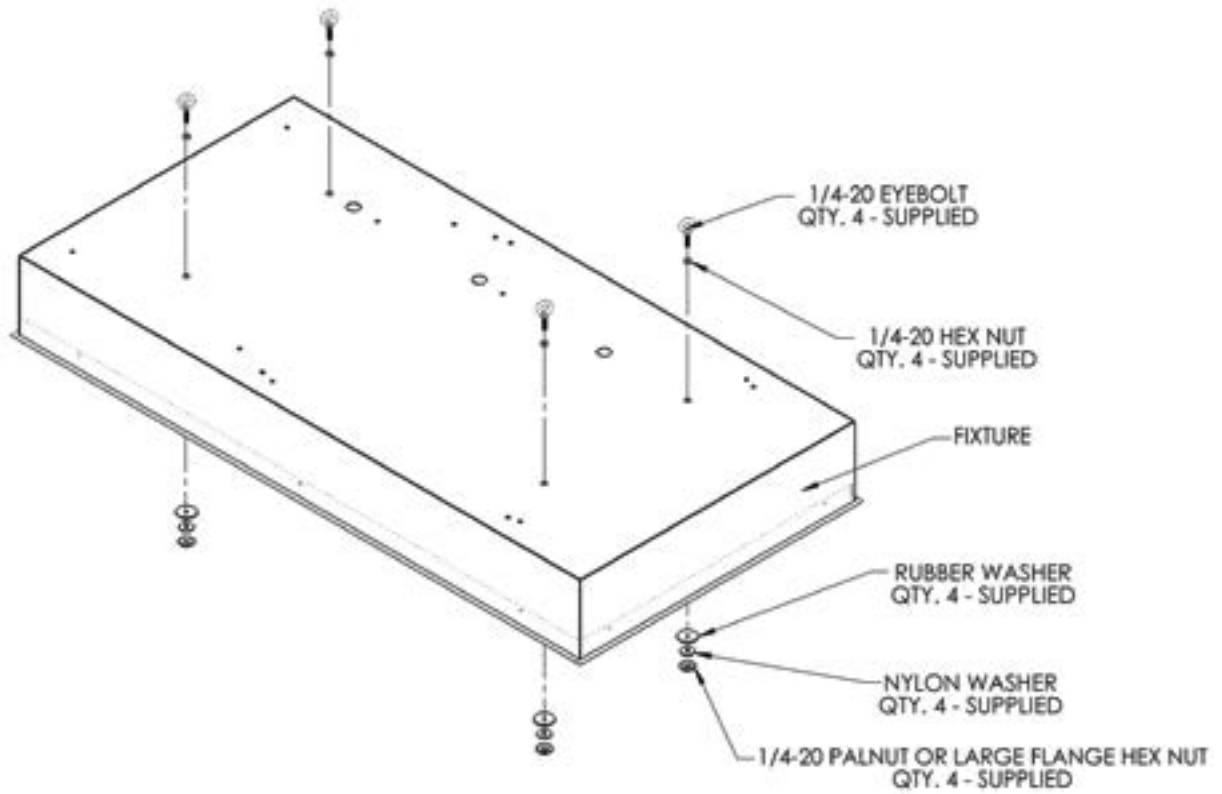
1. To ensure an adequate seal between the flange and the ceiling system, it is important to have a square opening and a flat ceiling surface. When gypsum is used as the base material it should have adequate thickness to resist bowing. See appropriate specification sheet or contact Kenall directly for recommended ceiling cutout dimension. The cutout opening should be accurate to within a 1/16 of an inch.
2. Framing around the entire opening is recommended and should start at the rough opening. Typically, "C" shaped 16 gauge galvanized cold rolled channel used to frame the opening because of its straightness.
3. Gypsum board shall be secured to the framing material around the opening. The ceiling surface around the opening shall be flat and smooth and not run (deviate from a straight edge) more than 1/32 inch over 2 feet. The opening should always be cut into whole pieces of gypsum. Ceiling seams and joints shall be outside of fixture cutouts. Framing members running under the gypsum shall be whole pieces around the cutouts and run the length of the cutout, not just under the yoke bracket.
4. After creating the rough opening, frame the opening on the plenum side of the ceiling.
5. The yoke will span the width of the rough cutout and must be secured to C channel or framing material. Fasten the carriage bolt to the yoke with the nut in the hardware bag. Then, locate and secure the yoke bracket to the "C" channel, located so that the carriage bolts will engage the holes in the housing when the fixture is installed.
6. Connect the appropriate flexible raceway system to the wiring access hole and raise the fixture into the opening.
7. Apply a bead of caulk to the ceiling side of the housing flange, to seal the fixture housing to the ceiling. All 4 bolts will pass into the housing. Attach neoprene washer (if supplied), nylon washer and nut to the bolt to hold the housing in place.
8. Tighten all 4 nuts until fixture is firmly seated in the cutout.



RECESSED GRID FIXTURES

1. Fixture is designed for use with 1.00"/1.50" T bar grid systems with vertical grid T thickness' of less than 1/4" with a maximum height of 2". Grid systems can be installed with standard 12, 24 or 48 inch center line spacing of grid.
2. Fixture housing lays into grid.

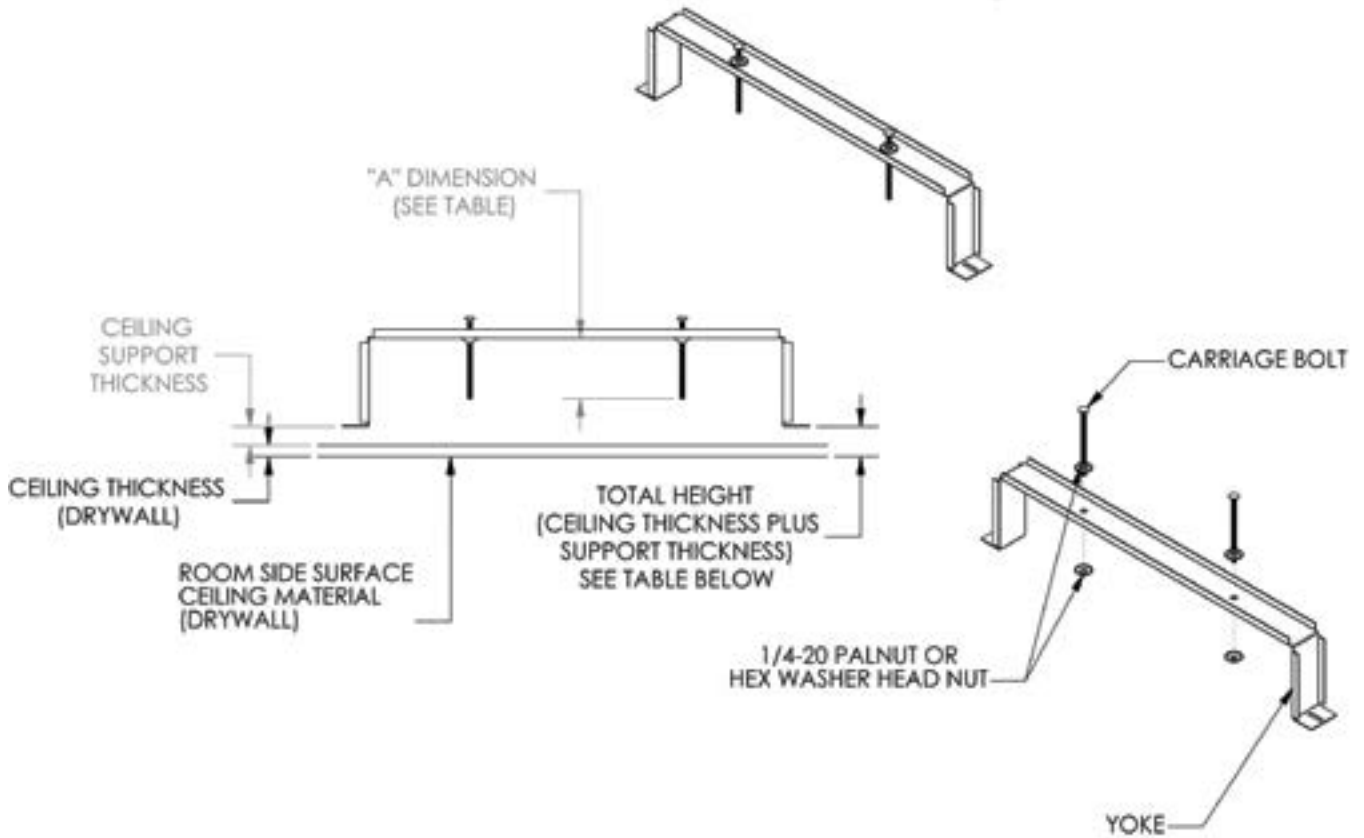




EYEBOLT ASSEMBLY

NOTE: Eyebolt assembly is used to support grid fixture to structure above.

1. Thread standard 1/4"-20 hex nut onto eyebolt.
2. Slip eyebolt/nut assembly through housing (4 places).
3. From inside housing, install rubber washer, nylon washer, and palnut or large flange hex nut and tighten (4 places).

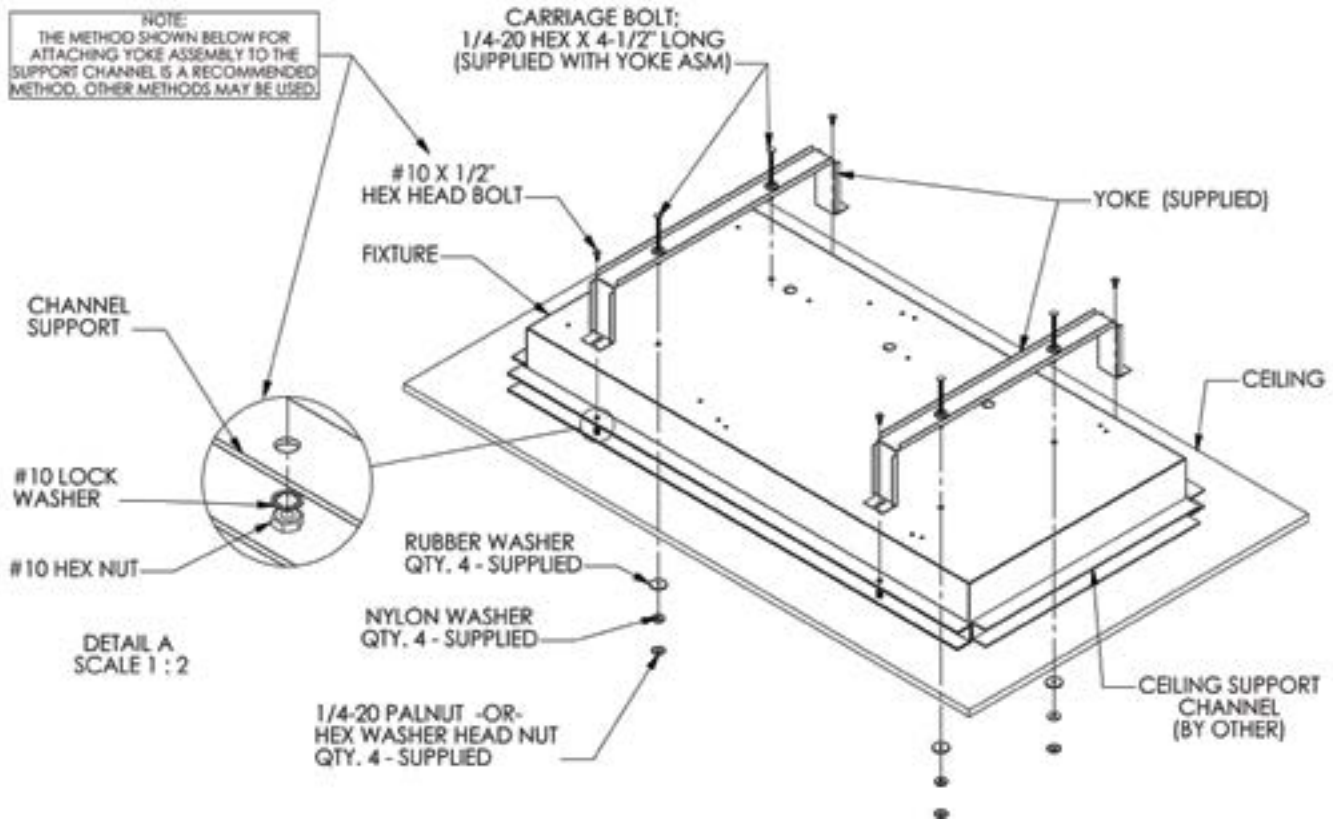


CARRIAGE BOLT ASSEMBLY

NOTES:

1. Kenall supplies 4 1/2" long carriage bolts. This bolt can be adjusted for the different height support channel used on the inside perimeter.
2. Refer to the chart below and locate the appropriate "A" dimension. This dimension is the amount of the threaded bolt required to secure the fixture.





YOKE INSTALLATION

1. After carriage bolts have been set to proper height dimensions, and center points have been located in ceiling supports, attach yoke assembly (yoke/support attach hardware by others).
2. Refer to the chart below and locate the appropriate "A" dimension. This dimension is the amount of the threaded bolt required to secure the fixture.

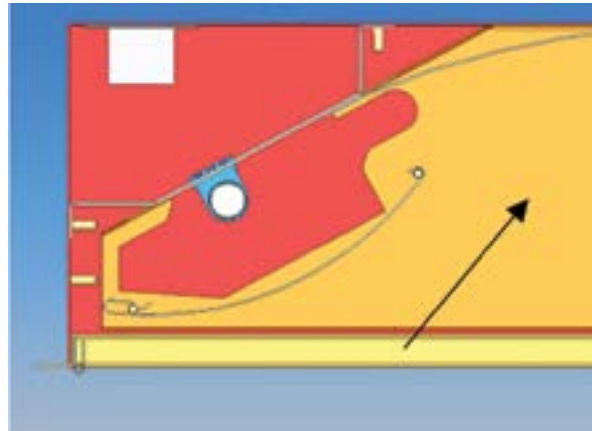
WIRING INSTRUCTIONS

1. Read all fixture markings and labels to insure correct installation of the fixture. Additional information may be located on the fixture, separate from this instruction sheet, regarding orientation and mounting restrictions.
2. Disconnect power to main circuits before wiring fixture.
3. Undo center reflector and wire way cover to gain access to the inside of the fixture (also refer to next page for diffuser operation).
4. Attach conduit to wiring hole.
5. Connect fixture leads to power supply leads using connectors suitable for the gage and number of wires being used (not included). Connections are to be made in the junction box, not the fixture. Black and other colored wires connect to the supply conductor, white fixture lead connects to the neutral supply conductor, and the grounding wire must be connected to a suitable ground.
6. Fasten wire way cover and center reflector.

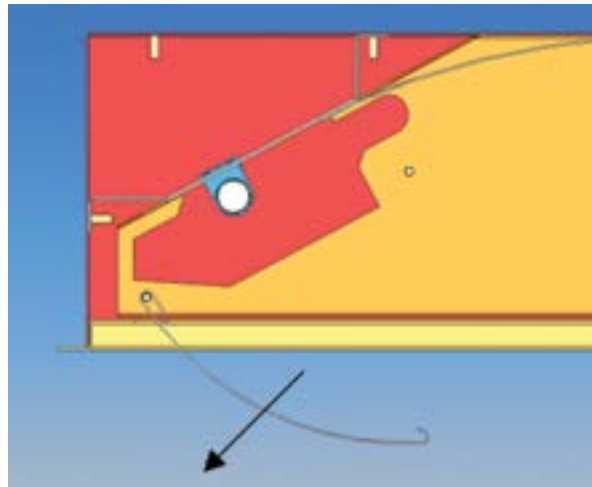


DIFFUSER REMOVAL INSTRUCTIONS

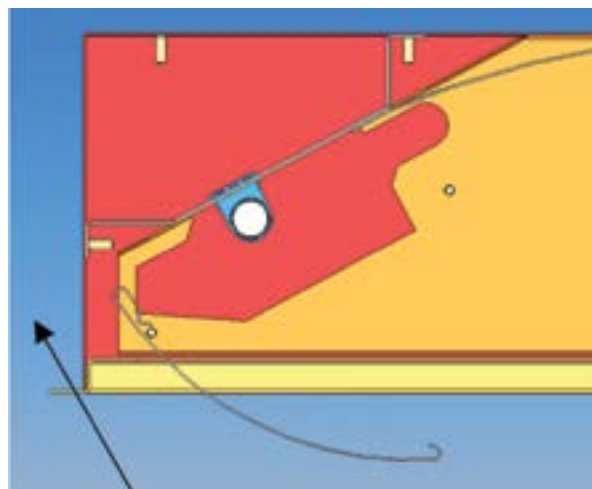
1. Slide to unhook diffuser.



2. Swing down to re-lamp.



3. If necessary for wiring access, push up to remove diffuser.



CUSTOMER SERVICE

For technical assistance, call 1-800-4KENALL (1-800-453-6255).

WARRANTY

For warranty information visit www.kenall.com/Resources/Certified-Performance-Warranties

