

LTD14 - FLUORESCENT SERIES

IMPORTANT SAFEGUARDS

When using electrical equipment, basic safety precautions should always be followed, including the following:

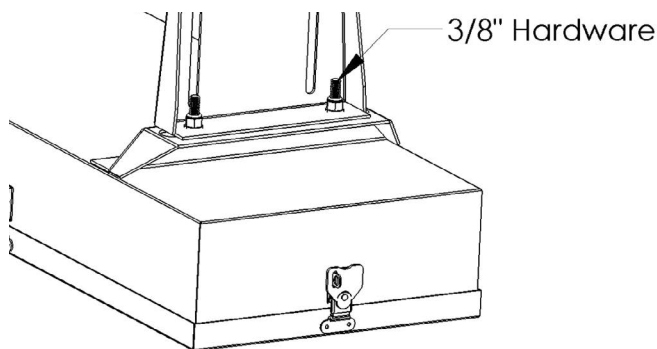
THIS PRODUCT MUST BE INSTALLED IN ACCORDANCE WITH THE APPLICABLE INSTALLATION CODE BY A PERSON FAMILIAR WITH THE CONSTRUCTION AND OPERATION OF THE PRODUCT AND THE HAZARDS INVOLVED. DISCONNECT POWER TO ALL CIRCUITS BEFORE WIRING FIXTURE. INSTALL IN ACCORDANCE WITH ALL NATIONAL, STATE, AND LOCAL CODES. DO NOT CONNECT TO AN UNGROUNDED SUPPLY. READ ALL FIXTURE MARKINGS AND LABELS TO ENSURE CORRECT INSTALLATION OF FIXTURE. SUPPLEMENTAL INSTRUCTIONS MAY BE LOCATED ON THE FIXTURE, IN ADDITION TO THIS INSTRUCTION SHEET, REGARDING ORIENTATION, OR MOUNTING RESTRICTIONS.

SAVE THESE INSTRUCTIONS

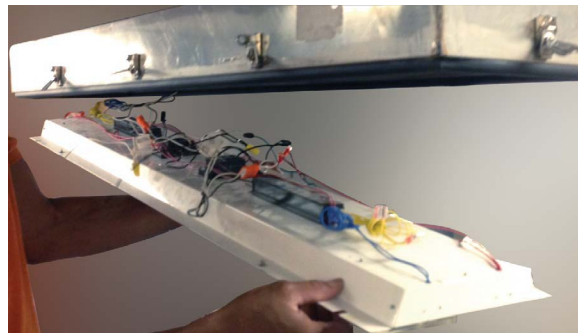
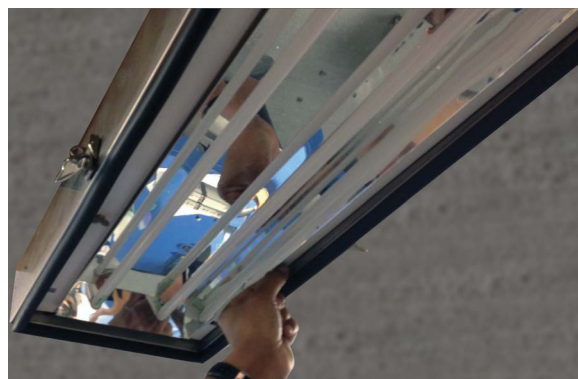
Read all fixture markings and labels to insure correct installation of the fixture. Additional information may be located on the fixture, separate from this instruction sheet, regarding orientation and mounting restrictions. Disconnect power to main circuits before wiring fixture. Remove door/housing to gain access to the inside of the fixture.

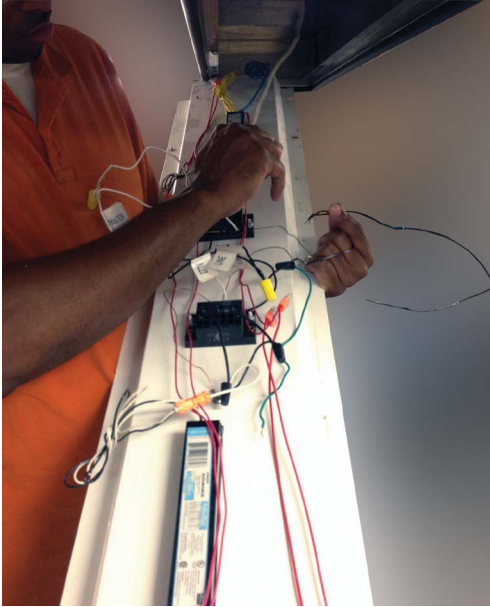
INSTALLATION INSTRUCTIONS

1. Attach luminaire to mounting brackets using 3/8" - 316 SS bolts, lock nuts and lock washers.
3. Remove four (4) 1/4 turn screws and remove electrical tray.



2. Unlatch and remove door.





6. Close and secure door with latches (reverse step 2).

4. Bring main power and make electrical connection to terminal block.
5. Close and secure electrical tray with 1/4 turn screws (reverse step 3).

CAUTION

Care should be exercised when these fixtures will not be installed immediately upon delivery, and if they will not be put into service immediately after installation. Proper fixture performance and a "like new" appearance can only be assured if precautions are taken after fixtures arrive. If fixtures will be on site but uninstalled for any length of time please follow these precautions to prevent damage to the fixtures:

Fixtures should be left palletized in the cardboard gaylord, in an indoor area. If gaylord is opened, fixtures should be indoors and left in their plastic bags to protect from dirt and moisture.

CUSTOMER SERVICE

For technical assistance, call 1-800-4KENALL (1-800-453-6255).

WARRANTY

For warranty information visit www.kenall.com/Resources/Certified-Performance-Warranties



www.kenall.com | P: 800-4-Kenall | F: 262-891-9701 | 10200 55th Street Kenosha, Wisconsin 53144, USA

This product complies with the Buy American Act: manufactured in the United States with more than 50% of the component cost of US origin. It may be covered by patents found at www.kenall.com/patents. Content of specification sheets is subject to change; please consult www.kenall.com for current product details. ©2019 Kenall Mfg. Co.

A brand of  **legrand**