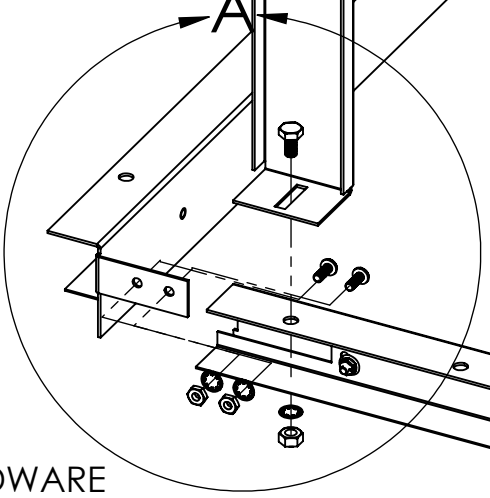
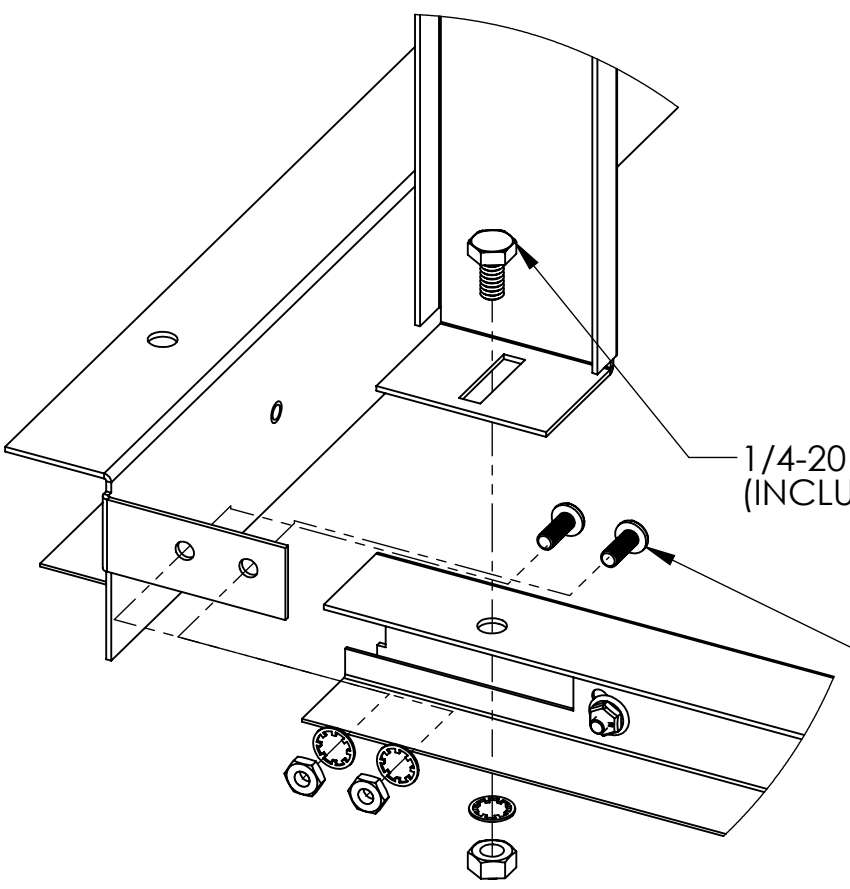
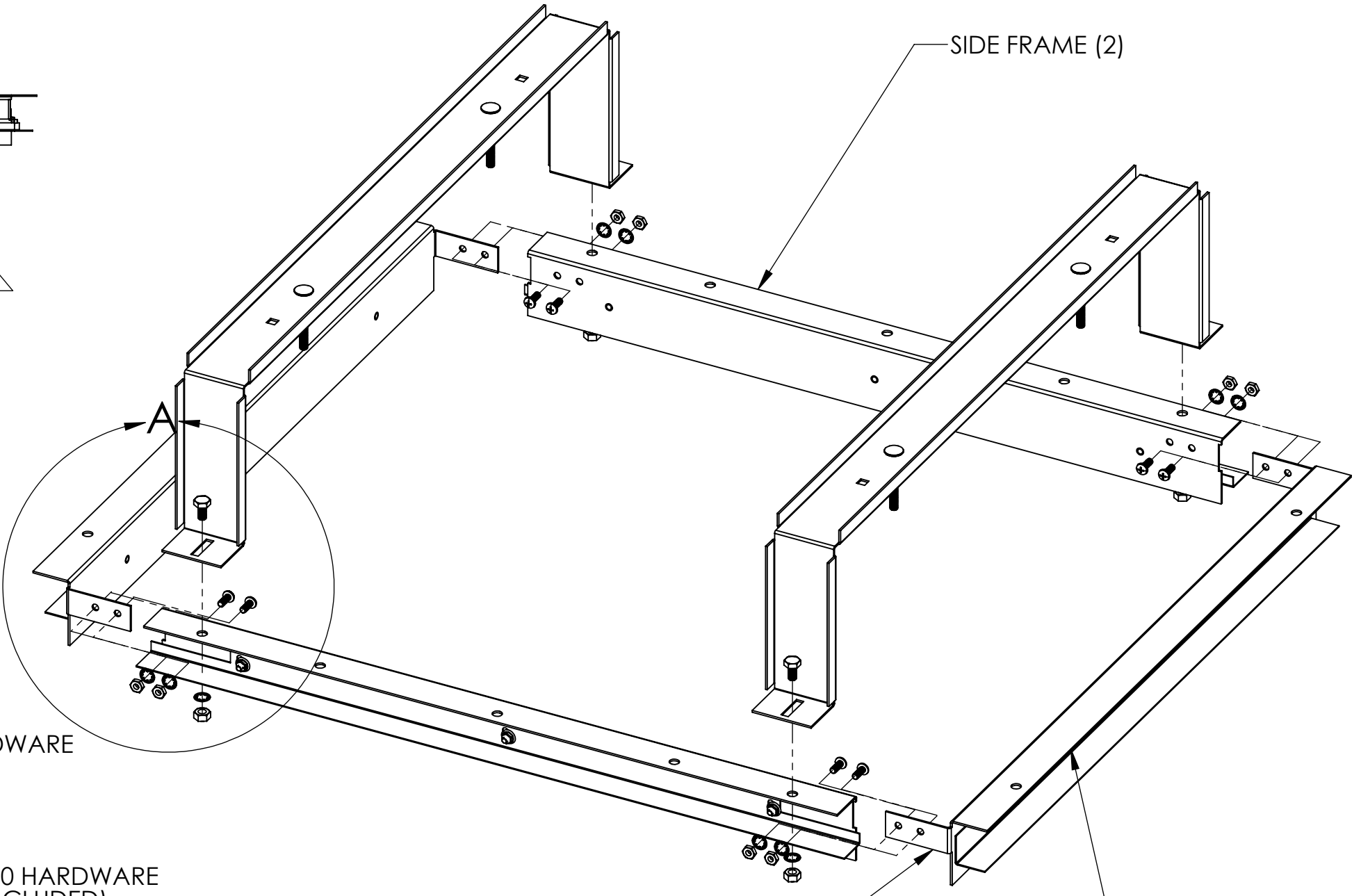
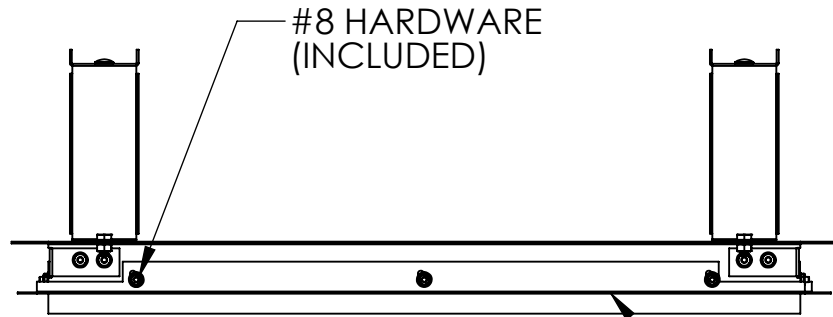


8 7 6 5 4 3 2 1

D
C
B
A

D
C
B
A



DETAIL A
SCALE 1 : 2

UNLESS OTHERWISE SPECIFIED DIMENSIONS ARE IN INCHES TOLERANCES ARE:		
FRACTIONS	DECIMALS	ANGLES
--	.XXX ± 0.015	± 1/2°
MATERIAL:		
FINISH:		

CAD GENERATED DRAWING, DO NOT MANUALLY UPDATE	
DRAWN AND APPROVED BY	DATE
CJF	12/20/2019
SCALE: -- DO NOT SCALE DRAWING	

KENALL
10200 55th Street Kenosha WI 53144

**INSTRUCTIONS; INSTALL
FRAME ASSEMBLY MMPC22**

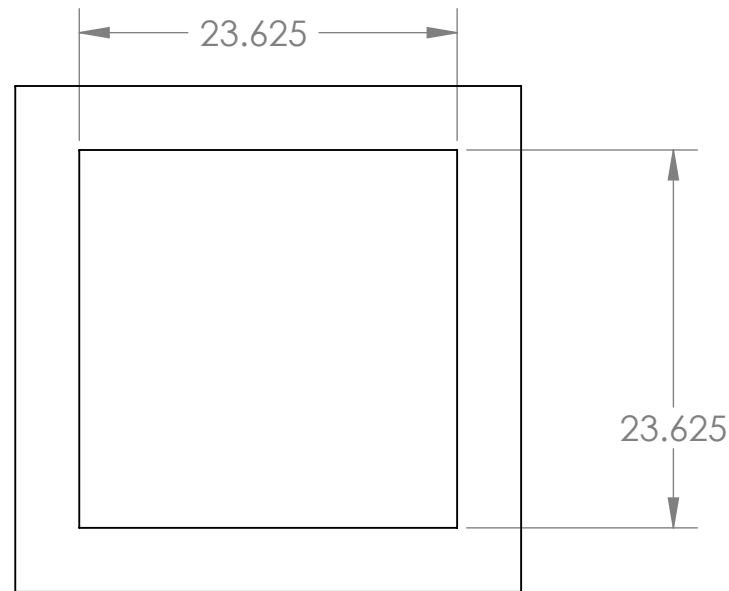
F-7752

SIZE DWG. CAD FILE No: B
SHT: 1 REV. 0
OF: 2

This document contains information that is privileged, confidential or otherwise protected from use and disclosure. You are hereby notified that any review, disclosure, copying, dissemination or taking of any of Kenall Manufacturing Company.

8 7 6 5 4 3 2 1

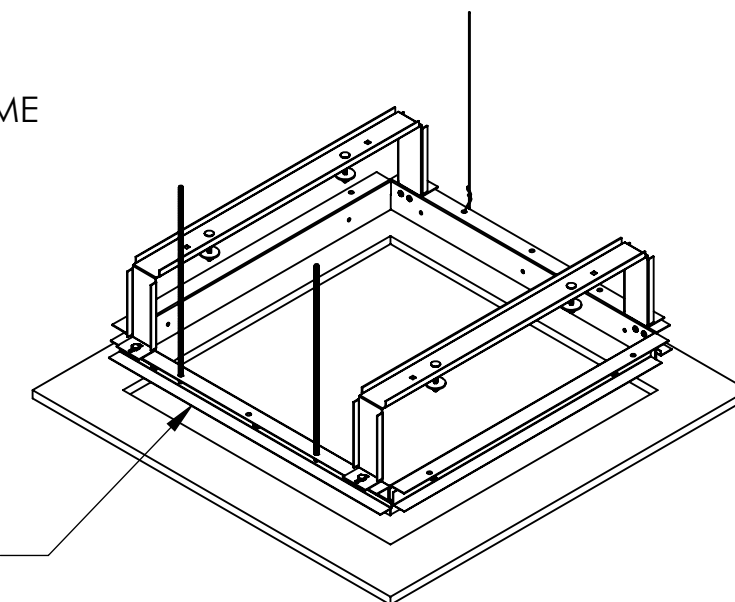
8 7 6 5 4 3 2 1



RECOMMENDED CEILING CUTOUT

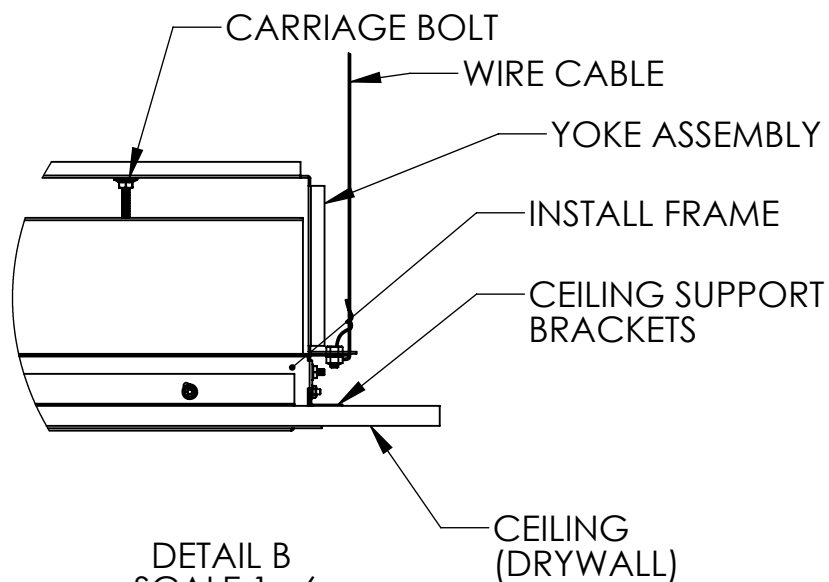
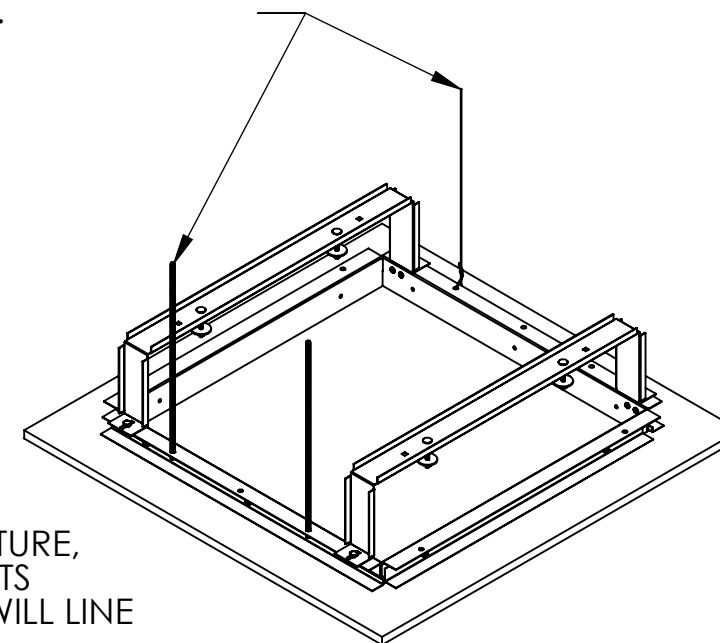
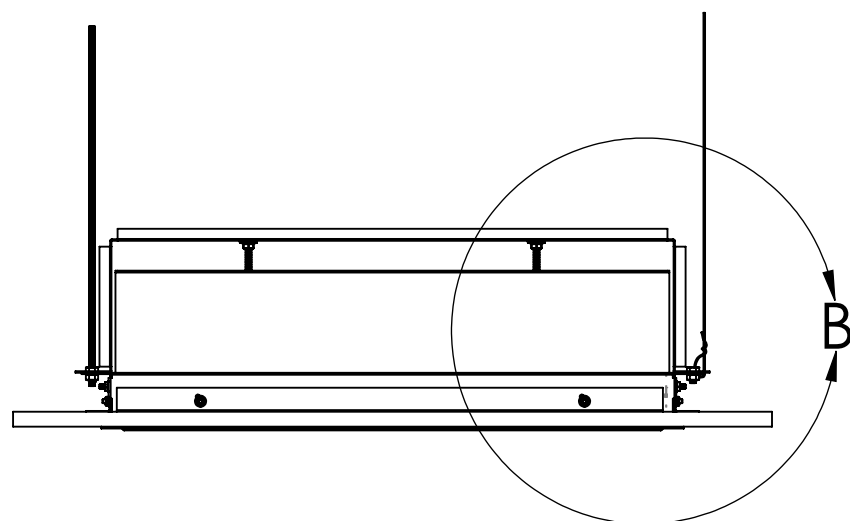
NOTE: PRE-ASSEMBLED INSTALL FRAME WILL NOT FIT THROUGH CEILING CUTOUT FROM ROOM SIDE

IF PLENUM ACCESS IS AVAILABLE, PRE-ASSEMBLE INSTALL FRAME AND LOWER INTO CEILING CUTOUT.
IF INSTALL FRAME IS TO BE INSTALLED FROM ROOM SIDE, LIFT END FRAMS, SIDE FRAMES, AND YOKES INTO CEILING CUTOUT, AND ASSEMBLE TOGETHER WITHIN PLENUM.



ADJUST CELING SUPPORTS (4) UNTIL BOTTOM OF INSTALL FRAME IS FLUSH WITH ROOM SIDE OF CEILING CUTOUT.
CEILING THICKNESS RANGE: 1/2" TO 3/4".


SECURE FRAME TO SUPERSTRUCTURE USING METHOD APPROPRIATE FOR THE INSTALLATION (E.G., THREADED ROD, HANGER WIRE, ETC.) SUPPORTING METHOD AND HARDWARE BY OTHERS.



DETAIL B
SCALE 1 : 6

- NOTE:
1. AFTER INSTALL FRAME IS SECURED TO SUPERSTRUCTURE, SLIDE FIXTURE INTO OPENING AND CARRIAGE BOLTS PROTRUDING DOWN FROM THE YOKE ASSEMBLY WILL LINE UP WITH HOLES ON THE BACK SIDE OF FIXTURE.
 2. ONCE FIXTURE IS IN PLACE, INSTALL SUPPLIED RUBBER AND NYLON WASHERS.
 3. SECURE FIXTURE WITH (4) 1/4"-20 HEX WASHER HEAD NUTS (SUPPLIED).

This document contains information that is privileged, confidential or otherwise protected from use and disclosure. You are hereby notified that any review, disclosure, copying, dissemination or taking of any action in reliance on its contents or other use is strictly prohibited. This document and its contents are confidential proprietary information of Kenall Manufacturing Company.

UNLESS OTHERWISE SPECIFIED DIMENSIONS ARE IN INCHES TOLERANCES ARE:			 10200 55th Street Kenosha WI 53144	
FRACTIONS	DECIMALS	ANGLES		
--	.XXX±.015	±1/2°	CAD GENERATED DRAWING, DO NOT MANUALLY UPDATE	
MATERIAL:			DRAWN AND APPROVED BY	DATE
FINISH:			CJF	12/20/2019
			SCALE: --	SIZE DWG. CAD FILE No: B
			DO NOT SCALE DRAWING	INSTRUCTIONS; INSTALL FRAME ASSEMBLY MMPC22 F-7752 SHT: 2 OF: 2 REV: 0

8 7 6 5 4 3 2 1