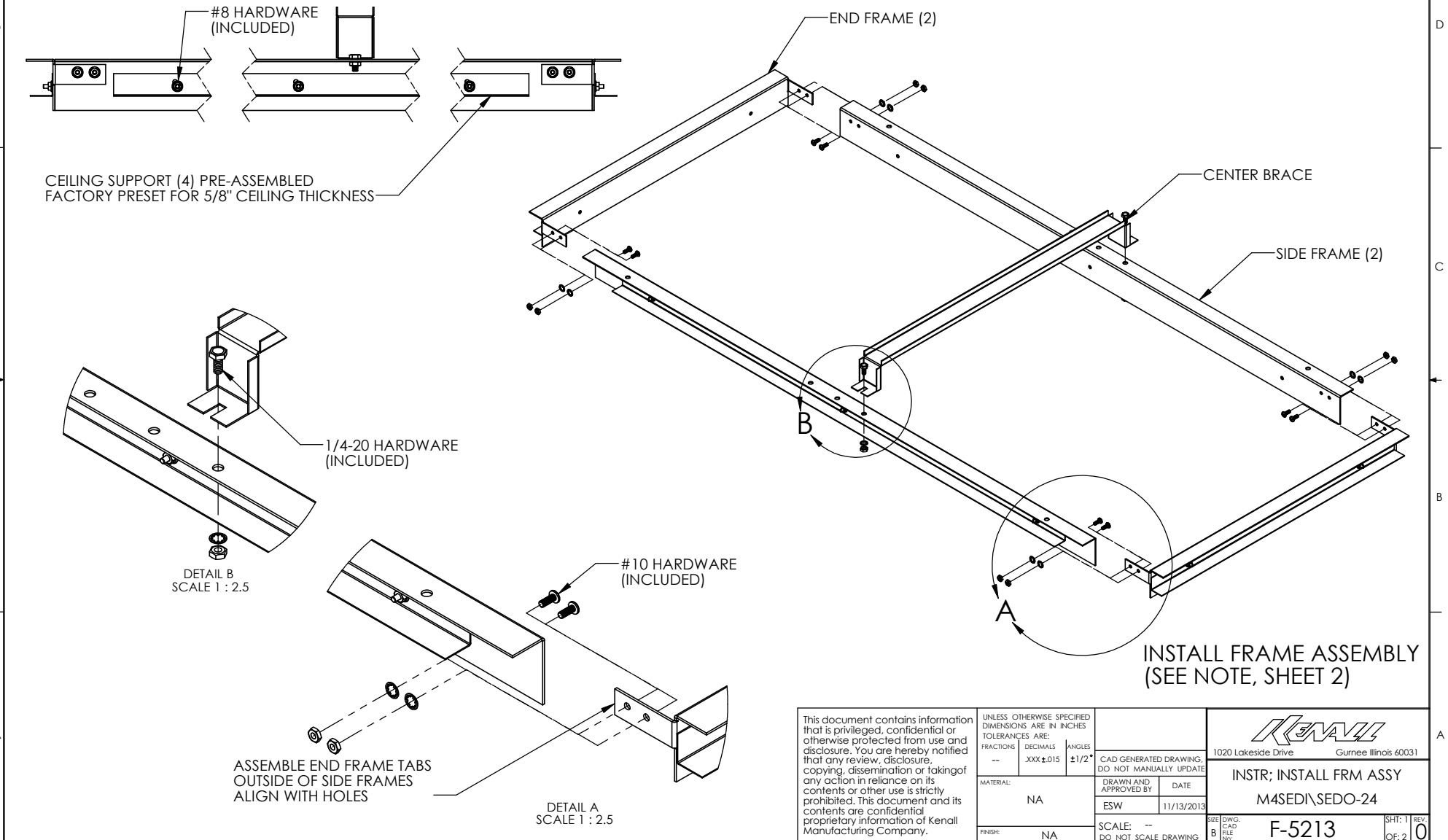


Existing Flat Part	S	I
---	No	No
Existing Form Part	S	I
---	No	No

REVISIONS				
REV.	ECN NO.	DESCRIPTION	BY	DATE



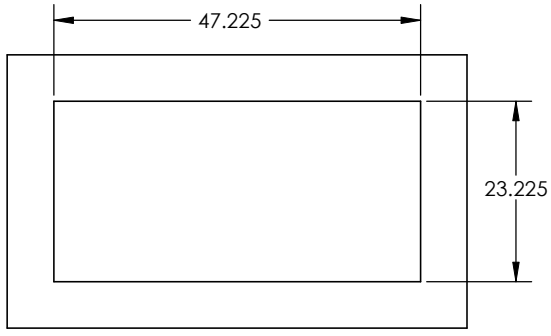
This document contains information that is privileged, confidential or otherwise protected from use and disclosure. You are hereby notified that any review, disclosure, copying, dissemination or taking of any action in reliance on its contents or other use is strictly prohibited. This document and its contents are confidential proprietary information of Kenall Manufacturing Company.

UNLESS OTHERWISE SPECIFIED DIMENSIONS ARE IN INCHES		
TOLERANCES ARE:		
FRACTIONS	DECIMALS	ANGLES
---	.XXX ±.015	±1/2°
MATERIAL:		
NA		
FINISH:		
NA		

1020 Lakeside Drive Gurnee Illinois 60031	
CAD GENERATED DRAWING, DO NOT MANUALLY UPDATE	
DRAWN AND APPROVED BY ESW	DATE 11/13/2013
INSTR: INSTALL FRM ASSY M4SED\SEDO-24	
SCALE: -- DO NOT SCALE DRAWING	DWG. CAD FILE NO: F-5213
SIZE B	SH: 1 OF: 2

Existing Flat Part	S	I
---	No	No
Existing Form Part	S	I
---	No	No

NOTE: INSTALL FRAME CAN BE PRE-ASSEMBLED AND INSERTED FROM ROOM SIDE IF SUFFICIENT OVERHEAD PLENUM CLEARANCE EXISTS.

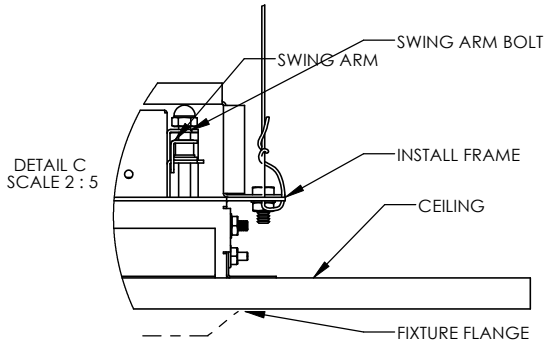
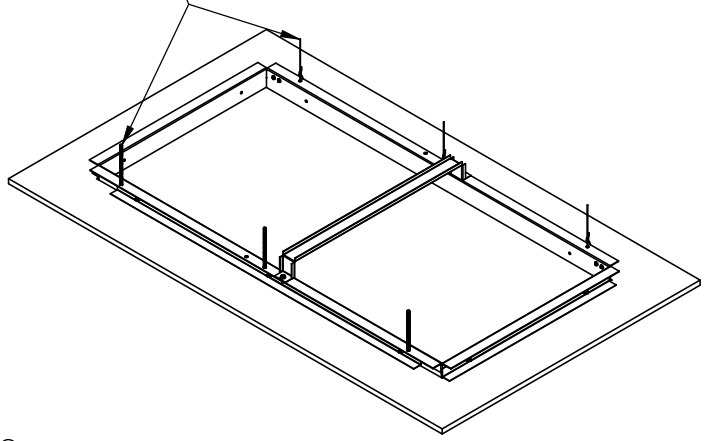
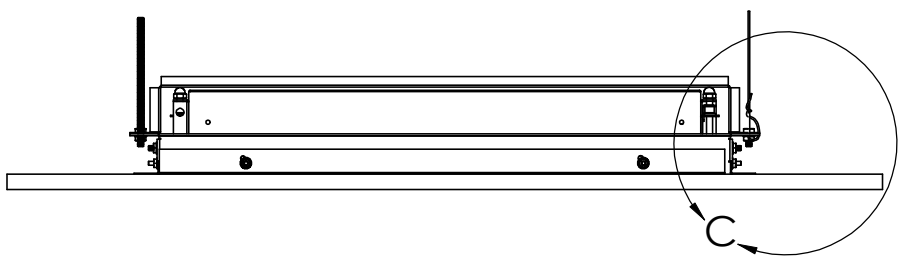
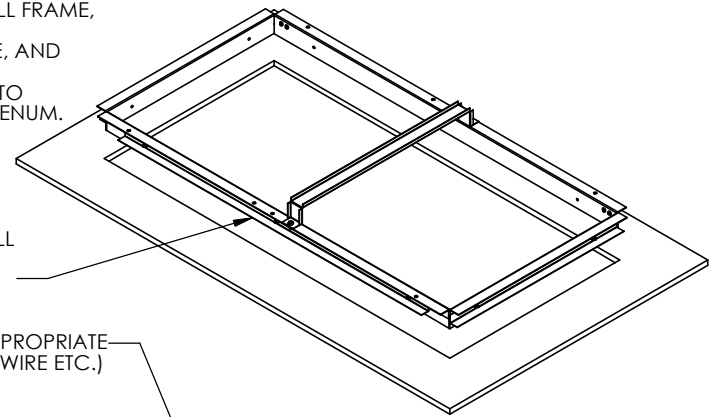


RECOMMENDED CEILING CUTOUT

IF PLENUM ACCESS IS AVAILABLE, PRE-ASSEMBLE INSTALL FRAME, AND LOWER INTO CEILING CUTOUT.
 IF INSTALL FRAME IS TO BE INSTALLED FROM ROOM SIDE, AND INSUFFICIENT OVERHEAD PLENUM CLEARANCE EXISTS, LIFT END FRAMES, SIDE FRAMES AND CENTER BRACE INTO CEILING CUTOUT, AND ASSEMBLE TOGETHER WITHIN PLENUM.

ADJUST CEILING SUPPORTS (4) UNTIL BOTTOM OF INSTALL FRAME IS FLUSH WITH ROOM SIDE OF CEILING CUTOUT. CEILING THICKNESS RANGE : 1/2" TO 3/4".

SECURE FRAME TO SUPERSTRUCTURE USING METHOD APPROPRIATE FOR THE INSTALLATION (E.G., THREADED ROD, HANGER WIRE ETC.) SUPPORTING METHOD AND HARDWARE BY OTHERS



DETAIL C
SCALE 2 : 5

- RAISE FIXTURE INTO INSTALL FRAME
- TURN SWING ARM BOLTS (4) CLOCKWISE TO DEPLOY SWING ARMS AND ENGAGE INSTALL FRAME
- CONTINUE TURNING SWING ARM BOLTS CLOCKWISE UNTIL FIXTURE IS FIRMLY AND EVENLY SEATED AGAINST CEILING

This document contains information that is privileged, confidential or otherwise protected from use and disclosure. You are hereby notified that any review, disclosure, copying, dissemination or taking of any action in reliance on its contents or other use is strictly prohibited. This document and its contents are confidential proprietary information of Kenall Manufacturing Company.	UNLESS OTHERWISE SPECIFIED DIMENSIONS ARE IN INCHES TOLERANCES ARE: FRACTIONS: --- DECIMALS: .XXX ±.015 ANGLES: ±1/2°			CAD GENERATED DRAWING, DO NOT MANUALLY UPDATE		1020 Lakeside Drive Gurnee Illinois 60031
	MATERIAL: NA		DRAWN AND APPROVED BY: ESW	DATE: 11/13/2013		
	FINISH: NA		SCALE: -- DO NOT SCALE DRAWING		SIZE: B	DWG. FILE NO: F-5213 SH: 2 OF: 2
	REV: 0					