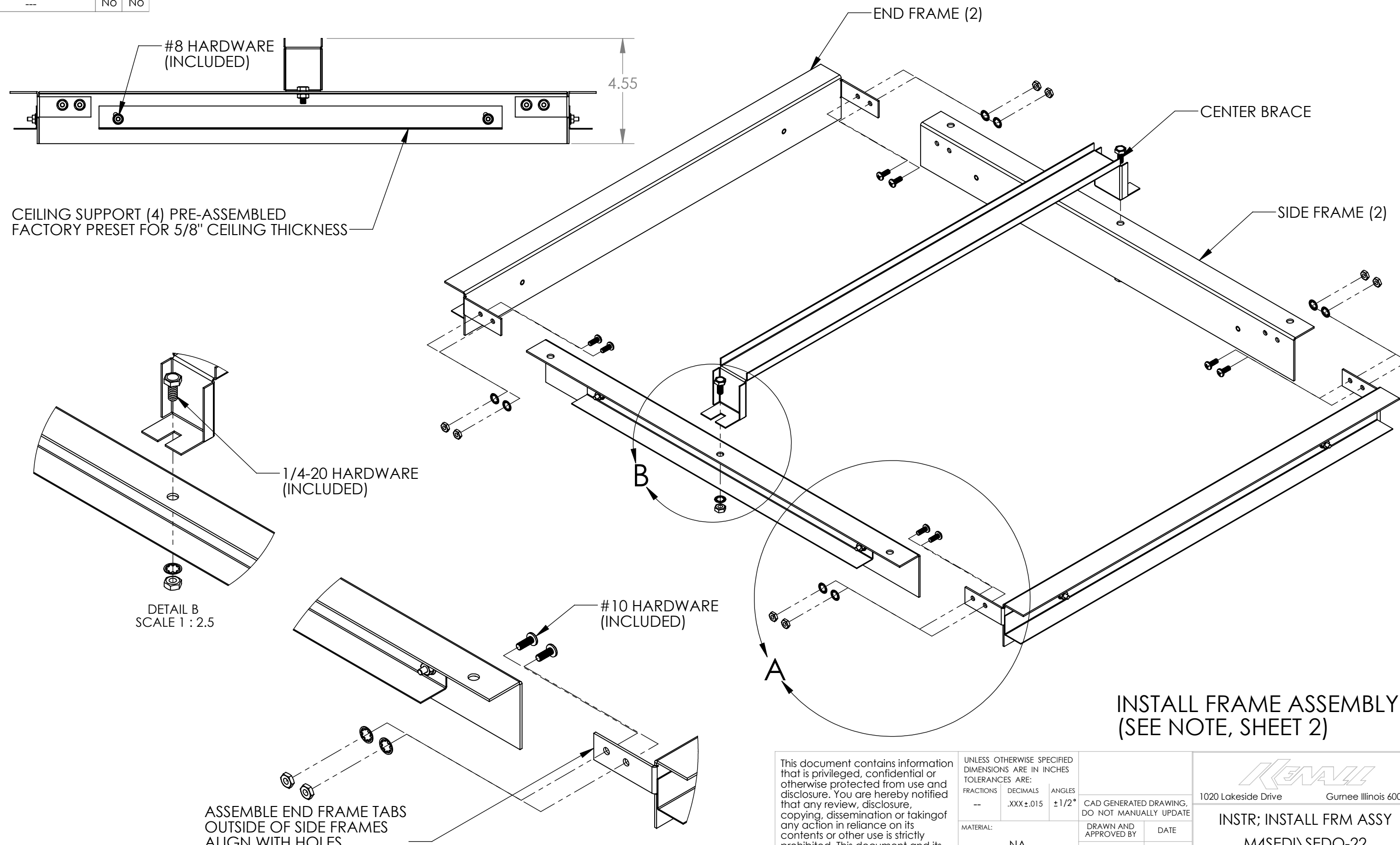


Existing Flat Part	S	I
---	No	No
Existing Form Part	S	I
---	No	No

REVISIONS				
REV.	ECN NO.	DESCRIPTION	BY	DATE



DETAIL B  
SCALE 1 : 2.5

DETAIL A  
SCALE 1 : 2.5

ASSEMBLE END FRAME TABS  
OUTSIDE OF SIDE FRAMES  
ALIGN WITH HOLES

**INSTALL FRAME ASSEMBLY**  
(SEE NOTE, SHEET 2)

This document contains information that is privileged, confidential or otherwise protected from use and disclosure. You are hereby notified that any review, disclosure, copying, dissemination or taking of any action in reliance on its contents or other use is strictly prohibited. This document and its contents are confidential proprietary information of Kenall Manufacturing Company.

UNLESS OTHERWISE SPECIFIED DIMENSIONS ARE IN INCHES TOLERANCES ARE:		
FRACTIONS	DECIMALS	ANGLES
--	.XXX ± 0.15	± 1/2°
MATERIAL:	NA	
FINISH:	NA	
CAD GENERATED DRAWING, DO NOT MANUALLY UPDATE		DATE
DRAWN AND APPROVED BY	ESW	11/12/2013
SCALE: --		DO NOT SCALE DRAWING

**KENALL**  
1020 Lakeside Drive Gurnee Illinois 60031

**INSTR; INSTALL FRM ASSY**  
**M4SEDI\SEDO-22**

**F-5212**

SIZE DWG. CAD FILE No: B  
SHT: 1 REV. 0  
OF: 2

Existing Flat Part	S	I
---	No	No
Existing Form Part	S	I
---	No	No

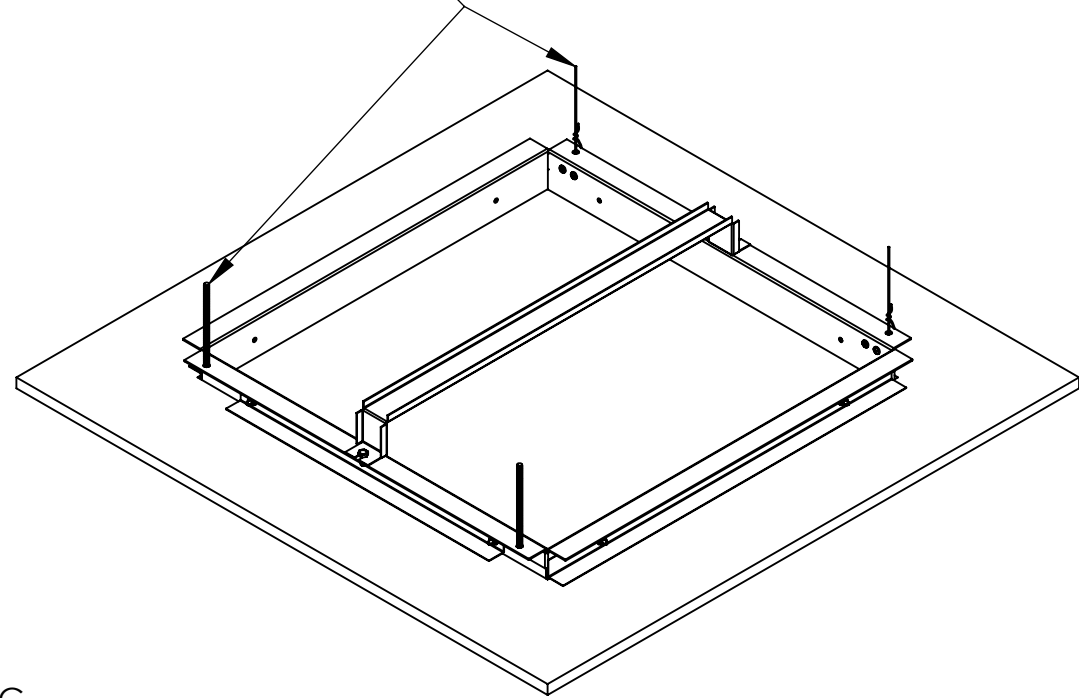
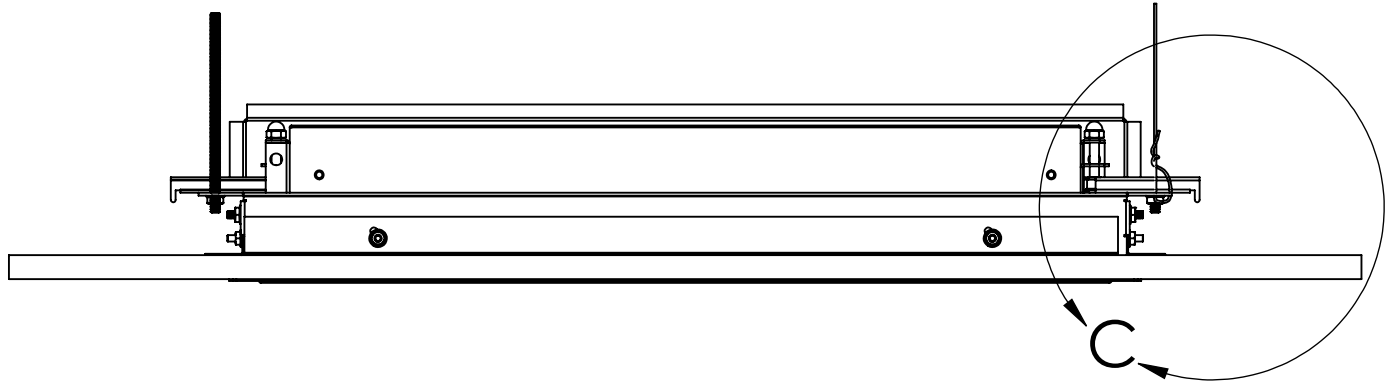
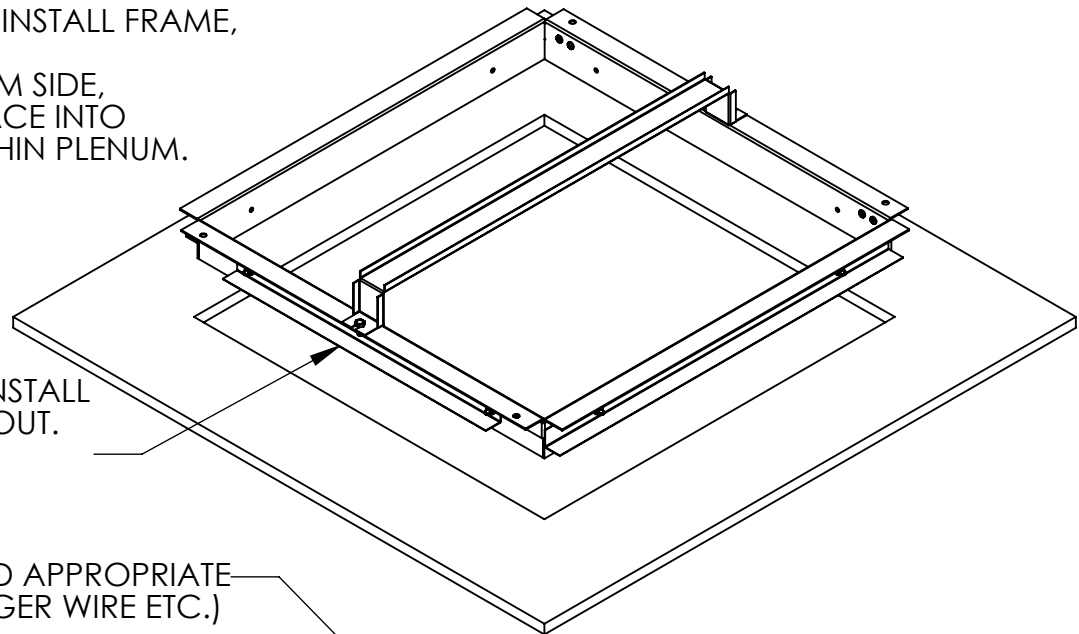
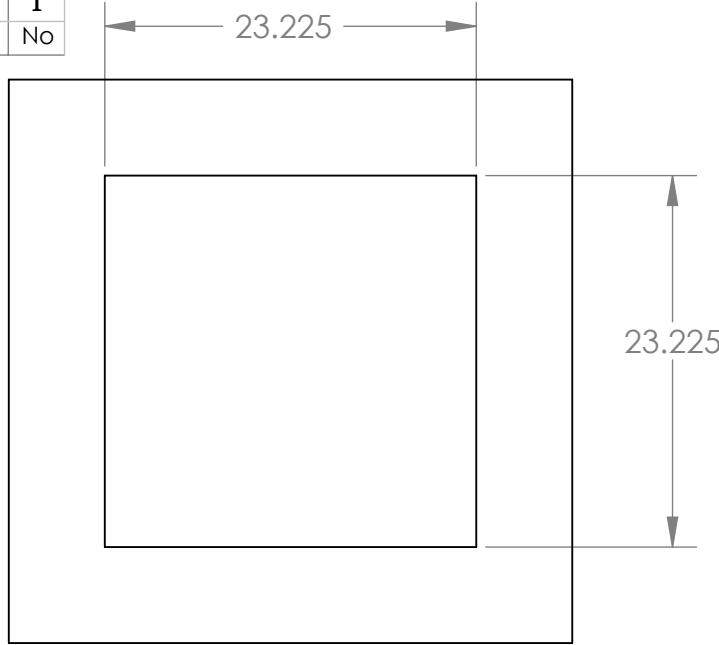
**NOTE: PRE-ASSEMBLED INSTALL FRAME WILL NOT FIT THROUGH CEILING CUTOUT FROM ROOM SIDE.**

IF PLENUM ACCESS IS AVAILABLE, PRE-ASSEMBLE INSTALL FRAME, AND LOWER INTO CEILING CUTOUT.  
IF INSTALL FRAME IS TO BE INSTALLED FROM ROOM SIDE, LIFT END FRAMES, SIDE FRAMES AND CENTER BRACE INTO CEILING CUTOUT, AND ASSEMBLE TOGETHER WITHIN PLENUM.

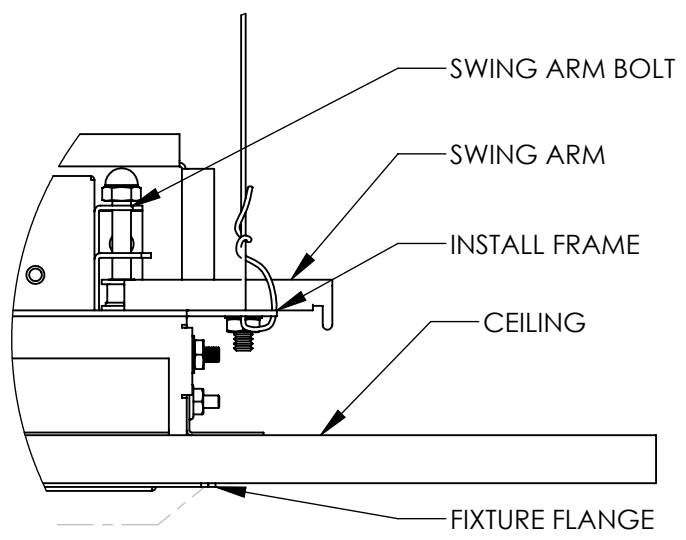
ADJUST CEILING SUPPORTS (4) UNTIL BOTTOM OF INSTALL FRAME IS FLUSH WITH ROOM SIDE OF CEILING CUTOUT.  
CEILING THICKNESS RANGE : 1/2" TO 3/4".

SECURE FRAME TO SUPERSTRUCTURE USING METHOD APPROPRIATE FOR THE INSTALLATION (E.G., THREADED ROD, HANGER WIRE ETC.) SUPPORTING METHOD AND HARDWARE BY OTHERS

RECOMMENDED CEILING CUTOUT



DETAIL C  
SCALE 2 : 5



- RAISE FIXTURE INTO INSTALL FRAME
- TURN SWING ARM BOLTS (4) CLOCKWISE TO DEPLOY SWING ARMS AND ENGAGE INSTALL FRAME
- CONTINUE TURNING SWING ARM BOLTS CLOCKWISE UNTIL FIXTURE IS FIRMLY AND EVENLY SEATED AGAINST CEILING

This document contains information that is privileged, confidential or otherwise protected from use and disclosure. You are hereby notified that any review, disclosure, copying, dissemination or taking of any action in reliance on its contents or other use is strictly prohibited. This document and its contents are confidential proprietary information of Kenall Manufacturing Company.

UNLESS OTHERWISE SPECIFIED DIMENSIONS ARE IN INCHES TOLERANCES ARE:		
FRACTIONS	DECIMALS	ANGLES
--	.XXX±.015	±1/2°
MATERIAL: NA		
FINISH: NA		
CAD GENERATED DRAWING, DO NOT MANUALLY UPDATE		
DRAWN AND APPROVED BY	DATE	
ESW	11/12/2013	
SCALE: -- DO NOT SCALE DRAWING		

**Kenall**  
1020 Lakeside Drive Gurnee Illinois 60031

**INSTR; INSTALL FRM ASSY**  
**M4SEDI\SEDO-22**

**F-5212**

SIZE: B DWG. CAD FILE No: B  
SHT: 2 OF: 2 REV: 0