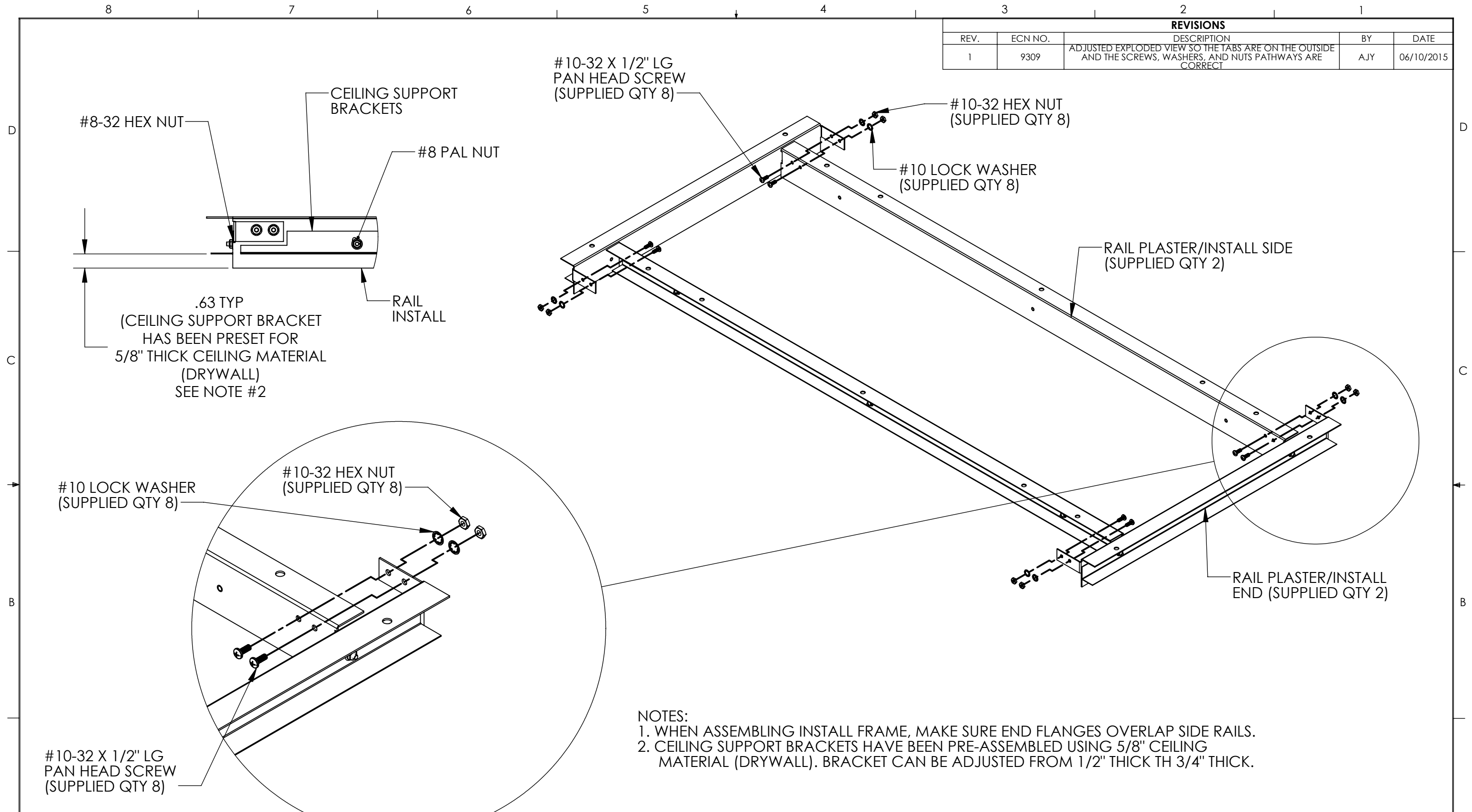


REVISIONS				
REV.	ECN NO.	DESCRIPTION	BY	DATE
1	9309	ADJUSTED EXPLODED VIEW SO THE TABS ARE ON THE OUTSIDE AND THE SCREWS, WASHERS, AND NUTS PATHWAYS ARE CORRECT	AJY	06/10/2015



- NOTES:
1. WHEN ASSEMBLING INSTALL FRAME, MAKE SURE END FLANGES OVERLAP SIDE RAILS.
 2. CEILING SUPPORT BRACKETS HAVE BEEN PRE-ASSEMBLED USING 5/8" CEILING MATERIAL (DRYWALL). BRACKET CAN BE ADJUSTED FROM 1/2" THICK TH 3/4" THICK.

NOTE:
 THE OUTLINES SHOW ON THIS INSTRUCTION SHEET IS SHOWING THE SETUP OF A 2 X 4 FRAME. YOUR ASSEMBLY MAY BE A DIFFERENT SIZE, THE ASSEMBLY OF THE INSTALL FRAME IS THE SAME.

DETAIL B
 SCALE 1 : 3

This document contains information that is privileged, confidential or otherwise protected from use and disclosure. You are hereby notified that any review, disclosure, copying, dissemination or taking of any action in reliance on its contents or other use is strictly prohibited. This document and its contents are confidential proprietary information of Kenall Manufacturing Company.

UNLESS OTHERWISE SPECIFIED DIMENSIONS ARE IN INCHES TOLERANCES ARE:			CAD GENERATED DRAWING. DO NOT MANUALLY UPDATE		 1020 Lakeside Drive Gurnee Illinois 60031
FRACTIONS	DECIMALS	ANGLES	APPROVALS	DATE	
--	.XXX±.015	±1/2°	DRAWN GG	5/13/2010	INSTRUCTION SHEET FRAME INSTALL-YOKE-IBN -----
MATERIAL: -----			ENG. APPROVAL		
FINISH: -----			MFG. APPROVAL		SCALE: -- DO NOT SCALE DRAWING
			SCALE: --		
			SIZE DWG. CAD FILE No: B	F-3811	SHT: 1 OF: 1