

MEDMASTER AURACYL™ SCNCE

Patient Room Luminaires

MAS SERIES

PRODUCT FEATURES:

- » Surface wall mount – 8" x 38"
- » Sealed marine-grade extruded aluminum
- » Sealed backlighting creates a pleasing visual accent and NSF2 listing
- » Standard antimicrobial finish for cleanability



PROJECT INFORMATION

Job Name _____

Fixture Type _____

Catalog Number _____

Approved by _____

SPECIFICATIONS

HOUSING: Marine grade extruded aluminum. Marine grade die-cast aluminum end caps. TGIC polyester powder coat – 5-stage pre-treatment; Salt spray test: 1,000 hours. Antimicrobial finish standard on exposed painted aluminum surfaces of installed luminaire.

REFLECTOR: Die-formed marine grade aluminum. Full reflector/wire cover – 92% reflectivity.

DECORATIVE OUTER LENS: Acrylic translucent white lens standard. Nominal thickness .125". Optional decorative Lumicor® resins – see Ordering Information.

INNER LENS: UV-stabilized, high impact resistant, extruded 100% DR acrylic frost lens. Nominal thickness .100". Lens secured in place by lens frame.

HARDWARE: One stainless steel Phillips head fastener standard. Six stainless steel Phillips head fasteners with IP64 option. Internal brackets and fasteners are non-corrosive.

ELECTRICAL: Available 3500K, 4000K and 5000K color temperatures, 82 CRI. 120-277VAC, 50/60Hz electrical input with serviceable high power factor electronic, constant-current driver (<20% THD, >0.95 PF). Standard 0-10V dimming with 1-100% range, maximum driver source of 200 µA. Consult factory for fluorescent option.

INSTALLATION: Standard six-point mounting required.

PHOTOMETRICS: Photometry tested to the IESNA LM-79-08 standard by an ILAC/ISO17025 accredited laboratory. For additional photometric information, go to www.kenall.com.

WARRANTY: limited five (5) year warranty.

LISTINGS: UL and CUL listed for Damp Location – covered ceiling and wall mount. NSF2 Splash/Non-Food Zone. ADA Compliant. Optional IP64 certified per IEC 60598. Kenall certifies product by both Underwriters and Intertek Testing Laboratories.



ORDERING INFORMATION (Ex: MAS838-PAN-AS-CS-33L40K-DCC-DV)

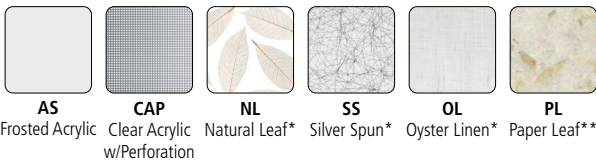
Model	Frame Type	Outer Lens	Finish	Lamp-Driver-Voltage	Options
MAS838	PAN				
Frame Type		Finish		Lamp-Driver-Voltage Type	
PAN Pane		MB Matte Black (Antimicrobial finish) MW Matte White (Antimicrobial finish) WS Warm Satin Painted Anodized CS Cool Satin Painted Anodized BR Bronze DB Dark Bronze BE Beige CC Custom Color (Consult factory)		33L35K-DCC-DV 33 Watt 3500K LED 33L40K-DCC-DV 33 Watt 4000K LED 33L50K-DCC-DV 33 Watt 5000K LED	
Decorative Outer Lens				Options	
AS Frosted Acrylic CAP Clear Acrylic w/Inner Perforation painted to match housing/frame finish NL* Acrylic Natural Leaf SS* Acrylic Silver Spun OL* Acrylic Oyster Linen PL** PETG Paper Leaf				IP64 IP64 certified to IEC 60598 FS Single Fuse & Holder	

*Lumicor® Lumiclear™ Acrylic Resin

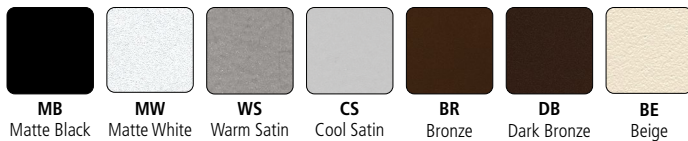
**Lumicor® Lumiform™ PETG Resin

Lumicor® is a registered trademark of Lumicor, Inc., the leader in encapsulated resin technology. All Rights Reserved.

DECORATIVE OUTER LENS



FRAME FINISH



www.kenall.com | P: 800-4-Kenall | F: 262-891-9701 | 10200 55th Street Kenosha, Wisconsin 53144, USA

This product complies with the Buy American Act: manufactured in the United States with more than 50% of the component cost of US origin. It may be covered by patents found at www.kenall.com/patents. Content of specification sheets is subject to change; please consult www.kenall.com for current product details. ©2019 Kenall Mfg. Co.

A brand of **legrand**

MEDMASTER AURACYL™ SCNCE

For additional photometry, go to www.kenall.com

Patient Room Luminaires

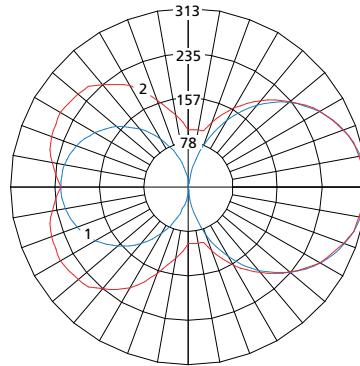
MAS SERIES

PERFORMANCE

Lamp Type	Initial Delivered Lumens		Input Power (W)	Drive Current (mA)	Estd. L70 LED Life (Hrs)
	@ 25°C (lm)	Efficacy (lm/W)			
33L35K	1842	51	36	94	80,000
33L40K	1964	55	36	94	80,000
33L50K	2043	57	36	94	80,000

Displayed information above is for PP Lens type only. Info subject to change. Visit www.kenall.com for IES files and additional information.

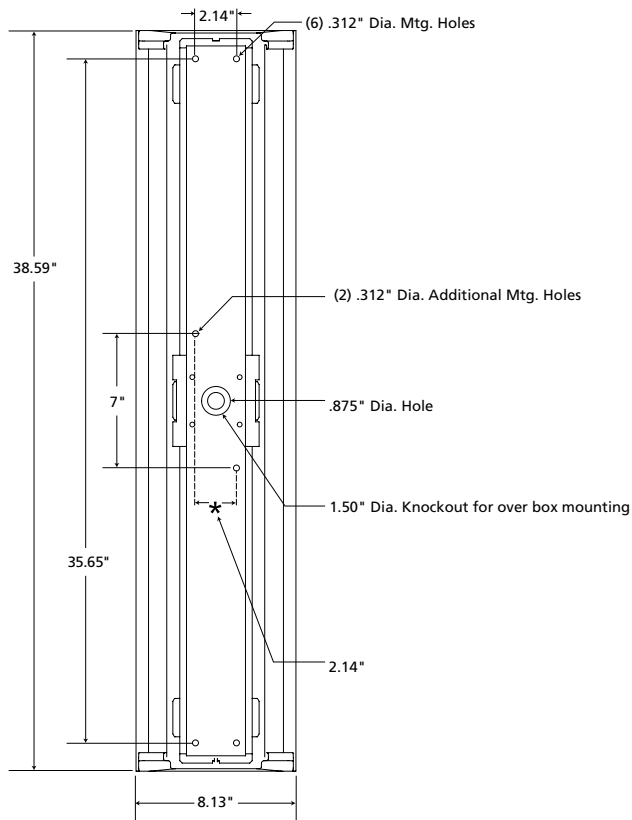
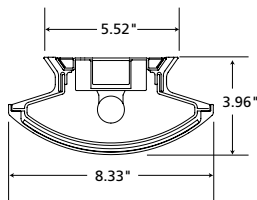
Model: MAS838-AS-MW-33L40K-DV



Maximum Candela = 313 Located At Horizontal Angle = 0, Vertical Angle = -90

- 1 - Vertical Plane Through Horizontal Angles (0-180) (Through Max. Cd.)
- 2 - Horizontal Cone Through Vertical Angle (90) (Through Max. Cd.)

DIMENSIONAL DATA



www.kenall.com | P: 800-4-Kenall | F: 262-891-9701 | 10200 55th Street Kenosha, Wisconsin 53144, USA

A brand of **legrand**

This product complies with the Buy American Act: manufactured in the United States with more than 50% of the component cost of US origin. It may be covered by patents found at www.kenall.com/patents. Content of specification sheets is subject to change; please consult www.kenall.com for current product details. ©2019 Kenall Mfg. Co.

MAS838-111120