

MEDMASTER AURACYL™ SCONCE

Patient Room Luminaires

MAS SERIES

PRODUCT FEATURES:

- » Wall mount – 8" x 13"
- » Sealed marine-grade extruded aluminum
- » Sealed backlighting creates a pleasing visual accent and NSF2 listing
- » Standard antimicrobial finish for cleanability
- » Available with iMAGINE Series Graphics



PROJECT INFORMATION

Job Name _____

Fixture Type _____

Catalog Number _____

Approved by _____

SPECIFICATIONS

HOUSING: Marine grade extruded aluminum. Marine grade die-cast aluminum end caps. TGIC polyester powder coat – 5-stage pre-treatment; Salt spray test: 1,000 hours. Antimicrobial finish standard on exposed painted aluminum surfaces of installed luminaire.

REFLECTOR: Die-formed marine grade aluminum. Full reflector/wire cover – 92% reflectivity.

OUTER LENS: Acrylic translucent white lens standard. Nominal thickness .125". Optional iMAGINE series decorative lens – see Ordering Information.

INNER LENS: UV-stabilized, high impact resistant, extruded 100% DR acrylic frost lens. Nominal thickness .100". Lens secured in place by lens frame.

HARDWARE: One stainless steel Phillips head fastener standard. Four stainless steel Phillips head fasteners with IP64 option. Internal brackets and fasteners are non-corrosive.

ELECTRICAL: Available 3500K, 4000K and 5000K color temperatures, 82 CRI. 120-277VAC, 50/60Hz electrical input with serviceable high power factor electronic, constant-current driver (<20% THD, >0.95 PF). Standard 0-10V dimming with 10-100% range, maximum driver source of 250 µA.

INSTALLATION: Standard four-point mounting required.

PHOTOMETRICS: Photometry tested to the IESNA LM-79-08 standard by an ILAC/ISO17025 accredited laboratory. For additional photometric information, go to www.kenall.com.

WARRANTY: limited five (5) year warranty.

LISTINGS: UL and CUL listed for Damp Location – covered ceiling and wall mount. NSF2 Splash/Non-Food Zone. ADA Compliant. Optional IP64 certified per IEC 60598. Kenall certifies product by both Underwriters and Intertek Testing Laboratories.



ORDERING INFORMATION (Ex: MAS813-PAN-AS-CS-1-12L40K-DCC)

Model	Frame Type	Outer Lens	Finish	Lamp Qty	Lamp & Driver Type	Options
MAS813	PAN			1		
Frame Type			Finish		Lamp & Driver Type	
PAN Pane			MB Matte Black (Antimicrobial finish)		12L35K-DCC-DV 12 Watt 3500K LED	
			MW Matte White (Antimicrobial finish)		12L40K-DCC-DV 12 Watt 4000K LED	
			WS Warm Satin Painted Anodized		12L50K-DCC-DV 12 Watt 5000K LED	
			CS Cool Satin Painted Anodized			
			BR Bronze		Options	
			DB Dark Bronze		IP64 IP64 certified to IEC 60598	
			BE Beige		FS Single Fuse & Holder	
			CC Custom Color (Consult factory)			
			Lamp Quantity			
			1 One Lamp			

Frame Type

PAN Pane

Outer Lens

AS Frosted Acrylic (no graphic)

[Click here](#) for iMAGINE series image selections and ordering numbers. Consult factory for alternate image selection approval.



www.kenall.com | P: 800-4-Kenall | F: 262-891-9700 | 10200 55th Street Kenosha, Wisconsin 53144, USA
This product is able to comply with the latest domestic preference legislation, such as the Buy American Act (BAA), Trade Agreement Act (TAA), Build America, Buy America Act (BABA), and others. It may be covered by patents found at www.kenall.com/patents. Content of specification sheets is subject to change; please consult www.kenall.com for current product details. ©2025 Kenall Mfg. Co.

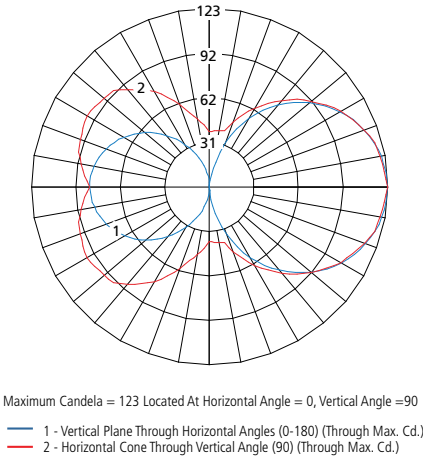
A brand of **legrand**

PERFORMANCE

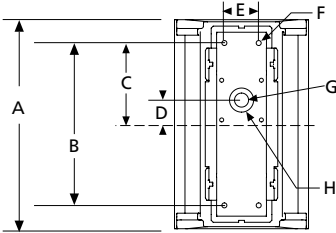
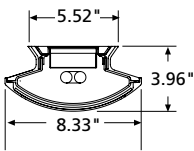
Lamp Type	Initial Delivered Lumens		Input Power (W)	Drive Current (mA)	Estd. L70 LED Life (Hrs)
	@ 25°C (lm)	Efficacy (lm/W)			
12L35K	698	50	14	94	80,000
12L40K	744	53	14	94	80,000
12L50K	774	55	14	94	80,000

Displayed information above is for PP Lens type only. Info subject to change. Visit www.kenall.com for IES files and additional information.

Model: MAS813-AS-MW-12L40K-DV



DIMENSIONAL DATA



DIMENSIONAL DATA (IN INCHES) – CROSS VIEW

A	B	C	D	E	F	G	H
13.00	10.10	5.05	n/a	2.14	(4) .312D	.875D	1.50D

