

ENVIROSEAL™

ES5 SERIES

PRODUCT FEATURES:

- » Surface mount – ceiling or wall; 5"×24" (12.70cm×60.96cm), 5"×36" (12.70cm×91.44cm), 5"×48" (12.70cm×121.92cm), 5"×96" (12.70cm×243.84cm)
- » Cold rolled steel or stainless steel housing for corrosion resistance
- » Continuous row mount for multiple luminaires
- » IP65 Option available



PROJECT INFORMATION

Job Name _____

Fixture Type _____

Catalog Number _____

Approved by _____

SPECIFICATIONS

HOUSING: One-piece, seam-welded 20-gauge CRS. Base provided with four-point mounting holes and one wireway hole. Lens is positioned in baseplate channels and retained with stainless steel fastener(s). Base mounts flush to ceiling or wall surface.

LENS/GASKET: UV-stabilized, pearlescent or clear polycarbonate. Smooth exterior, linear prismatic interior. Nominal thickness .125" (.32cm). IP65 option provided with linear silicone gasket to seal lens frame to housing.

FINISH: Brushed stainless steel finish (#4B) or white TGIC polyester powder coat – 5-stage pre-treatment; Salt spray test: 1,000 hours; Reflectance: 92%.

HARDWARE: One Type 302 stainless steel Phillips head fastener secures lens in housing channel.

ELECTRICAL: LED: Available 3000K, 3500K, 4000K and 5000K color temperatures, 82 CRI. 120-277VAC or 347VAC, 50/60Hz electrical input with serviceable high power factor electronic, constant-current driver (<20% THD, >0.95 PF). Standard 0-10V dimming with 1-100% range and dim-to-dark capabilities (non dim-to-dark with 347V); 330µA max. source current. Optional embedded microwave motion sensor (MS) has factory default settings of 20 minute time out, dims down to 30%. LE: Class P ballast. Fluorescent electronic 120/277 or 347 voltage ballasts, high power factor. Optional one-lamp 90 minute nickel-cadmium battery pack (EL) includes inverter charger, test switch and charging indicator lamp.

SENSOR & CONTROLS: Optional sensor available with compatible third party controls. To see the full list of compatible controls, [click here](#).

SOCKETS: Shock-resistant fluorescent sockets with internal locking collar to ensure positive lamp retention. Three year warranty on LED lamps and driver for defects resulting in a fixture lumen depreciation of 30% or greater.

WARRANTY: Limited five (5) year LED warranty. [Peace of Mind Guarantee against breakage.](#)

LISTINGS: UL and CUL listed for Wet Location – covered ceiling. UL and CUL listed for Damp Location – horizontal wall mount. Optional UL and CUL Listed for Wet Location (WW Option) – horizontal wall mount. Optional UL certified IP65 per IEC 60598 (IP65 Option) – ceiling mount. Luminaire tested to an IK10 impact protection rating per IEC 60068-2-75:1997-08.



ORDERING INFORMATION (Ex: ES5-48-1-45L50K-DCC-1-DV-2H-PP-FS)

Model	Length	Lamp Qty/Lamp Type	Ballast/Driver Type	Ballast/Driver Qty	Voltage	Housing	Lens Type	Options
-------	--------	--------------------	---------------------	--------------------	---------	---------	-----------	---------

ES5

Nominal Length 24 2' (60.96cm) 36 3' (91.44cm) 48 4' (121.92cm) 96 8' (243.84cm)	Lamp Qty/Type (cont'd) 8' (243.84cm) Lengths (Lamp Qty per 4' (121.92cm) Cross Section) 1-45L30K 45 Watt 3000K LED 1-45L35K 45 Watt 3500K LED 1-45L40K 45 Watt 4000K LED 1-45L50K 45 Watt 5000K LED 1-28[▲] F28T5 2-28[▲] F28T5 1-32 F32T8 2-32 F32T8 1-54 F54T5HO 2-54 F54T5HO	Lens Type PP Pearlescent Polycarbonate CP[▼] Clear Polycarbonate
Lamp Qty/Type 2' (60.96cm) Lengths 1-25L30K 25 Watt 3000K LED 1-25L35K 25 Watt 3500K LED 1-25L40K 25 Watt 4000K LED 1-25L50K 25 Watt 5000K LED 1-14[▲] F14T5 2-14[▲] F14T5 1-17 F17T8 2-17 F17T8 1-31U F31T8 – 1.62" (4.11cm) U 2-31U F31T8 – 1.62" (4.11cm) U	Ballast Type DCC Dimming Constant Current (LED) IS Elec <10% THD Instant Start (T8) RS Elec <10% THD Rapid Start (T5, T5HO, T8) SB Specified Ballast	Options LEL[▲] LED Emergency Battery Backup (45L lamp type only) EL*[‡] Standard Lumen EL Pack (450 lumens) (n/a with LED) PEL*[‡] High Lumen EL Pack (1100 lumens) (n/a with LED) SEL*[‡] Specified EL Pack (n/a with LED) FS[▲] Single Fuse & Holder HC[^] Row Mount Hub Connector (see KO option) KO[^] Continuous Row Mount - .875" (2.22cm) diameter knockout in end caps (see HC option for Kenall supplied attachment connector) PM[^]† Pendant Mount (damp locations only) – suspension hardware by others TN120 120 Volt, 13 Watt Twin Tube NPF Night Light (n/a with LED) TN277 277 Volt, 13 Watt Twin Tube NPF Night Light (n/a with LED) IP65** UL certified IP65 – Ceiling Mount (w/removable end caps – not suitable for continuous row mount) WW**+• UL/CUL Wet Location Listing – Horizontal Wall Mount (w/removable end caps – not suitable for continuous row mount) TR Tamper Resistant Torx [®] Fastener MS Motion Sensor (4' LED only; n/a with 347 Voltage)
3' (91.44cm) Lengths 1-21 F21T5 2-21 F21T5 1-25 F25T8 2-25 F25T8	Ballast Quantity 1 One 2 Two	▲ n/a with 347V * Option not available with 2' (60.96cm) fixtures, with LED, or F21T5 lamps ** n/a with KO or PM options ^ n/a with IP65 or WW options + n/a with IP65 option ‡ 347V available only with F25T8/F32T8 Lamps † Consult factory for pendant mount hole locations. • Add .375" (.95cm) to overall length ▼ n/a with LED
4' (121.92cm) Lengths 1-45L30K 45 Watt 3000K LED 1-45L35K 45 Watt 3500K LED 1-45L40K 45 Watt 4000K LED 1-45L50K 45 Watt 5000K LED 1-28[▲] F28T5 2-28[▲] F28T5 1-32 F32T8 2-32 F32T8 1-54 F54T5HO 2-54 F54T5HO	Voltage DV 120-277 Volts 347 347 Volt	
	Housing Options 2H 20-Ga CRS; Painted PH 20-Ga 304SS; Painted 5H 20-Ga 304SS; Brushed PXH 20-Ga 316SS; Painted XH 20-Ga 316SS; Brushed	



www.kenall.com | P: 800-4-Kenall | F: 262-891-9700 | 10200 55th Street Kenosha, Wisconsin 53144, USA
 This product is able to comply with the latest domestic preference legislation, such as the Buy American Act (BAA), Trade Agreement Act (TAA), Build America, Buy America Act (BABA), and others. It may be covered by patents found at www.kenall.com/patents. Content of specification sheets is subject to change; please consult www.kenall.com for current product details. ©2024 Kenall Mfg. Co.

A brand of **legrand**

ENVIROSEAL™

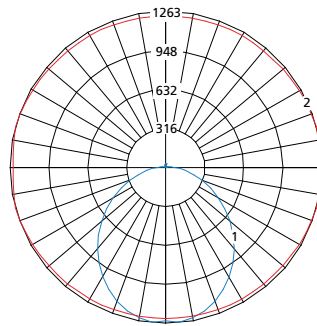
ES5 SERIES

PERFORMANCE

Length	Lamp Type	Initial Delivered Lumens		Input Power (W)	Drive Current (mA)	Estd. L70 LED Life (Hrs)
		@ 25°C	Efficacy (lm/W)			
2'	25L30K	2,205	88	25	100	80,000
	25L35K	2,273	91			
	25L40K	2,351	94			
	25L50K	2,412	96			
4'	45L30K	4,410	90	49	100	80,000
	45L35K	4,546	93			
	45L40K	4,701	96			
	45L50K	4,825	98			

Displayed information above is for PP lens type. Info subject to change. Visit www.kenall.com for IES files and additional information.

Model: ES5-48-45L40K-DCC-DV-2H-PP

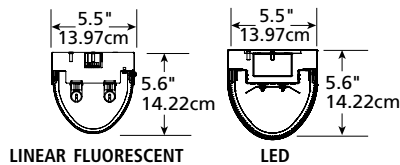


Max Candela = 1263 Located At Horizontal Angle = 15, Vertical Angle = 5

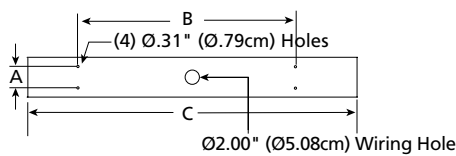
- 1 - Vertical Plane Through Horizontal Angles (15 - 195) (Through Max. Cd.)
- 2 - Horizontal Cone Through Vertical Angle (5) (Through Max. Cd.)

DIMENSIONAL DATA

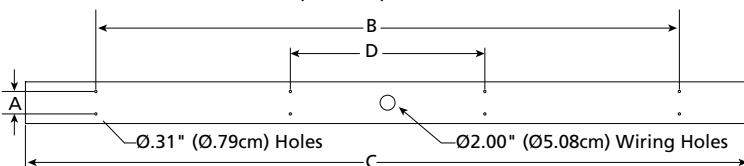
CROSS SECTION



BASEPLATE



96" (243.84cm) BASEPLATE



DIMENSIONAL DATA (IN INCHES & CENTIMETERS)

	A	B	C	D
ES524 – T5	3.00	16.00	23.25	
cm	7.62	40.64	59.06	
ES524 – T8	3.00	16.00	24.75	
cm	7.62	40.64	62.87	
ES536 – T5	3.00	20.00	35.00	
cm	7.62	50.80	88.90	
ES536 – T8	3.00	20.00	36.75	
cm	7.62	50.80	93.35	
ES548 – T5	3.00	32.00	46.75	
cm	7.62	81.28	118.75	
ES548 – T8/LED	3.00	32.00	48.75	
cm	7.62	81.28	123.83	
ES596 – T5	3.00	78.00	92.87	26.00
cm	7.62	198.12	235.89	66.04
ES596 – T8	3.00	78.00	96.83	26.00
cm	7.62	198.12	245.95	66.04



www.kenall.com | P: 800-4-Kenall | F: 262-891-9700 | 10200 55th Street Kenosha, Wisconsin 53144, USA
 This product is able to comply with the latest domestic preference legislation, such as the Buy American Act (BAA), Trade Agreement Act (TAA), Build America, Buy America Act (BABA), and others. It may be covered by patents found at www.kenall.com/patents. Content of specification sheets is subject to change; please consult www.kenall.com for current product details. ©2024 Kenall Mfg. Co.

A brand of Legrand