

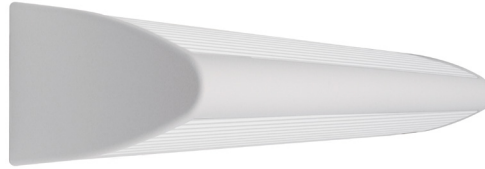
MEDMASTER™

Multi-Function Patient Room Luminaires

MPWUD SERIES

PRODUCT FEATURES:

- » Surface wall mount – 24", 36" & 48" lengths
- » Multi-functional – ambient and reading
- » Marine grade aluminum body with die-cast end caps
- » Lens with internal prisms, smooth exterior lens for ease of cleanability
- » Standard antimicrobial finish



PROJECT INFORMATION

Job Name _____

Fixture Type _____

Catalog Number _____

Approved by _____

SPECIFICATIONS

HOUSING: Marine grade aluminum body with die-cast end caps. Housing attached to mounted baseplate. Housing secured with countersunk fasteners. White TGIC polyester powder coat – 5-stage pre-treatment. Salt spray test: 1,000 hours; Reflectance: 92%. Matte white antimicrobial finish standard on exposed surfaces of installed luminaire.

BASEPLATE: 16-gauge CRS baseplate provided with four-point (24" housing) or six-point (36" housing) mounting holes and one wireway hole. TGIC polyester powder coat – 5-stage pre-treatment. Salt spray test: 1,000 hours; Reflectance: 92%.

LENS: UV-stabilized, high impact resistant, frosted DR/acrylic (50/50 blend). Lens securely positioned in body channels.

ELECTRICAL: **LED:** Available 3000K, 3500K and 4000K color temperatures, 82 CRI. 120-277VAC or 347VAC, 50/60Hz electrical input with serviceable high power factor electronic, constant-current driver (<20% THD, >0.95 PF). Standard 0-10V dimming with 1-100% range and dim-to-dark capabilities (1-100% only with 347V input); 330µA max. source current. **Linear Fluorescent:** Fluorescent electronic 120/277/347V ballasts high power factor (<10% THD). One ballast per lamp compartment. Lamps by others. See Ordering Information for optional equipment. Optional LVCD control provides low-voltage patient interface, controlling the ambient and reading modes independently with dimming control, and if ordered night light option without dimming.

SENSOR & CONTROLS: Optional sensor available with compatible third party controls. To see the full list of compatible controls, click [here](#).

INSTALLATION: Standard four-point (24" housing) or six-point (36" & 48" housing) mounting.

WARRANTY: Limited five (5) year warranty.

LISTINGS: Certified to UL standards by Intertek Testing Laboratory for Damp Locations.



ORDERING INFORMATION (Ex: MPWUD-24-MW-1/1-25L-35K8-DIM1-DV)

Model	Length	Finish	Lamp Configuration	Lamp Power	Lamp Color	Ballast/Driver	Voltage	Options
MPWUD								
Nominal Length			Lamp Power			Options		
24	24"		2' Lengths	25L	25 Watt LED	NLWL**	2700K LED Night Light, Left Side	
36	36"		14*■	F14T5		NLWR**	2700K LED Night Light, Right Side	
48	48"		17•	F17T8		NLAL**	Amber LED Night Light, Left Side	
Finish			24*■	F24T5HO		NLAR**	Amber LED Night Light, Right Side	
MW	Antimicrobial Matte White		3' Lengths			EL*^	One-Lamp (Downlight) Emergency Battery Pack (32°F)	
MB	Antimicrobial Matte Black		38L	38 Watt LED		LEL§	Emergency Battery Pack (Consult Factory)	
SL	Antimicrobial Silver		21*▲	F21T5		ES	Emergency Shut-Off Switch (120V rated)	
CC	Custom Color (Consult Factory)		25†	F25T8		FS	Fuse & Holder	
Lamp Configuration			4' Lengths			GFI▲	Ground Fault Outlet	
(For LED choose 1/1, 1/0 or 0/1)			45L	45 Watt LED		HGO▲^	Hospital Grade Grounded Outlet – 20A, 125V	
2/2	2 Up/2 Down		28*	F28T5		PCL	Pull Chain Left (4 position)(120V only)	
2/1	2 Up/1 Down		32	F32T8		PCR	Pull Chain Right (4 position)(120V only)	
1/2	1 Up/2 Down		54	F54T5HO		LVC▼	Low Voltage Controller (Click here for specifications)	
1/1	1 Up/1 Down		Lamp Color (LED only)			LVCS▼	Low Voltage Controller with Secondary Knockout (Click here for specifications)	
0/1	0 Up/1 Down (solid top)		30K8	3000K / 82CRI min.		LVCD▼	Low Voltage Controller with Dimming (Click here for specifications)	
0/2	0 Up/2 Down (solid top)		35K8	3500K / 82CRI min.		LVCD5▼	Low Voltage Controller with Dimming and Secondary Knockout (Click here for specifications)	
1/0	1 Up/0 Down (solid bottom)		40K8	4000K / 82CRI min.		SW*	Rocker Switch (one per main lamp circuit)	
2/0	2 Up/0 Down (solid bottom)		Ballast/Driver Type			TR	Tamper Resistant Torx® with center pin Fastener	
			DIM1	0-10V Dimming to 1%				
			IS	Instant Start Electronic <10% THD (T8)				
			RS	Rapid Start Electronic <10% THD (T8,T5,T5HO)				
			SB	Specified Ballast				
			Voltage					
			DV	120-277 Volts				
			120	120 Volts				
			277	277 Volts				
			347	347 Volts				

ACCESSORIES ORDERED SEPARATELY

MPWS Low Voltage Wall Switch (Click [here](#) for Specifications)



www.kenall.com | P: 800-4-Kenall | F: 262-891-9701 | 10200 55th Street Kenosha, Wisconsin 53144, USA

A brand of **legrand**

This product complies with the Buy American Act: manufactured in the United States with more than 50% of the component cost of US origin. It may be covered by patents found at [www.kenall.com/patents](#). Content of specification sheets is subject to change; please consult [www.kenall.com](#) for current product details. ©2022 Kenall Mfg. Co.

MPWUD-012522

MEDMASTER™

Multi-Function Patient Room Luminaires

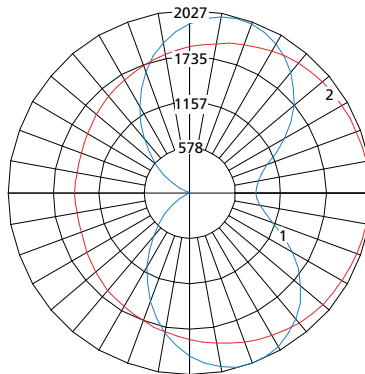
MPWUD SERIES

PERFORMANCE

Mode	Lamp Power	Initial Delivered Lumens, by CCT (lm)			Efficacy (lm/W)	Input Power (W)	Drive Current (mA)	Estd. L70 LED Life (Hrs)
		30K8	35K8	40K8				
Up Only	25L	3,060	3,155	3,263	109 - 116	28	100	80,000
Down Only		2,981	3,074	3,179	106 - 113	28	100	80,000
Up & Down		5,954	6,139	6,348	106 - 113	56	100	80,000
Up Only	38L	5,195	5,355	5,538	117 - 125	44	100	80,000
Down Only		5,061	5,217	5,396	114 - 122	44	100	80,000
Up & Down		10,107	10,420	10,776	115 - 122	88	100	80,000
Up Only	45L	5,561	5,733	5,928	118 - 126	47	100	80,000
Down Only		5,417	5,585	5,775	116 - 123	47	100	80,000
Up & Down		10,819	11,154	11,534	116 - 123	93	100	80,000

Information subject to change without notice. Visit www.kenall.com for IES files and additional information.

Model: MPWUD-48-MW-1/1-45L-40K8-DIM1-DV

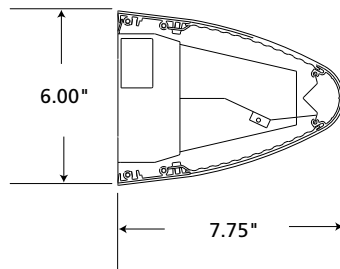


Maximum Candela = 2314 Located At Horizontal Angle = 0, Vertical Angle = 20

- 1 - Vertical Plane Through Horizontal Angles (0-180) (Through Max. Cd.)
- 2 - Horizontal Cone Through Vertical Angle (20) (Through Max. Cd.)

DIMENSIONAL DATA

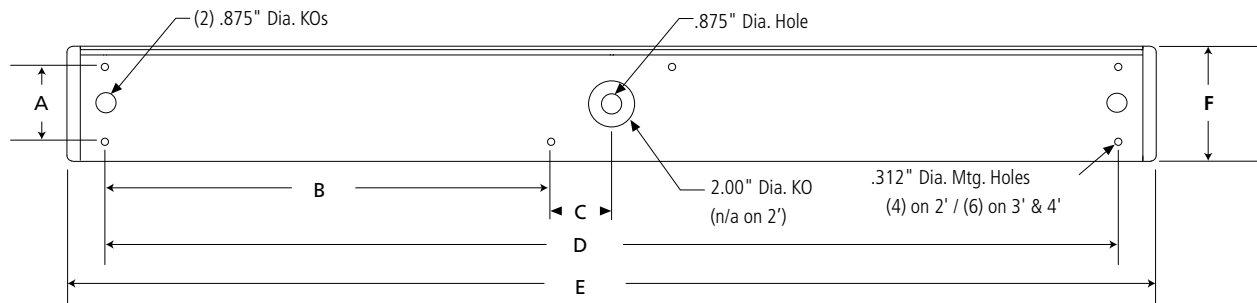
CROSS SECTION



DIMENSIONAL DATA (IN INCHES)

	A	B	C	D	E	F
24" T5	3.25	n/a	n/a	20.00	24.00	6.00
24" T8/LED	3.25	n/a	n/a	21.00	25.61	6.00
36" T5	3.25	13.38	2.63	32.00	35.88	6.00
36" T8/LED	3.25	13.38	2.63	32.00	37.61	6.00
48" T5	3.25	19.38	2.63	44.00	47.70	6.00
48" T8/LED	3.25	19.38	2.63	44.00	49.61	6.00

BACK VIEW



www.kenall.com | P: 800-4-Kenall | F: 262-891-9701 | 10200 55th Street Kenosha, Wisconsin 53144, USA

This product complies with the Buy American Act: manufactured in the United States with more than 50% of the component cost of US origin. It may be covered by patents found at www.kenall.com/patents. Content of specification sheets is subject to change; please consult www.kenall.com for current product details. ©2022 Kenall Mfg. Co.

A brand of Legrand