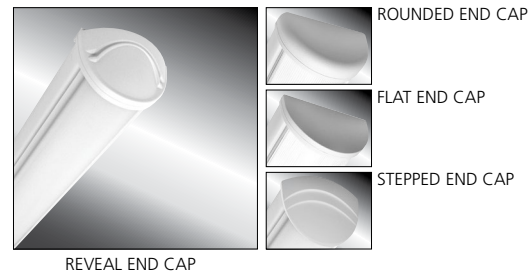


# MILLENIUM STRETCH™

## MLHA5 SERIES – INDIVIDUAL

### Product Features:

- » 5" linear surface mount luminaire with multiple length options
- » Extruded aluminum housing with decorative end caps
- » Low-profile –ADA compliant
- » Peace of Mind Guarantee® against breakage



### SPECIFICATIONS:

**HOUSING:** Extruded marine grade aluminum body with die-cast aluminum end caps. Closed cell EPDM and silicone gasketing along lens channel and end caps. TGIC polyester powder coat finished – 5-step pre-treatment. See Ordering Information for available finishes.

**OPTIC:** UV-Stabilized, high-efficiency diffused polycarbonate with smooth exterior and linear prismatic interior. Lens securely positioned in body channels and endcaps, locked into place with concealed tamper-resistant Torx® T-20 with center pin fasteners.

**END CAPS:** Marine grade die-cast aluminum. Four styles available: Flat, Rounded, Reveal and Stepped. Conduit and "Wiremold™ ready" knockout visible only from interior of end cap (For Flat and Rounded styles only).

**HARDWARE:** Stainless steel, tamper-resistant Torx® with center pin fasteners secure lens in housing body's lens channel (eight on 72" and 96" housings, four on 24" and 48" housings).

**LED MODULE:** Serviceable mid-power LED array. Minimum 80 CRI standard (R9>0), consult factory for optional 90CRI (R9>50). Maximum three-step MacAdam ellipse variation. See Ordering Information for available color temperature options.

**DRIVER:** 120-277VAC or 347VAC, 50/60Hz electrical input with serviceable constant-current driver (<20% THD, >0.90 PF). Minimum 85% driver efficiency. Standard 0-10V dimming with 1-100% range and dim-to-dark capabilities; 0.2mA maximum source current.

**CONTROLS:** TekLink™ TL50 is an independent lighting control system integral to the luminaire, featuring its own embedded occupancy sensor and adjustable time-out/dimming settings and a closed-loop daylight harvesting function for maximum energy savings. TekLink™ TL100 is a centralized, wired zonal occupancy and closed-loop daylight harvesting control system. TL100 controllers are standalone devices and are ordered separately from the luminaire(s). **Click here for specifications.** **MS Option:** Optional embedded microwave motion sensor mounted behind the diffuser. Remote adjustment for dim level, timeout period and sensor sensitivity settings. Factory default is 30% dimming and 20min. timeout. Sensor operates at 5.8 GHz (continuous-wave radar) and provides 360° coverage at various mounting heights and coverage areas. Available with compatible third party controls. To see the full list of compatible controls, **click here.**

**INSTALLATION:** Surface ceiling, vertical or horizontal wall, corner mount (CMB) or suspended pendant mounting (PM). Standard four-point mounting (two-point on 24" fixtures, eight-point on 96") required for Peace of Mind Guarantee®. Suitable for -30°C to 40°C ambient environments, unless otherwise noted.

**PHOTOMETRICS:** Photometry tested to the IESNA LM-79-08 standard by an ILAC/ISO17025 accredited laboratory. For additional photometric data, please go to [www.kenall.com](http://www.kenall.com).

**WARRANTY:** Limited ten (10) year LED warranty. [Peace of Mind Guarantee against breakage.](#)

**LISTINGS:** Luminaire is certified to UL Standards by Intertek Testing Laboratory for Wet Location – covered ceiling mount. Corner, horizontal wall, vertical wall and pendant mount installation – Damp Location only. ETL certified IP64 in compliance with IEC 60598 – ceiling mount. ADA compliant. Luminaire tested to an IK10 impact protection rating per IEC 60068-2-75:1997-08.

						<b>In Stock SKU</b>
						MLHA5-48-F-MW-PP-45L40K-DCC-DV
						MLHA5-48-R-MW-PP-45L40K-DCC-DV

### ORDERING INFORMATION (Ex: MLHA5-48-F-MB-PP-45L40K-DCC-DV-FS)

Model	Length	End Cap	Finish	Lens	Lamp Code	Driver Type	Voltage	Options	Accessories	TekLink	Controls Kit
<b>MLHA5</b>				<b>PP</b>		<b>DCC</b>					< >
<b>Length</b>			<b>Finish</b>			<b>Driver Type</b>			<b>Accessories</b>		
24	2'		LG	Light Gray		DCC	0-10V Dimming Constant Current		CMB§	Corner Mount Bracket	
48	4'		MB	Matte Black						(Must be ordered with DL Option)	
96	Two 4' (factory connected)		MW	Matte White		<b>Voltage</b>			<b>TekLink</b>		
			CC	Custom Color (Consult Factory)		DV	120-277VAC, 50/60Hz		TL50▲	TL50 Control System	
<b>End Caps</b>			<b>Lens</b>			347	347VAC, 60Hz			(Click here for specifications)	
F	Flat		PP	Pearlescent Polycarbonate		<b>Options</b>			TL100	TL100 Control System	
R	Rounded		<b>Lamp Code</b>			LEL	Integral 10W Emergency Battery Backup			(Click here for specifications)	
RV	Reveal		<b>2' Lengths</b>			CDF	4' length only, 0°C minimum operating temperature, n/a with 347V)				
SP	Stepped		25L35K	25 Watt 3500K LED		DL	Captive Diffuser Fasteners				
			25L40K	25 Watt 4000K LED		FS	Damp Location				
			25L50K	25 Watt 5000K LED		NAT	Single Fuse & Holder				
			<b>4' Lengths</b>			PH	Natatorium Environment Option				
			45L35K	45 Watt 3500K LED		PM§	Phillips Head Fasteners				
			45L40K	45 Watt 4000K LED		MS*	Pendant Mount (max 3/8" NPT stems, by others; Damp Location rated)				
			45L50K	45 Watt 5000K LED			Motion Sensor				

\* n/a with 347V input; 2' and 4' lengths only  
 § PM and CMB not available in conjunction  
 ▲ n/a with 347V input or 72"/96" lengths.  
 n/a in combination with MS or CMB options.



# MILLENNIUM STRETCH™

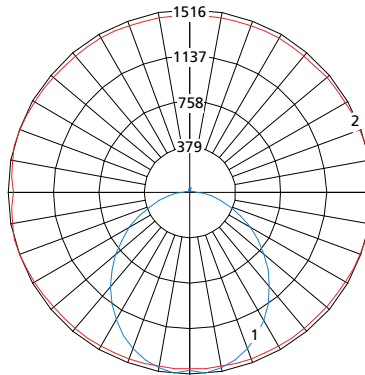
## MLHA5 SERIES – INDIVIDUAL

### PERFORMANCE

Length	Lamp Type	Initial Delivered Lumens			Drive Current (mA)	Estd. L70 LED Life (Hrs)
		@ 25°C	Efficacy (lm/W)	Input Power (W)		
2'	25L35K	2,374	95	25	100	150,000
	25L40K	2,531	101	25	100	150,000
	25L50K	2,531	101	25	100	150,000
4'	45L35K	4,748	97	49	100	150,000
	45L40K	5,062	103	49	100	150,000
	45L50K	5,062	103	49	100	150,000

Information above is valid for the recommended Type PP lens type and is subject to change without notice. Visit [www.kenall.com](http://www.kenall.com) for IES files and additional information.

Model: MLHA5-48-F-MW-PP-45L40K-DCC-DV

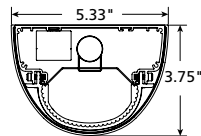


Maximum Candela = 1516 Located At Horizontal Angle = 15, Vertical Angle = 5

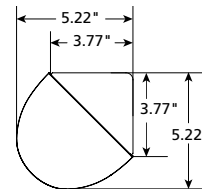
- 1 - Vertical Plane Through Horizontal Angles (15-195) (Through Max. Cd.)
- 2 - Horizontal Cone Through Vertical Angle (5) (Through Max. Cd.)

### DIMENSIONAL DATA

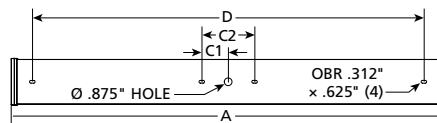
### CROSS SECTION/DETAILS



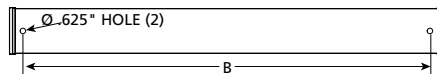
### CORNER MOUNT BRACKET



### SURFACE MOUNTING HOLES



### PM OPTION



### Nominal Two Foot Fixture Legend

End Cap	A	B	C1	C2	D
R	26.524	22.250	N/A	N/A	20.480
F	25.308	22.250	N/A	N/A	20.480
SP	28.131	22.250	N/A	N/A	20.480
RV	27.674	22.250	N/A	N/A	20.480

### Nominal Four Foot Fixture Legend

End Cap	A	B	C1	C2	D
R	50.524	46.250	3.000	6.000	44.480
F	49.308	46.250	3.000	6.000	44.480
SP	52.131	46.250	3.000	6.000	44.480
RV	51.674	46.250	3.000	6.000	44.480



[www.kenall.com](http://www.kenall.com) | P: 800-4-Kenall | F: 262-891-9700 | 10200 55th Street Kenosha, Wisconsin 53144, USA  
 This product is able to comply with the latest domestic preference legislation, such as the Buy American Act (BAA), Trade Agreement Act (TAA), Build America, Buy America Act (BABA), and others. It may be covered by patents found at [www.kenall.com/patents](http://www.kenall.com/patents). Content of specification sheets is subject to change; please consult [www.kenall.com](http://www.kenall.com) for current product details. ©2024 Kenall Mfg. Co.

A brand of Legrand