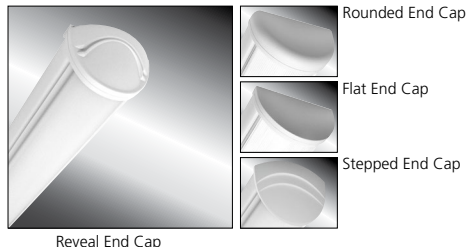


MILLENIUM STRETCH™

MLHA5 SERIES using Indigo-Clean Technology

PRODUCT FEATURES:

- » Provides environmental disinfection and effective, efficient lighting performance via visible LED light
- » Dual-Mode Indigo-Clean Technology is independently tested to kill 94% of SARS CoV-2 and Influenza-A***, in addition to MRSA
- » Single-Mode Indigo-Clean Technology is independently tested to kill harmful bacteria, such as Staph*, including MRSA**
- » Peace of Mind Guarantee® against breakage



PROJECT INFORMATION

Job Name _____

Fixture Type _____

Catalog Number _____

Approved by _____

SPECIFICATIONS

HOUSING: Marine grade aluminum. Extruded body with die-cast end caps. Housing, with end caps, post assembly TGIC polyester powder coat finished – 5-step pre-treatment. See Ordering Information for available finishes.

OPTIC: High-impact extruded diffuser. Smooth exterior, linear prismatic interior. Nominal thickness .156". Lens securely positioned in body channels and end caps. Lens locked in place with four (4) tamper-resistant stainless steel Torx® T-20 with center pin fasteners and sealed with closed cell gaskets. Full reflector/ wire cover with 92% reflectivity.

END CAPS: Marine grade die-cast aluminum. Three styles available: Flat, Rounded and Reveal. Conduit and "Wiremold™" ready™ knockouts visible only from interior of end cap (Flat and Rounded styles only).

ELECTRICAL: (Single- and Dual-Mode ICT) Serviceable mid-power white and 405nm Indigo LED array. Available 3200K, 3700K and 4300K color temperatures with 3-step MacAdam variation allowance. Minimum 82 CRI standard. 120-277VAC and 347VAC electrical input with serviceable high power factor electronic, constant-current drivers (<10% THD, >0.90 PF). Minimum 85% driver efficiency. Standard 0-10V dimming with 1-100% range and dim-to-dark capabilities (non-dim-to-dark on Dual-Mode ICT). 165µA maximum source current. **Single-Mode ICT** provides a single, white disinfection operational mode. **Dual-Mode ICT** provides two operational modes based on room occupancy. White Disinfection Mode is a white LED array for ambient lighting plus a simultaneous low-power 405nm LED array for low-level, continuous and safe environmental disinfection. Indigo Disinfection Mode is a higher-level 405nm array for continuous safe environmental disinfection during periods of room vacancy. The operational mode is determined via internal low-voltage device based upon the input signal provided by an external control device/system, such as the [IC150](#) product. Luminaire tested to an IK10 impact protection rating per IEC 60068-2-75:1997-08. Refer to the [Kenall Dual-Mode ICT Control Application Guide](#) for further description.

INSTALLATION: Standard four-point mounting required for Peace of Mind Guarantee®. Suitable for installation into -30°C to 40°C ambient environments, unless otherwise noted.

PHOTOMETRICS: Photometry tested to the IESNA LM-79-08 standard by an ILAC/ISO17025 accredited laboratory. For additional photometric information, go to www.kenall.com.

WARRANTY: Limited five (5) year LED warranty. [Peace of Mind Guarantee against breakage.](#)

LISTINGS: Luminaire is certified to UL Standards by Intertek Testing Laboratory for Wet Location – covered ceiling mount. ETL certified IP64 in compliance with IEC 60598 – ceiling mount. Corner, horizontal wall and pendant mount installation – damp location only. ADA compliant. EPA Est. No. 99283-WI-1. Luminaire tested to an IK10 impact protection rating per IEC 60068-2-75:1997-08.

*per independent lab report #5GS-09516076094. Contact Kenall for a copy of this report.

**Antimicrobial Activity of a Continuous Visible Light Disinfection System by Rutala, et. al, ID Week 2016.

***Refer to www.indigo-clean.com for details.



ORDERING INFORMATION (Ex: MLHA5-48-F-MB-FA-23I/55C-37K8-DCC-DV-FS-9500)

Model	Length	End Cap	Finish	Lens	Lamp Power	Lamp Color	Driver Type	Voltage	Options	Accessories
MLHA5	48			FA			DCC			
Length		Finish		Driver Type		Options				
48 4'		LG Light Gray MB Matte Black MW Matte White CC Custom Color (Consult Factory)		DCC 0-10V Dimming Constant Current		LEL† Integral 10W Emergency Battery Backup CDF Captive Diffuser Fasteners DL Damp Location FS Single Fuse & Holder PH Phillips Head Fasteners PM‡ Pendant Mount (Max. 3/8" NPT stems by others; damp only)				
End Caps		Lens		Voltage		Accessories				
F Flat R Rounded RV Reveal SP Stepped		FA Frosted DR Acrylic		DV 120-277 Volts, 50/60Hz 347 347 Volts, 60Hz		CMB‡ Corner Mount Bracket (Must be ordered with DL Option)				
Lamp Power		Lamp Color								
55C 55W Single-Mode ICT 23I/55C 55W Dual-Mode ICT		32K8 3200K / 82 CRI min. 37K8 3700K / 82 CRI min. 43K8 4300K / 82 CRI min.		† 0°C minimum operating temperature, n/a with 347V ‡ PM and CMB not available in conjunction						

ACCESSORIES ORDERED SEPARATELY
IC150 External Room Control System for Dual-Mode ICT Products
 (click [here](#) for Specifications)

Click [HERE](#) for MLHA5-ICT
 'Fast Track' Ordering Options
Ships in 5 days



www.kenall.com | P: 800-4-Kenall | F: 262-891-9700 | 10200 55th Street Kenosha, Wisconsin 53144, USA
 Not intended for medical use. This product is able to comply with the latest domestic preference legislation, such as the Buy American Act (BAA), Trade Agreement Act (TAA), Build America, Buy America Act (BABA), and others. It may be covered by patents found at www.kenall.com/patents. Content of specification sheets is subject to change; please consult www.kenall.com for current product details. ©2025 Kenall Mfg. Co.

A brand of **legrand**

MILLENNIUM STRETCH™

MLHA5 SERIES – with Indigo-Clean Technology

PERFORMANCE

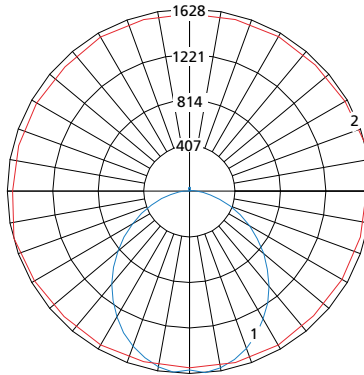
Technology	Length	Lamp Code	Lumen Output by Color (lm) ¹			Efficacy (lm/W)	Power Consumption ²			Estd L70 LED Life (Hrs)
			32K8	37K8	43K8		Occupied (W)	LPD (W)	Unoccupied (W)	
Single-Mode ICT	4'	55C	5,298	5,436	5,491	87 - 90	61	51	n/a	80,000
Dual-Mode ICT	4'	23I/55C	5,298	5,436	5,491	87 - 90	61	51	29	80,000

¹Provided values are applicable to the FA lens Type. Information subject to change without notice. Visit www.kenall.com for IES files and additional information.

²Lighting Power and Energy Calculations:

- Use **Occupied Power** for total electrical load calculations. Use this value to estimate branch circuit lighting loads.
- Use **LPD Power** for lighting power density calculations. Only the power attributed to white light is required per NEMA LSD EB 84-202X. Power used toward germicidal disinfection has been removed for this calculation.
- Use **Unoccupied** and **Occupied Power** for Energy calculations to determine the power consumed over time based on the use of the space.

Model: MLHA5-48-X-MW-FA-55C-37K8-DCC-DV and MLHA5-48-X-MW-FA-23I/55C-37K8-DCC-DV

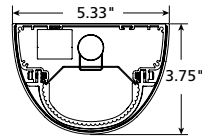


Maximum Candela = 1628 Located At Horizontal Angle = 15, Vertical Angle = 5

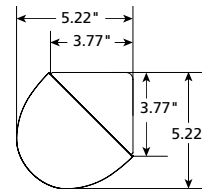
- 1 - Vertical Plane Through Horizontal Angles (15-195) (Through Max. Cd.)
- 2 - Horizontal Cone Through Vertical Angle (5) (Through Max. Cd.)

DIMENSIONAL DATA

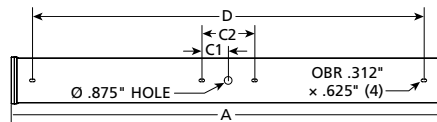
CROSS SECTION/DETAILS



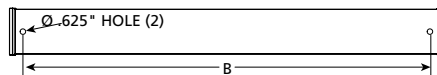
CORNER MOUNT BRACKET



SURFACE MOUNTING HOLES



PM OPTION



Nominal Four Foot Fixture Legend

End Cap	A	B	C1	C2	D
R	50.52	46.25	3.00	6.00	44.48
F	49.31	46.25	3.00	6.00	44.48
SP	52.13	46.25	3.00	6.00	44.48
RV	51.67	46.25	3.00	6.00	44.48

