

### IMPORTANT SAFEGUARDS

When using electrical equipment, basic safety precautions should always be followed, including the following:

THIS PRODUCT MUST BE INSTALLED IN ACCORDANCE WITH THE APPLICABLE INSTALLATION CODE BY A PERSON FAMILIAR WITH THE CONSTRUCTION AND OPERATION OF THE PRODUCT AND THE HAZARDS INVOLVED. DISCONNECT POWER TO ALL CIRCUITS BEFORE WIRING FIXTURE. INSTALL IN ACCORDANCE WITH ALL NATIONAL, STATE, AND LOCAL CODES. DO NOT CONNECT TO AN UNGROUNDED SUPPLY. READ ALL FIXTURE MARKINGS AND LABELS TO ENSURE CORRECT INSTALLATION OF FIXTURE. SUPPLEMENTAL INSTRUCTIONS MAY BE LOCATED ON THE FIXTURE, IN ADDITION TO THIS INSTRUCTION SHEET, REGARDING ORIENTATION, OR MOUNTING RESTRICTIONS.

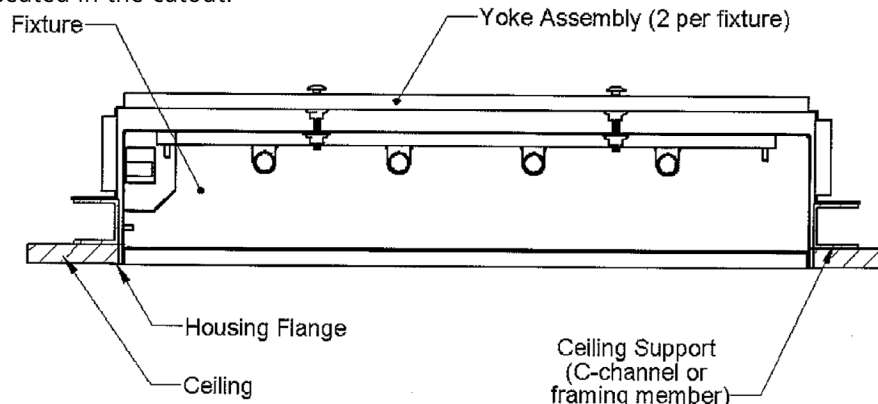


## INSTALLATION INSTRUCTIONS

### SAVE THESE INSTRUCTIONS

#### RECESSED FLANGE INSTALLATION

1. To ensure an adequate seal between the flange and the ceiling system, a square opening and a flat surface are critical. When gypsum is used as the base material it should be of sufficient thickness to resist bowing.
2. See specification sheet or contact Kenall for recommended ceiling cutout dimension. The cutout dimension should be accurate to within 1/16 of an inch. The ceiling surface around the opening shall be flat, smooth and not run (deviate from a straight edge) more than 1/32" over 2-feet. When gypsum is used, the opening should always be cut into whole pieces of gypsum-ceiling seams and joints shall be outside of fixture cutout.
3. After creating the rough opening, frame the opening on the plenum side of the ceiling; framing around the entire opening is recommended. Due to its straightness, typically "C"-shaped 16GA galvanized cold-rolled channel is used to frame the opening. Framing members running under gypsum shall be whole pieces around the cutout and run the length of the cutout, not just under yoke bracket. Gypsum board should be secured to the framing material around the opening.
4. Secure yokes to "C"-channel or framing material – locate so that all four (4) carriage bolts will engage the holes in the housing when the fixture is installed. Connect the appropriate flexible raceway system to the wiring access hole, apply a bead of caulk to the ceiling side of the housing flange, and raise the fixture housing into the opening. Attach supplied hardware to carriage bolts to hold fixture in place. Tighten all four (4) nuts until fixture is firmly seated in the cutout.



---

**RECESSED GRID INSTALLATION**

- Fixture is designed for either 1" or 1-½" (see fixture description) T-bar systems with vertical grid T thickness of less than ¼". Grid system can be installed with standard 24"×24" or 24"×28" centerline spacing of grid. Fixture housing lays into grid. Attached support wires between hanger brackets and ceiling support structure.

**SURFACE MOUNTED INSTALLATION**

- Locate and drill four (4) pilot holes in mounting surface using fixture as template. Using ¼-20 fasteners and anchors appropriate for the mounting surface (supplied by others,) mount fixture. NOTE: Mounting dimensions may also be obtained specification sheet.

**CLEANING THE LENS AND GRAPHICS PANEL**

Use the following procedure to properly clean the graphic panel and clear acrylic lens. This should be done in a clean, dust-free environment to avoid contamination. The printed side of the graphic panel is a sensitive photographic film. Handle with extreme care. Avoid contact with solvents and oils from the skin as they may permanently damage the image.

1. Remove graphic panel from door.
2. Gently wipe down image with a clean, damp micro-fiber cloth. Hard wiping and abrasive cloths will scratch the film and clear lens.
3. For heavier smudges and residue, use a diluted mild dish soap solution. Afterward, rinse-off solution with a clean, damp micro-fiber cloth.
4. Dry panels with a clean, dry micro-fiber cloth.

**CUSTOMER SERVICE**

---

For technical assistance, call 1-800-4KENALL (1-800-453-6255).

**WARRANTY**

---

For warranty information visit [www.kenall.com/Resources/Certified-Performance-Warranties](http://www.kenall.com/Resources/Certified-Performance-Warranties)

